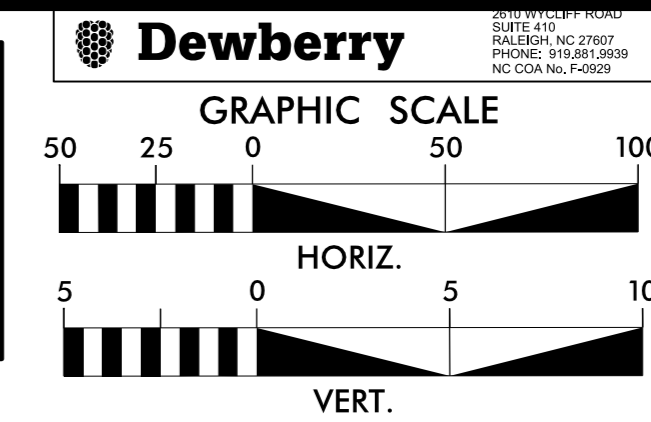


REFER TO SHEET UC-22AQ FOR PROFILE INFORMATION

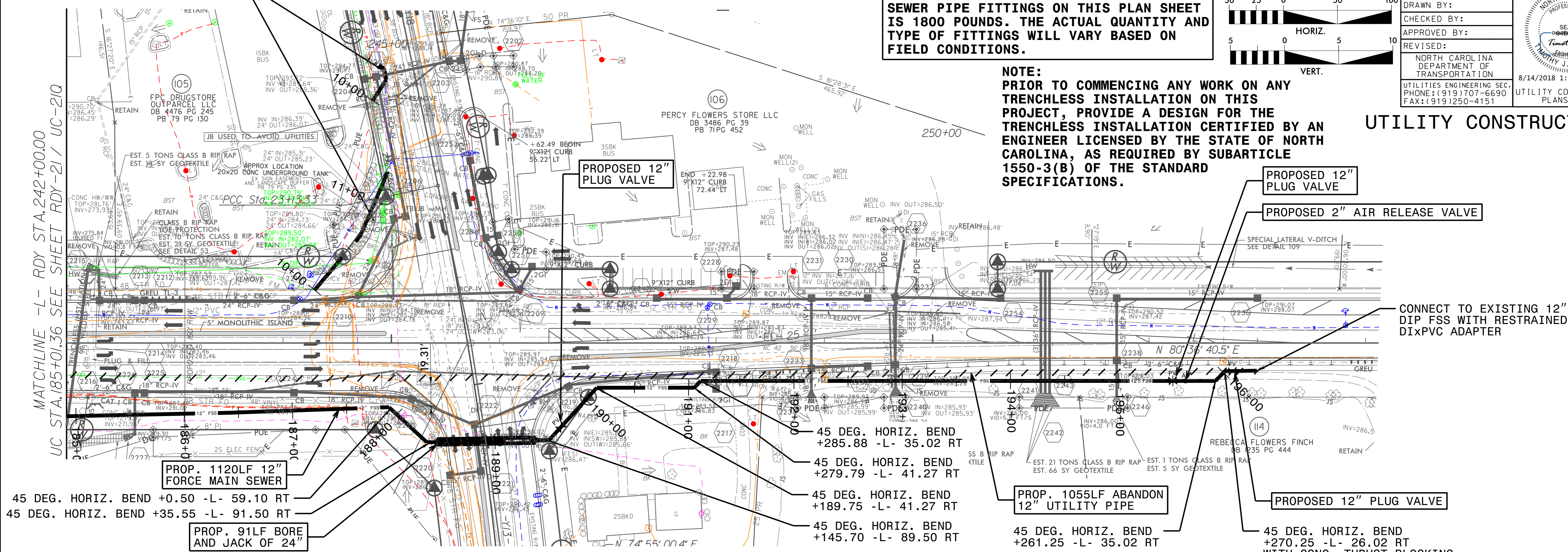
NOTE:
THE ESTIMATED QUANTITY OF DUCTILE IRON SEWER PIPE FITTINGS ON THIS PLAN SHEET IS 1800 POUNDS. THE ACTUAL QUANTITY AND TYPE OF FITTINGS WILL VARY BASED ON FIELD CONDITIONS.



PROJECT REFERENCE NO.	R-3825B	SHEET NO.	UC-22Q
DESIGNED BY:			
DRAWN BY:			
CHECKED BY:			
APPROVED BY:			
REVISED:		8/14/2018 1:43:20 PM EDT	UTILITY CONSTRUCTION PLANS ONLY
NORTH CAROLINA DEPARTMENT OF TRANSPORTATION			
UTILITIES ENGINEERING SEC. PHONE: (919) 707-6690 FAX: (919) 250-4151			

UTILITY CONSTRUCTION

NOTE:
PRIOR TO COMMENCING ANY WORK ON ANY TRENCHLESS INSTALLATION ON THIS PROJECT, PROVIDE A DESIGN FOR THE TRENCHLESS INSTALLATION CERTIFIED BY AN ENGINEER LICENSED BY THE STATE OF NORTH CAROLINA, AS REQUIRED BY SUBARTICLE 1550-3(B) OF THE STANDARD SPECIFICATIONS.

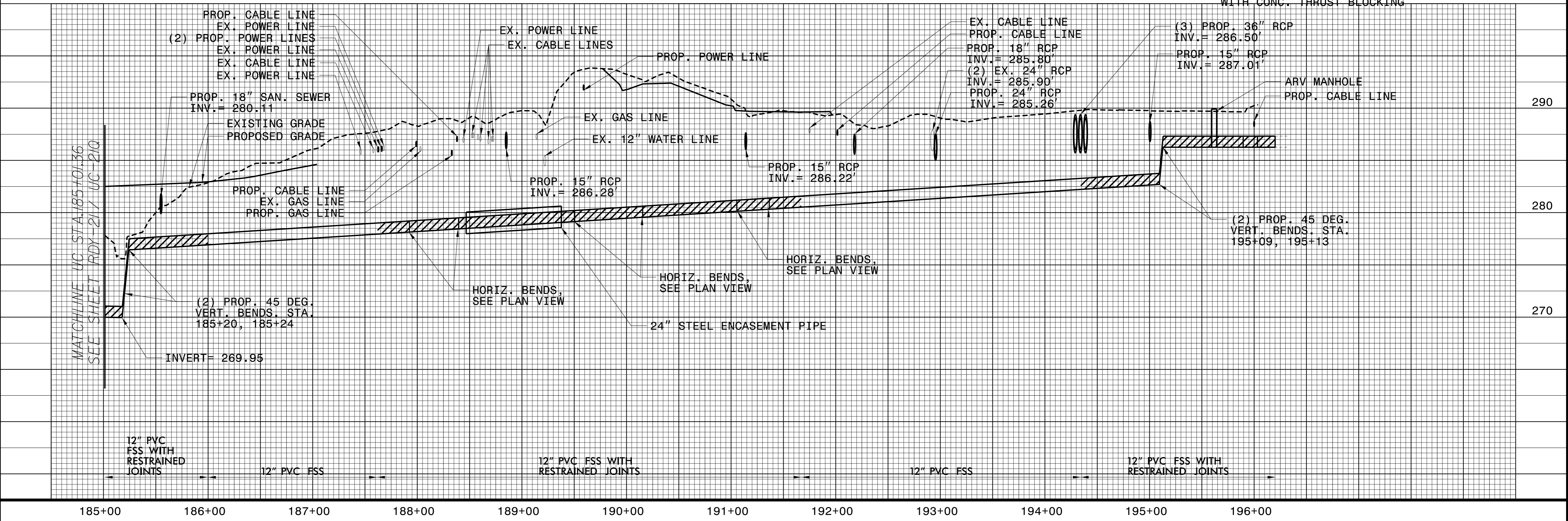


45 DEG. HORIZ. BEND +0.50 -L- 59.10 RT
 45 DEG. HORIZ. BEND +35.55 -L- 91.50 RT
 PROP. 1120LF 12" FORCE MAIN SEWER
 PROP. 91LF BORE AND JACK OF 24"

45 DEG. HORIZ. BEND +285.88 -L- 35.02 RT
 45 DEG. HORIZ. BEND +279.79 -L- 41.27 RT
 45 DEG. HORIZ. BEND +189.75 -L- 41.27 RT
 45 DEG. HORIZ. BEND +145.70 -L- 89.50 RT

PROP. 1055LF ABANDON 12" UTILITY PIPE
 45 DEG. HORIZ. BEND +261.25 -L- 35.02 RT

PROP. 12" PLUG VALVE
 45 DEG. HORIZ. BEND +270.25 -L- 26.02 RT WITH CONC. THRUST BLOCKING



185+00 186+00 187+00 188+00 189+00 190+00 191+00 192+00 193+00 194+00 195+00 196+00

REVISIONS