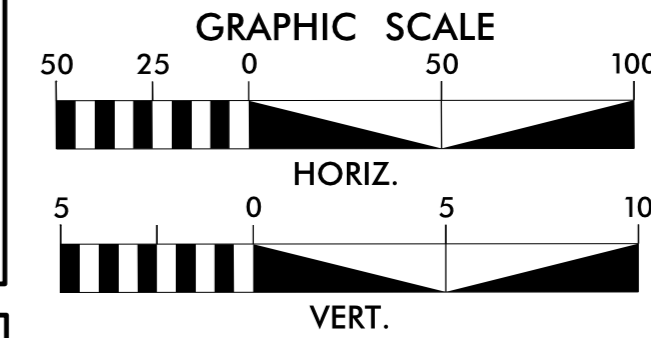


Dewberry

PROJECT REFERENCE NO. **R-3825B** SHEET NO. **UC-200**

DESIGNED BY: _____
 DRAWN BY: _____
 CHECKED BY: _____
 APPROVED BY: _____
 REVISED: _____

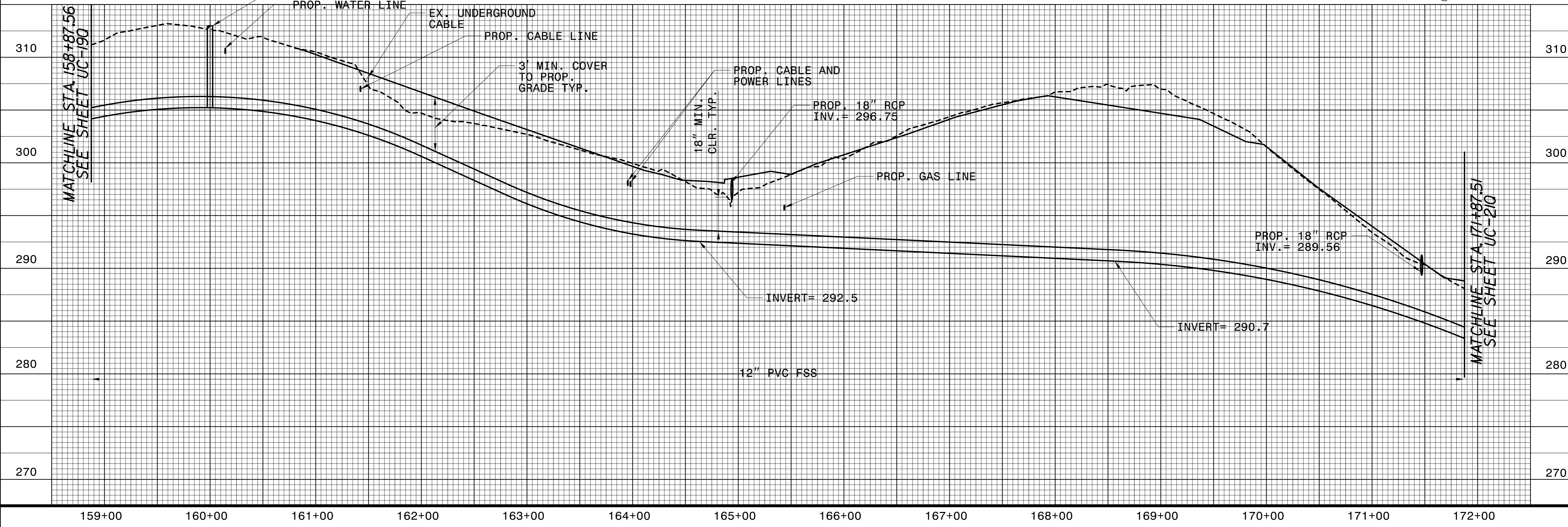
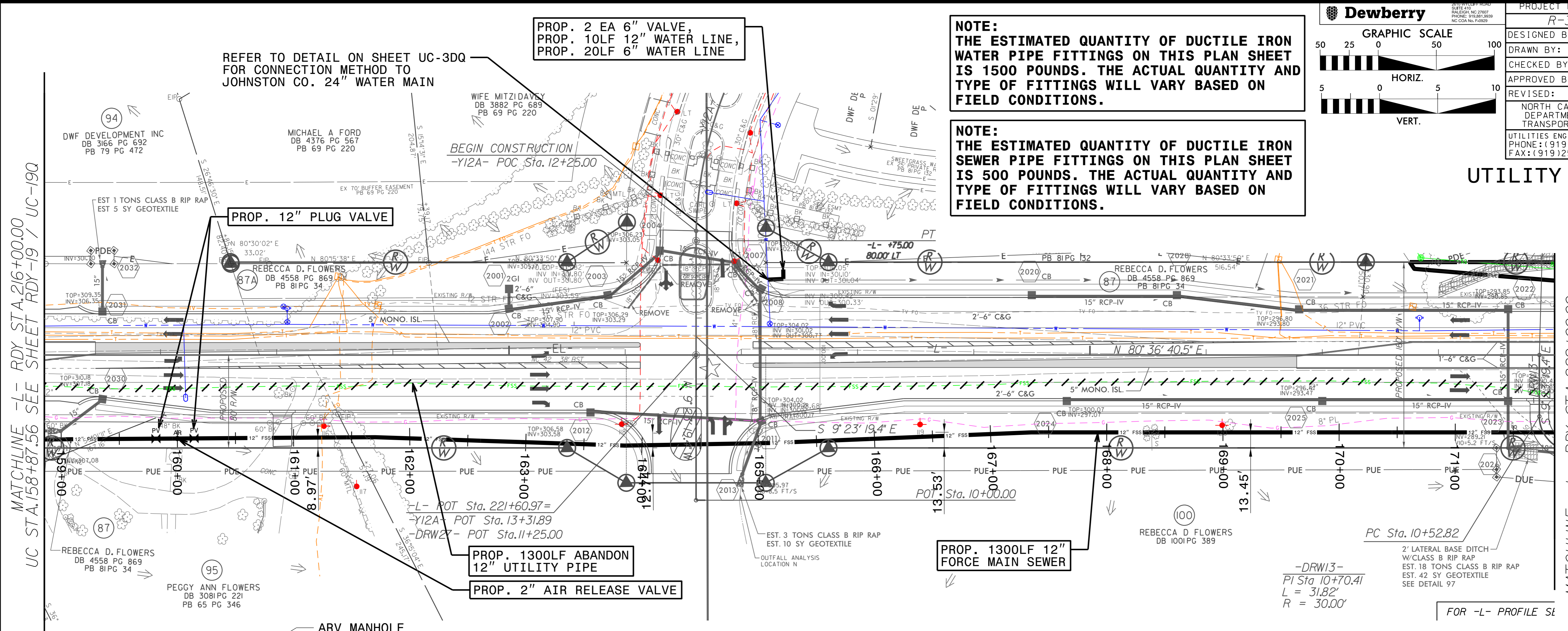
NORTH CAROLINA PROFESSIONAL SEAL
 Timothy J. Restucco
 PE 10017
 8/14/2018 1:43:20 PM EDT
 UTILITY CONSTRUCTION PLANS ONLY



NOTE:
 THE ESTIMATED QUANTITY OF DUCTILE IRON WATER PIPE FITTINGS ON THIS PLAN SHEET IS 1500 POUNDS. THE ACTUAL QUANTITY AND TYPE OF FITTINGS WILL VARY BASED ON FIELD CONDITIONS.

NOTE:
 THE ESTIMATED QUANTITY OF DUCTILE IRON SEWER PIPE FITTINGS ON THIS PLAN SHEET IS 500 POUNDS. THE ACTUAL QUANTITY AND TYPE OF FITTINGS WILL VARY BASED ON FIELD CONDITIONS.

UTILITY CONSTRUCTION



REVISIONS

8/17/19