

Dewberry

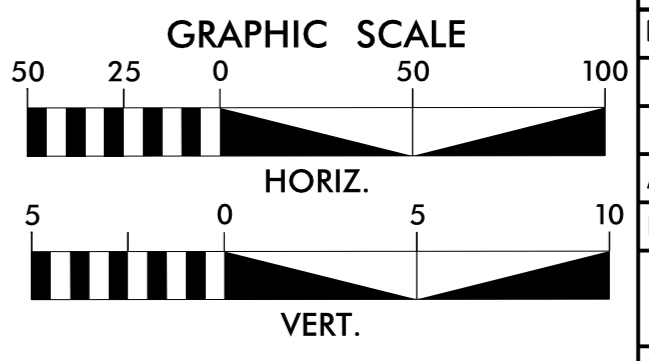
PROJECT REFERENCE NO. **R-3825B** SHEET NO. **UC-19Q**

DESIGNED BY: _____
 DRAWN BY: _____
 CHECKED BY: _____
 APPROVED BY: _____
 REVISED: _____

NORTH CAROLINA PROFESSIONAL SEAL
 Doc# 046800
 Timothy J. Rocco
 P.E.

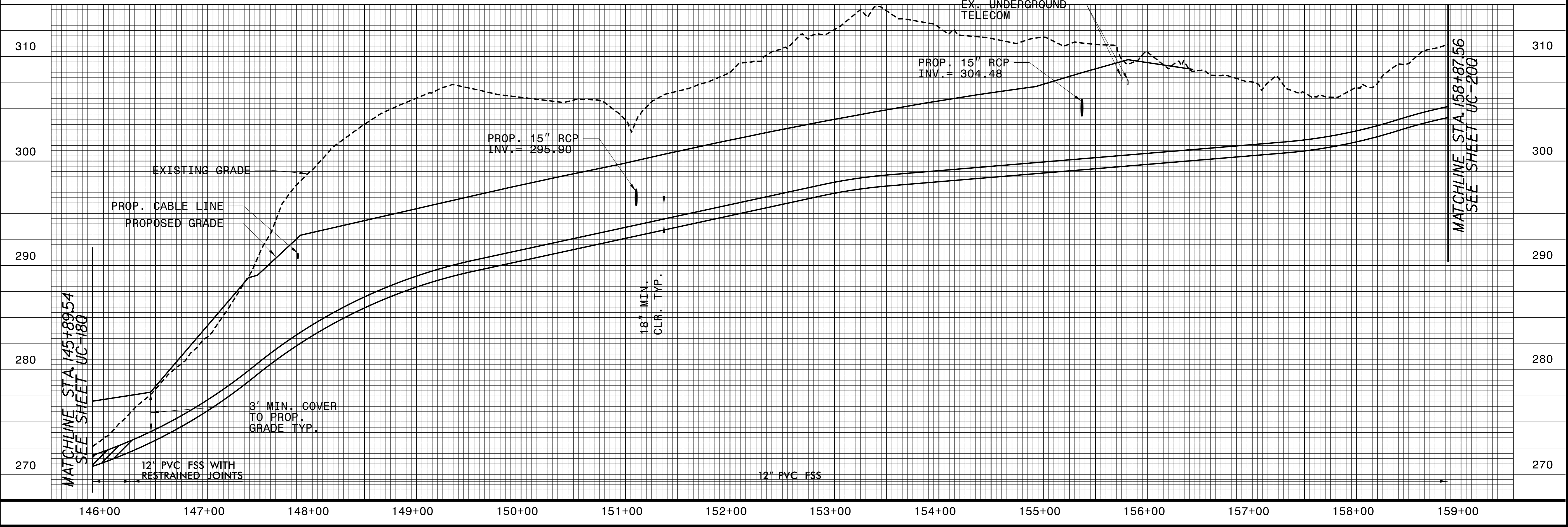
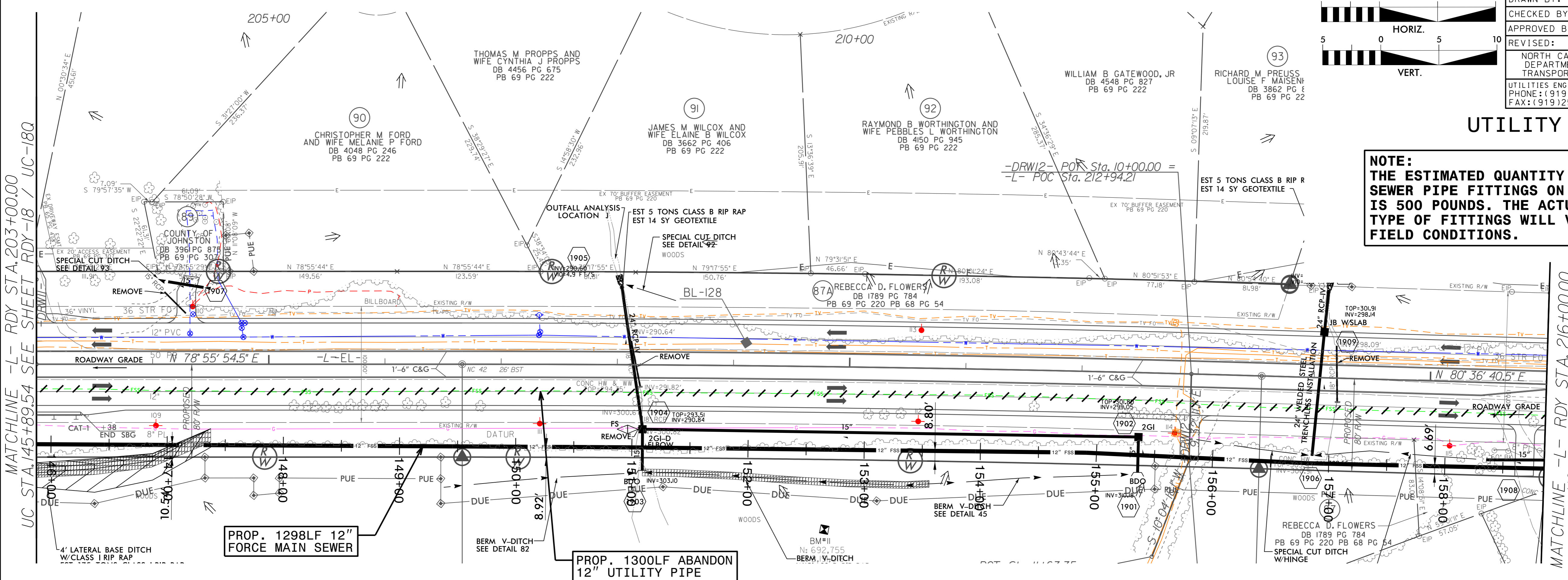
NORTH CAROLINA DEPARTMENT OF TRANSPORTATION
 UTILITIES ENGINEERING SEC.
 PHONE: (919) 707-6690
 FAX: (919) 250-4151

8/14/2018 1:43:20 PM EDT
 UTILITY CONSTRUCTION PLANS ONLY



UTILITY CONSTRUCTION

NOTE:
 THE ESTIMATED QUANTITY OF DUCTILE IRON SEWER PIPE FITTINGS ON THIS PLAN SHEET IS 500 POUNDS. THE ACTUAL QUANTITY AND TYPE OF FITTINGS WILL VARY BASED ON FIELD CONDITIONS.



REVISIONS

MATCHLINE -L- RDY STA. 203+00.00
UC STA. 145+89.54 SEE SHEET RDY-18 / UC-18Q

MATCHLINE -L- RDY STA. 216+00.00
UC STA. 158+87.56
SEE SHEET RDY-20 / UC-20Q

MATCHLINE STA. 158+87.56
SEE SHEET UC-20Q