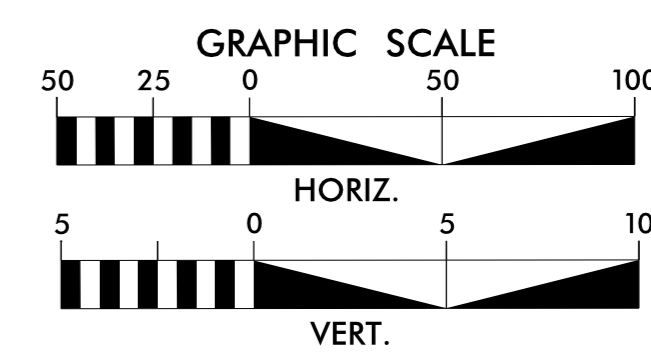


8/17/19

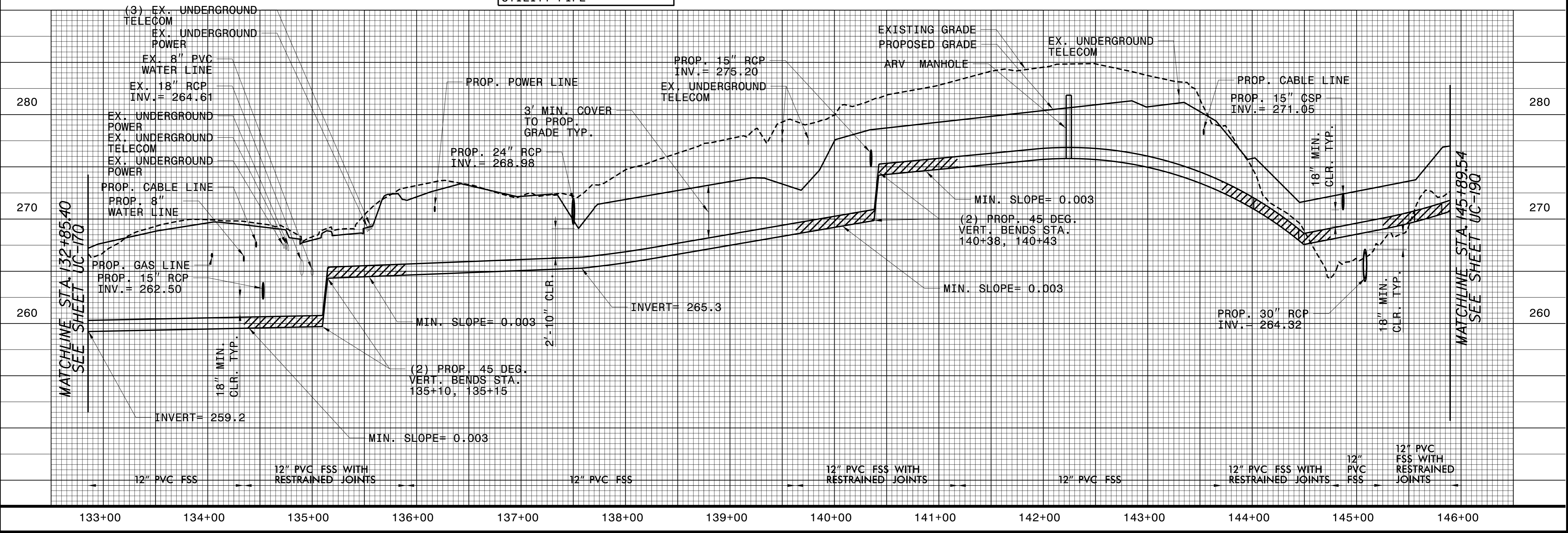
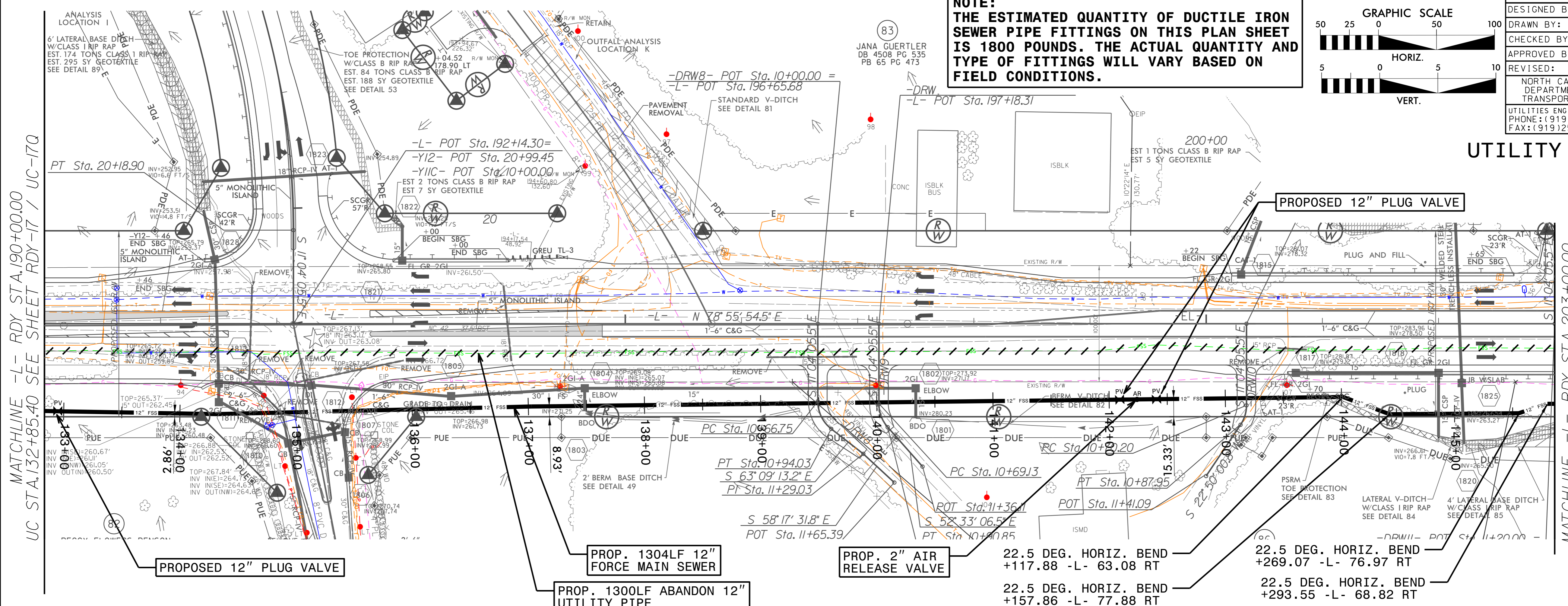


PROJECT REFERENCE NO.	R-3825B UC-18	SHEET NO.	UC-18Q
DESIGNED BY:			
DRAWN BY:			
CHECKED BY:			
APPROVED BY:			
REVISED:		NORTH CAROLINA DEPARTMENT OF TRANSPORTATION UTILITIES ENGINEERING SEC. PHONE: (919) 707-6690 FAX: (919) 250-4151	
		8/14/2018 1:43:20 PM EDT UTILITY CONSTRUCTION PLANS ONLY	

NOTE:
 THE ESTIMATED QUANTITY OF DUCTILE IRON SEWER PIPE FITTINGS ON THIS PLAN SHEET IS 1800 POUNDS. THE ACTUAL QUANTITY AND TYPE OF FITTINGS WILL VARY BASED ON FIELD CONDITIONS.



UTILITY CONSTRUCTION



REVISIONS

MATCHLINE -L- RDY STA. 190+00.00
 UC STA. 132+85.40 SEE SHEET RDY-17 / UC-17Q

MATCHLINE -L- RDY STA. 203+00.00
 UC STA. 145+89.54
 SEE SHEET RDY-19 / UC-19Q

133+00 134+00 135+00 136+00 137+00 138+00 139+00 140+00 141+00 142+00 143+00 144+00 145+00 146+00