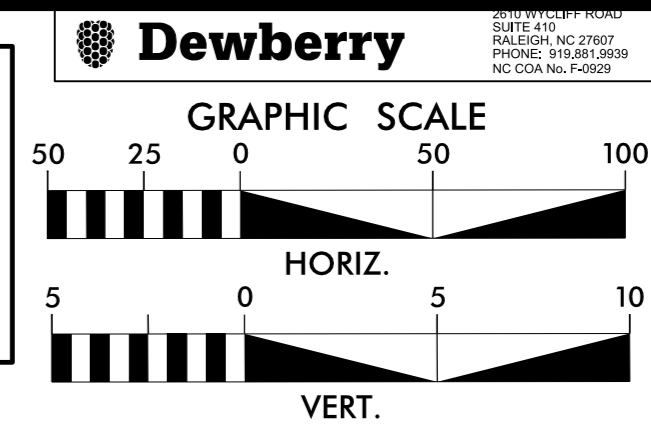
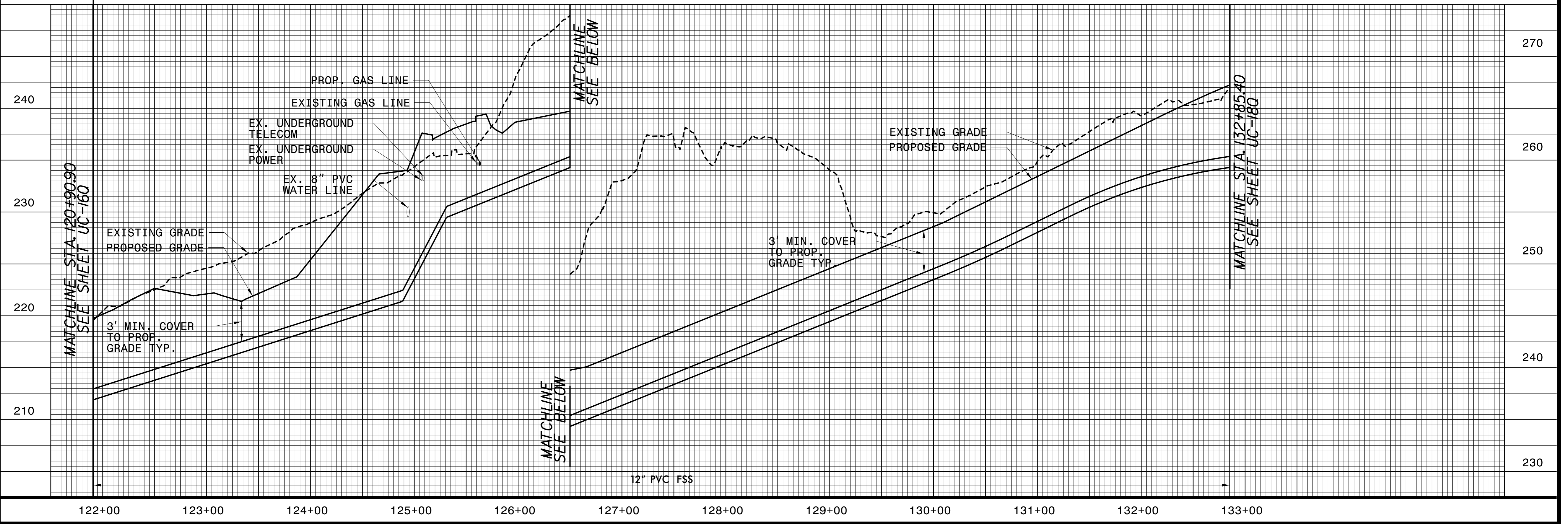
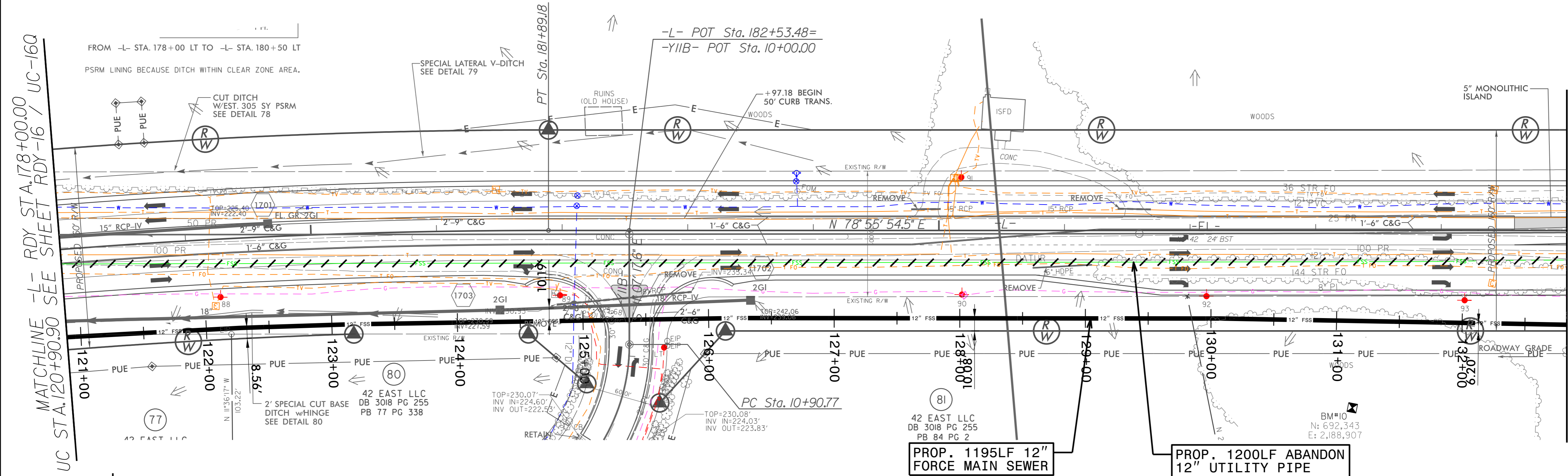
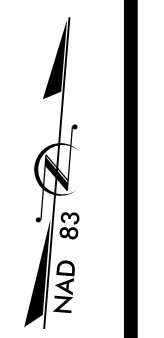


**NOTE:**  
THE ESTIMATED QUANTITY OF DUCTILE IRON SEWER PIPE FITTINGS ON THIS PLAN SHEET IS 500 POUNDS. THE ACTUAL QUANTITY AND TYPE OF FITTINGS WILL VARY BASED ON FIELD CONDITIONS.



PROJECT REFERENCE NO. <i>R-3825B</i>	SHEET NO. <i>UC-17Q</i>
DESIGNED BY:	
DRAWN BY:	
CHECKED BY:	
APPROVED BY:	
REVISED:	
NORTH CAROLINA DEPARTMENT OF TRANSPORTATION UTILITIES ENGINEERING SEC. PHONE: (919) 707-6690 FAX: (919) 250-4151	
8/14/2018 1:43:20 PM EDT	
UTILITY CONSTRUCTION PLANS ONLY	

### UTILITY CONSTRUCTION



REVISIONS

MATCHLINE -L- RDY STA 178+00.00  
UC STA. 120+90.90 SEE SHEET RDY-16 / UC-16Q

MATCHLINE -L- RDY STA. 190+00.00  
UC STA. 132+85.40  
SEE SHEET RDY-18 / UC-18Q