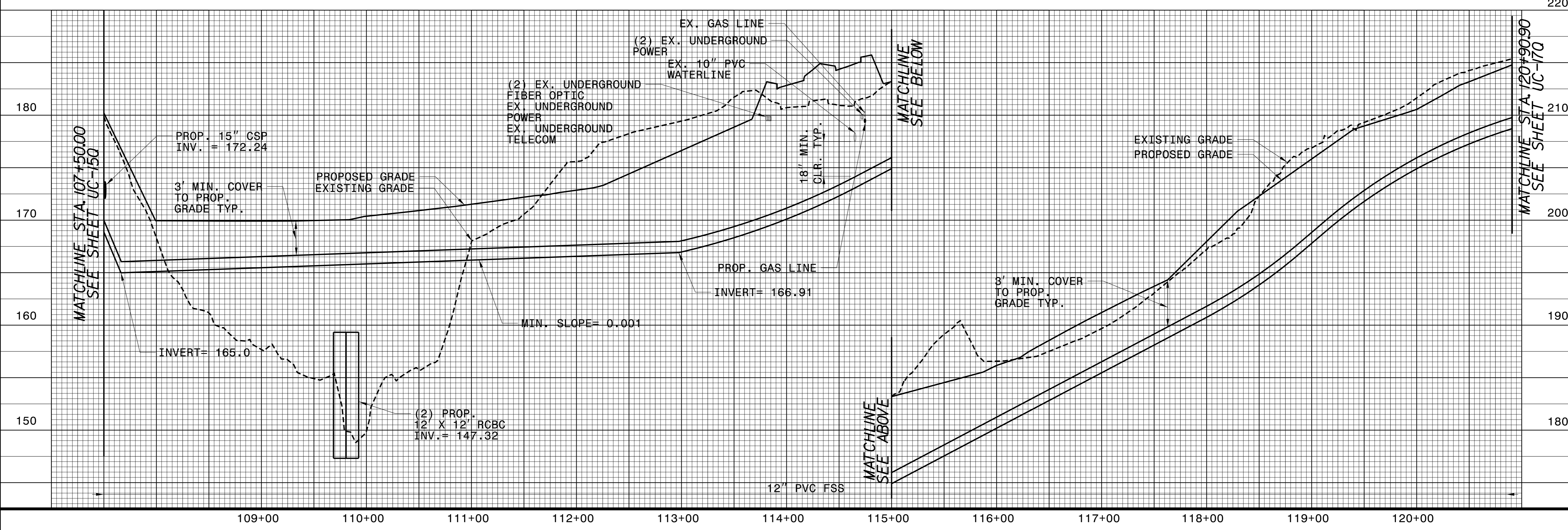
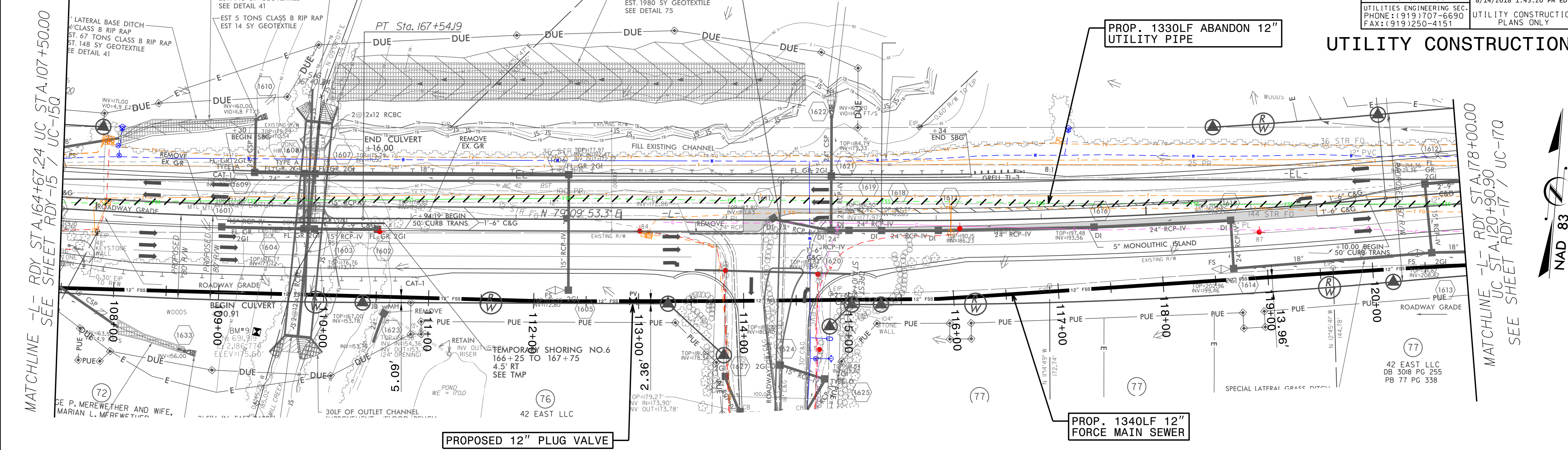
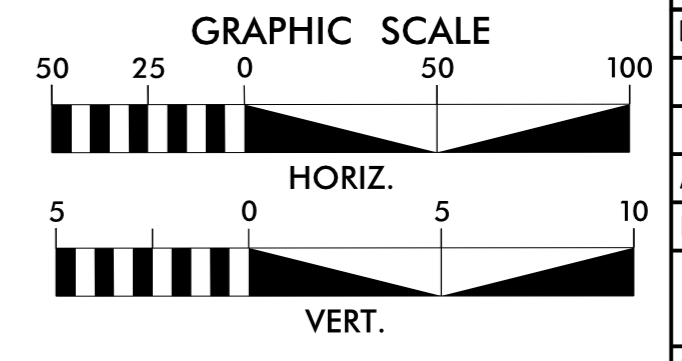


8/17/19  
REVISIONS

**Dewberry**

|   |   |
|---|---|
| PROJECT REFERENCE NO.<br><b>R-3825B</b> | SHEET NO.<br><b>UC-16Q</b>  |
| DESIGNED BY:                            |   |
| DRAWN BY:                               |   |
| CHECKED BY:                             |   |
| APPROVED BY:                            |   |
| REVISED:                                | NORTH CAROLINA DEPARTMENT OF TRANSPORTATION<br>UTILITIES ENGINEERING SEC.<br>PHONE: (919) 707-6690<br>FAX: (919) 250-4151 |
| 8/14/2018 1:43:20 PM EDT                |   |
| UTILITY CONSTRUCTION PLANS ONLY         |   |

**NOTE:**  
 THE ESTIMATED QUANTITY OF DUCTILE IRON SEWER PIPE FITTINGS ON THIS PLAN SHEET IS 500 POUNDS. THE ACTUAL QUANTITY AND TYPE OF FITTINGS WILL VARY BASED ON FIELD CONDITIONS.



MATCHLINE -L- RDY STA. 164+67.24 UC STA. 107+50.00  
 SEE SHEET RDY-15 / UC-15Q

MATCHLINE -L- RDY STA. 178+00.00  
 UC STA. 120+90.90  
 SEE SHEET RDY-17 / UC-17Q

PROPOSED 12" PLUG VALVE

PROP. 1340LF 12" FORCE MAIN SEWER

220

180