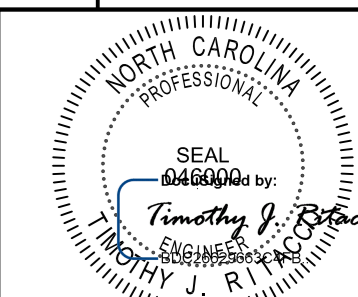
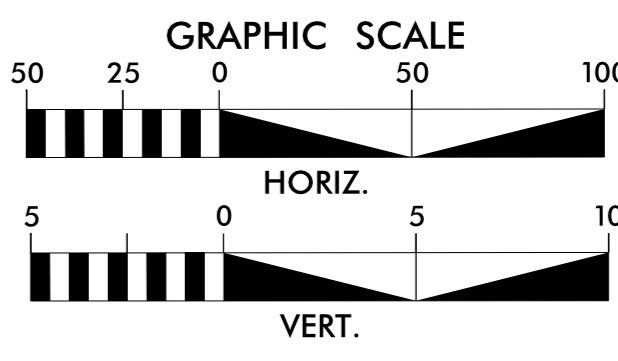
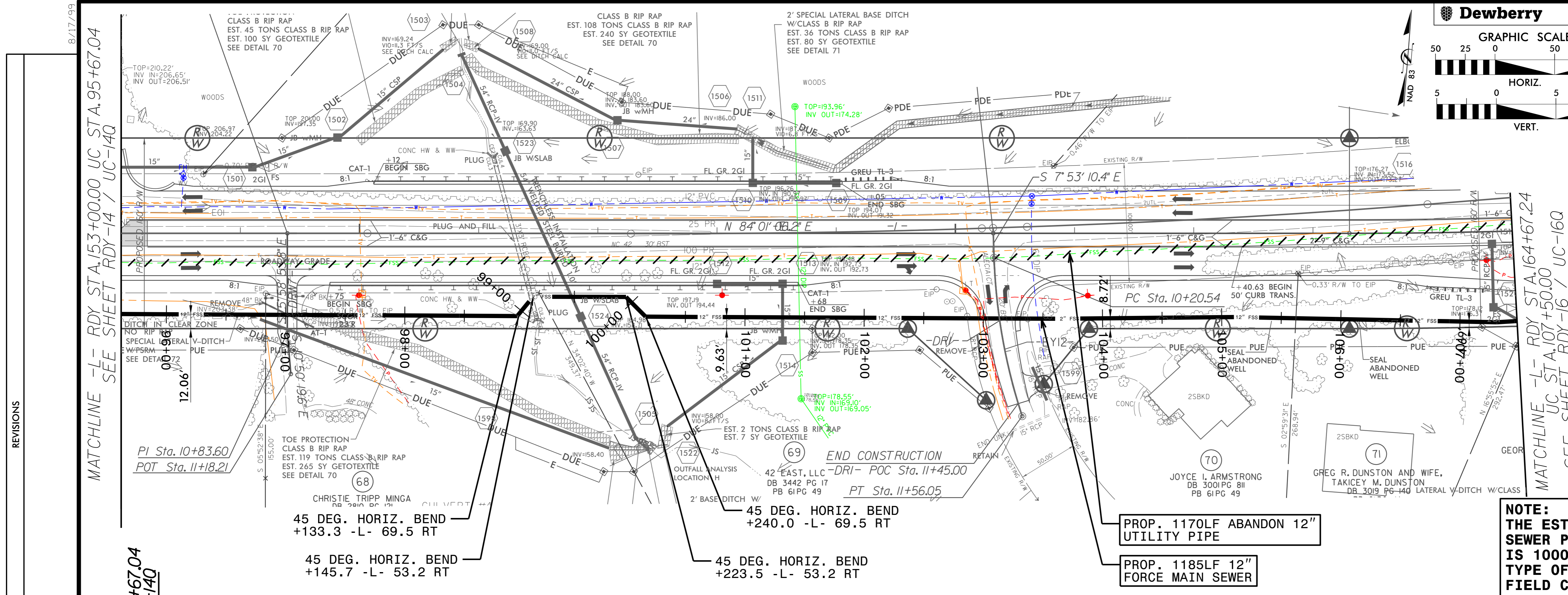


Dewberry

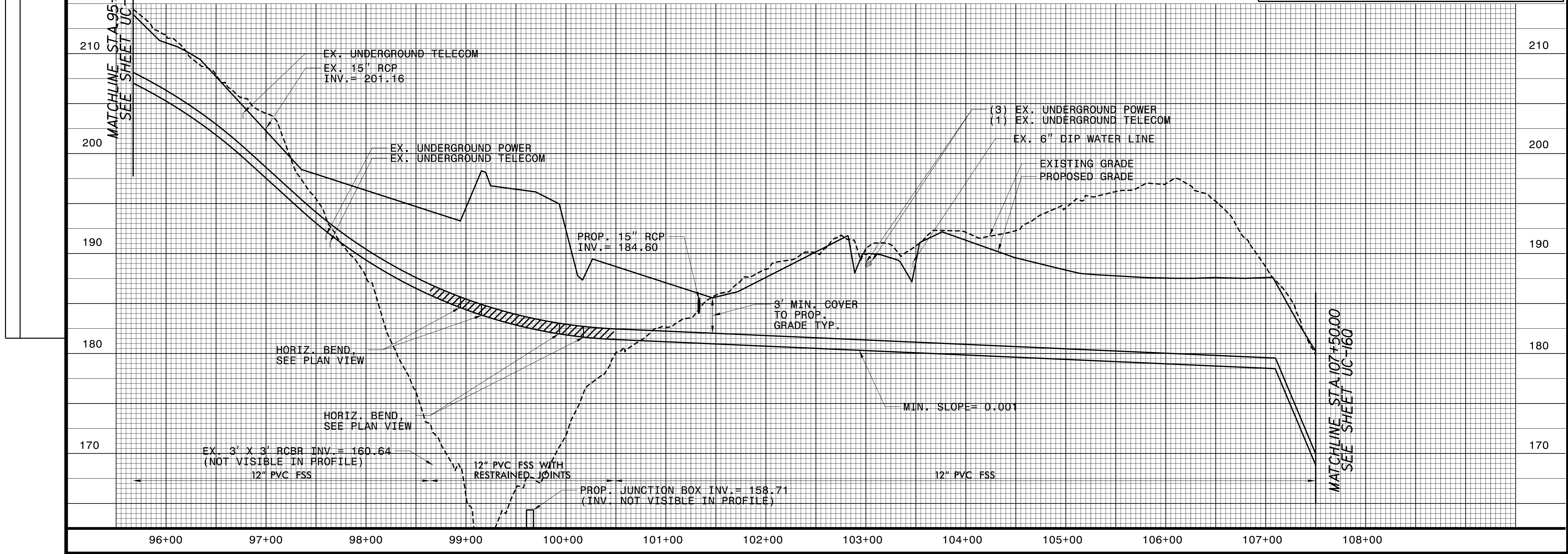
| | |
|---|--|
| PROJECT REFERENCE NO. R-3825B | SHEET NO. UC-150 |
| DESIGNED BY: |  |
| DRAWN BY: | |
| CHECKED BY: | |
| APPROVED BY: | |
| REVISED: | 8/14/2018 1:43:20 PM EDT |
| NORTH CAROLINA DEPARTMENT OF TRANSPORTATION UTILITIES ENGINEERING SEC. PHONE: (919) 707-6690 FAX: (919) 250-4151 | |
| UTILITY CONSTRUCTION PLANS ONLY | |



UTILITY CONSTRUCTION



NOTE:
THE ESTIMATED QUANTITY OF DUCTILE IRON SEWER PIPE FITTINGS ON THIS PLAN SHEET IS 1000 POUNDS. THE ACTUAL QUANTITY AND TYPE OF FITTINGS WILL VARY BASED ON FIELD CONDITIONS.



REVISIONS

MATCHLINE -L- RDY STA. 153+00.00 UC STA. 95+67.04
SEE SHEET RDY-14 / UC-140

MATCHLINE -L- RDY STA. 164+67.24
UC STA. 107+50.00
SEE SHEET RDY-16 / UC-160

MATCHLINE STA. 95+67.04
SEE SHEET UC-140

MATCHLINE STA. 107+50.00
SEE SHEET UC-160