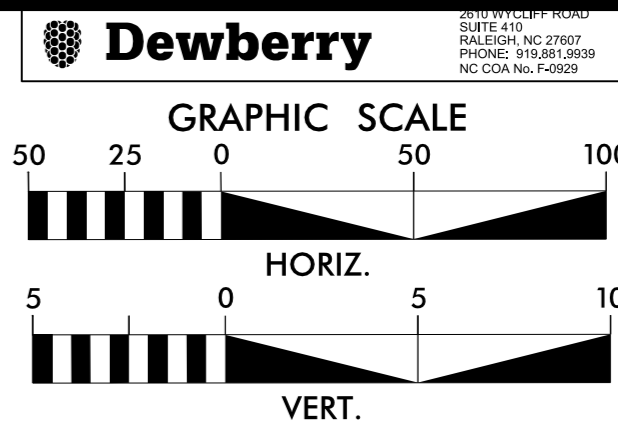


8/17/19

REFER TO UC-13A FOR PLAN INFORMATION

NOTE: THE ESTIMATED QUANTITY OF DUCTILE IRON SEWER PIPE FITTINGS ON THIS PLAN SHEET IS 2000 POUNDS. THE ACTUAL QUANTITY AND TYPE OF FITTINGS WILL VARY BASED ON FIELD CONDITIONS.

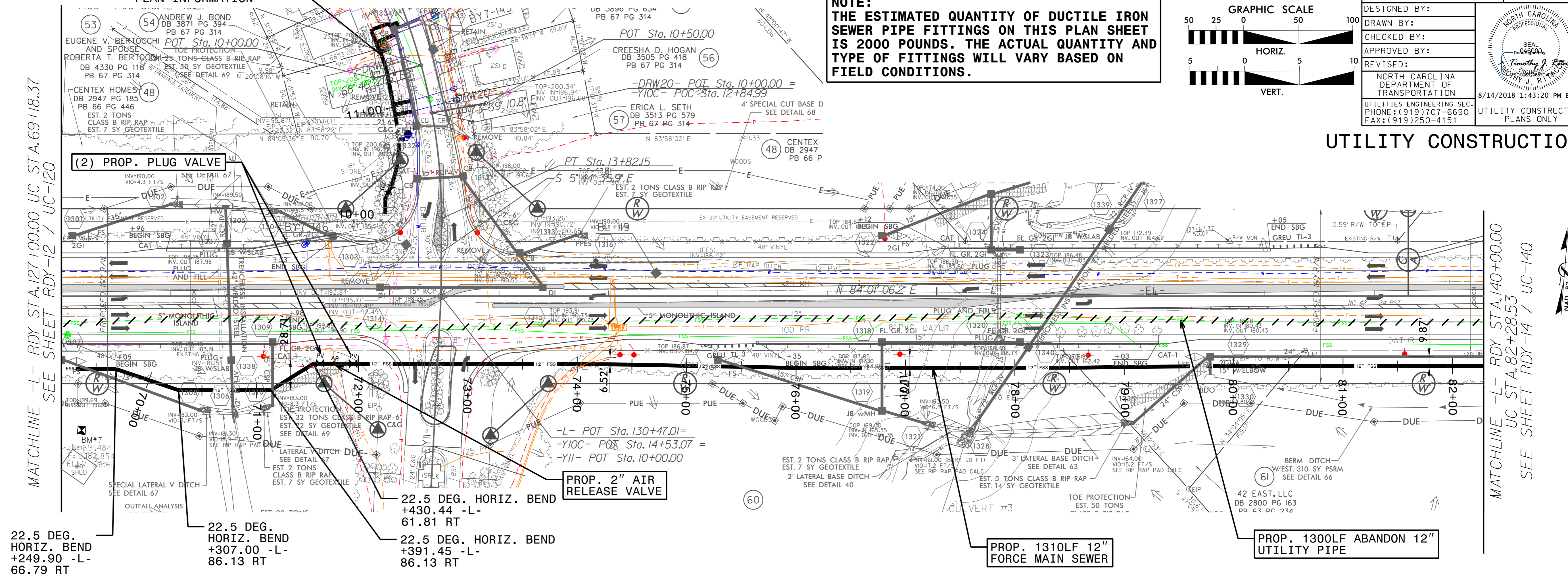


PROJECT REFERENCE NO. R-3825B	SHEET NO. UC-130
DESIGNED BY:	
DRAWN BY:	
CHECKED BY:	
APPROVED BY:	
REVISED:	NORTH CAROLINA DEPARTMENT OF TRANSPORTATION UTILITIES ENGINEERING SEC. PHONE: (919) 707-6690 FAX: (919) 250-4151
8/14/2018 1:43:20 PM EDT	
UTILITY CONSTRUCTION PLANS ONLY	

### UTILITY CONSTRUCTION

MATCHLINE -L- RDY STA.127+00.00 UC STA.69+18.37  
SEE SHEET RDY-12 / UC-120

MATCHLINE -L- RDY STA.140+00.00 UC STA.82+28.53  
SEE SHEET RDY-14 / UC-140



22.5 DEG. HORIZ. BEND  
+249.90 -L-  
66.79 RT

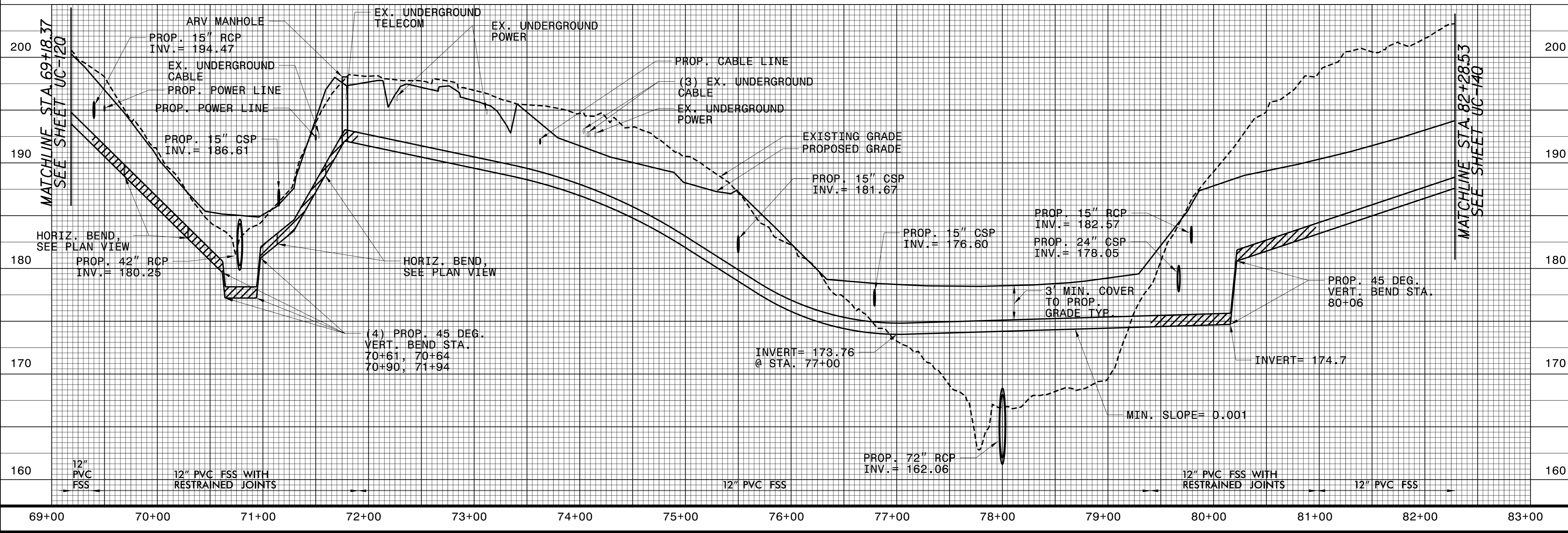
22.5 DEG. HORIZ. BEND  
+307.00 -L-  
86.13 RT

22.5 DEG. HORIZ. BEND  
+430.44 -L-  
61.81 RT

PROP. 2" AIR RELEASE VALVE

PROP. 1310LF 12" FORCE MAIN SEWER

PROP. 1300LF ABANDON 12" UTILITY PIPE



MATCHLINE STA.69+18.37  
SEE SHEET UC-120

MATCHLINE STA.82+28.53  
SEE SHEET UC-140

HORIZ. BEND, SEE PLAN VIEW  
PROP. 42" RCP  
INV. = 180.25

HORIZ. BEND, SEE PLAN VIEW

(4) PROP. 45 DEG. VERT. BEND STA.  
70+61, 70+64  
70+90, 71+94

INVERT= 173.76 @ STA. 77+00

INVERT= 174.7

PROP. 15" RCP  
INV. = 182.57  
PROP. 24" CSP  
INV. = 178.05

PROP. 15" CSP  
INV. = 176.60

ARV MANHOLE  
PROP. 15" RCP  
INV. = 194.47  
EX. UNDERGROUND CABLE  
PROP. POWER LINE  
PROP. POWER LINE  
PROP. 15" CSP  
INV. = 186.61

EX. UNDERGROUND TELECOM  
EX. UNDERGROUND POWER

PROP. CABLE LINE  
(3) EX. UNDERGROUND CABLE  
EX. UNDERGROUND POWER

EXISTING GRADE  
PROPOSED GRADE

3' MIN. COVER TO PROP. GRADE TYPE

PROP. 45 DEG. VERT. BEND STA. 80+06

PROP. 72" RCP  
INV. = 162.06

12" PVC FSS WITH RESTRAINED JOINTS

12" PVC FSS

12" PVC FSS

12" PVC FSS WITH RESTRAINED JOINTS

12" PVC FSS

69+00 70+00 71+00 72+00 73+00 74+00 75+00 76+00 77+00 78+00 79+00 80+00 81+00 82+00 83+00