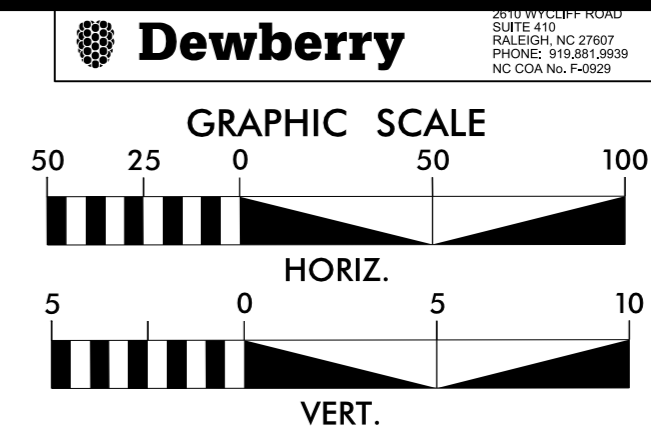


8/17/19

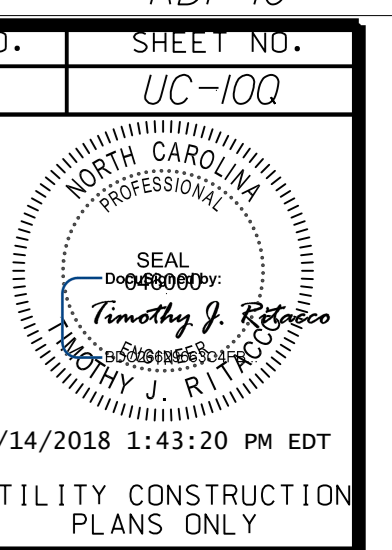
MATCHLINE -L- RDY STA.88+00.00 UC STA.30+05.85
SEE SHEET RDY-9 / UC-90

NOTE:
THE ESTIMATED QUANTITY OF DUCTILE IRON SEWER PIPE FITTINGS ON THIS PLAN SHEET IS 800 POUNDS. THE ACTUAL QUANTITY AND TYPE OF FITTINGS WILL VARY BASED ON FIELD CONDITIONS.

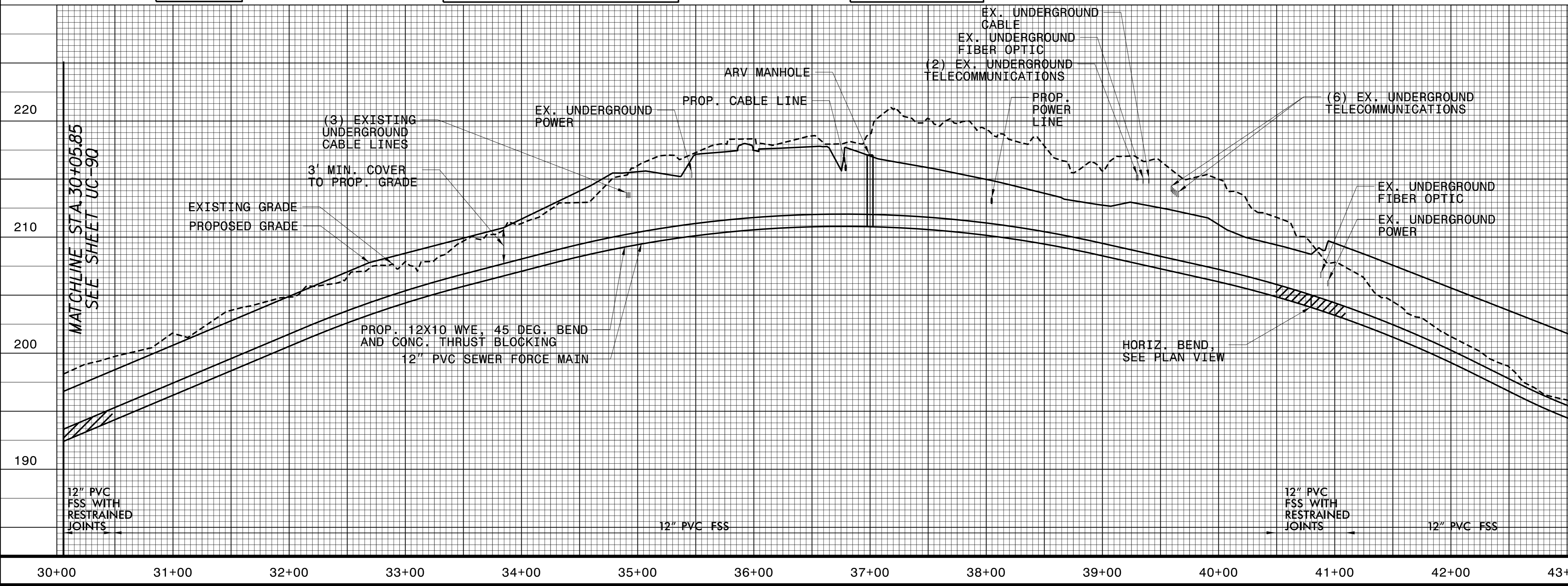
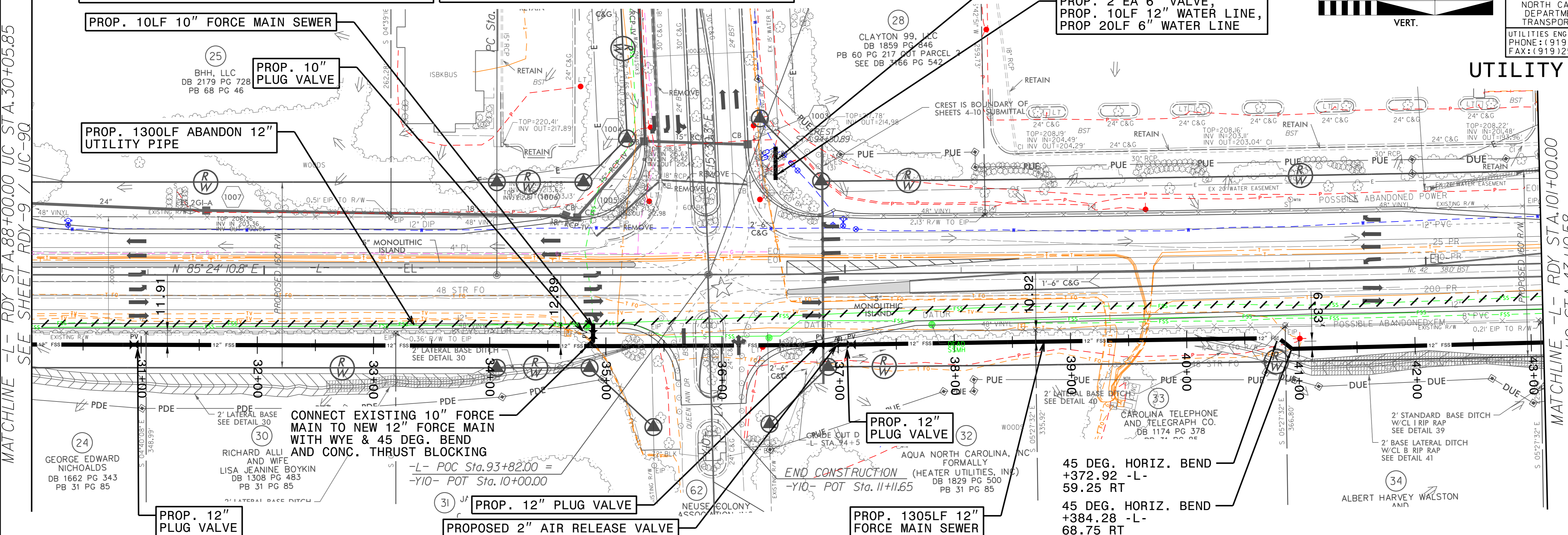
NOTE:
THE ESTIMATED QUANTITY OF DUCTILE IRON WATER PIPE FITTINGS ON THIS PLAN SHEET IS 1500 POUNDS. THE ACTUAL QUANTITY AND TYPE OF FITTINGS WILL VARY BASED ON FIELD CONDITIONS.



PROJECT REFERENCE NO.	R-3825B
SHEET NO.	UC-10Q
DESIGNED BY:	
DRAWN BY:	
CHECKED BY:	
APPROVED BY:	
REVISED:	
NORTH CAROLINA DEPARTMENT OF TRANSPORTATION	
UTILITIES ENGINEERING SEC. PHONE: (919) 707-6690 FAX: (919) 250-4151	
8/14/2018 1:43:20 PM EDT	
UTILITY CONSTRUCTION PLANS ONLY	



UTILITY CONSTRUCTION



MATCHLINE -L- RDY STA.101+00.00
UC STA.43+10.58
SEE SHEET RDY-11 / UC-11Q

REVISIONS

