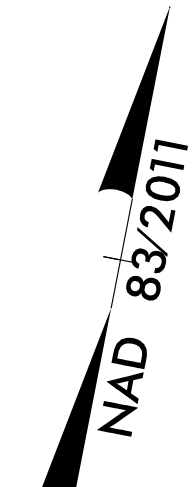


PROJECT REFERENCE NO.	SHEET NO.
R-3825B	UC-19
DESIGNED BY:	9/17/2018
DRAWN BY:	
CHECKED BY:	
APPROVED BY:	
REVISED:	
NORTH CAROLINA DEPARTMENT OF TRANSPORTATION UTILITIES ENGINEERING SECTION PHONE: (919) 707-6690 FAX: (919) 250-4151	
D. Stephen Scruggs LICENSE NO. 10666 SEAL PROFESSIONAL ENGINEER CIVIL	

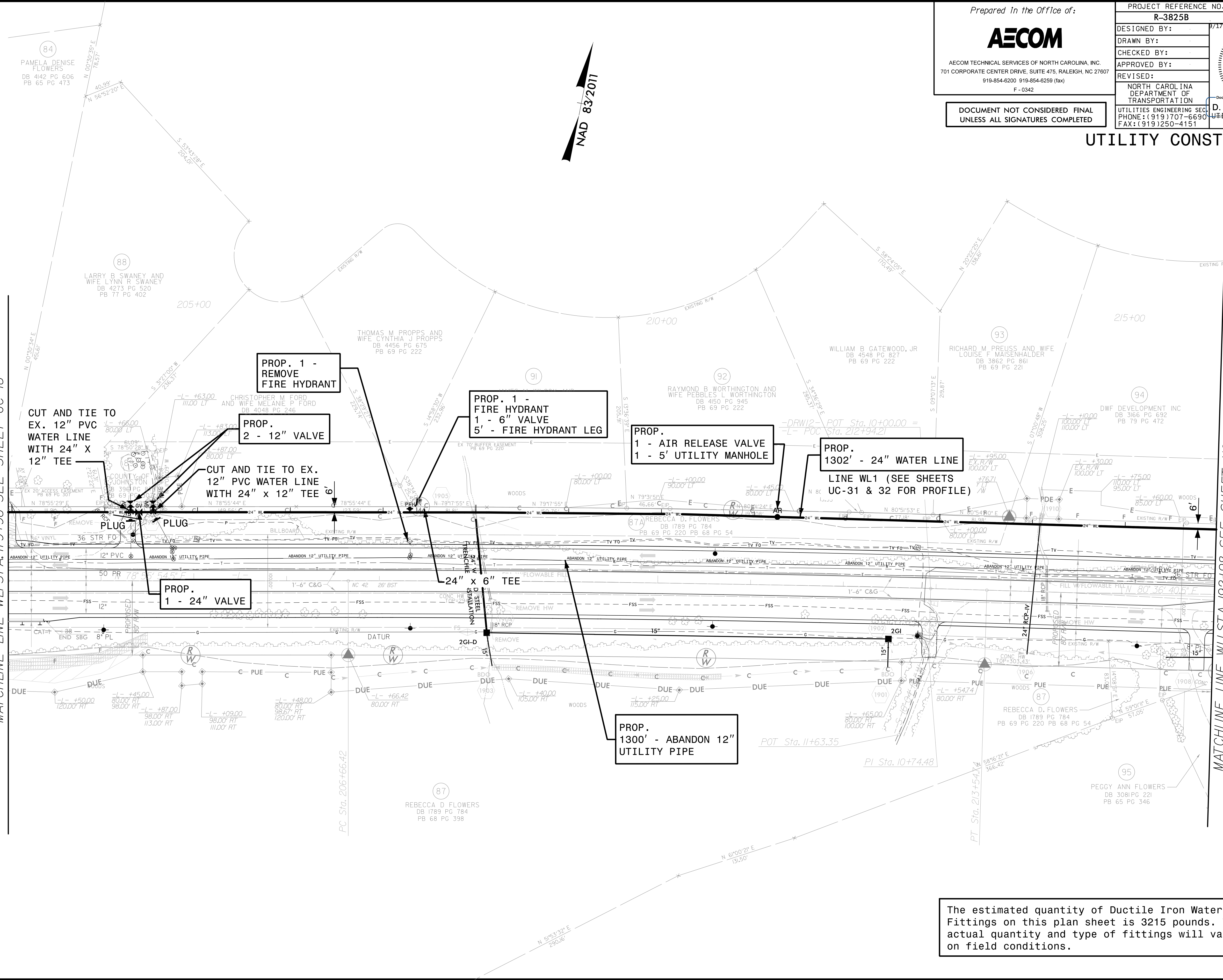
DOCUMENT NOT CONSIDERED FINAL
UNLESS ALL SIGNATURES COMPLETED

UTILITY CONSTRUCTION



MATCHLINE LINE WL STA. 179+96 SEE SHEET UC-18

MATCHLINE LINE WL STA. 192+98 SEE SHEET UC-20



DATE: 9/17/2018
TIME: 12:52:00 PM
DGN: R3825B_UC_PAN9509

The estimated quantity of Ductile Iron Water Pipe Fittings on this plan sheet is 3215 pounds. The actual quantity and type of fittings will vary based on field conditions.