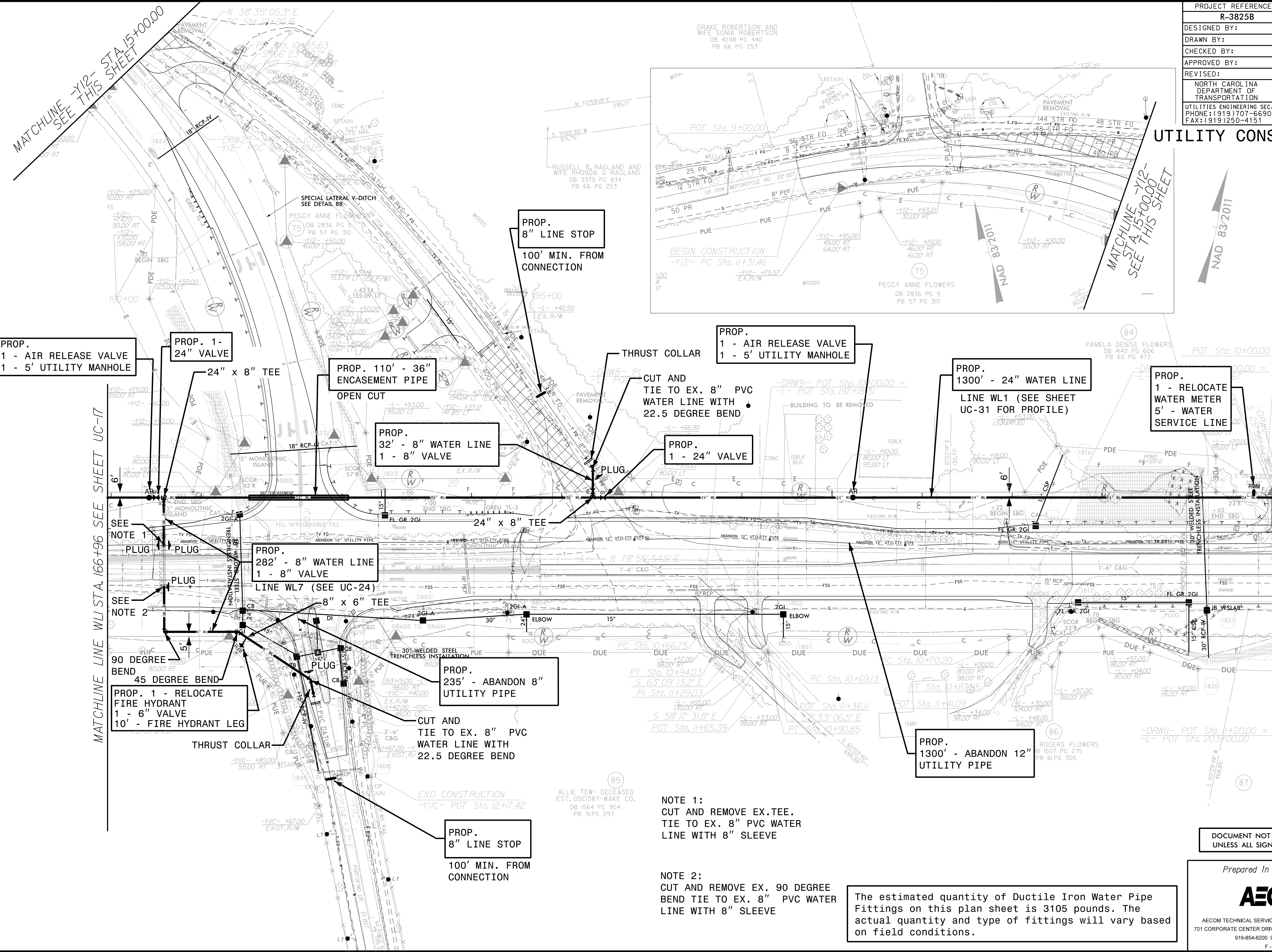


PROJECT REFERENCE NO.	SHEET NO.
R-3825B	UC-18
DESIGNED BY:	8/9/2018
DRAWN BY:	
CHECKED BY:	
APPROVED BY:	
REVISED:	
NORTH CAROLINA PROFESSIONAL SEAL 10666	
D. Stephen Scruggs	
NORTH CAROLINA DEPARTMENT OF TRANSPORTATION UTILITIES ENGINEERING SEC. PHONE: (919) 707-6690 FAX: (919) 250-4151	

# UTILITY CONSTRUCTION



PROP.  
1 - AIR RELEASE VALVE  
1 - 5' UTILITY MANHOLE

PROP. 1 -  
24" VALVE

PROP. 110' - 36"  
ENCASEMENT PIPE  
OPEN CUT

PROP.  
32' - 8" WATER LINE  
1 - 8" VALVE

PROP.  
8" LINE STOP  
100' MIN. FROM  
CONNECTION

PROP.  
1 - AIR RELEASE VALVE  
1 - 5' UTILITY MANHOLE

PROP.  
1300' - 24" WATER LINE  
LINE WL1 (SEE SHEET  
UC-31 FOR PROFILE)

PROP.  
1 - RELOCATE  
WATER METER  
5' - WATER  
SERVICE LINE

PROP.  
282' - 8" WATER LINE  
1 - 8" VALVE  
LINE WL7 (SEE UC-24)

PROP.  
235' - ABANDON 8"  
UTILITY PIPE

PROP. 1 - RELOCATE  
FIRE HYDRANT  
1 - 6" VALVE  
10' - FIRE HYDRANT LEG

PROP.  
1300' - ABANDON 12"  
UTILITY PIPE

PROP.  
8" LINE STOP  
100' MIN. FROM  
CONNECTION

NOTE 1:  
CUT AND REMOVE EX.TEE.  
TIE TO EX. 8" PVC WATER  
LINE WITH 8" SLEEVE

NOTE 2:  
CUT AND REMOVE EX. 90 DEGREE  
BEND TIE TO EX. 8" PVC WATER  
LINE WITH 8" SLEEVE

The estimated quantity of Ductile Iron Water Pipe Fittings on this plan sheet is 3105 pounds. The actual quantity and type of fittings will vary based on field conditions.

DOCUMENT NOT CONSIDERED FINAL  
UNLESS ALL SIGNATURES COMPLETED

Prepared In the Office of:



AECOM TECHNICAL SERVICES OF NORTH CAROLINA, INC.  
701 CORPORATE CENTER DRIVE, SUITE 475, RALEIGH, NC 27607  
919-854-6200 919-854-6259 (fax)  
F - 0342

DATE: 8/9/2018  
TIME: 3:45:00 PM  
DGN: R3825B\_UC\_PAN650P

MATCHLINE LINE WL1 STA. 166+96 SEE SHEET UC-17

MATCHLINE LINE WL1 STA. 179+96 SEE SHEET 19

MATCHLINE -Y12- STA. 15+00.00  
SEE THIS SHEET

MATCHLINE -Y12- STA. 15+00.00  
SEE THIS SHEET