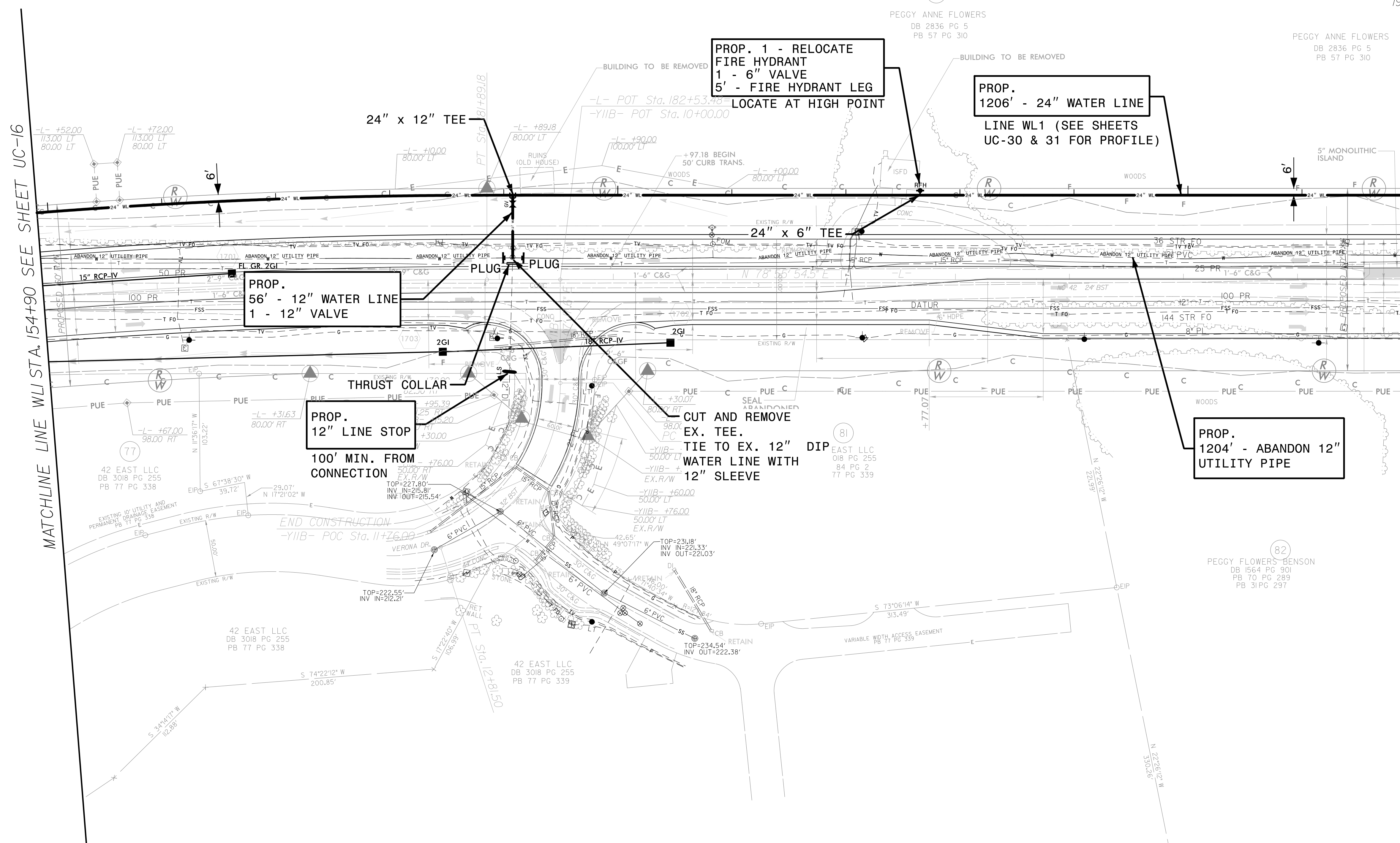


UTILITY CONSTRUCTION

MATCHLINE LINE WL1 STA. 154+90 SEE SHEET UC-16

MATCHLINE LINE WL1 STA. 166+96 SEE SHEET UC-18



PROP. 1 - RELOCATE
FIRE HYDRANT
1 - 6" VALVE
5' - FIRE HYDRANT LEG
LOCATE AT HIGH POINT

PROP.
1206' - 24" WATER LINE
LINE WL1 (SEE SHEETS
UC-30 & 31 FOR PROFILE)

PROP.
56' - 12" WATER LINE
1 - 12" VALVE

PROP.
12" LINE STOP
100' MIN. FROM
CONNECTION

CUT AND REMOVE
EX. TEE.
TIE TO EX. 12" DIP
WATER LINE WITH
12" SLEEVE

PROP.
1204' - ABANDON 12"
UTILITY PIPE

The estimated quantity of Ductile Iron Water Pipe Fittings on this plan sheet is 2240 pounds. The actual quantity and type of fittings will vary based on field conditions.