

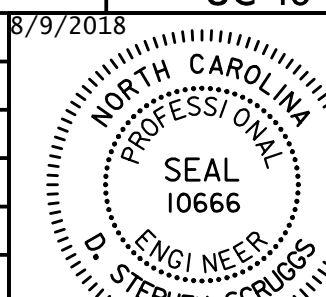
Prepared In the Office of:



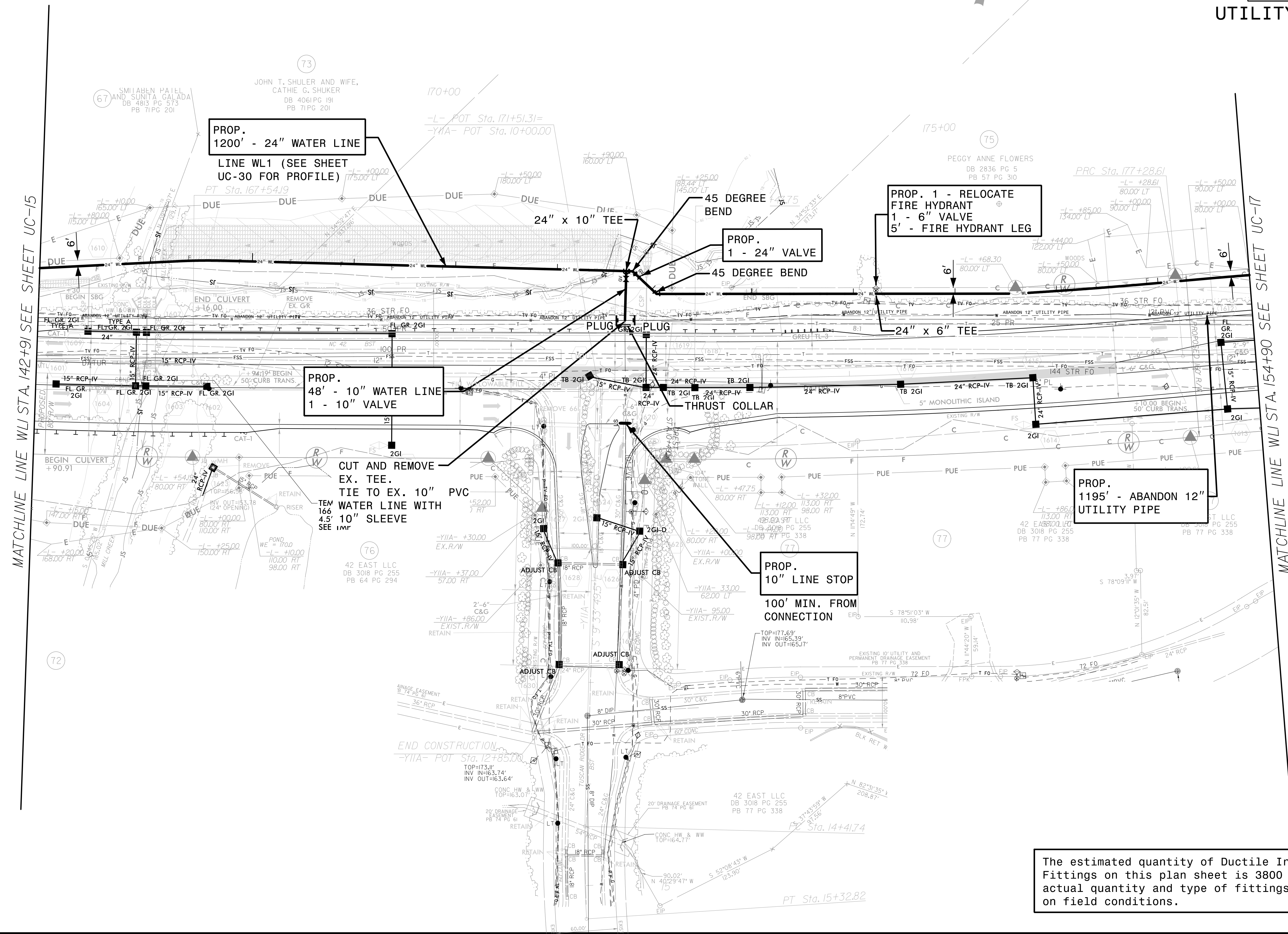
AECOM TECHNICAL SERVICES OF NORTH CAROLINA, INC.  
701 CORPORATE CENTER DRIVE, SUITE 475, RALEIGH, NC 27607  
919-854-6200 919-854-6259 (fax)  
F-0342

DOCUMENT NOT CONSIDERED FINAL  
UNLESS ALL SIGNATURES COMPLETED

PROJECT REFERENCE NO.	SHEET NO.
R-3825B	UC-16
DESIGNED BY:	8/9/2018
DRAWN BY:	
CHECKED BY:	
APPROVED BY:	
REVISED:	
NORTH CAROLINA DEPARTMENT OF TRANSPORTATION	
UTILITIES ENGINEERING SEC. PHONE: (919) 707-6690 FAX: (919) 250-4151	
D. Stephen Scruggs UTILITY CONSTRUCTION PLANS ONLY	



# UTILITY CONSTRUCTION



MATCHLINE LINE WL STA. 142+91 SEE SHEET UC-15

MATCHLINE LINE WL STA. 154+90 SEE SHEET UC-17

PROP. 1200' - 24" WATER LINE  
LINE WL1 (SEE SHEET UC-30 FOR PROFILE)  
PT Sta. 167+54.19

PROP. 48' - 10" WATER LINE  
1 - 10" VALVE

PROP. 1 - RELOCATE FIRE HYDRANT  
1 - 6" VALVE  
5' - FIRE HYDRANT LEG

PROP. 1195' - ABANDON 12" UTILITY PIPE

PROP. 10" LINE STOP  
100' MIN. FROM CONNECTION

CUT AND REMOVE EX. TEE. TIE TO EX. 10" PVC WATER LINE WITH 4.5' 10" SLEEVE SEE IMP

DATE: 8/9/2018  
TIME: 3:44:17 PM  
DGN: R3825B\_UC\_Plan6.dgn

The estimated quantity of Ductile Iron Water Pipe Fittings on this plan sheet is 3800 pounds. The actual quantity and type of fittings will vary based on field conditions.