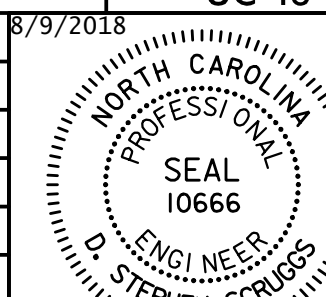


Prepared In the Office of:



AECOM TECHNICAL SERVICES OF NORTH CAROLINA, INC.
701 CORPORATE CENTER DRIVE, SUITE 475, RALEIGH, NC 27607
919-854-6200 919-854-6259 (fax)
F - 0342

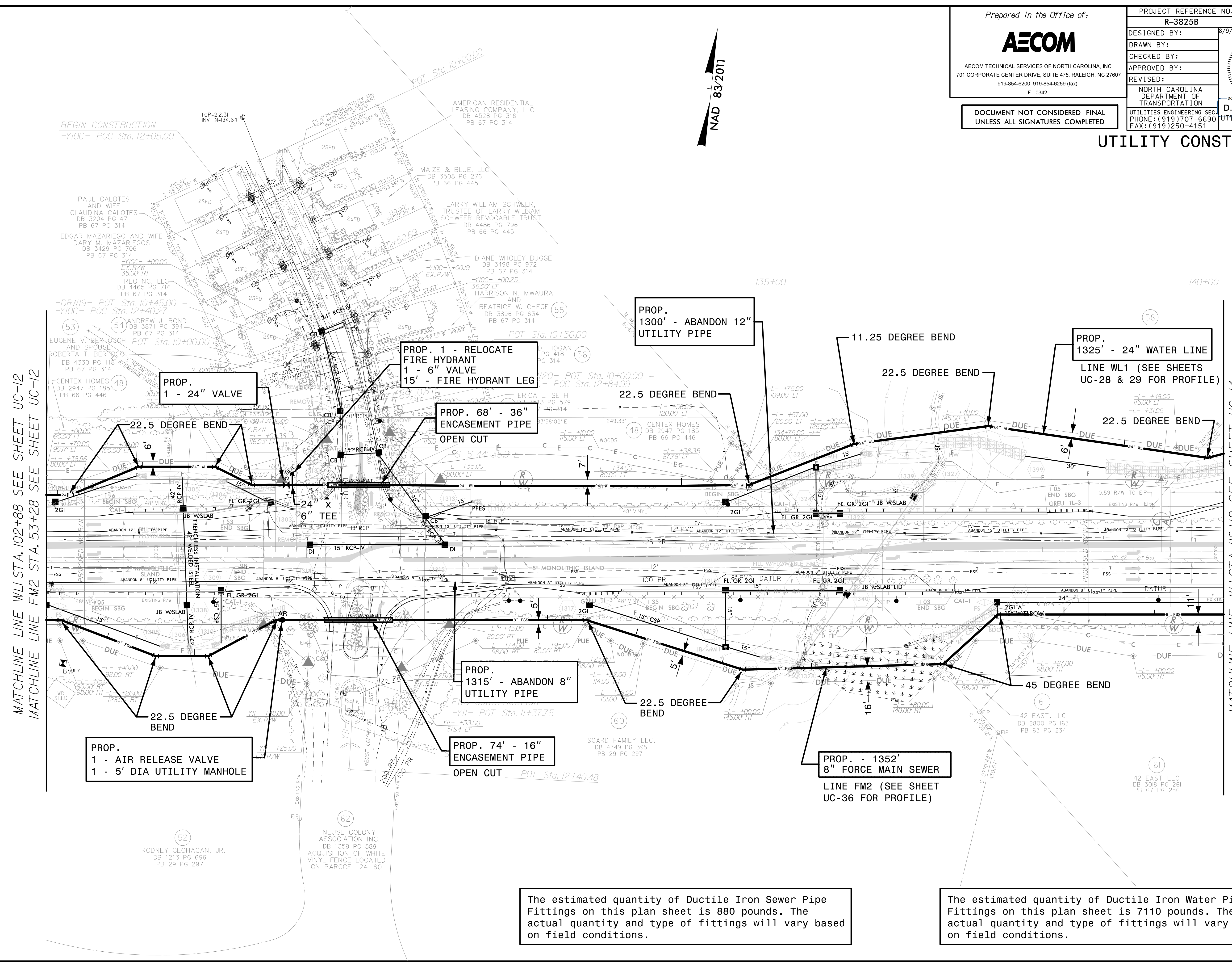
PROJECT REFERENCE NO.	R-3825B	SHEET NO.	UC-13
DESIGNED BY:		DATE:	8/9/2018
DRAWN BY:			
CHECKED BY:			
APPROVED BY:			
REVISED:			
NORTH CAROLINA DEPARTMENT OF TRANSPORTATION		D. Stephen Scruggs	
UTILITIES ENGINEERING SEC. PHONE: (919) 707-6690 FAX: (919) 250-4151		UTILITY CONSTRUCTION PLANS ONLY	



DOCUMENT NOT CONSIDERED FINAL
UNLESS ALL SIGNATURES COMPLETED

UTILITY CONSTRUCTION

NAD 83/2011



MATCHLINE LINE WL1 STA. 102+88 SEE SHEET UC-12
MATCHLINE LINE FM2 STA. 53+28 SEE SHEET UC-12

MATCHLINE LINE WL1 STA. 116+12 SEE SHEET UC-14
MATCHLINE LINE FM2 STA. 66+75 SEE SHEET UC-14

PROP. 1 - AIR RELEASE VALVE
1 - 5' DIA UTILITY MANHOLE

PROP. 1 - 24" VALVE

PROP. 1 - RELOCATE FIRE HYDRANT
1 - 6" VALVE
15' - FIRE HYDRANT LEG

PROP. 68' - 36" ENCASEMENT PIPE
OPEN CUT

PROP. 1300' - ABANDON 12" UTILITY PIPE

PROP. 1315' - ABANDON 8" UTILITY PIPE

PROP. 74' - 16" ENCASEMENT PIPE
OPEN CUT

PROP. - 1352' 8" FORCE MAIN SEWER
LINE FM2 (SEE SHEET UC-36 FOR PROFILE)

PROP. 1325' - 24" WATER LINE
LINE WL1 (SEE SHEETS UC-28 & 29 FOR PROFILE)

The estimated quantity of Ductile Iron Sewer Pipe Fittings on this plan sheet is 880 pounds. The actual quantity and type of fittings will vary based on field conditions.

The estimated quantity of Ductile Iron Water Pipe Fittings on this plan sheet is 7110 pounds. The actual quantity and type of fittings will vary based on field conditions.

DATE: 8/9/2018
TIME: 3:43:40 PM
DGN: R3825B_UC_Plan.dgn