

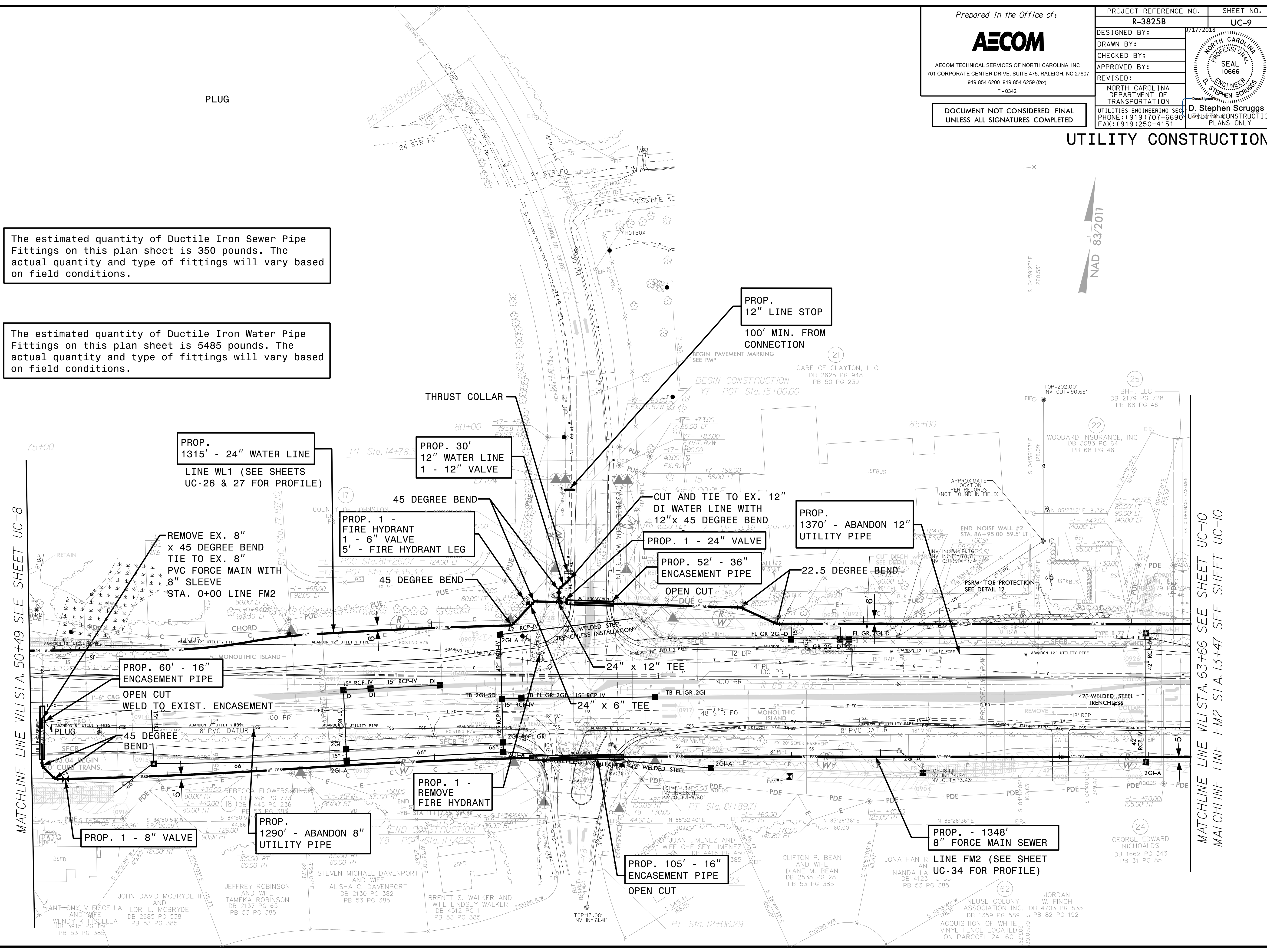
PROJECT REFERENCE NO.	R-3825B	SHEET NO.	UC-9
DESIGNED BY:		DATE:	9/17/2018
DRAWN BY:			
CHECKED BY:			
APPROVED BY:			
REVISED:			
NORTH CAROLINA DEPARTMENT OF TRANSPORTATION		D. Stephen Scruggs	
UTILITIES ENGINEERING SECTION		SEAL 10666	
PHONE: (919) 707-6690		FAX: (919) 250-4151	

DOCUMENT NOT CONSIDERED FINAL
UNLESS ALL NOTATIONS COMPLETED

UTILITY CONSTRUCTION

The estimated quantity of Ductile Iron Sewer Pipe Fittings on this plan sheet is 350 pounds. The actual quantity and type of fittings will vary based on field conditions.

The estimated quantity of Ductile Iron Water Pipe Fittings on this plan sheet is 5485 pounds. The actual quantity and type of fittings will vary based on field conditions.



MATCHLINE LINE WL1 STA. 50+49 SEE SHEET UC-8

MATCHLINE LINE WL1 STA. 63+66 SEE SHEET UC-10
MATCHLINE LINE FM2 STA. 13+47 SEE SHEET UC-10

DATE: 9/17/2018
TIME: 12:05:09 PM
DGN: R3825B_UC-9_PWD/BAM

ANTHONY V. FISCELLA AND WIFE
WENDY K. FISCELLA DB 3915 PG 180 PB 53 PG 385

JOHN DAVID MCBRYDE II AND WIFE
LORI L. MCBRYDE DB 2685 PG 538 PB 53 PG 385

JEFFREY ROBINSON AND WIFE
TAMEKA ROBINSON DB 2137 PG 65 PB 53 PG 385

STEVEN MICHAEL DAVENPORT AND WIFE
ALISHA C. DAVENPORT DB 2130 PG 382 PB 53 PG 385

BRENT S. WALKER AND WIFE
LINDSEY WALKER DB 4512 PG 1 PB 53 PG 385

CLIFTON P. BEAN AND WIFE
DIANE M. BEAN DB 2535 PG 28 PB 53 PG 385

JONATHAN R. AN AND WIFE
NANDA LA DB 4123 PG 1 PB 53 PG 385

JORDAN W. FINCH DB 4703 PG 535 PB 82 PG 192

NEUSE COLONY ASSOCIATION, INC.
DB 1359 PG 589

ACQUISITION OF WHITE VINYL FENCE LOCATED ON PARCEL 24-60

WOODARD INSURANCE, INC.
DB 3083 PG 64 PB 68 PG 46

BHH, LLC
DB 2179 PG 728 PB 68 PG 46

GEORGE EDWARD NICHOLDS
DB 1662 PG 343 PB 31 PG 85