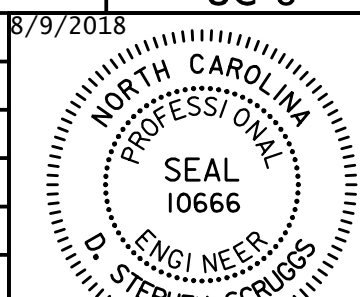


PROJECT REFERENCE NO.	SHEET NO.
R-3825B	UC-8
DESIGNED BY:	8/9/2018
DRAWN BY:	
CHECKED BY:	
APPROVED BY:	
REVISED:	
NORTH CAROLINA DEPARTMENT OF TRANSPORTATION	
UTILITIES ENGINEERING SECTION PHONE: (919) 707-6690 FAX: (919) 250-4151	



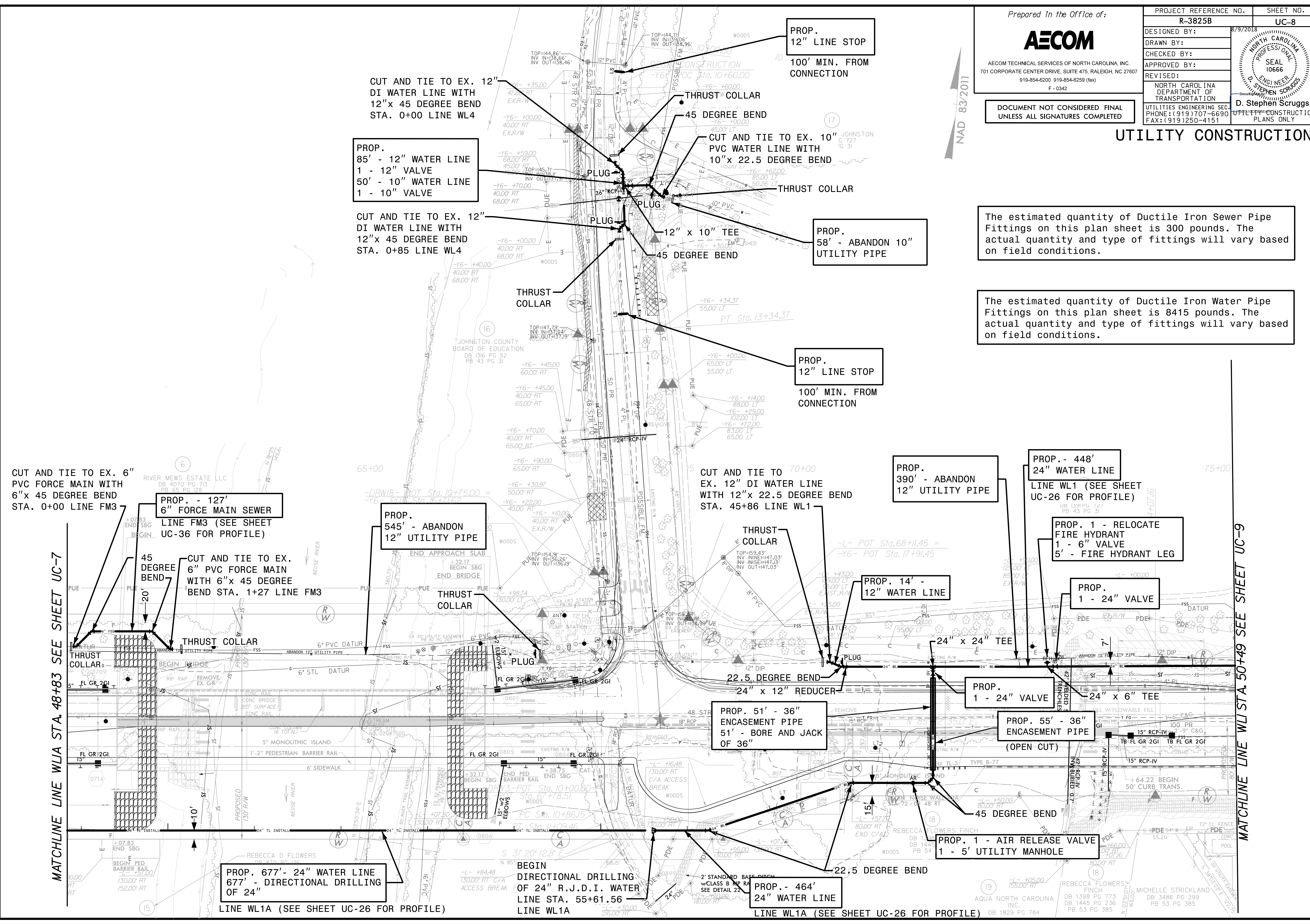
D. Stephen Scruggs
UTILITY CONSTRUCTION PLANS ONLY

DOCUMENT NOT CONSIDERED FINAL
UNLESS ALL SIGNATURES COMPLETED

UTILITY CONSTRUCTION

The estimated quantity of Ductile Iron Sewer Pipe Fittings on this plan sheet is 300 pounds. The actual quantity and type of fittings will vary based on field conditions.

The estimated quantity of Ductile Iron Water Pipe Fittings on this plan sheet is 8415 pounds. The actual quantity and type of fittings will vary based on field conditions.



CUT AND TIE TO EX. 6" PVC FORCE MAIN WITH 6"x 45 DEGREE BEND STA. 0+00 LINE FM3

PROP. - 127' 6" FORCE MAIN SEWER LINE FM3 (SEE SHEET UC-36 FOR PROFILE)

MATCHLINE LINE WL1A STA. 48+83 SEE SHEET UC-7

CUT AND TIE TO EX. 6" PVC FORCE MAIN WITH 6"x 45 DEGREE BEND STA. 1+27 LINE FM3

PROP. - ABANDON 12" UTILITY PIPE

CUT AND TIE TO EX. 12" DI WATER LINE WITH 12"x 45 DEGREE BEND STA. 0+00 LINE WL4

PROP. 85' - 12" WATER LINE 1 - 12" VALVE 50' - 10" WATER LINE 1 - 10" VALVE

CUT AND TIE TO EX. 12" DI WATER LINE WITH 12"x 45 DEGREE BEND STA. 0+85 LINE WL4

PROP. 12" LINE STOP 100' MIN. FROM CONNECTION

THRUST COLLAR 45 DEGREE BEND

CUT AND TIE TO EX. 10" PVC WATER LINE WITH 10"x 22.5 DEGREE BEND

PROP. 58' - ABANDON 10" UTILITY PIPE

PROP. 12" LINE STOP 100' MIN. FROM CONNECTION

CUT AND TIE TO EX. 12" DI WATER LINE WITH 12"x 22.5 DEGREE BEND STA. 45+86 LINE WL1

PROP. 390' - ABANDON 12" UTILITY PIPE

PROP. - 448' 24" WATER LINE LINE WL1 (SEE SHEET UC-26 FOR PROFILE)

PROP. 1 - RELOCATE FIRE HYDRANT 1 - 6" VALVE 5' - FIRE HYDRANT LEG

PROP. 1 - 24" VALVE

PROP. 14' - 12" WATER LINE

PROP. 1 - 24" VALVE

PROP. 55' - 36" ENCASUREMENT PIPE (OPEN CUT)

PROP. 51' - 36" ENCASUREMENT PIPE 51' - BORE AND JACK OF 36"

PROP. 1 - AIR RELEASE VALVE 1 - 5' UTILITY MANHOLE

PROP. 677' - 24" WATER LINE 677' - DIRECTIONAL DRILLING OF 24" LINE WL1A (SEE SHEET UC-26 FOR PROFILE)

BEGIN DIRECTIONAL DRILLING OF 24" R.J.D.I. WATER LINE STA. 55+61.56 LINE WL1A

PROP. - 464' 24" WATER LINE LINE WL1A (SEE SHEET UC-26 FOR PROFILE)

MATCHLINE LINE WL1 STA. 50+49 SEE SHEET UC-9