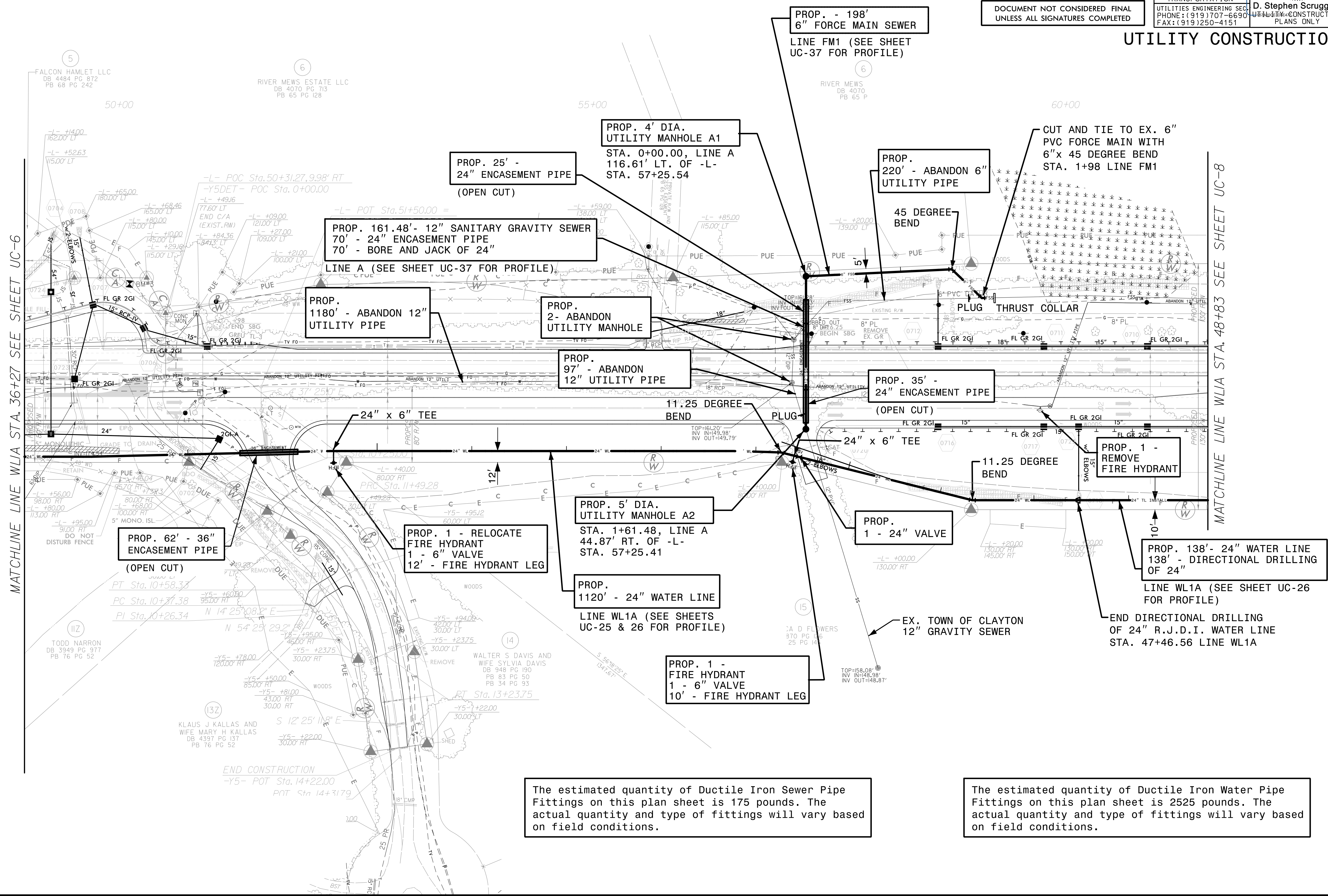


PROJECT REFERENCE NO.	SHEET NO.
R-3825B	UC-7
DESIGNED BY:	9/17/2018
DRAWN BY:	
CHECKED BY:	
APPROVED BY:	
REVISED:	
NORTH CAROLINA DEPARTMENT OF TRANSPORTATION	
UTILITIES ENGINEERING SECTION	
PHONE: (919) 707-6690	
FAX: (919) 250-4151	
D. Stephen Scruggs REGISTERED PROFESSIONAL ENGINEER SEAL 10666	

DOCUMENT NOT CONSIDERED FINAL
UNLESS ALL SIGNATURES COMPLETED

UTILITY CONSTRUCTION



The estimated quantity of Ductile Iron Sewer Pipe Fittings on this plan sheet is 175 pounds. The actual quantity and type of fittings will vary based on field conditions.

The estimated quantity of Ductile Iron Water Pipe Fittings on this plan sheet is 2525 pounds. The actual quantity and type of fittings will vary based on field conditions.