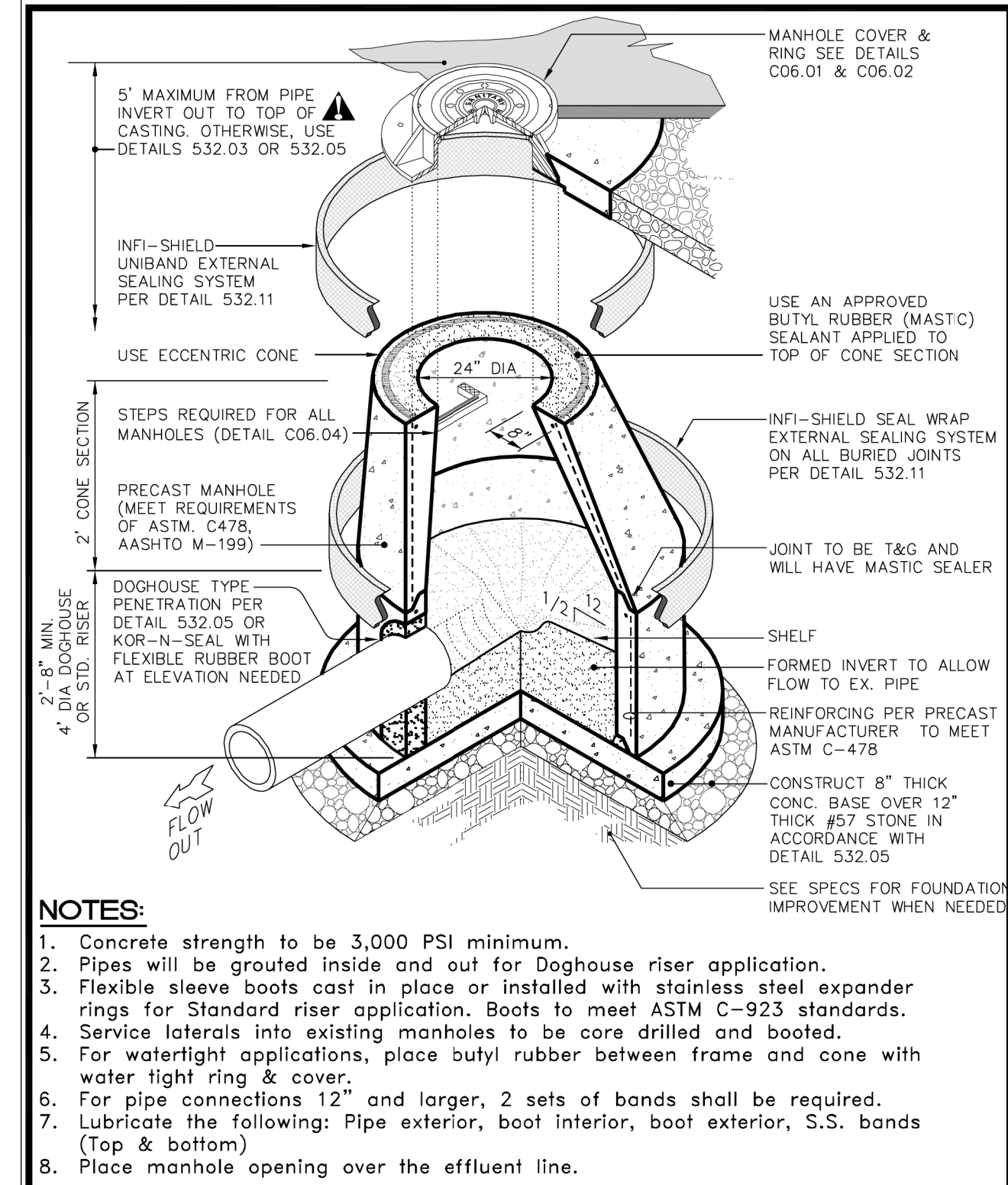


Details Provided by APPIAN Consulting Engineers - www.appianengineers.com 11/17/2010 - 5:04:37 PM

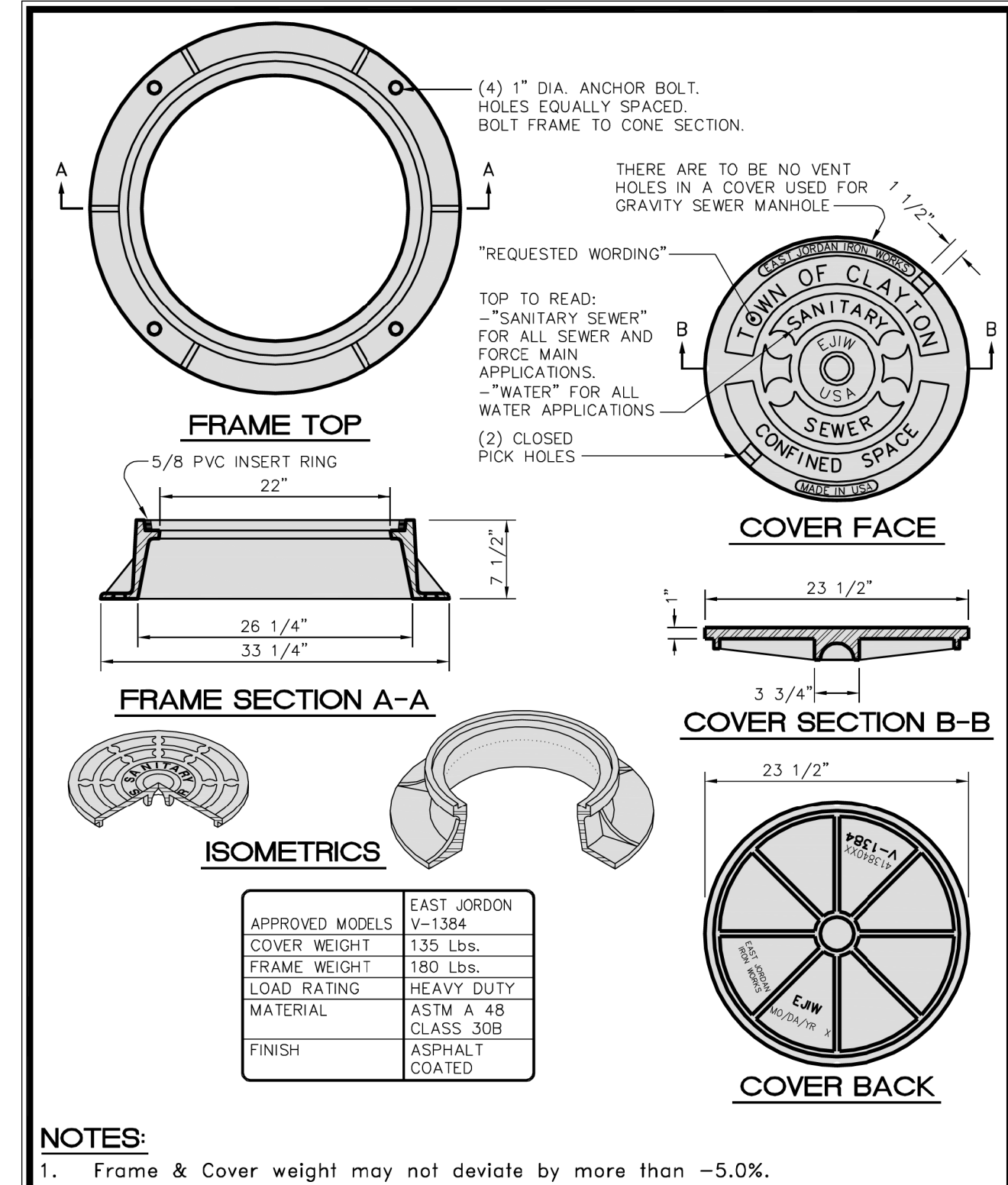


**TOWN of CLAYTON**  
USE WITH THE TOWN OF CLAYTON STANDARD SPECIFICATIONS ONLY

**TYPICAL SHALLOW PRECAST MANHOLE DETAIL**

SCALE: Not To Scale	DETAIL # S32.07
REVISION DATE: July, 2010	SHEET # 1 of 1

Details Provided by APPIAN Consulting Engineers - www.appianengineers.com 08/05/2010 - 5:09:49 PM



**TOWN of CLAYTON**  
USE WITH THE TOWN OF CLAYTON STANDARD SPECIFICATIONS ONLY

**STANDARD MANHOLE FRAME and COVER**

SCALE: Not To Scale	DETAIL # C06.01
REVISION DATE: July, 2010	SHEET # 1 of 1

Prepared In the Office of:

**AECOM**

AECOM TECHNICAL SERVICES OF NORTH CAROLINA, INC.  
701 CORPORATE CENTER DRIVE, SUITE 475, RALEIGH, NC 27607  
919-854-6200 919-854-6259 (fax)  
F-0342

DOCUMENT NOT CONSIDERED FINAL  
UNLESS ALL SIGNATURES COMPLETED

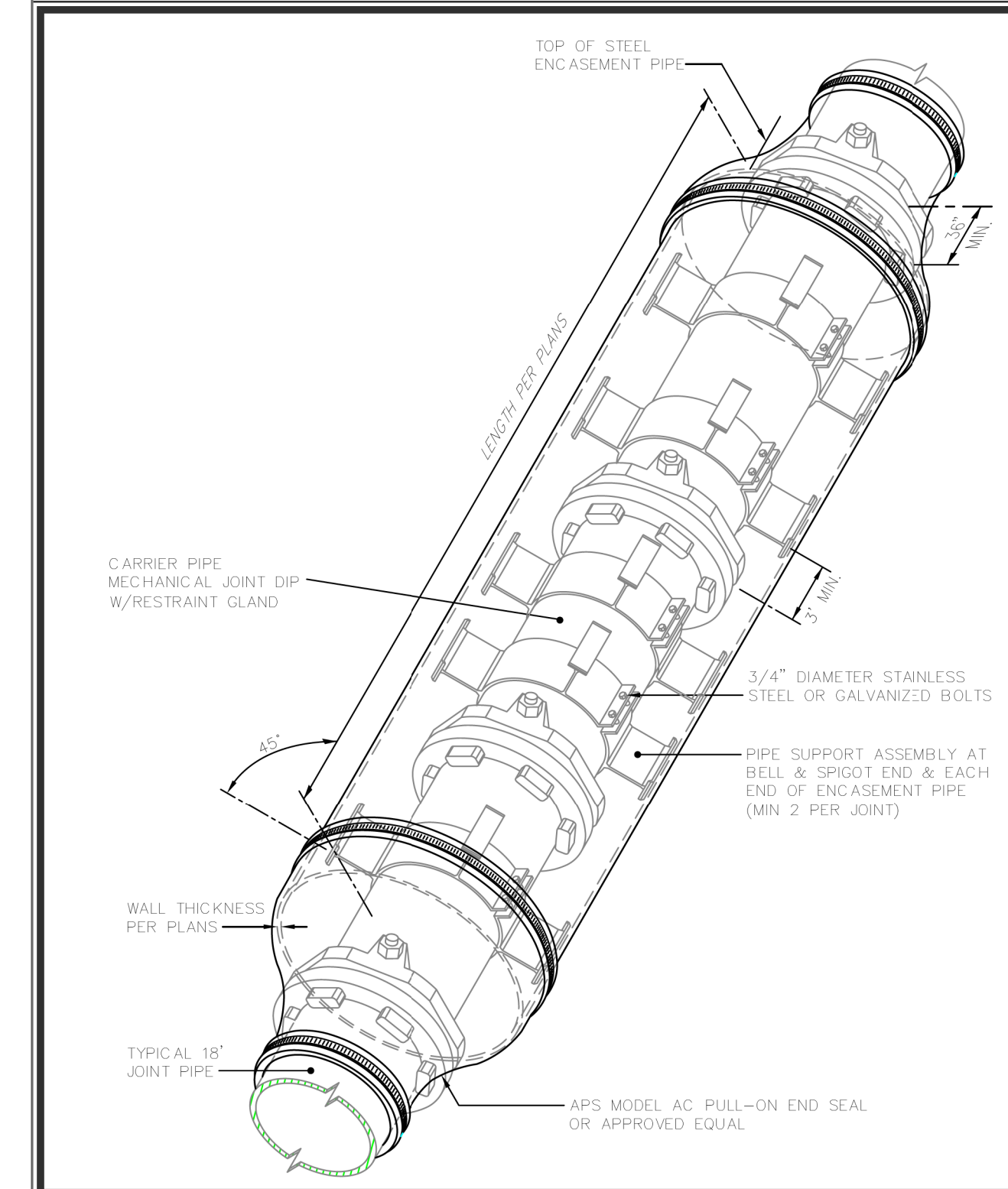
PROJECT REFERENCE NO. <b>R-3825B</b>	SHEET NO. <b>UC-3F</b>
DESIGNED BY:	8/10/2018
DRAWN BY:	
CHECKED BY:	
APPROVED BY:	
REVISED:	
NORTH CAROLINA DEPARTMENT OF TRANSPORTATION	
UTILITIES ENGINEERING SEC. PHONE: (919) 707-6690 FAX: (919) 250-4151	

SEAL 10666

D. Stephen Scruggs  
REGISTERED PROFESSIONAL ENGINEER  
UTILITY CONSTRUCTION PLANS ONLY

**UTILITY CONSTRUCTION**

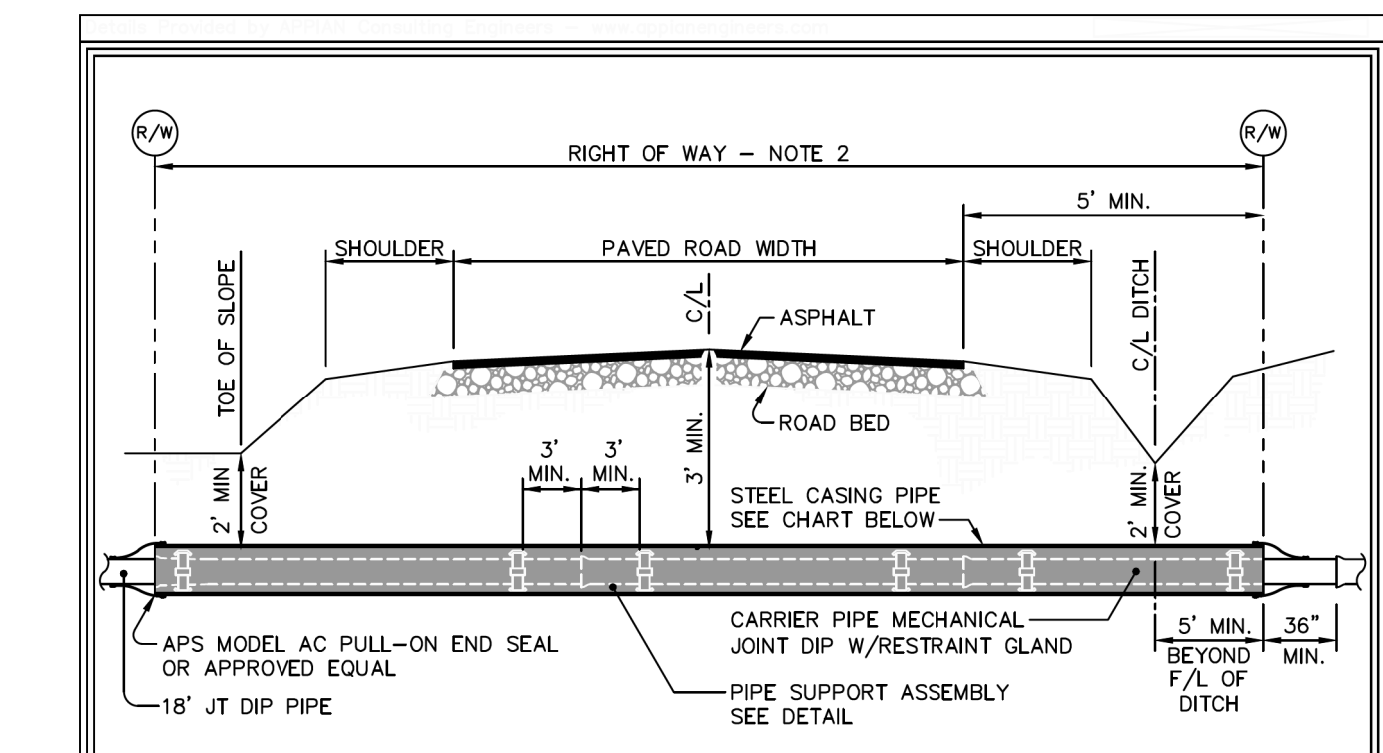
Details Provided by APPIAN Consulting Engineers - www.appianengineers.com



**TOWN of CLAYTON**  
USE WITH THE TOWN OF CLAYTON STANDARD SPECIFICATIONS ONLY

**TYPICAL DETAIL FOR BORE UNDER PAVED ROADS / HIGHWAYS**

SCALE: Not To Scale	DETAIL # C07.01
REVISION DATE: April, 2011	SHEET # 2 of 2



CARRIER PIPE NOMINAL DIAMETER	CARRIER PIPE OUTSIDE DIAMETER	CASING PIPE			
		RAILROAD OUTSIDE DIAMETER	RAILROAD WALL THICKNESS	HIGHWAY OUTSIDE DIAMETER	HIGHWAY WALL THICKNESS
6" & UNDER	6.90"	12 3/4"	0.188"	12 3/4"	0.250"
8"	9.05"	16"	0.250"	16"	0.250"
10"	11.10"	20"	0.281"	20"	0.250"
12"	13.20"	24"	0.344"	24"	0.250"
14"	15.30"	28"	0.406"	28"	0.312"
16"	17.40"	30"	0.406"	30"	0.312"
20"	21.60"	42"	0.563"	42"	0.312"
24"	25.80"	42"	0.563"	42"	0.312"

\*DIMENSIONS ARE WITHOUT COATINGS

- NOTES:**
- Installation by dry bore & jacking.
  - Bore to run from Right-of-Way to Right-of-Way unless approved otherwise by Town of Clayton.
  - Grease encasement pipe as required for ease of installation.
  - Steel pipe to be 35,000 psi min. yield strength, grade B.
  - All exposed metal to be coated with epoxy or asphaltic material.
  - Skids to be installed, manufactured by ITT Grinnell, Charlotte, N.C. / Spider Manufacturing, Durham, N.C. / APS casing spacers by Advanced Products Systems Inc, Lafayette, LA. / or approved equal.

**TOWN of CLAYTON**  
USE WITH THE TOWN OF CLAYTON STANDARD SPECIFICATIONS ONLY

**TYPICAL DETAIL FOR BORE UNDER PAVED ROADS / HIGHWAYS**

SCALE: Not To Scale	DETAIL # C07.01
REVISION DATE: July, 2010	SHEET # 1 of 2

DATE: 8/9/2018  
TIME: 6:02:57 PM  
DGN: R3825B\_UC\_P003F.dgn