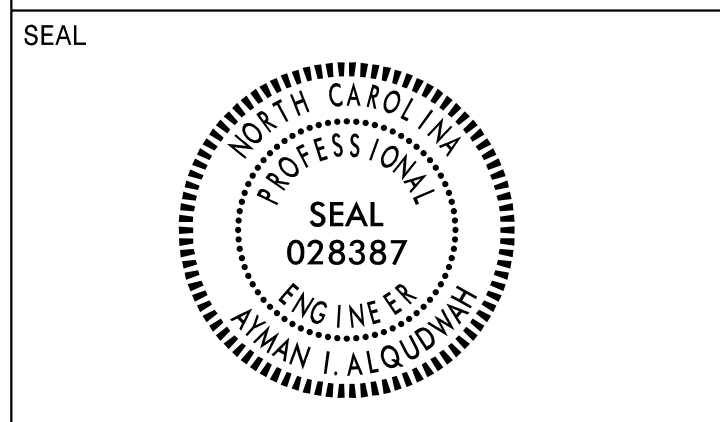
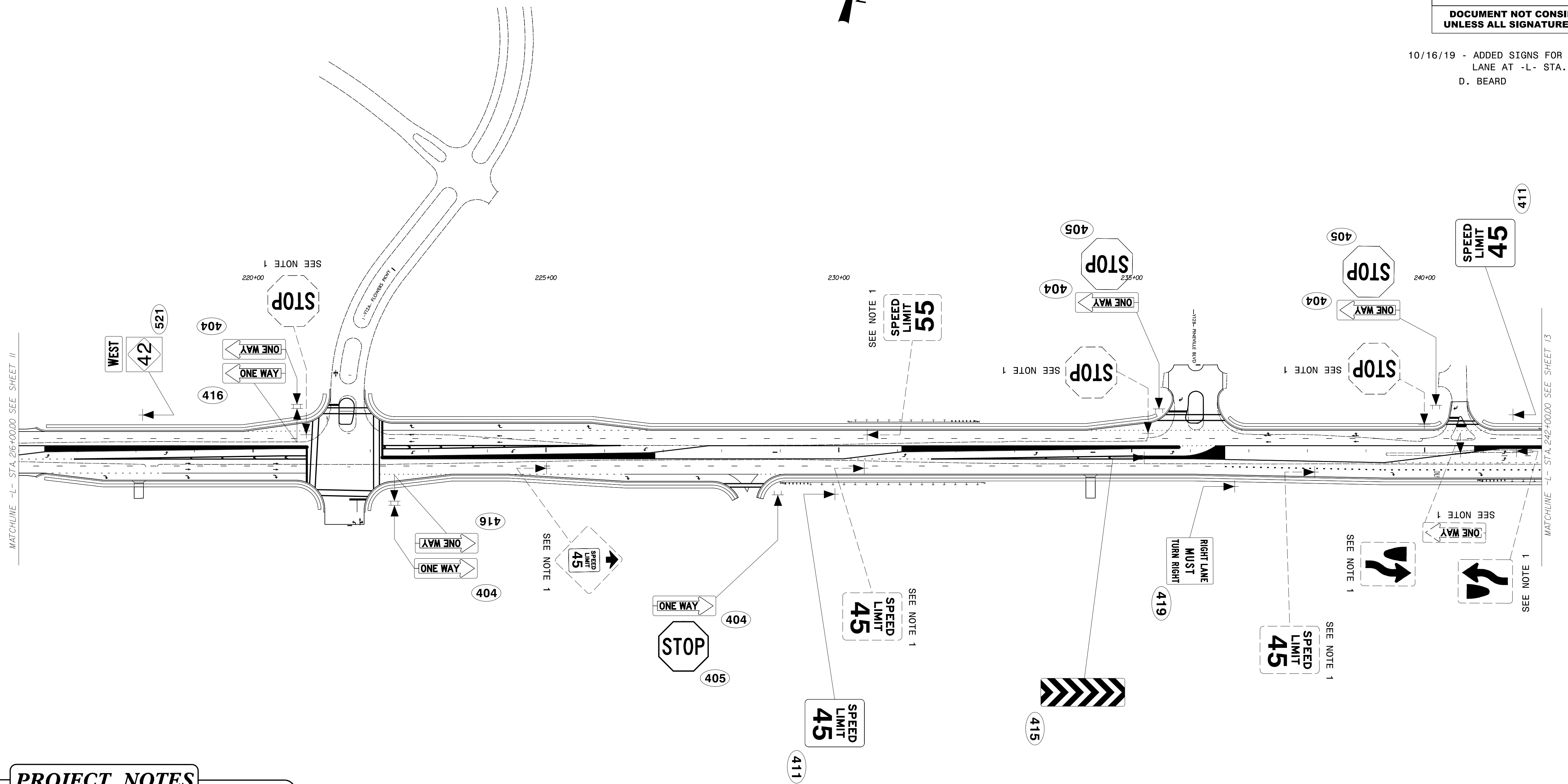
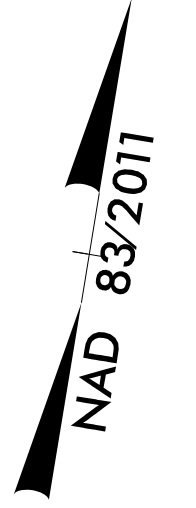


APPROVED: *Ayman Alqudwah*
Professional Engineer
 No. 028387
 State of North Carolina
 DATE: 10/16/2019



DOCUMENT NOT CONSIDERED FINAL
 UNLESS ALL SIGNATURES COMPLETED

10/16/19 - ADDED SIGNS FOR RIGHT TURN
 LANE AT -L- STA. 224+35+/-/
 D. BEARD



MATCHLINE -L- STA. 216+00.00 SEE SHEET 11

MATCHLINE -L- STA. 242+00.00 SEE SHEET 13

PROJECT NOTES

1. DISPOSAL OF SUPPORT, U-CHANNEL
2. DISPOSAL OF SIGN SYSTEM, WOOD
3. SIGN ERECTION, RELOCATE SIGN TYPE E
4. DISPOSAL OF FLASHING, SEE SIGNAL PLAN

PROPOSED & EXISTING SIGNS
 -L- STA. 216+00 TO STA. 242+00
 (NC 42)

10/16/19
 P:\IP\Projects-R\R3825B\Traffic\Signing\CADD\Signing_Layout_Plans\R-3825B-SIGN-12-REVISED.dgn
 User: dbeard