

12/21/2020 REV. - ADJUST FORCE MAIN AND GRAVITY SEWER TO AVOID 66' DRAINAGE

RDY-21

PROJECT REFERENCE NO. R-3825B SHEET NO. UC-210A

DESIGNED BY:

DRAWN BY:

CHECKED BY:

APPROVED BY:

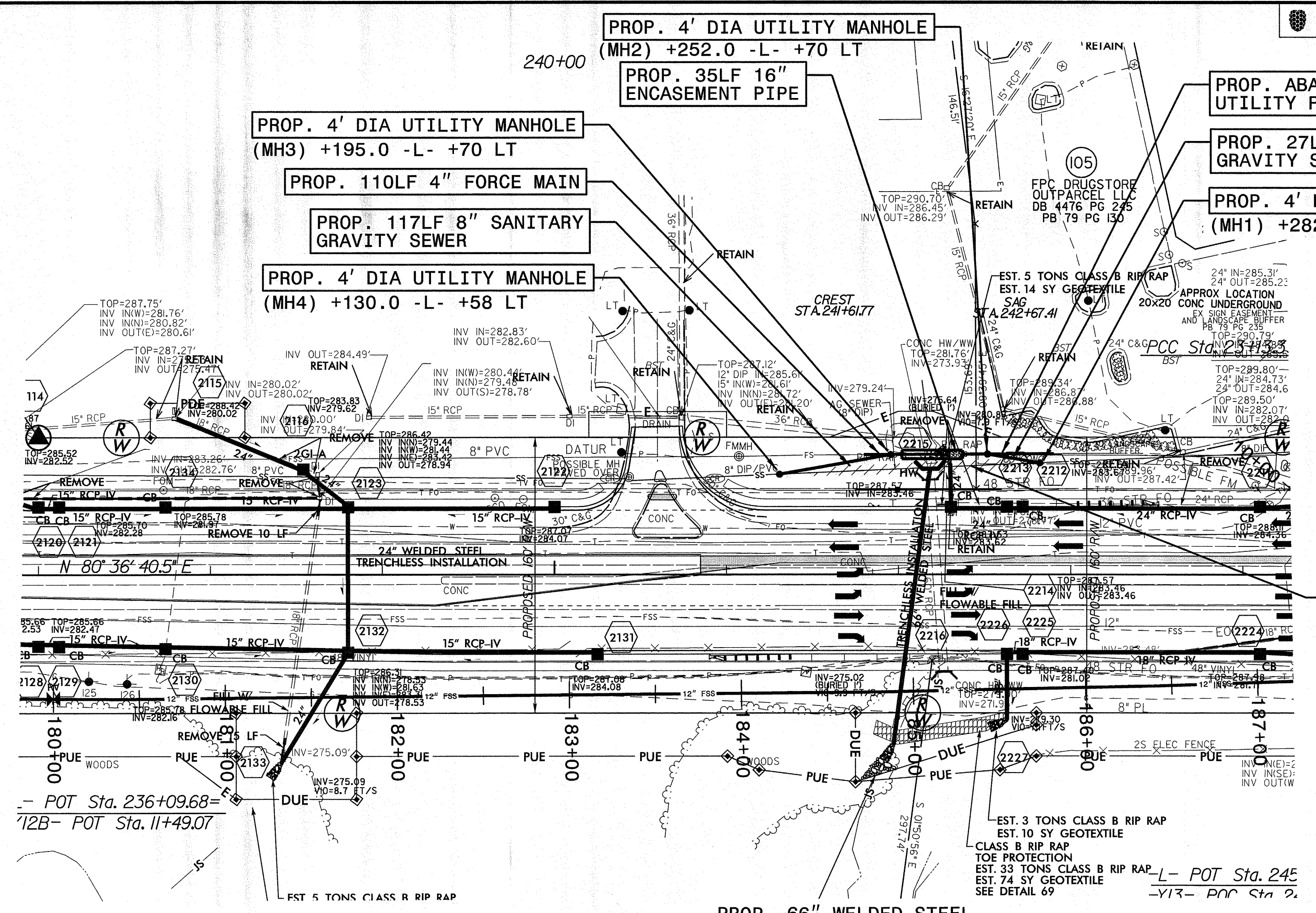
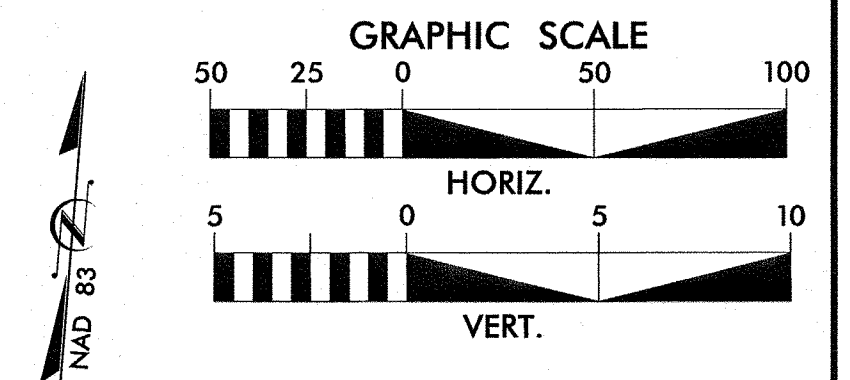
REVISED:

NORTH CAROLINA DEPARTMENT OF TRANSPORTATION

UTILITIES ENGINEERING SEC. PHONE: (919) 707-6690 FAX: (919) 250-4151

UTILITY CONSTRUCTION PLANS ONLY

### UTILITY CONSTRUCTION

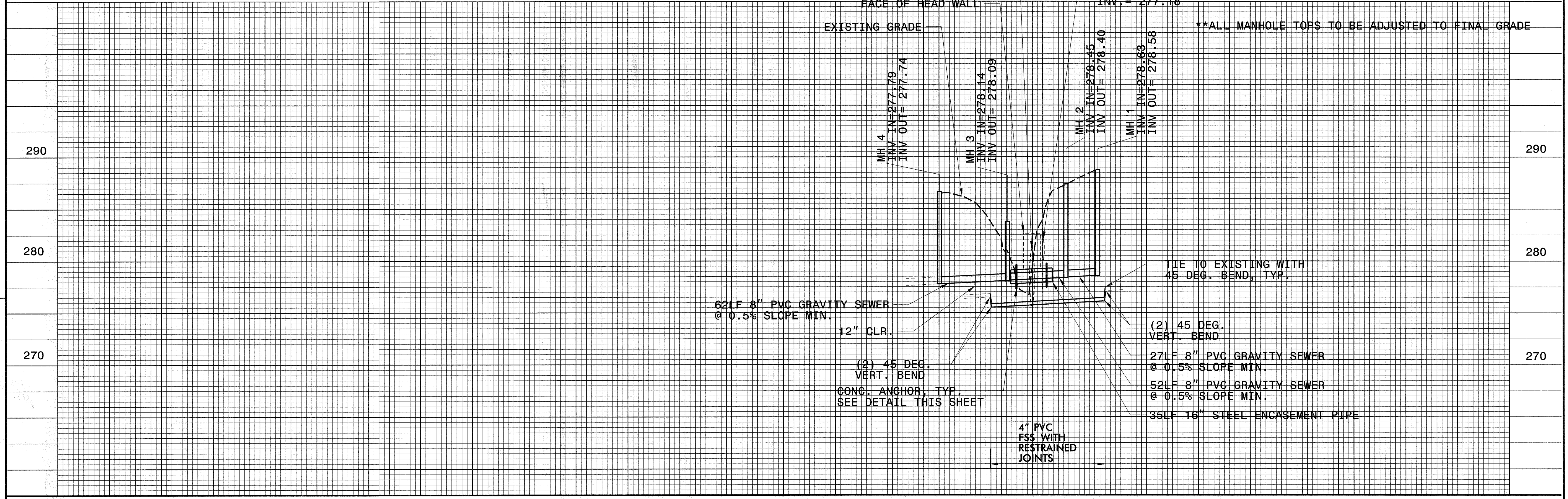


PROP. ABANDON 155LF 8\"/>

**NOTE:**  
 THE ESTIMATED QUANTITY OF DUCTILE IRON SEWER PIPE FITTINGS ON THIS PLAN SHEET IS 500 POUNDS. THE ACTUAL QUANTITY AND TYPE OF FITTINGS WILL VARY BASED ON FIELD CONDITIONS.

PROP. 66\"/>
 INV. = 275.64  
 FACE OF HEAD WALL  
 PROP. 24\"/>
 INV. = 277.18

\*\*ALL MANHOLE TOPS TO BE ADJUSTED TO FINAL GRADE



62LF 8\"/>
 @ 0.5% SLOPE MIN.

12\"/>
 CLR.

(2) 45 DEG. VERT. BEND

CONC. ANCHOR, TYP. SEE DETAIL THIS SHEET

4\"/>
 FSS WITH RESTRAINED JOINTS

TIE TO EXISTING WITH 45 DEG. BEND, TYP.

(2) 45 DEG. VERT. BEND

27LF 8\"/>
 @ 0.5% SLOPE MIN.

52LF 8\"/>
 @ 0.5% SLOPE MIN.

35LF 16\"/>
 STEEL ENCASEMENT PIPE