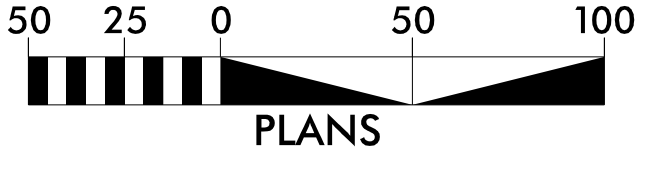


Place Matting for Erosion Control on all Cut and Fill Slopes as Work Allows.
 -Y13- Sta. 14+83 to Sta. 35+70 RT & LT



INSTALL INLET PROTECTION IN ACCORDANCE WITH ENGINEER'S RECOMMENDATIONS

Place Matting for Erosion Control in Temporary Ditches and Diversions.

44' x 22' x 3' 1.5 inch Skimmer with 0.875 inch Orifice Diameter 4 ft. weir ID 23.1

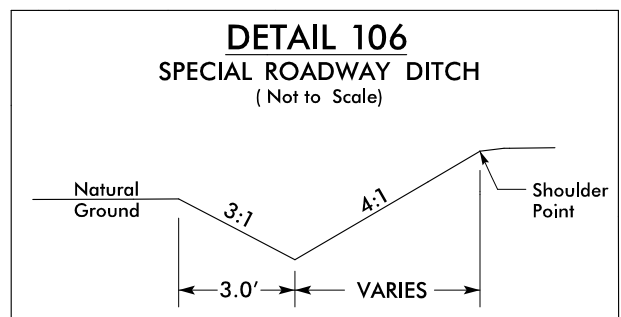
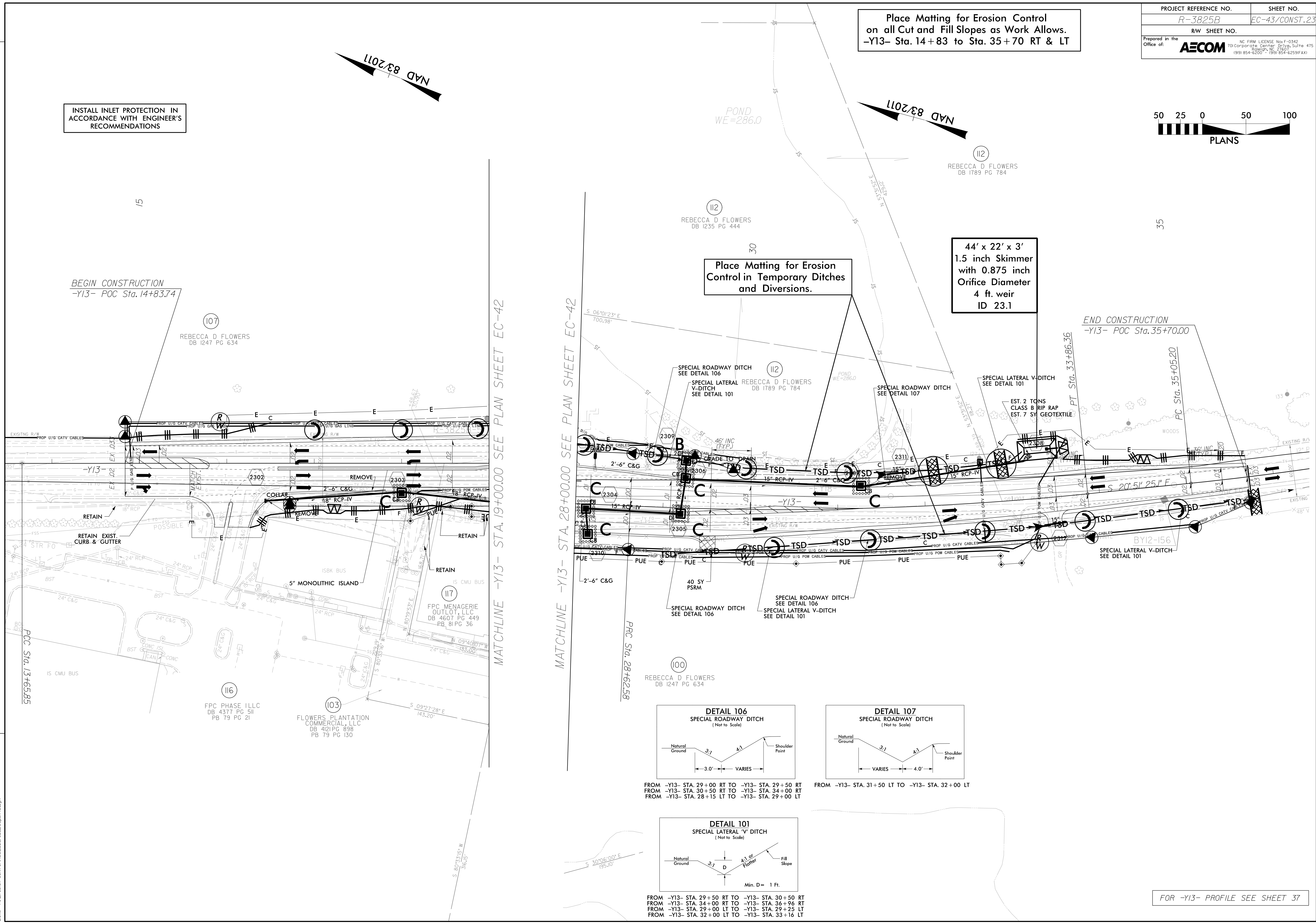
BEGIN CONSTRUCTION -Y13- POC Sta. 14+83.74

END CONSTRUCTION -Y13- POC Sta. 35+70.00

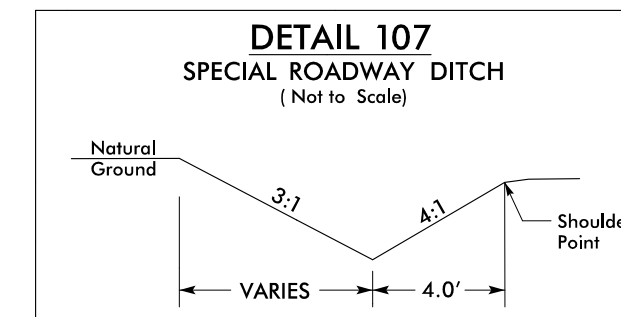
REVISIONS

MATCHLINE -Y13- STA. 19+00.00 SEE PLAN SHEET EC-42

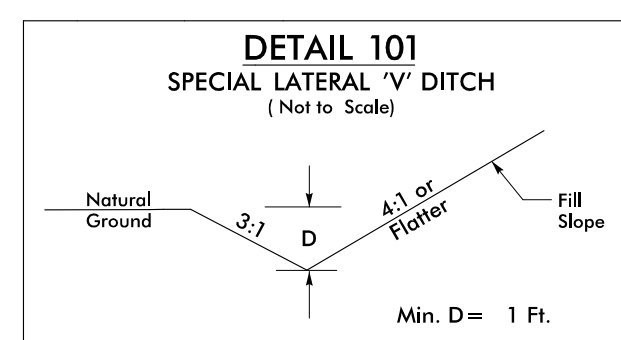
MATCHLINE -Y13- STA. 28+00.00 SEE PLAN SHEET EC-42



FROM -Y13- STA. 29+00 RT TO -Y13- STA. 29+50 RT
 FROM -Y13- STA. 30+50 RT TO -Y13- STA. 34+00 RT
 FROM -Y13- STA. 28+15 LT TO -Y13- STA. 29+00 LT



FROM -Y13- STA. 31+50 LT TO -Y13- STA. 32+00 LT



FROM -Y13- STA. 29+50 RT TO -Y13- STA. 30+50 RT
 FROM -Y13- STA. 34+00 RT TO -Y13- STA. 36+96 RT
 FROM -Y13- STA. 29+00 LT TO -Y13- STA. 29+25 LT
 FROM -Y13- STA. 32+00 LT TO -Y13- STA. 33+16 LT

FOR -Y13- PROFILE SEE SHEET 37

DATE/TIME: 9/3/2016 9:35:54 AM
 2016: P:\Erosion Control\03825B_rwl_EC_23.ec_23.plt\3.dgn