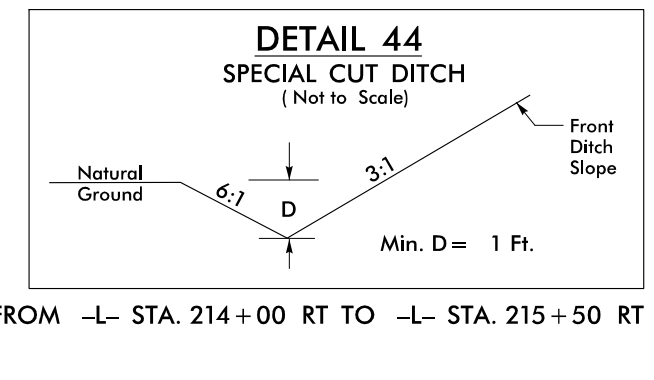
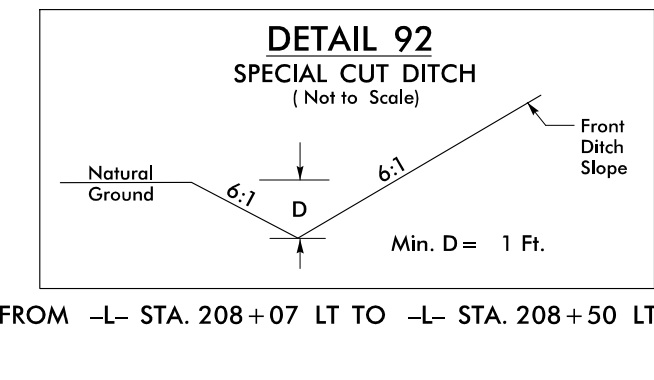
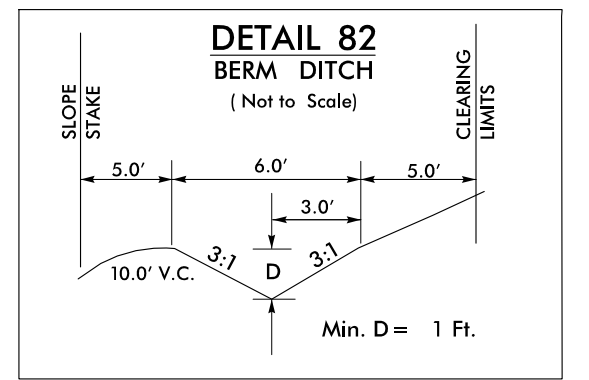
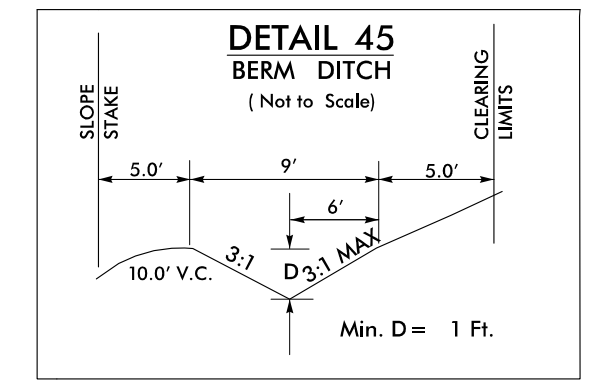
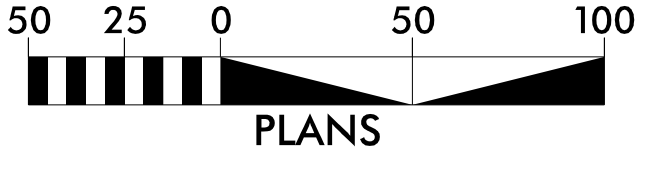


NAD 83/2011



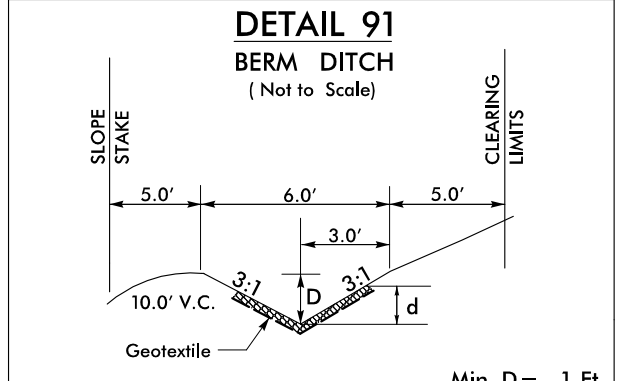
FROM -L- STA. 210+70 RT TO -L- STA. 212+50 RT

FROM -L- STA. 206+50 RT TO -L- STA. 208+22 RT

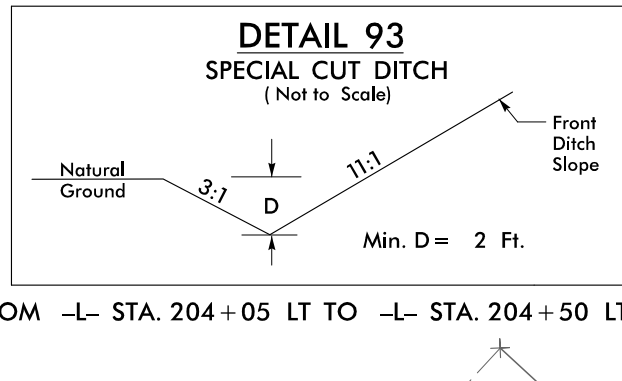
FROM -L- STA. 208+07 LT TO -L- STA. 208+50 LT

FROM -L- STA. 214+00 RT TO -L- STA. 215+50 RT

**Place Matting for Erosion Control
on all Cut and Fill Slopes as Work Allows.
-L- Sta. 203+00 to Sta. 216+00 RT & LT**



FROM -L- STA. 208+22 RT TO -L- STA. 210+70 RT

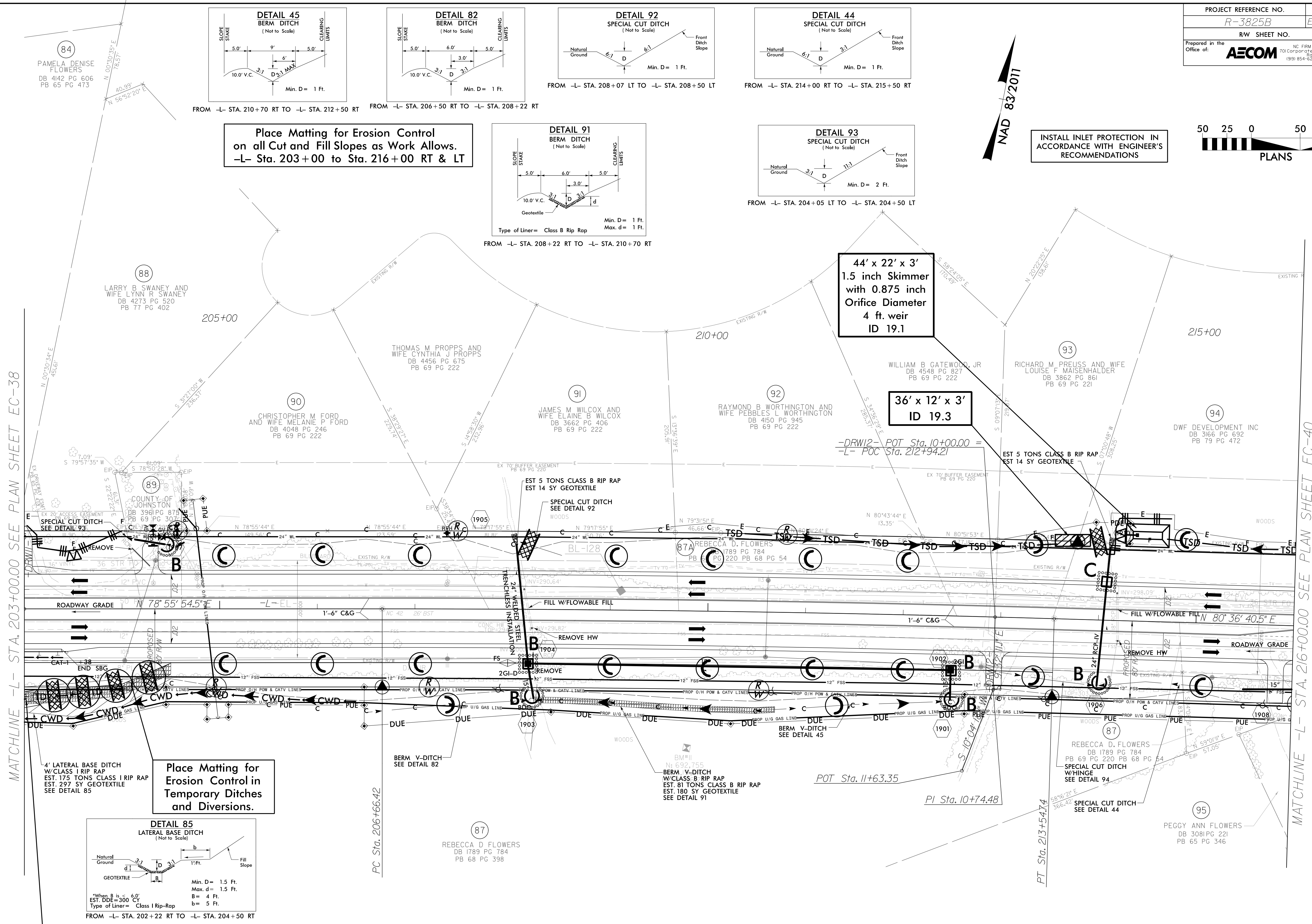


FROM -L- STA. 204+05 LT TO -L- STA. 204+50 LT

INSTALL INLET PROTECTION IN ACCORDANCE WITH ENGINEER'S RECOMMENDATIONS

MATCHLINE -L- STA. 203+00.00 SEE PLAN SHEET EC-38

MATCHLINE -L- STA. 216+00.00 SEE PLAN SHEET EC-40



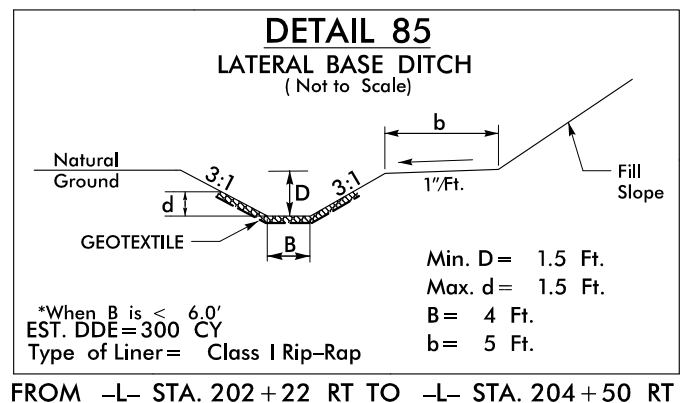
**44' x 22' x 3'
1.5 inch Skimmer
with 0.875 inch
Orifice Diameter
4 ft. weir
ID 19.1**

**36' x 12' x 3'
ID 19.3**

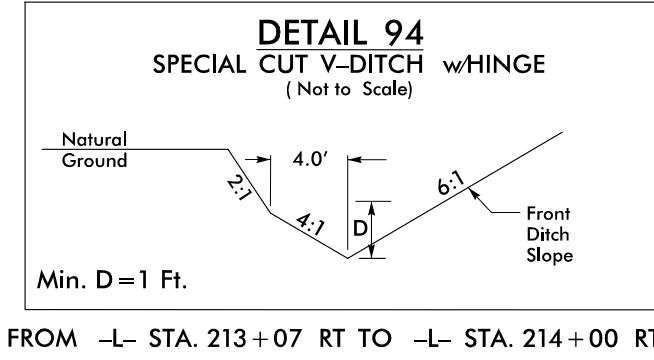
**Place Matting for Erosion Control in
Temporary Ditches
and Diversions.**

**Modified Silt Basin
Type 'B'
32' x 16' x 3'
4 ft. weir
(See Tiered Skimmer
Basin Detail)
ID 18.4**

**Install Sod Strip in Raised Median
and Behind Guard Rail**



FROM -L- STA. 202+22 RT TO -L- STA. 204+50 RT



FROM -L- STA. 213+07 RT TO -L- STA. 214+00 RT

FOR -L- PROFILE SEE SHEET 31

REVISIONS

DATE/TIME: 9/3/16 AM
DRAWN: PVE/Revision Control/03/25/2016/EC-39/19.dgn