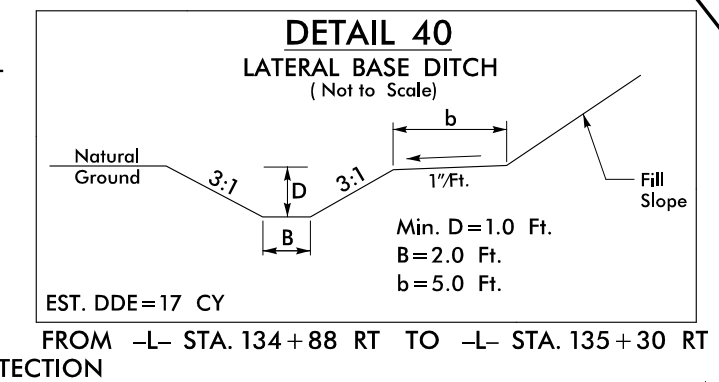
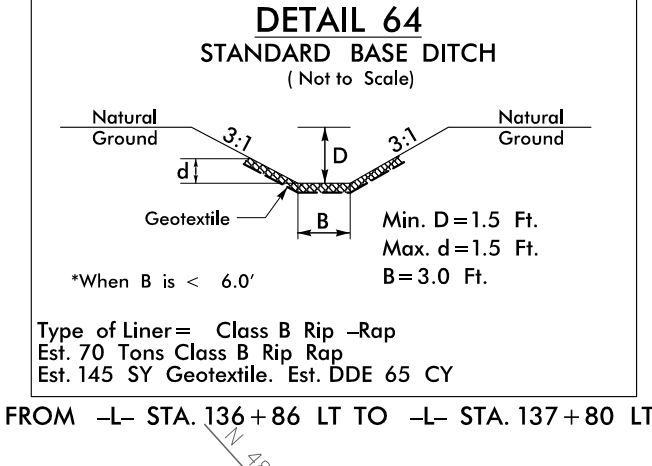
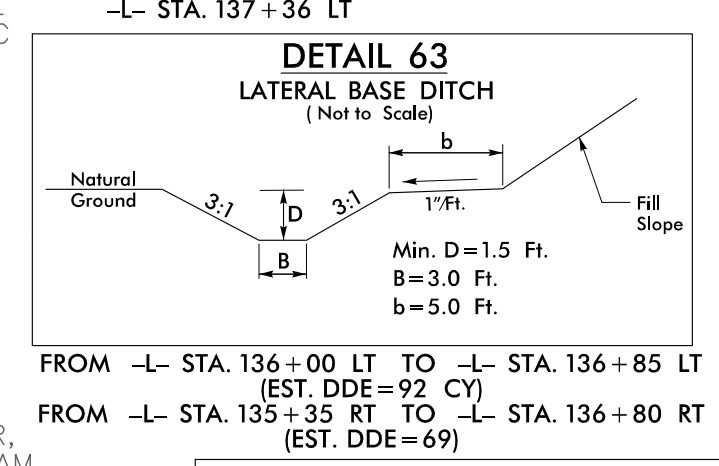
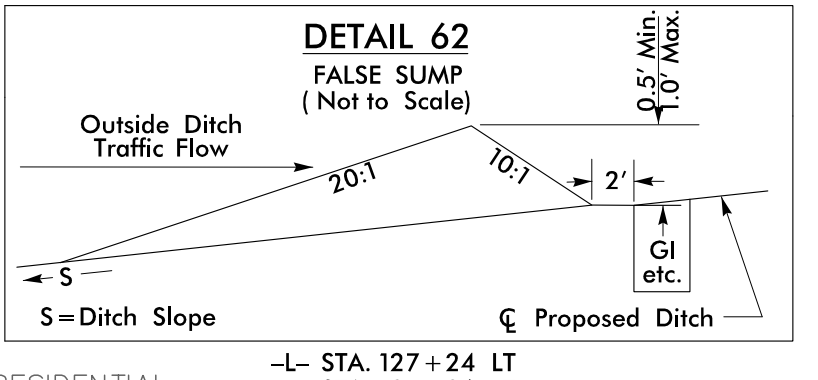
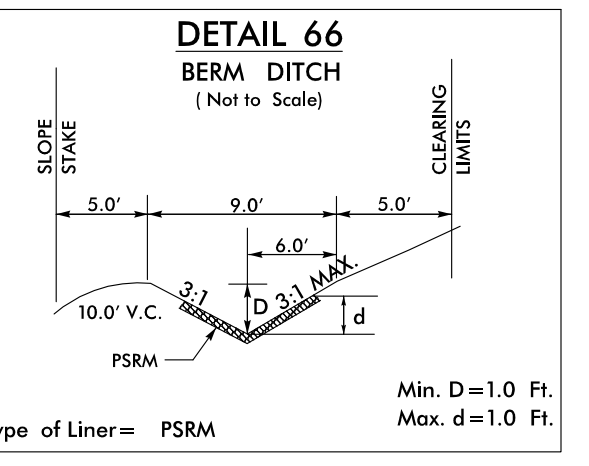
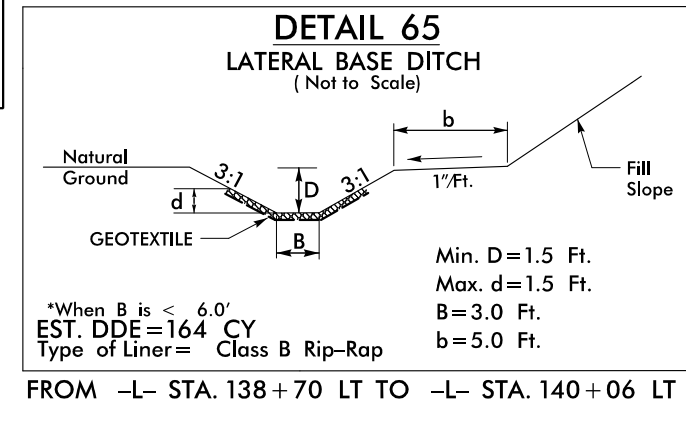
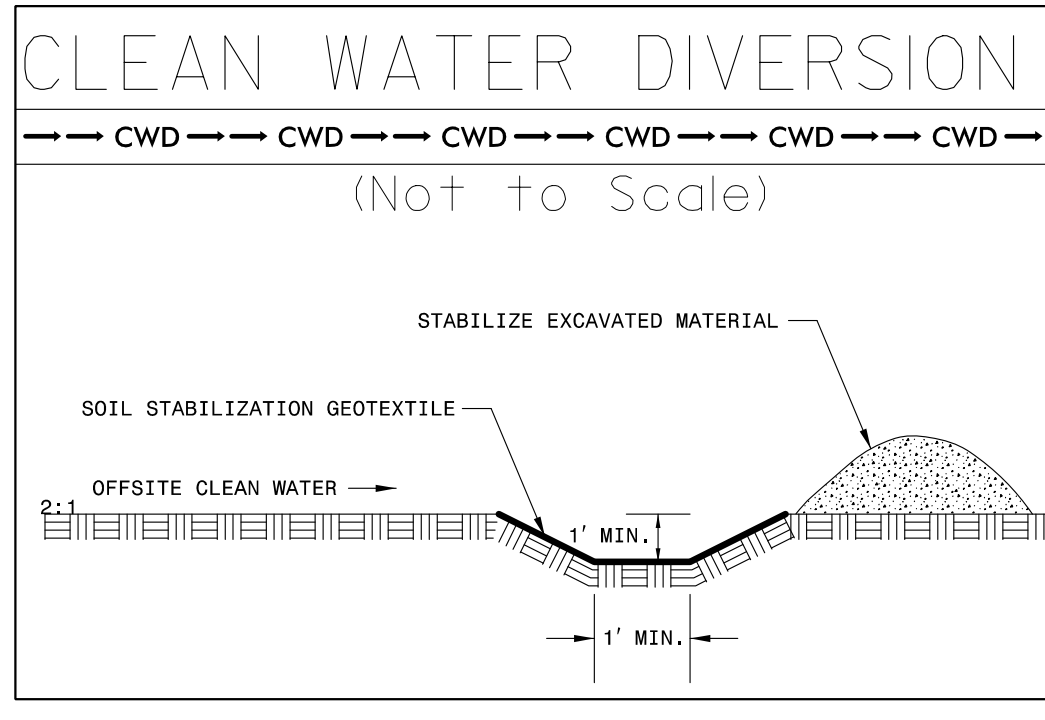


NAD 83/2011

INSTALL INLET PROTECTION IN ACCORDANCE WITH ENGINEER'S RECOMMENDATIONS



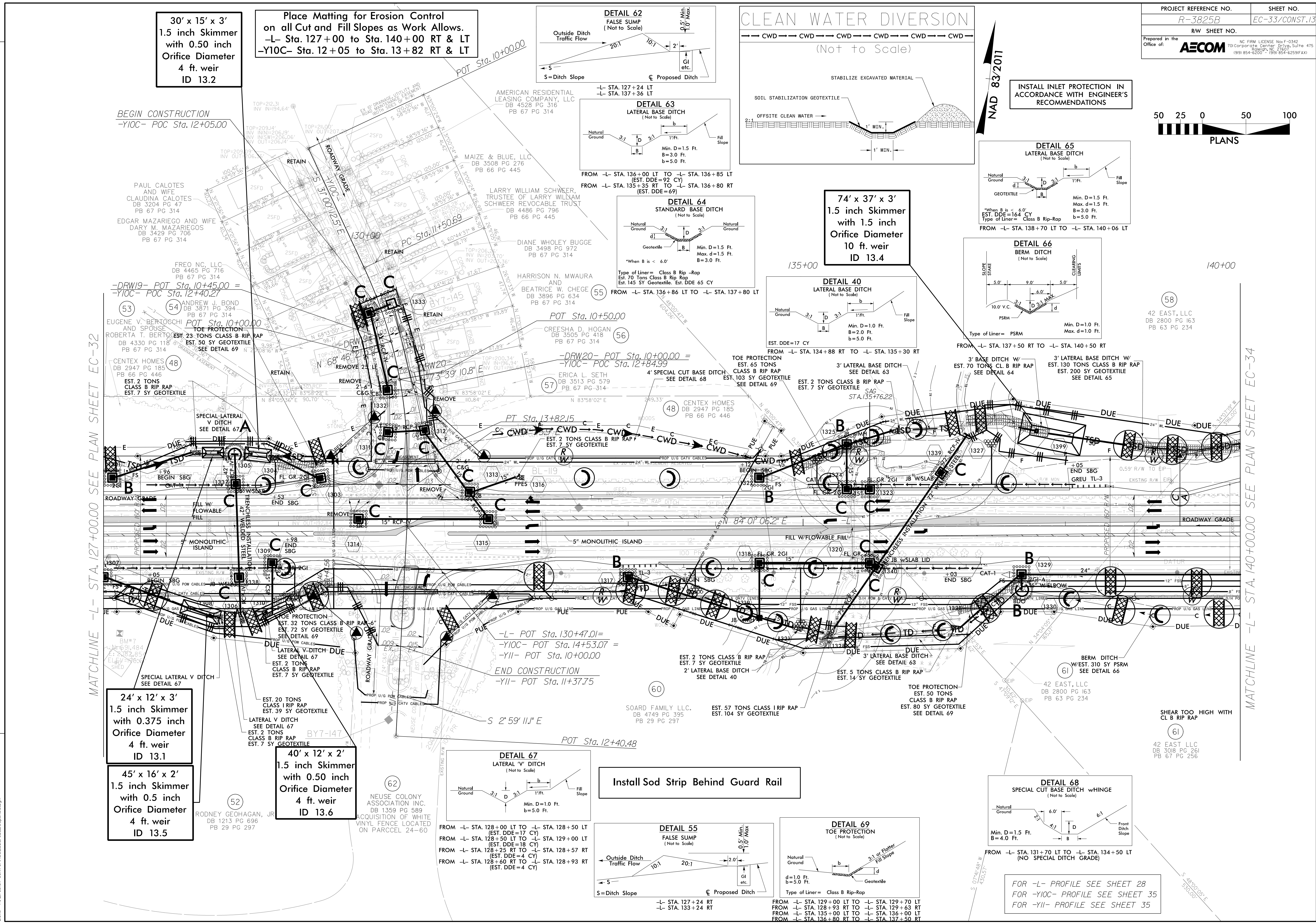
74' x 37' x 3'
1.5 inch Skimmer
with 1.5 inch
Orifice Diameter
10 ft. weir
ID 13.4

30' x 15' x 3'
1.5 inch Skimmer
with 0.50 inch
Orifice Diameter
4 ft. weir
ID 13.2

Place Matting for Erosion Control
on all Cut and Fill Slopes as Work Allows.
-L- Sta. 127+00 to Sta. 140+00 RT & LT
-Y10C- Sta. 12+05 to Sta. 13+82 RT & LT

MATCHLINE -L- STA. 127+00.00 SEE PLAN SHEET EC-32

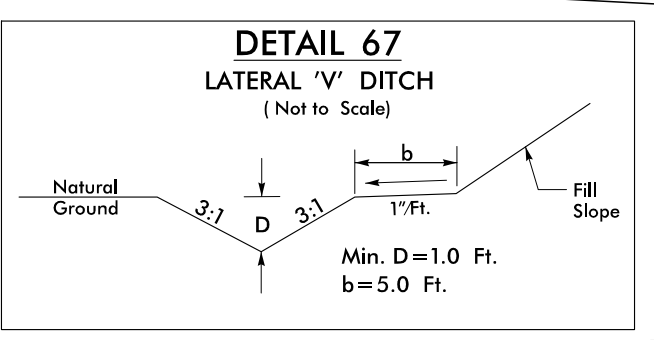
MATCHLINE -L- STA. 140+00.00 SEE PLAN SHEET EC-34



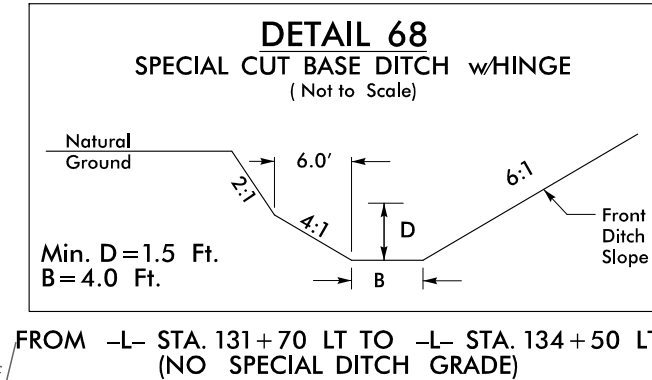
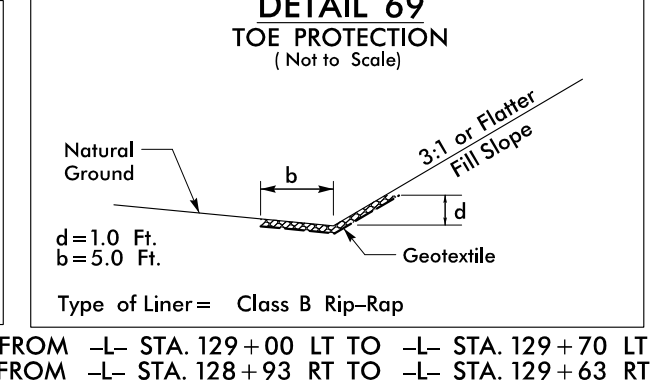
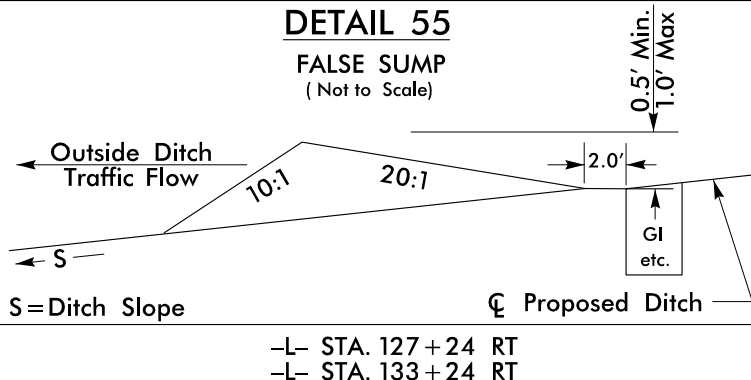
24' x 12' x 3'
1.5 inch Skimmer
with 0.375 inch
Orifice Diameter
4 ft. weir
ID 13.1

45' x 16' x 2'
1.5 inch Skimmer
with 0.5 inch
Orifice Diameter
4 ft. weir
ID 13.5

40' x 12' x 2'
1.5 inch Skimmer
with 0.50 inch
Orifice Diameter
4 ft. weir
ID 13.6



Install Sod Strip Behind Guard Rail



FOR -L- PROFILE SEE SHEET 28
FOR -Y10C- PROFILE SEE SHEET 35
FOR -Y11- PROFILE SEE SHEET 35

REVISIONS

DATE/TIME: 05/31/17 AM
2016: P:\E\erobon\Corridor\3825B\raw_EC_33.ec33.dgn