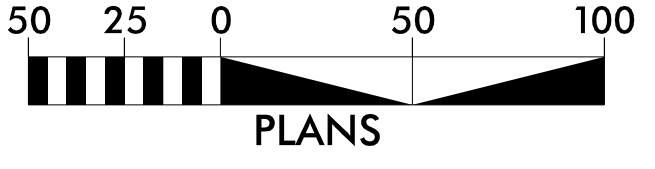
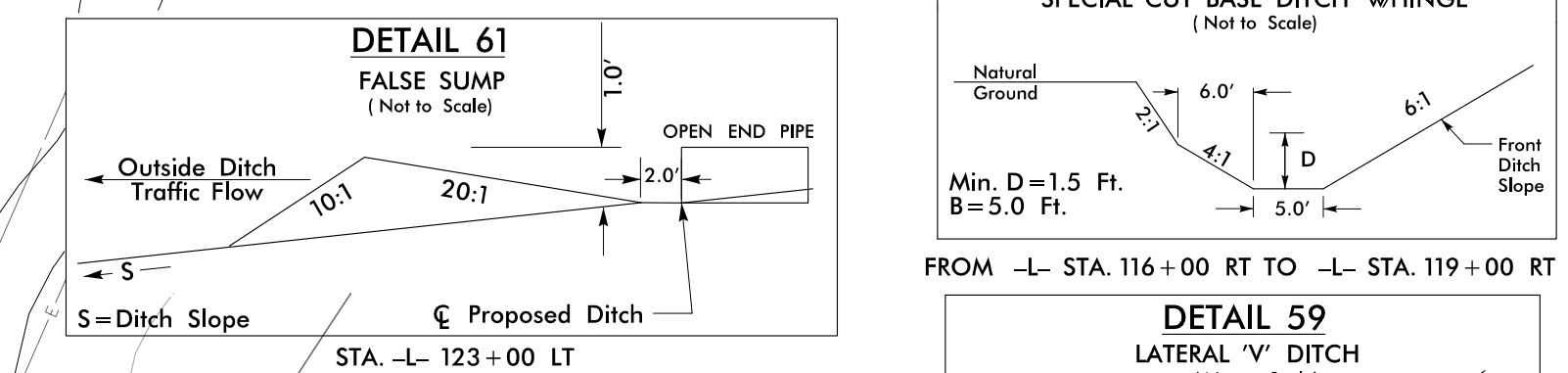
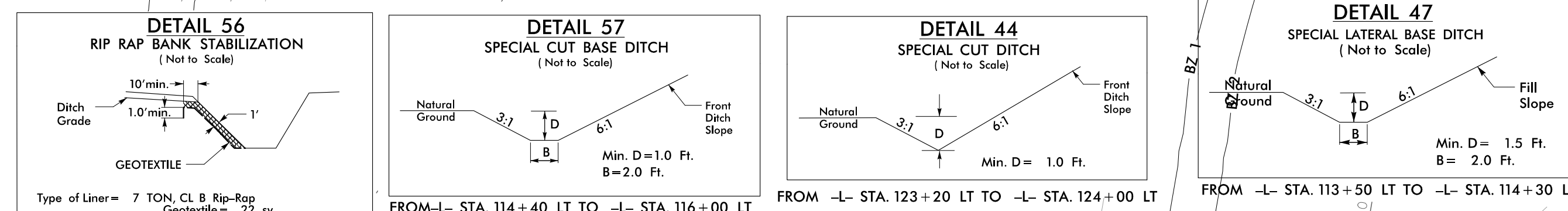


Place Matting for Erosion Control on all Cut and Fill Slopes as Work Along.
 -L- Sta. 114+00 to Sta. 127+00 RT & LT
 -YIOB- Sta. 11+70 to Sta. 12+50 RT & LT

NAD 83/2011



INSTALL INLET PROTECTION IN ACCORDANCE WITH ENGINEER'S RECOMMENDATIONS

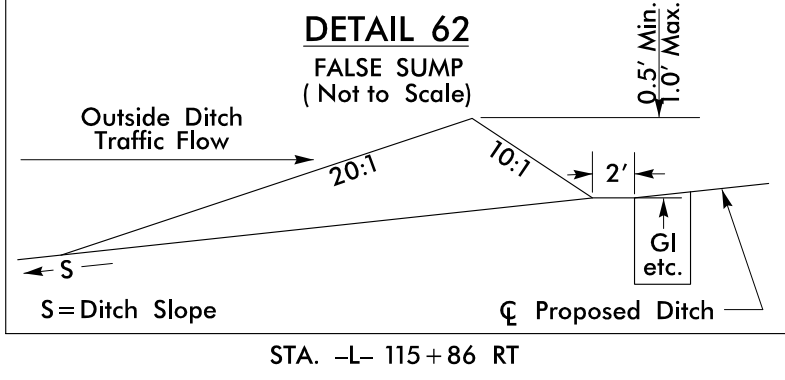
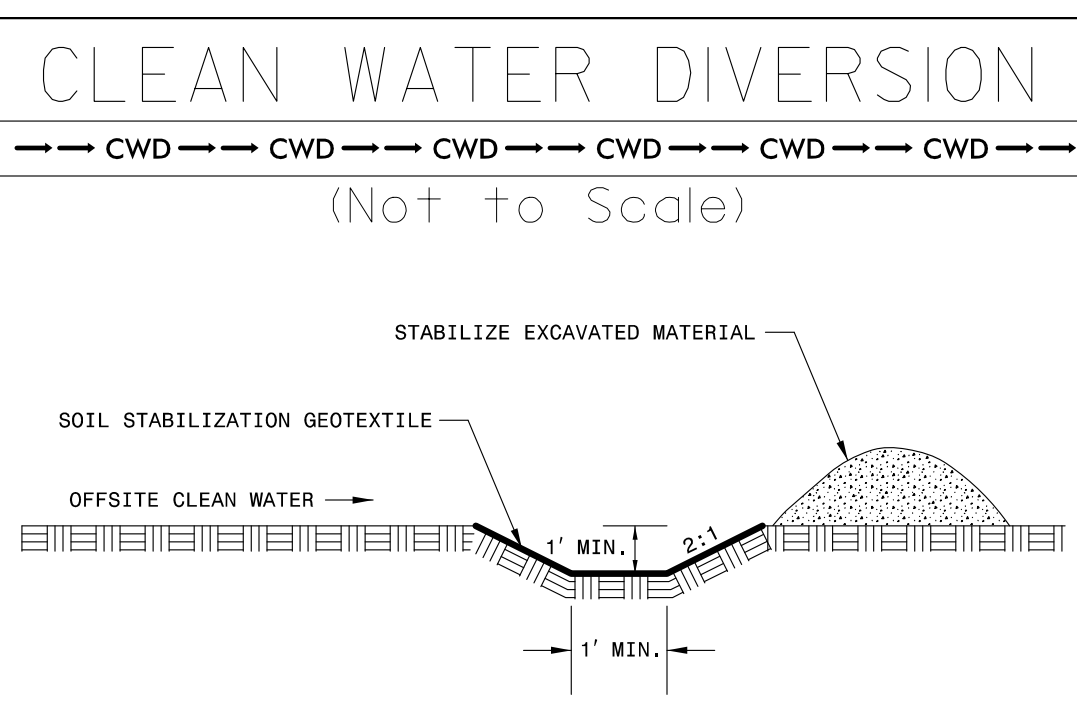


50' x 25' x 3' 1.5 inch Skimmer with 1.0 inch Orifice Diameter 4 ft. weir ID 12.1

Place Matting for Erosion Control in Temporary Ditches and Diversions.

45' x 16' x 3 ID 12.3

Place Matting for Erosion Control in Temporary Ditches and Diversions.



Install Sod Strip in Raised Median and Behind Guard Rail

NEUSE COLONY ASSOCIATION INC. DB 1359 PG 589 ACQUISITION OF WHITE NYL FENCE LOCATED IN PARCEL 24-60

FOR -L- PROFILE SEE SHEET 28
 FOR -YIOB- PROFILE SEE SHEET 35

MATCHLINE -L- STA. 114+00.00 SEE PLAN SHEET EC-31

MATCHLINE -L- STA. 127+00.00 SEE PLAN SHEET EC-33

REVISIONS

DATE/TIME: 05/23/16 AM
 2016: P:\Erosion Control\3825B_row_EC_32.dwg