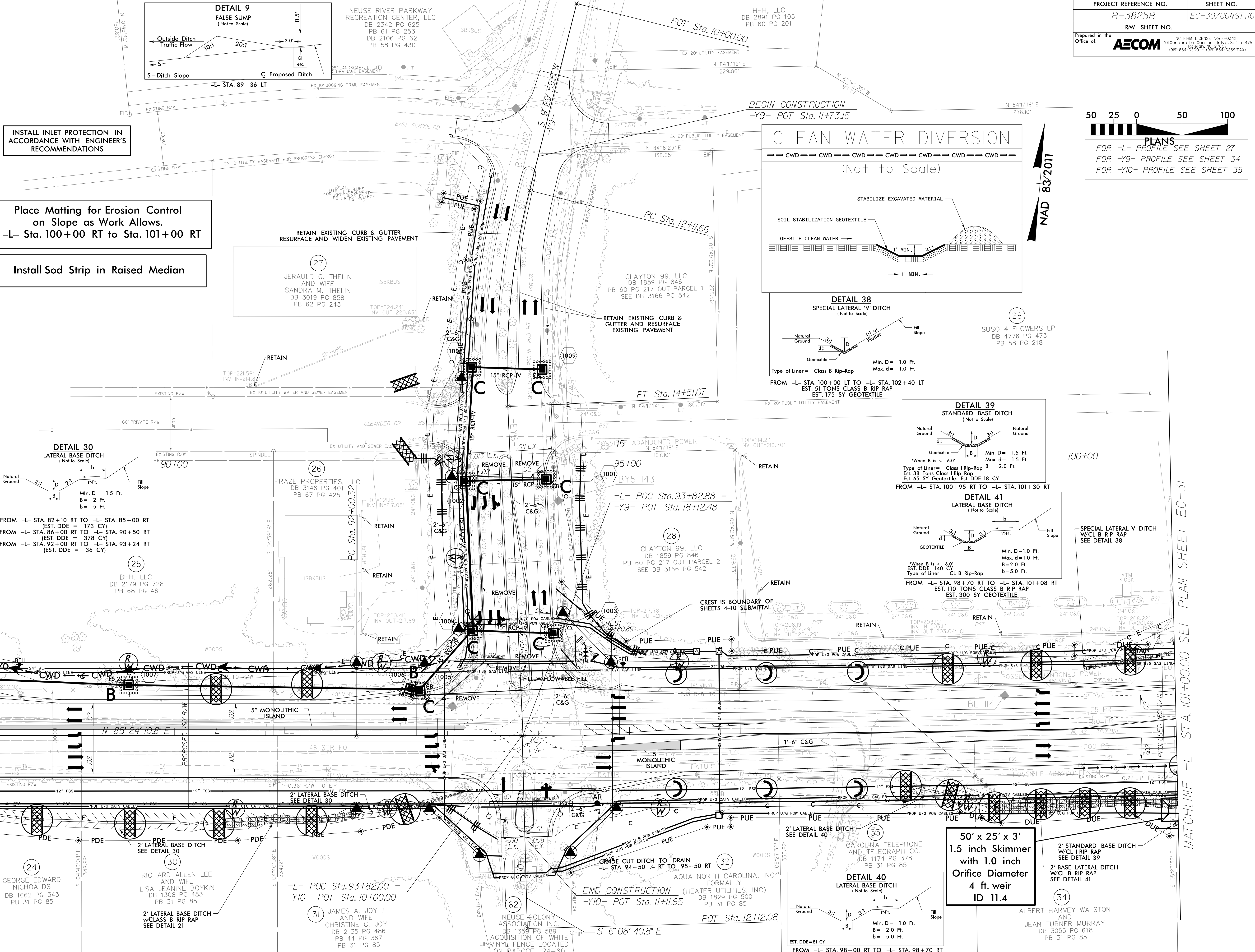




**PLANS**  
 FOR -L- PROFILE SEE SHEET 27  
 FOR -Y9- PROFILE SEE SHEET 34  
 FOR -Y10- PROFILE SEE SHEET 35



INSTALL INLET PROTECTION IN ACCORDANCE WITH ENGINEER'S RECOMMENDATIONS

Place Matting for Erosion Control on Slope as Work Allows.  
 -L- Sta. 100+00 RT to Sta. 101+00 RT

Install Sod Strip in Raised Median

MATCHLINE -L- STA. 88+00.00 SEE PLAN SHEET EC-29

MATCHLINE -L- STA. 101+00.00 SEE PLAN SHEET EC-31

REVISIONS

DATE/TIME: 9/23/10 AM  
 2:06: PM/Ernie.Corrigan/3825B\_rwl\_EC\_29/30.dgn

24 GEORGE EDWARD NICHOLDS  
 DB 1662 PG 343  
 PB 31 PG 85

30 RICHARD ALLEN LEE AND WIFE  
 LISA JEANINE BOYKIN  
 DB 1308 PG 483  
 PB 31 PG 85

-L- POC Sta. 93+82.00 =  
 -Y10- POT Sta. 10+00.00

31 JAMES A. JOY AND WIFE  
 CHRISTINE C. JOY  
 DB 2135 PG 486  
 PB 31 PG 85

END CONSTRUCTION  
 -Y10- POT Sta. 11+165

POT Sta. 12+12.08

33 CAROLINA TELEPHONE AND TELEGRAPH CO.  
 DB 1174 PG 378  
 PB 31 PG 85

34 ALBERT HARVEY WALSTON AND  
 JEAN TURNER MURRAY  
 DB 3055 PG 618  
 PB 31 PG 85

NEUSE RIVER PARKWAY RECREATION CENTER, LLC  
 DB 2342 PG 625  
 PB 61 PG 253  
 DB 2106 PG 62  
 PB 58 PG 430

H.H.H., LLC  
 DB 2891 PG 105  
 PB 60 PG 201

CLAYTON 99, LLC  
 DB 1859 PG 846  
 PB 60 PG 217 OUT PARCEL 1  
 SEE DB 3166 PG 542

CLAYTON 99, LLC  
 DB 1859 PG 846  
 PB 60 PG 217 OUT PARCEL 2  
 SEE DB 3166 PG 542

PRAZE PROPERTIES, LLC  
 DB 3146 PG 401  
 PB 67 PG 425

B.H.H., LLC  
 DB 2179 PG 728  
 PB 68 PG 46

NEUSE COLONY ASSOCIATION, INC.  
 DB 1358 PG 589  
 ACQUISITION OF WHITE  
 EIP/VINYL FENCE LOCATED  
 ON PARCEL 24-60

29 SUSO 4 FLOWERS LP  
 DB 4776 PG 473  
 PB 58 PG 218

27 JERAULD G. THELIN AND WIFE  
 SANDRA M. THELIN  
 DB 3019 PG 858  
 PB 62 PG 243

28 CLAYTON 99, LLC  
 DB 1859 PG 846  
 PB 60 PG 217 OUT PARCEL 2  
 SEE DB 3166 PG 542

32 AQUA NORTH CAROLINA, INC.  
 FORMALLY  
 HEATER UTILITIES, INC.  
 DB 1829 PG 300  
 PB 31 PG 85