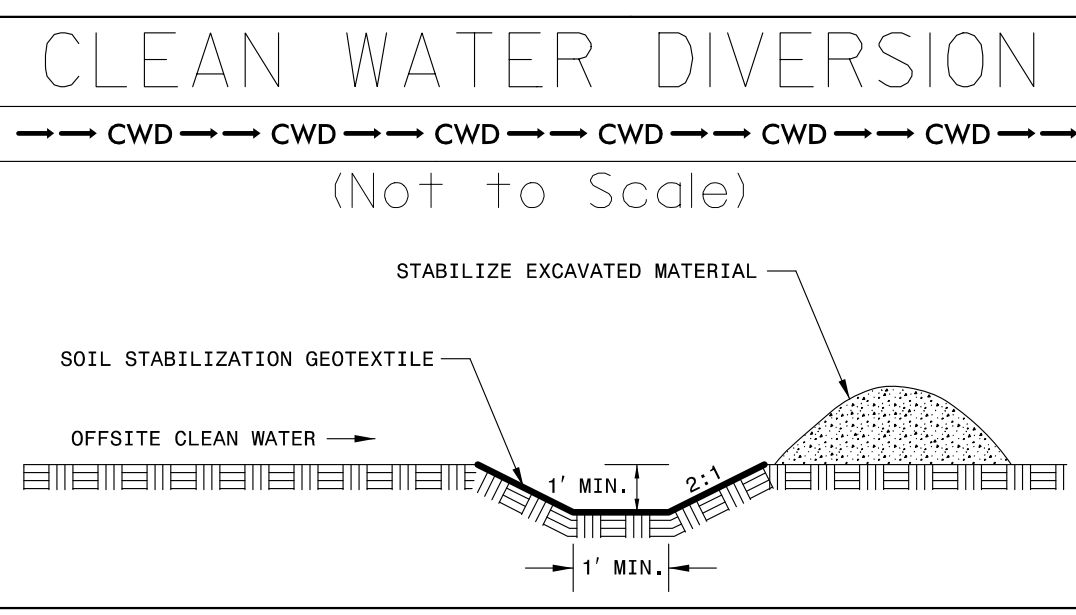


INSTALL INLET PROTECTION IN ACCORDANCE WITH ENGINEER'S RECOMMENDATIONS



Construct Proposed Berm Ditch according to Detail 45 from -L- Sta. 210+70 RT to -L- Sta. 212+50 RT During the Clearing and Grubbing Phase

Construct Proposed Berm Ditch according to Detail 91 from -L- Sta. 208+22 RT to -L- Sta. 210+70 RT During the Clearing and Grubbing Phase

Construct Proposed Berm Ditch according to Detail 82 from -L- Sta. 206+50 RT to -L- Sta. 208+22 RT During the Clearing and Grubbing Phase

NOTE: PERIMETER EROSION CONTROL MEASURES SHALL BE INSTALLED DURING CLEARING AND GRUBBING PHASE.

44' x 22' x 3'  
1.5 inch Skimmer with 0.875 inch Orifice Diameter  
4 ft. weir  
ID 19.1

36' x 12' x 3'  
ID 19.3

44' x 16' x 3'  
ID 19.2

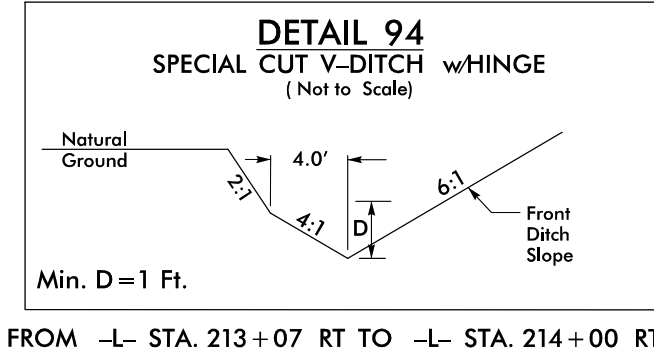
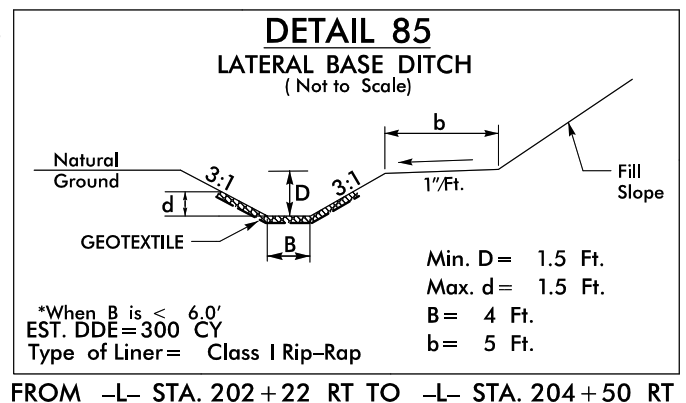
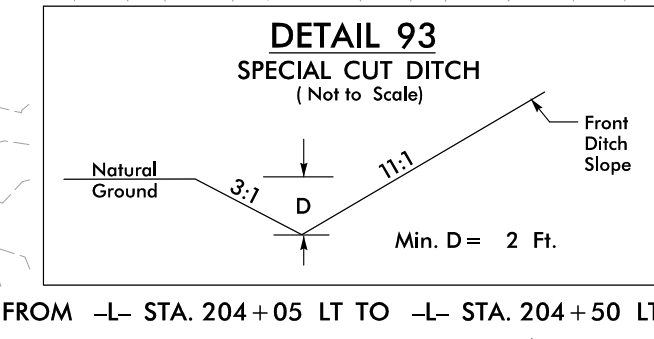
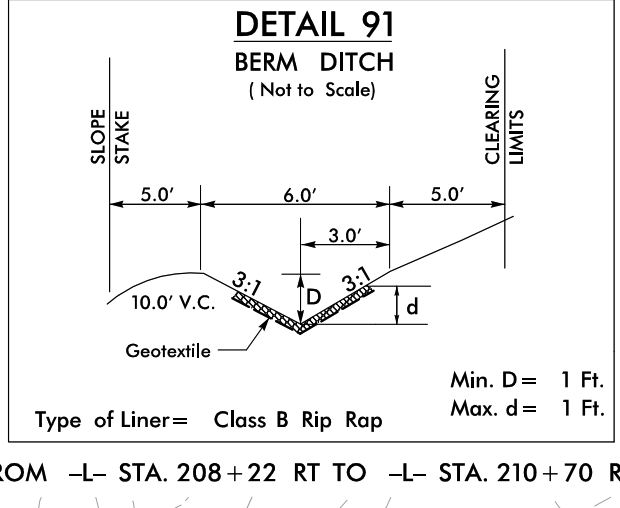
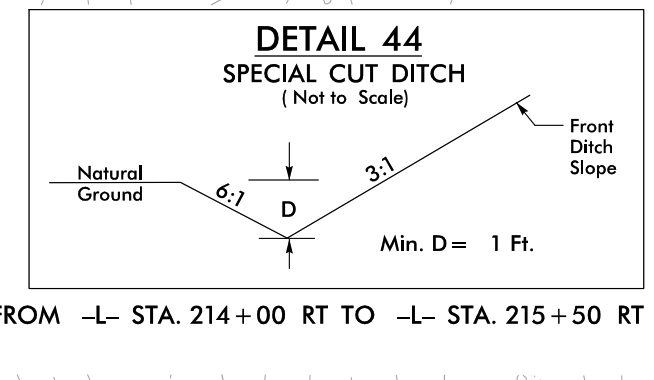
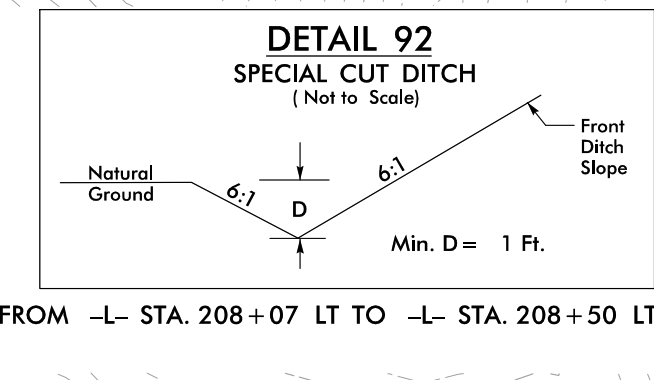
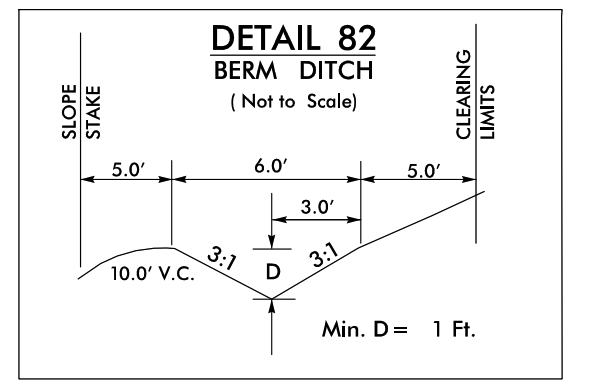
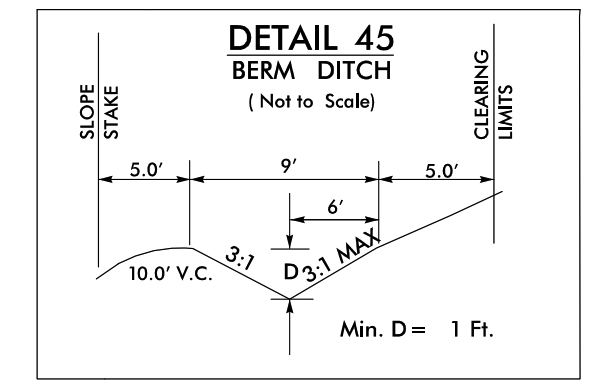
Place Matting for Erosion Control in Temporary Ditches and Diversions.

Modified Silt Basin Type 'B'  
32' x 16' x 3'  
4 ft. weir  
(See Tiered Skimmer Basin Detail)  
ID 18.4

CLEARING AND GRUBBING EROSION CONTROL FOR CONSTRUCTION SHEET 19

NOTE: PLACE TEMPORARY ROCK SEDIMENT DAMS TYPE - B AND TEMPORARY ROCK SILT CHECKS TYPE - A AT DRAINAGE OUTLETS.

FOR -L- PROFILE SEE SHEET 31



REVISIONS

MATCHLINE -L- STA. 203+00.00 SEE PLAN SHEET EC-18

MATCHLINE -L- STA. 216+00.00 SEE PLAN SHEET EC-20

DATE/TIME: 9/24/14 AM  
2016: REV: Erosion Control/3825B\_rwl\_EC\_19/19.dwg