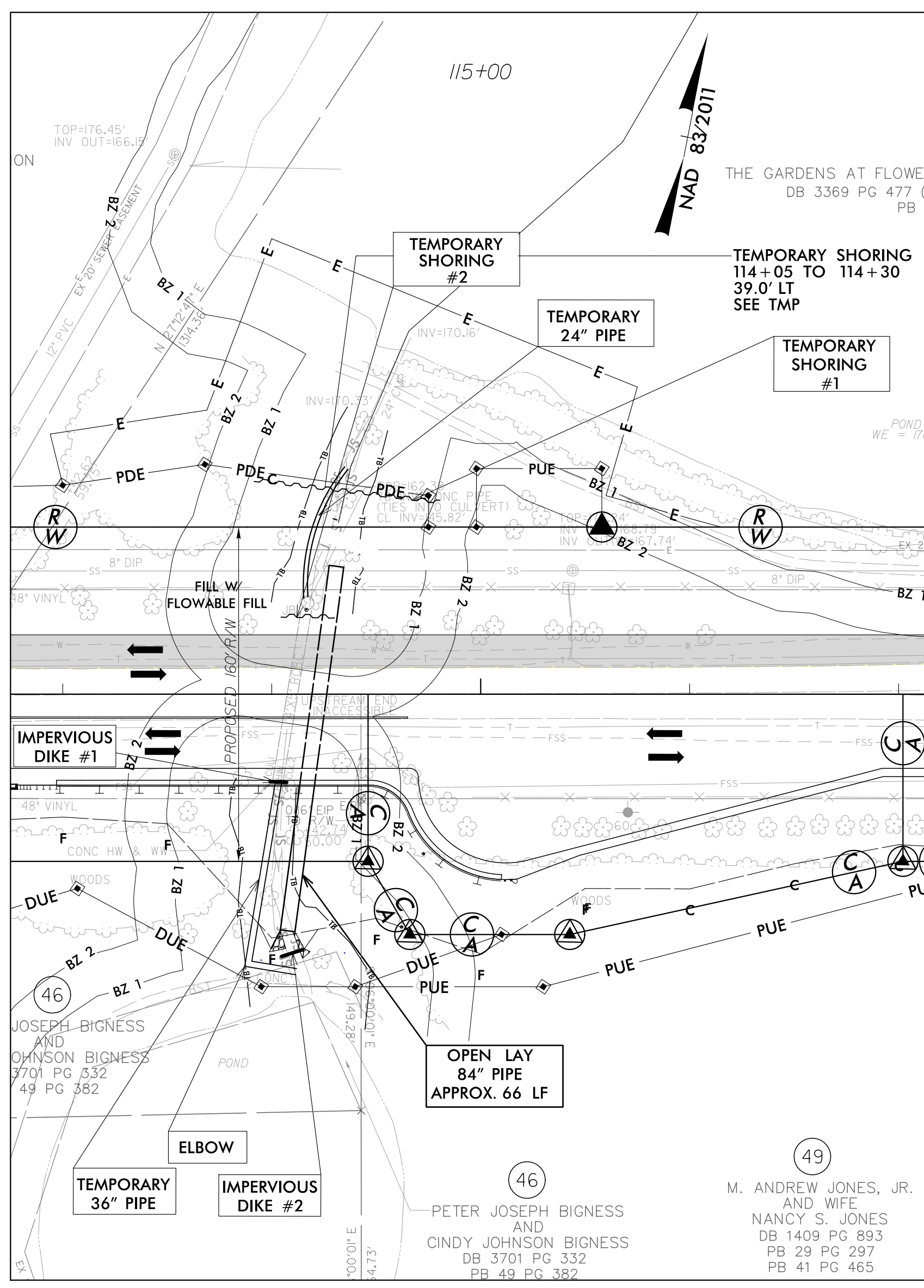


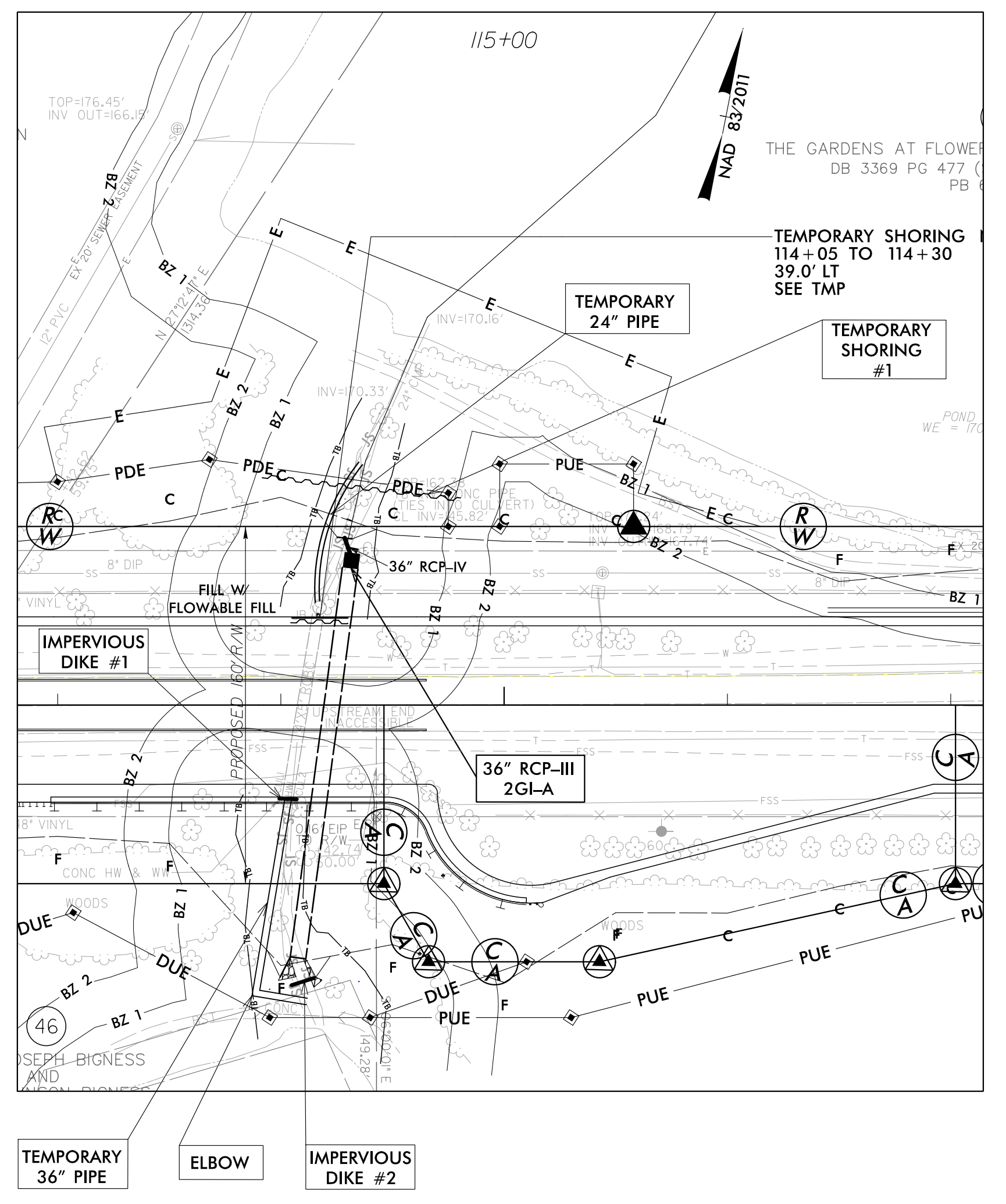
**CULVERT CONSTRUCTION SEQUENCE  
STA. 114+23 -L-  
PHASE I**

- KEEP TRAFFIC ON EXISTING PAVEMENT.
- MAINTAIN FLOW IN EXISTING RCBC.
- INSTALL SPECIAL STILLING BASIN(S).
- INSTALL 24" TEMPORARY PIPE TO CARRY STREAM FLOW FROM 24" CMP POND DISCHARGE TO EXISTING VERTICAL RISER AT UPSTREAM END OF EXISTING CULVERT.
- INSTALL TEMPORARY SHORING #1 (SEE STRUCTURE PLAN SHEET C2-1).
- INSTALL TEMPORARY 36" PIPE AND ELBOW, AND IMPERVIOUS DIKE #1 IN DOWNSTREAM END OF EXISTING CULVERT.
- WHILE MAINTAINING FLOW IN EXISTING RCBC, JACK AND BORE 84" PIPE (APPROXIMATELY 110 LF).
- INSTALL TEMPORARY SHORING #2 (SEE STRUCTURE PLAN SHEET C2-1) AND CONSTRUCT TEMPORARY WIDENING.
- INSTALL IMPERVIOUS DIKE #2.



**CULVERT CONSTRUCTION SEQUENCE (STA. 114+23 -L-)  
PHASE II**

- KEEP THE FOLLOWING DEVICES INSTALLED IN PHASE I IN OPERATION: SPECIAL STILLING BASIN(S), SHORINGS #1 AND #2, IMPERVIOUS DIKES #1, AND #2, AND THE TEMPORARY 24" AND 36" PIPES.
- SHIFT TRAFFIC ONTO TEMPORARY WIDENING.
- WHILE MAINTAINING FLOW IN EXISTING RCBC, (AND THE TEMPORARY PIPE INSTALLED IN PHASE I), OPEN LAY 84" PIPE (APPROXIMATELY 66 LF) AND CONSTRUCT ENDWALL AND OUTLET CHANNEL WORK.
- CONSTRUCT EASTBOUND LANES.



**CULVERT CONSTRUCTION SEQUENCE (STA. 114+23 -L-)  
PHASE III**

- KEEP THE FOLLOWING DEVICES INSTALLED IN PHASE I IN OPERATION : SPECIAL STILLING BASIN(S) SHORING #1, IMPERVIOUS DIKES #1 AND #2, AND THE TEMPORARY 24" AND 36" PIPES.
- SHIFT TRAFFIC ONTO THE EASTBOUND LANES.
- WHILE MAINTAINING FLOW IN EXISTING RCBC, (AND THE TEMPORARY PIPE INSTALLED IN PHASE I), CONSTRUCT PROPOSED 36" RCP-CLASS III, 2GI-A AND HEADWALL.
- DIVERT FLOW INTO 84" PIPE.
- REMOVE THE FOLLOWING DEVICES INSTALLED IN PHASE I: SPECIAL STILLING BASIN(S), SHORING #1, IMPERVIOUS DIKES #1 AND #2, AND THE TEMPORARY 24" AND 36" PIPES.
- COMPLETE ROADWAY AND STABILIZE DISTURBED AREAS.

REVISIONS

DATE/TIME: 10/4/14 AM  
D06: RW Erosion Control/03825B\_rwl\_EC\_201420dgn