

ENVIRONMENTALLY SENSITIVE AREA
SEE PROJECT SPECIAL PROVISIONS

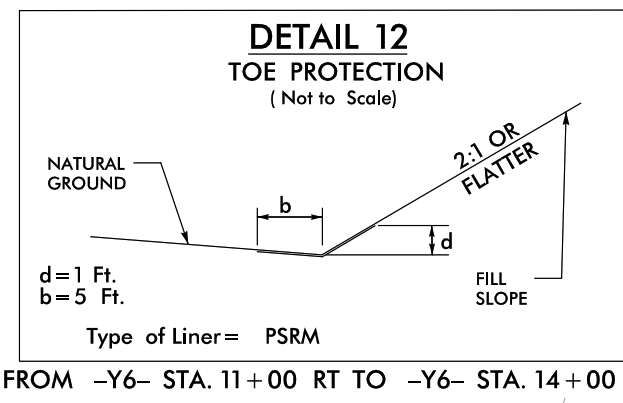
CLEARING AND GRUBBING
EROSION CONTROL FOR CONSTRUCTION SHEET 8

INSTALL PIPE(S) IN JURISDICTIONAL AREAS WITHOUT IMPACTING STREAM UNTIL AREA STABILIZED AND ACCORDING TO NCDOT BEST MANAGEMENT PRACTICES FOR CONSTRUCTION AND MAINTENANCE ACTIVITIES MANUAL.

NOTE: PLACE TEMPORARY ROCK SEDIMENT DAMS TYPE - B AND TEMPORARY ROCK SILT CHECKS TYPE - A AT DRAINAGE OUTLETS.

NOTE: PERIMETER EROSION CONTROL MEASURES SHALL BE INSTALLED DURING CLEARING AND GRUBBING PHASE.

INSTALL INLET PROTECTION IN ACCORDANCE WITH ENGINEER'S RECOMMENDATIONS



42' x 20' x 3'
1.5 inch Skimmer
with 0.75 inch Orifice Diameter
4 ft. weir
ID 8.2

32' x 16' x 3'
1.5 inch Skimmer
with 0.50 inch Orifice Diameter
4 ft. weir
ID 8.3

44' x 22' x 3'
1.5 inch Skimmer
with 0.875 inch Orifice Diameter
4 ft. weir
ID 8.1

24' x 12' x 3'
1.5 inch Skimmer
with 0.375 inch Orifice Diameter
4 ft. weir
ID 8.8

30' x 15' x 3'
1.5 inch Skimmer
with 0.50 inch Orifice Diameter
4 ft. weir
ID 8.4

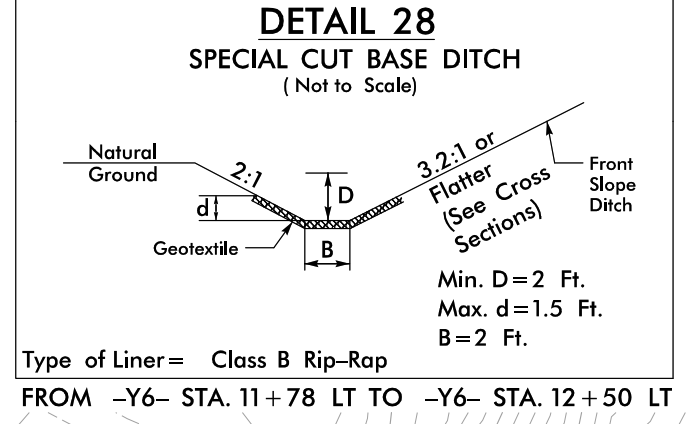
24' x 12' x 3'
1.5 inch Skimmer
with 0.375 inch Orifice Diameter
4 ft. weir
ID 8.7

36' x 18' x 3'
1.5 inch Skimmer
with 0.625 inch Orifice Diameter
4 ft. weir
ID 8.5

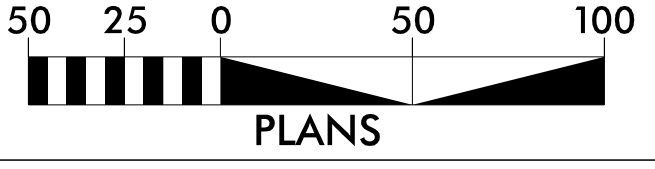
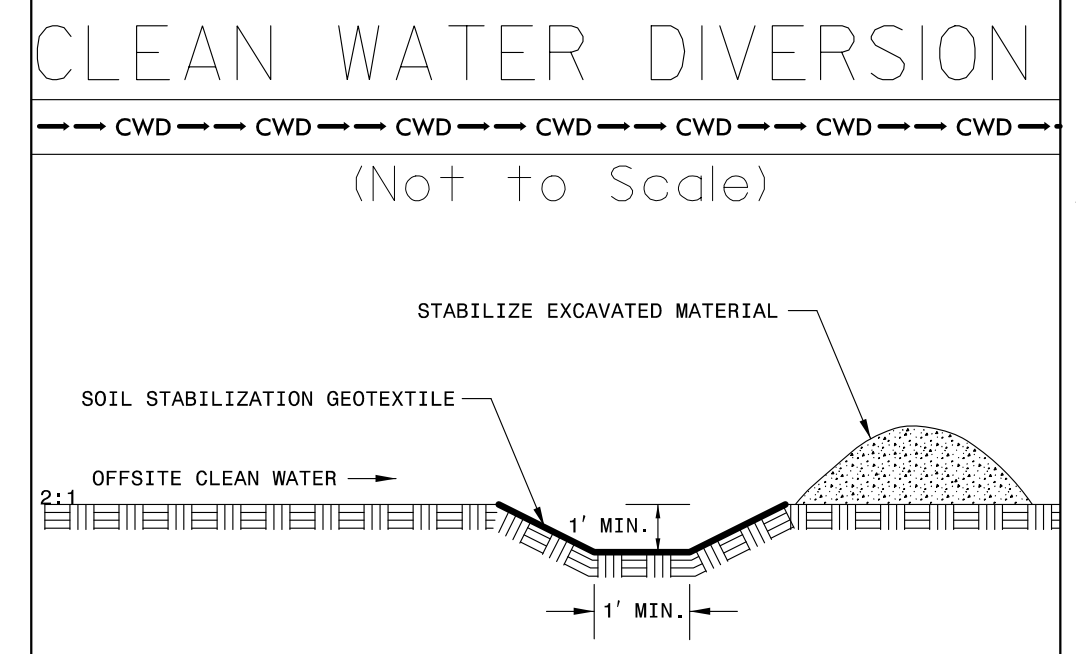
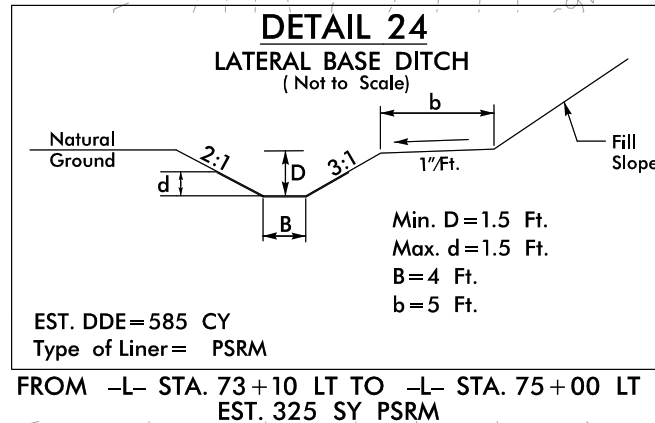
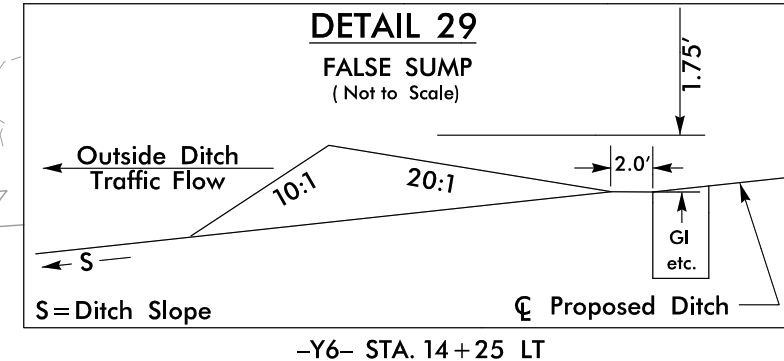
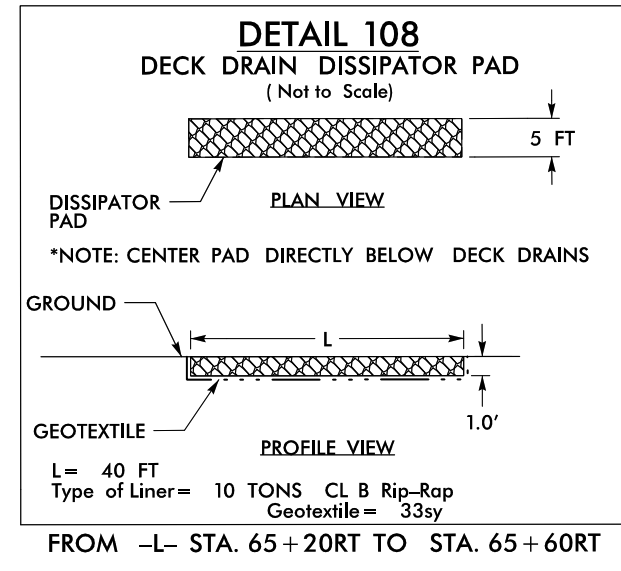
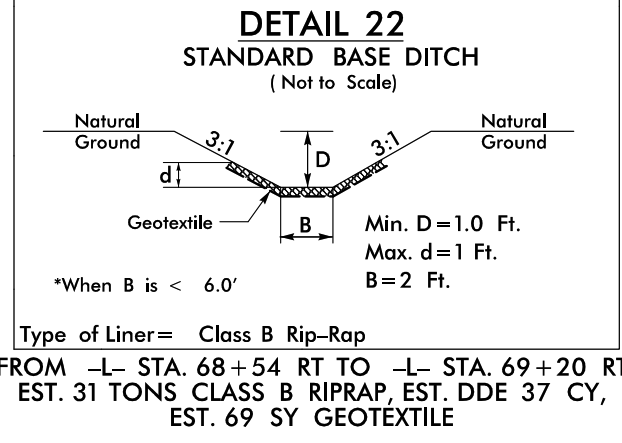
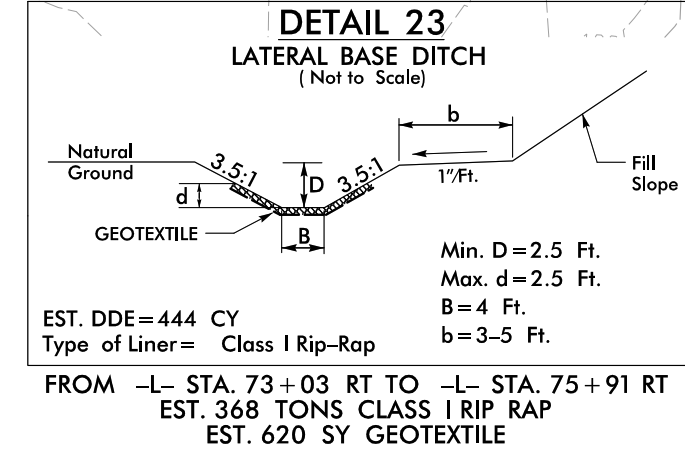
64' x 30' x 3'
1.5 inch Skimmer
with 1.25 inch Orifice Diameter
7 ft. weir
ID 8.6

NOTE: ACCESS GRANTED FOR -DRW3- UTILITY OWNER WILL BE RESPONSIBLE FOR RELOCATION & INSTALLATION OF NEW GATE. CONTROL OF ACCESS IS NOT FENCED FOR THIS PROJECT (R-3825B)

UTILITY OWNER TO PROVIDE GATE



FOR ADDITIONAL DRAINAGE DITCH DETAILS
SEE ROADWAY PLAN SHEET 8



PLANS
FOR -L- PROFILE SEE SHEET 26
FOR -Y6- PROFILE SEE SHEET 34

REVISIONS

MATCHLINE -L- STA. 62+00.00 SEE PLAN SHEET EC-07

MATCHLINE -L- STA. 75+00.00 SEE PLAN SHEET EC-09