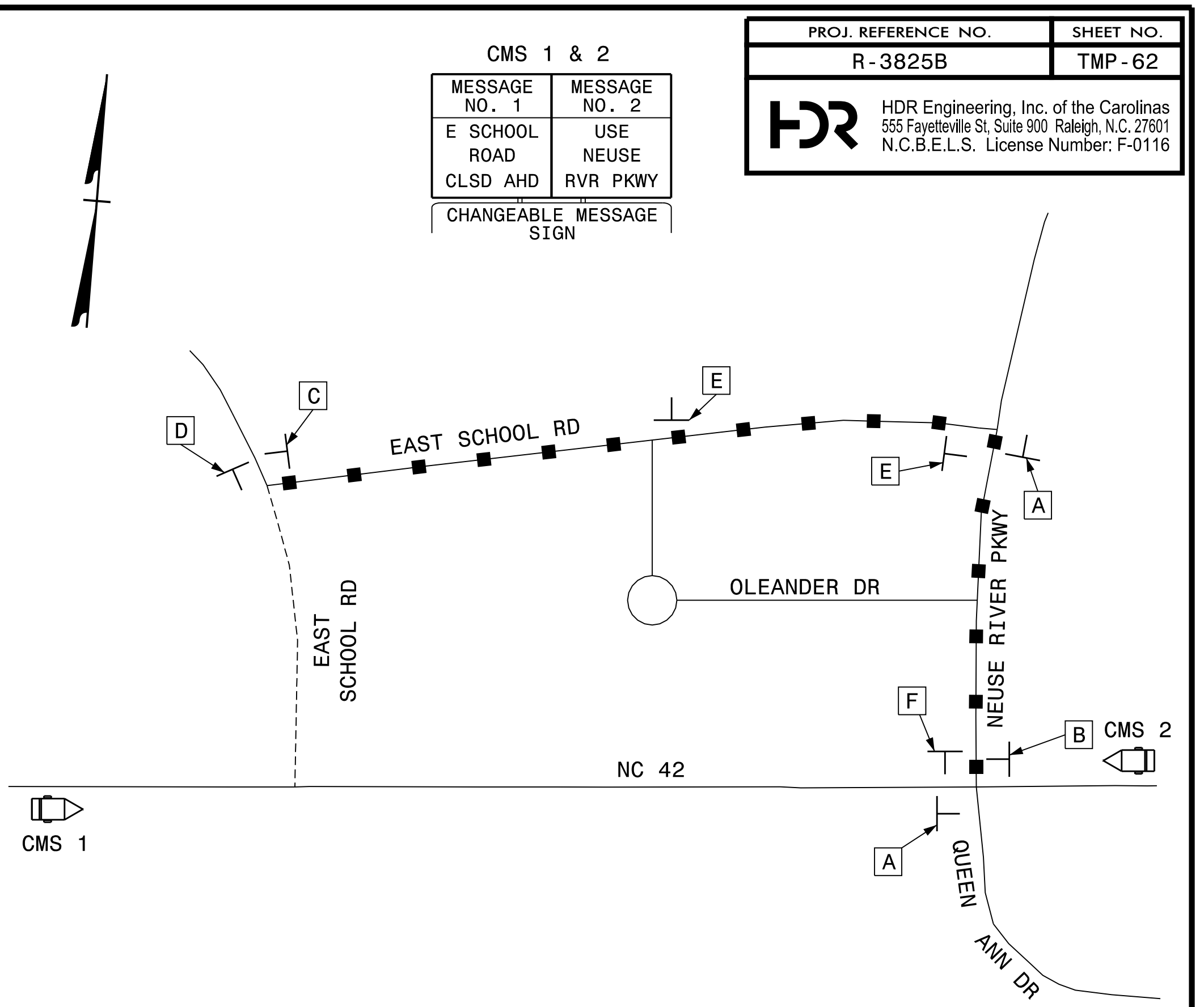
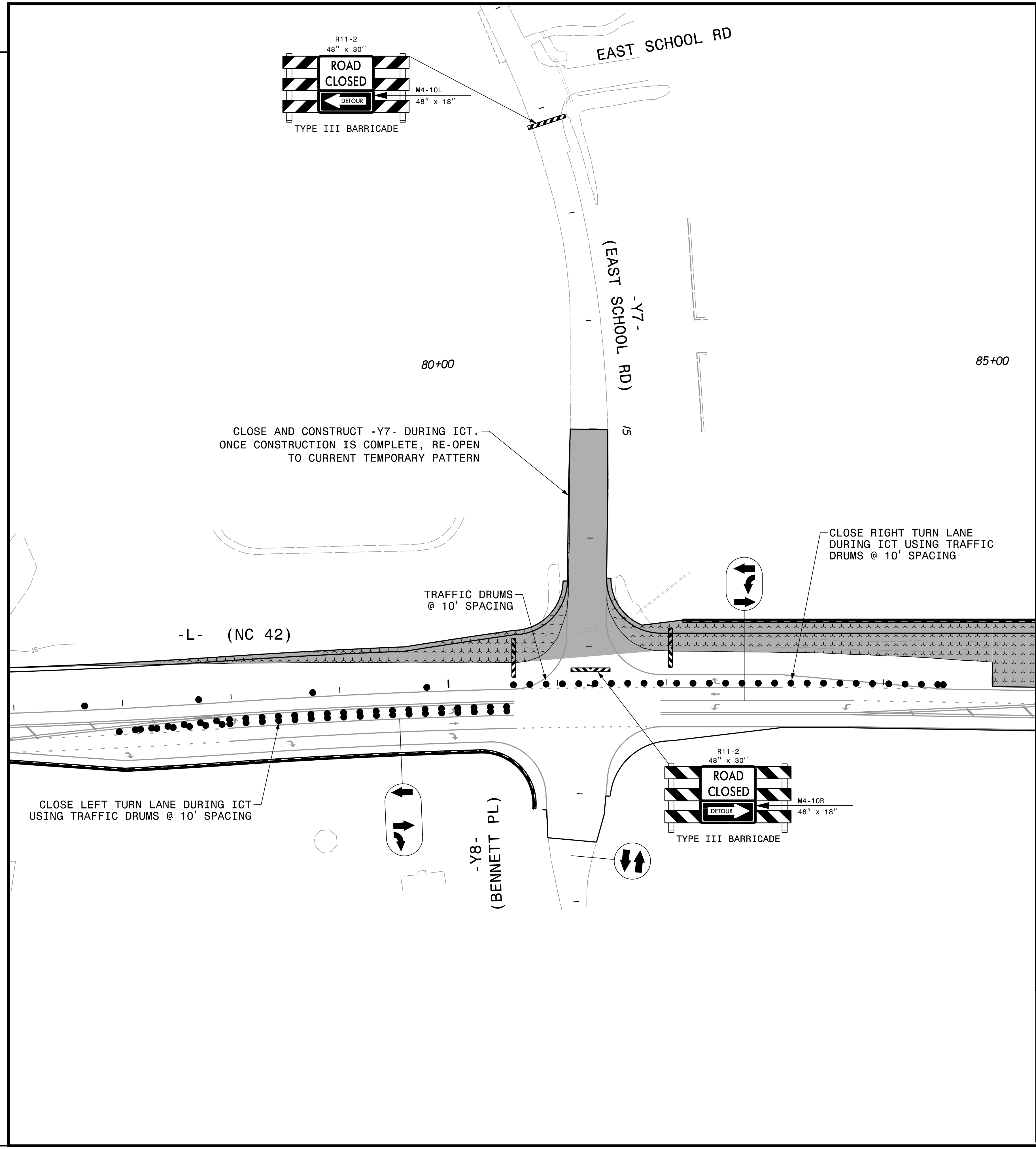


PLOT DRIVER: NCDOT_pdf_color_eng_50.plt
 USER: BSCOTT
 DATE: 6/5/2018
 TIME: 11:32:32 AM
 FILE: p:\pwhdr\users\01\hdr\US_East_01\Documents\3322\10001376\10051231\6.0_CAD_BIM\6.2_Work_In_Progress\Traffic\TrafficControl\TCP\R3825B_Tc_TMP-62.dgn

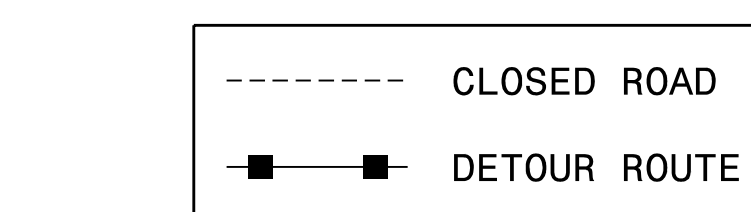
REVISIONS



CMS 1 & 2	
MESSAGE NO. 1	MESSAGE NO. 2
E SCHOOL ROAD	USE NEUSE
CLSD AHD	RVR PKWY
CHANGEABLE MESSAGE SIGN	

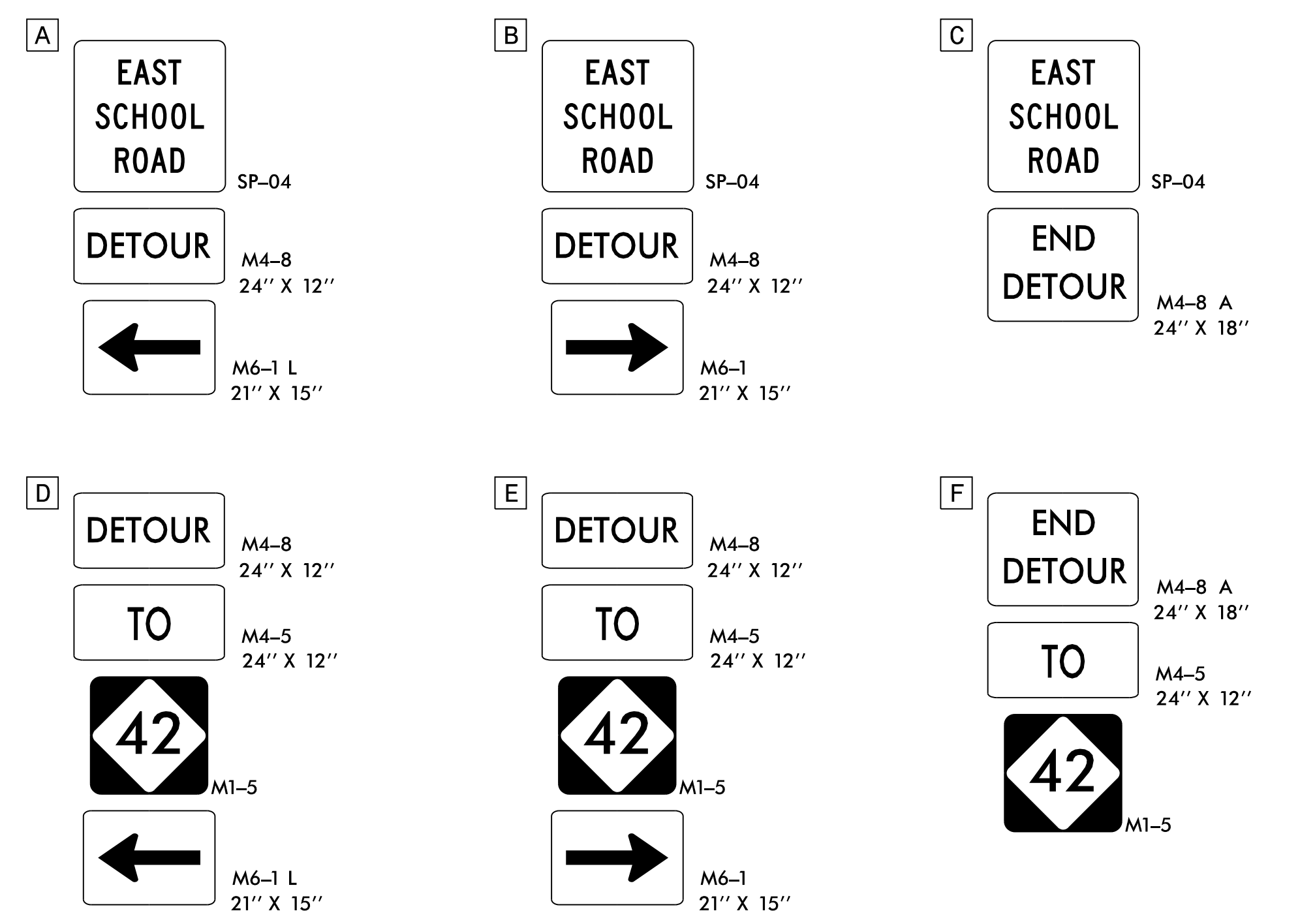
PROJ. REFERENCE NO. R-3825B	SHEET NO. TMP-62
--------------------------------	---------------------

HDR HDR Engineering, Inc. of the Carolinas
555 Fayetteville St, Suite 900 Raleigh, N.C. 27601
N.C.B.E.L.S. License Number: F-0116



NOTES:

- SEE RSD 1101.03, SHEET 2 OF 9 AND THIS SHEET FOR ADDITIONAL SIGN AND BARRICADE PLACEMENT.
- SEE SHEET TMP-02N FOR SP-04 SIGN DESIGN.

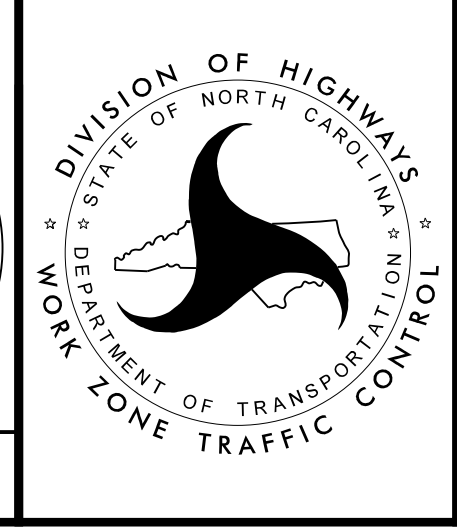


APPROVED: *Michelle Ward*

DATE: 6/6/2018

SEAL

NORTH CAROLINA
PROFESSIONAL
SEAL
033789
ENGINEER
MICHELLE WARD



PHASE 2 - STEP 1A

DOCUMENT NOT CONSIDERED FINAL
UNLESS ALL SIGNATURES COMPLETED