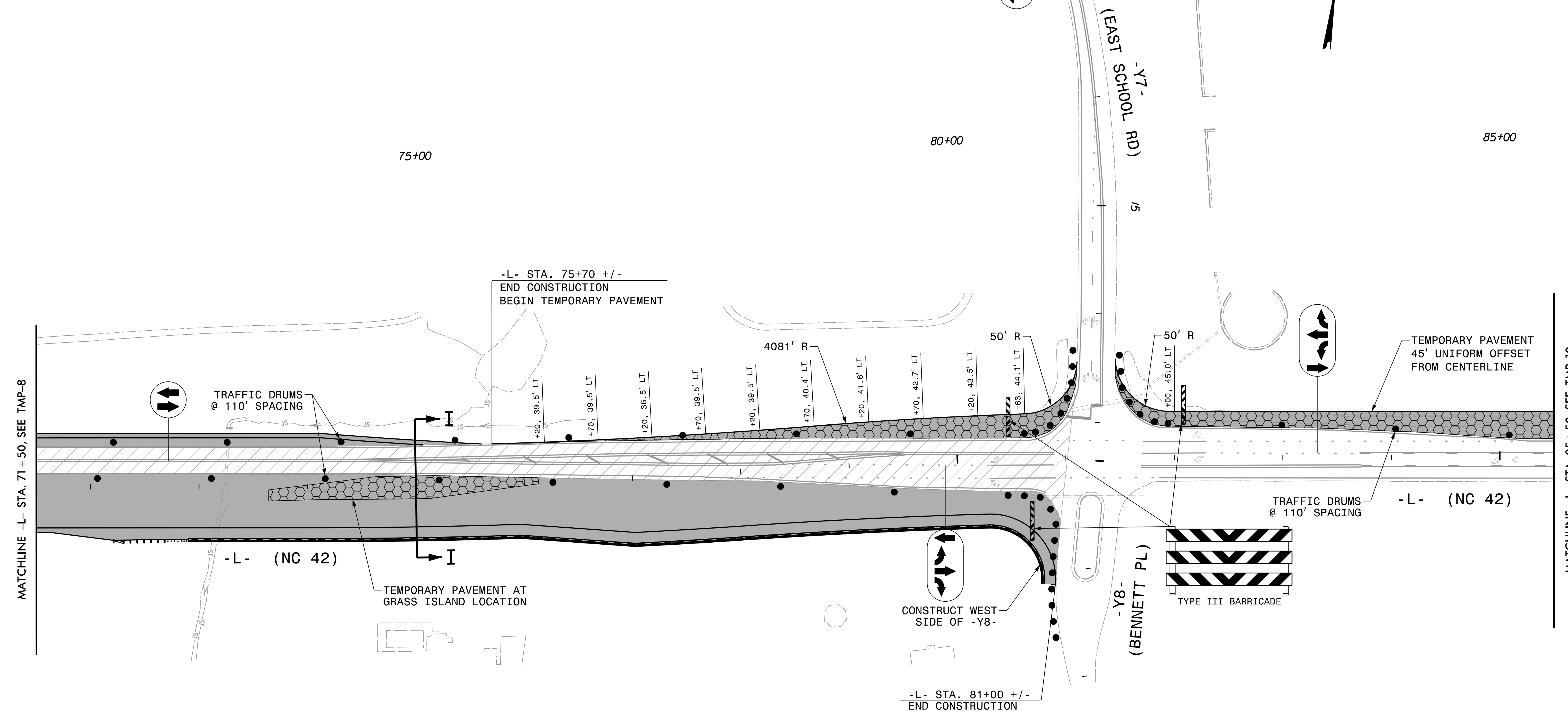


### EAST CLAYTON ELEMENTARY SCHOOL



MATCHLINE -L- STA. 71+50, SEE TMP-8

MATCHLINE -L- STA. 85+50, SEE TMP-10

-L- STA. 75+70 +/-  
END CONSTRUCTION  
BEGIN TEMPORARY PAVEMENT

-L- STA. 81+00 +/-  
END CONSTRUCTION

TRAFFIC DRUMS  
@ 110' SPACING

TRAFFIC DRUMS  
@ 110' SPACING -L- (NC 42)

TEMPORARY PAVEMENT AT  
GRASS ISLAND LOCATION

TEMPORARY PAVEMENT  
45' UNIFORM OFFSET  
FROM CENTERLINE

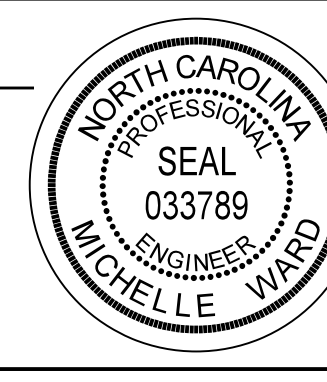
TYPE III BARRICADE

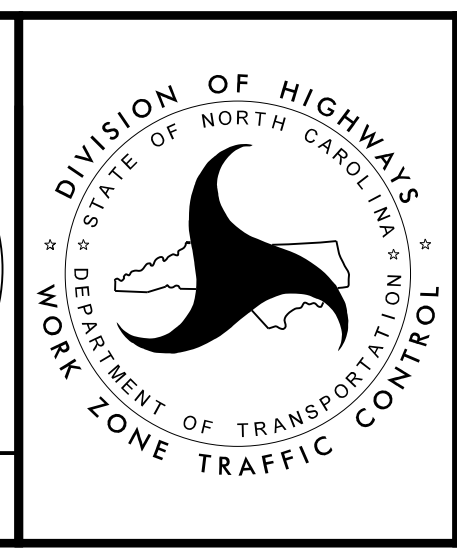
CONSTRUCT WEST  
SIDE OF -Y8-

REVISIONS

NOTES:  
1. SEE SHEET TMP-2F FOR CUT SECTION I-I.

PLOT DRIVER: NCDOT\_pdf\_color\_eng\_50.plt  
USER: BSCOTT  
DATE: 6/5/2018  
PENTABLE: NCDOT\_tcp.tbl  
TIME: 11:21:55 AM  
FILE: p:\pwhdr\users\01\hdr\US\_East\_01\Documents\3322\10001376\10051231\6.0\_CAD\_BIM\6.2\_Work\_In\_Progress\TrafficControl\TCP\R3825B\_TC\_TMP-09.dgn

APPROVED: *Michelle Ward*  
 DATE: 6/6/2018  
 SEAL  
  
 DOCUMENT NOT CONSIDERED FINAL  
 UNLESS ALL SIGNATURES COMPLETED



## PHASE 1 - STEP 1