

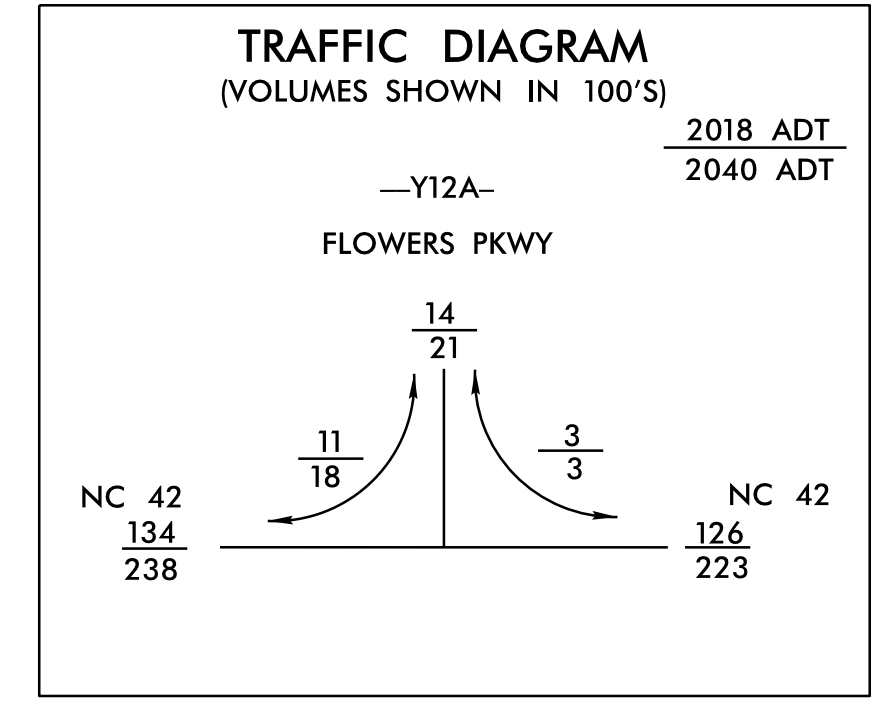
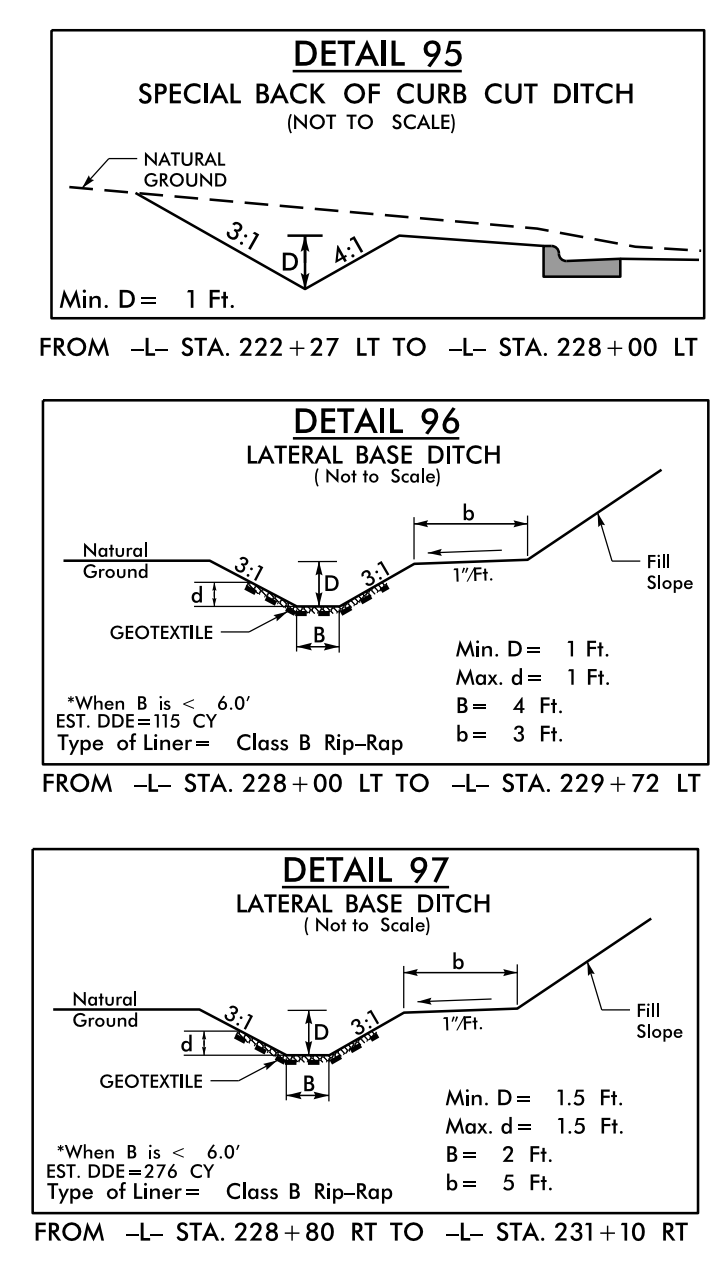
8/17/19

REVISIONS  
1 - ROW, PUE AND EASEMENTS UPDATED ON PARCEL 100 FROM STA. 218+77 TO 244+77 (10/12/2018) TLH  
10/16/2019 - CONSTRUCTION REVISION: ADDED A RIGHT TURN FROM -L- STATION 224+35.00 TO 229+08.67 RIGHT AND REMOVED -DRW13- AT -L- STA. 228+86.87 TO 229+52.33.  
HYDRAULICS WAS ALSO REVISED IN THESE AREAS. HN

16-OCT-2019 11:05  
193825B-rch-20.dgn

MATCHLINE -L- STA. 216+00.00 SEE SHEET 19

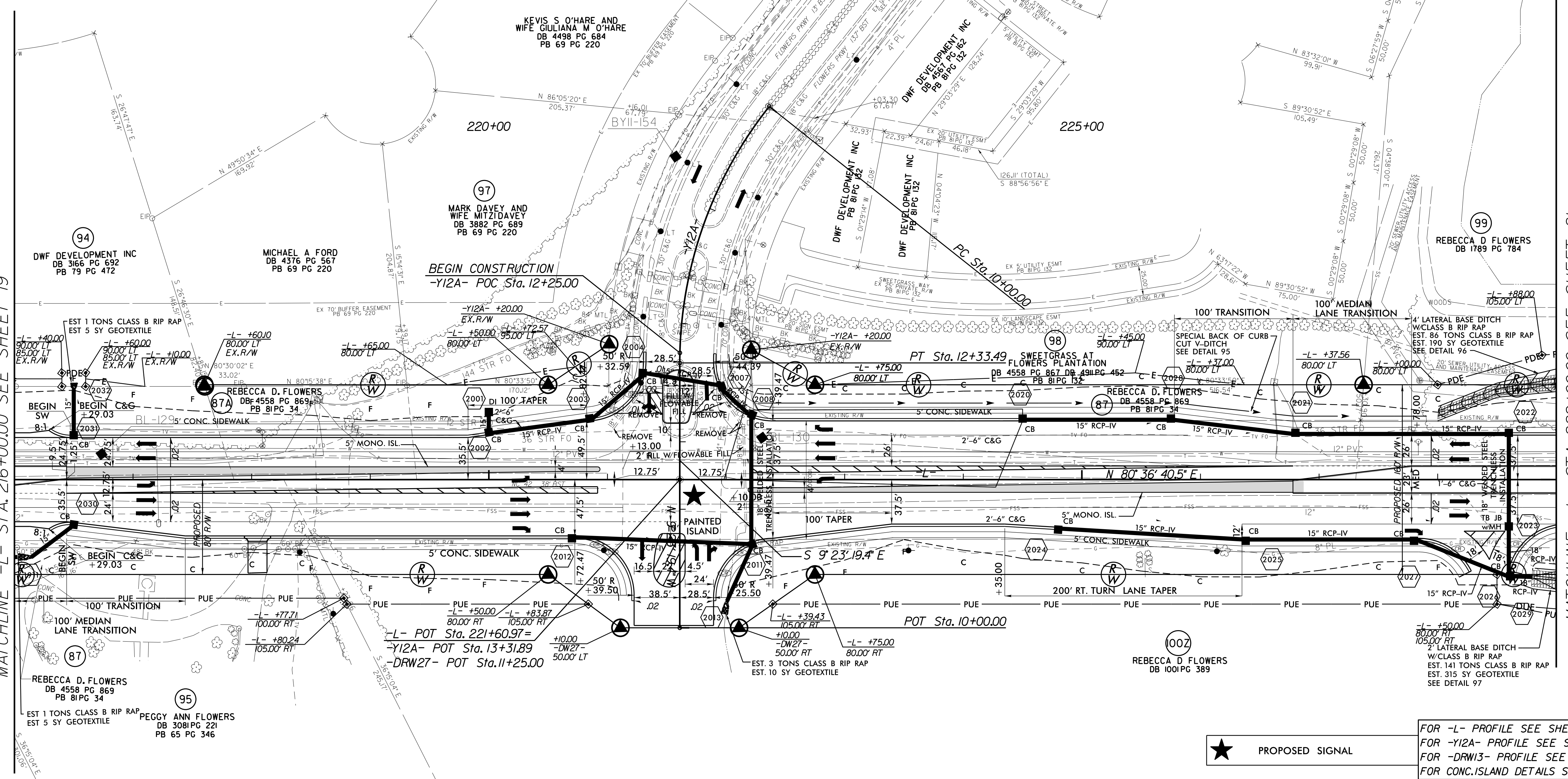
MATCHLINE -L- STA. 229+00.00 SEE SHEET 21



**-Y12A- FLOWERS PKWY**  
 PI Sta 11+21.34  
 $\Delta = 38' 28' 14.5''$  (LT)  
 $D = 16' 28' 36.2''$   
 $L = 233.49'$   
 $T = 121.34'$   
 $R = 347.74'$

Prepared by  
**URS**  
 URS Corporation - North Carolina  
 1600 Perimeter Park Drive  
 Morrisville, North Carolina 27560  
 TELEPHONE: (919) 461-1100 FAX: (919) 461-1415  
 NC LICENSE # C-2243

PROJECT REFERENCE NO. <b>R-3825B</b>	SHEET NO. <b>20</b>
RW SHEET NO.	
ROADWAY DESIGN ENGINEER NOT A CERTIFIED DOCUMENT AS TO THE ORIGINAL DOCUMENT	HYDRAULICS ENGINEER NOT A CERTIFIED DOCUMENT AS TO THE ORIGINAL DOCUMENT
THIS DOCUMENT ORIGINALLY ISSUED AND SEALED BY: EDWARD GLENN EDENS, JR. 18470 ON 08/09/2018	THIS DOCUMENT ORIGINALLY ISSUED AND SEALED BY: MEME D. BUSCEMI 037863 ON 08/09/2018
THIS DOCUMENT IS ONLY CERTIFIED AS TO THE REVISIONS.	THIS DOCUMENT IS ONLY CERTIFIED AS TO THE REVISIONS.
<b>DOCUMENT NOT CONSIDERED FINAL UNLESS ALL SIGNATURES COMPLETED</b>	
ROADWAY DESIGN ENGINEER Professional Seal SEAL 024641 TATIANA L. WHITE 10/16/2019 THIS DOCUMENT IS ONLY CERTIFIED AS TO THE REVISIONS.	HYDRAULICS ENGINEER Professional Seal SEAL 043912 Matthew J. York 10/16/2019 THIS DOCUMENT IS ONLY CERTIFIED AS TO THE REVISIONS.



★ PROPOSED SIGNAL

FOR -L- PROFILE SEE SHEET 32  
 FOR -Y12A- PROFILE SEE SHEET 35  
 FOR -DRW13- PROFILE SEE SHEET 39  
 FOR CONC. ISLAND DETAILS SEE SHEET 2B-6