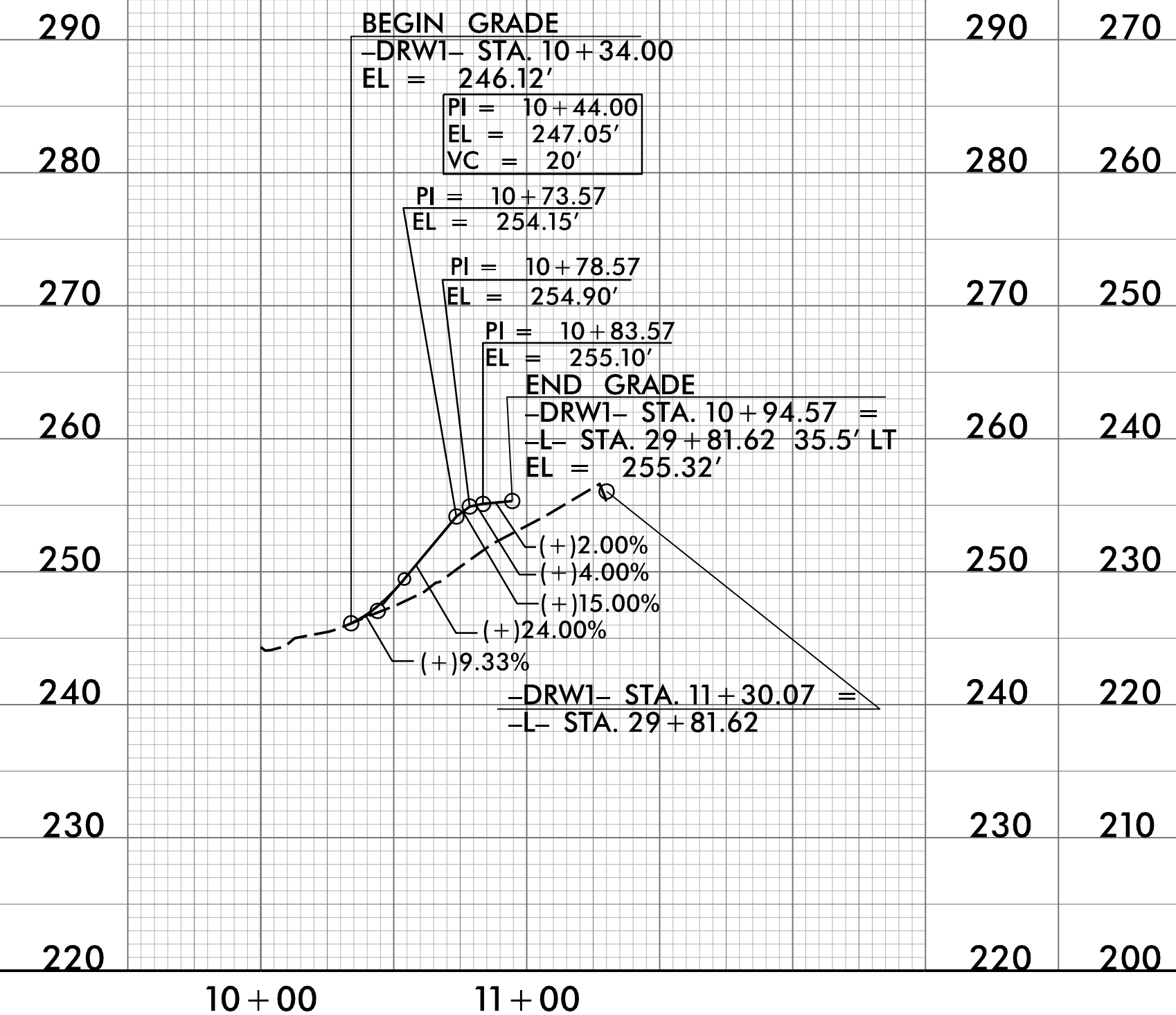
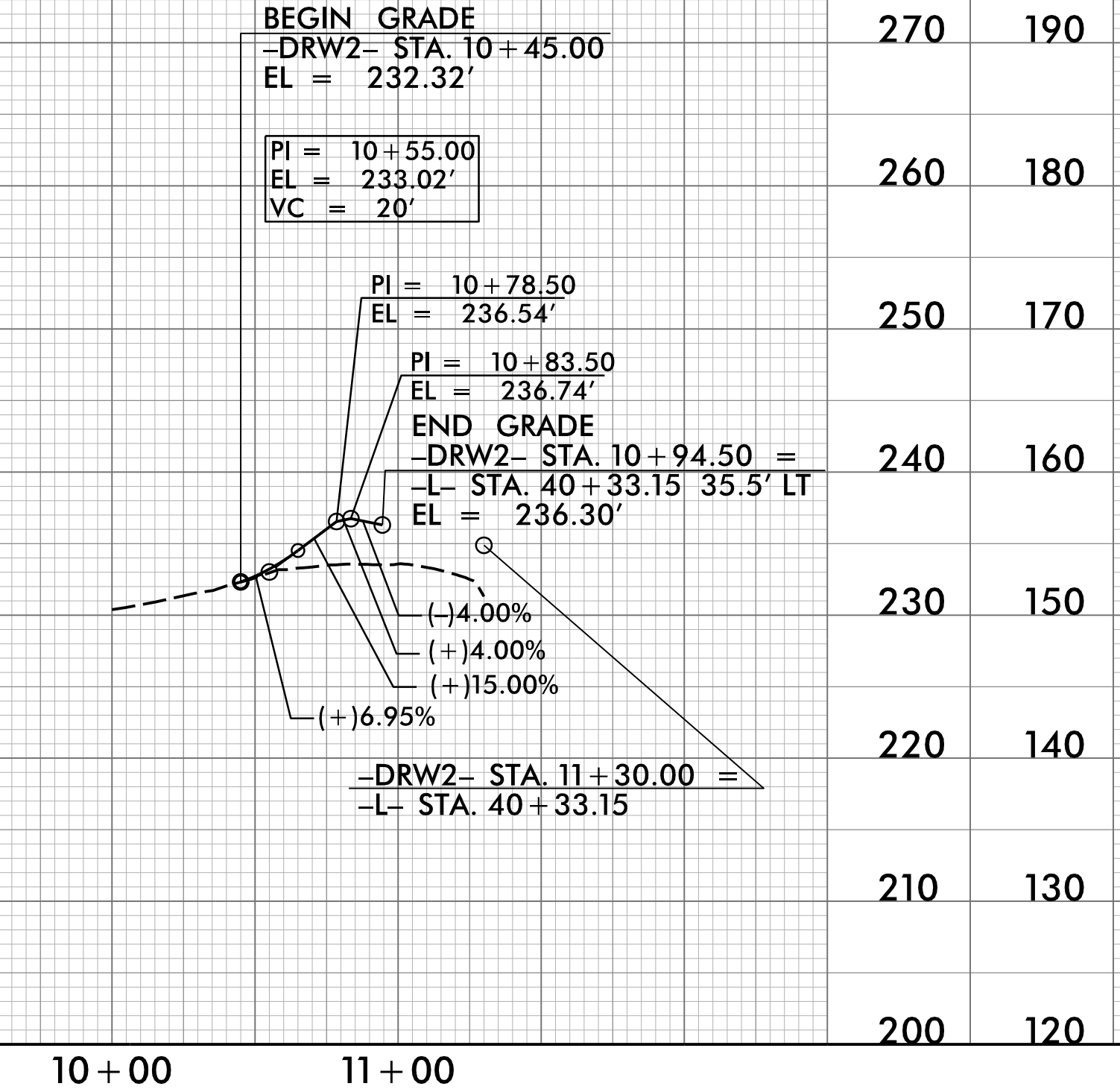


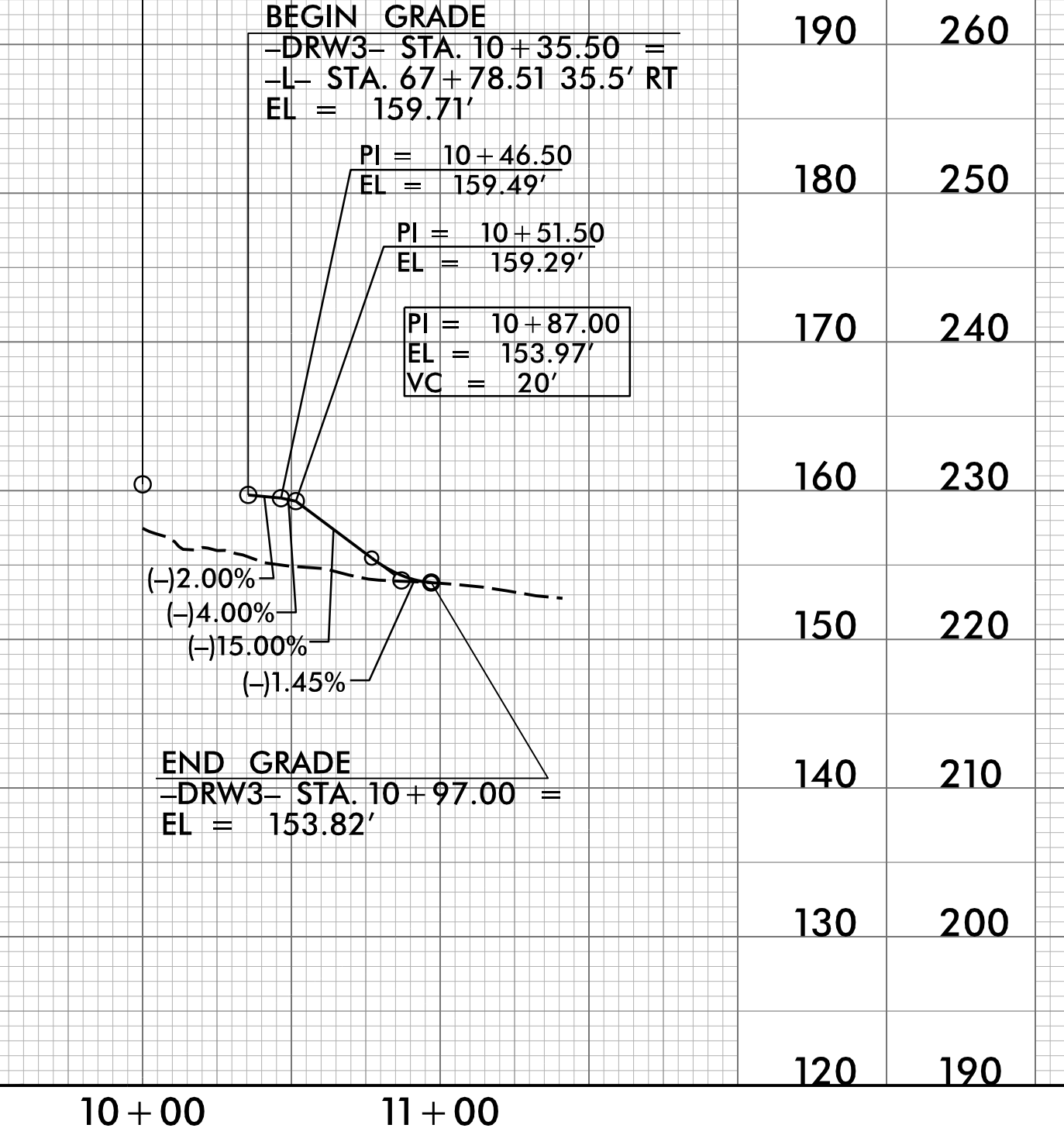
-DRW1-



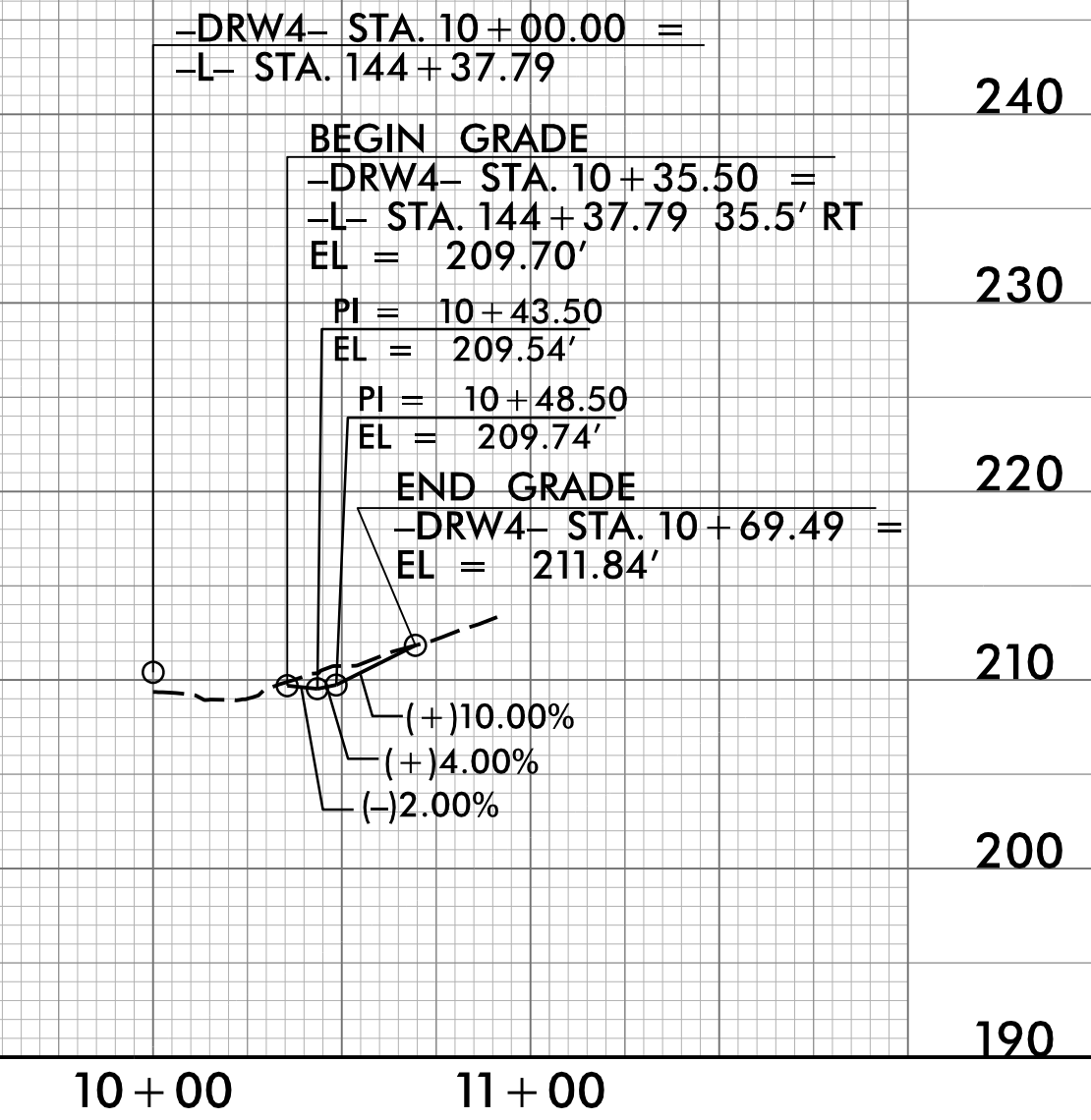
-DRW2-



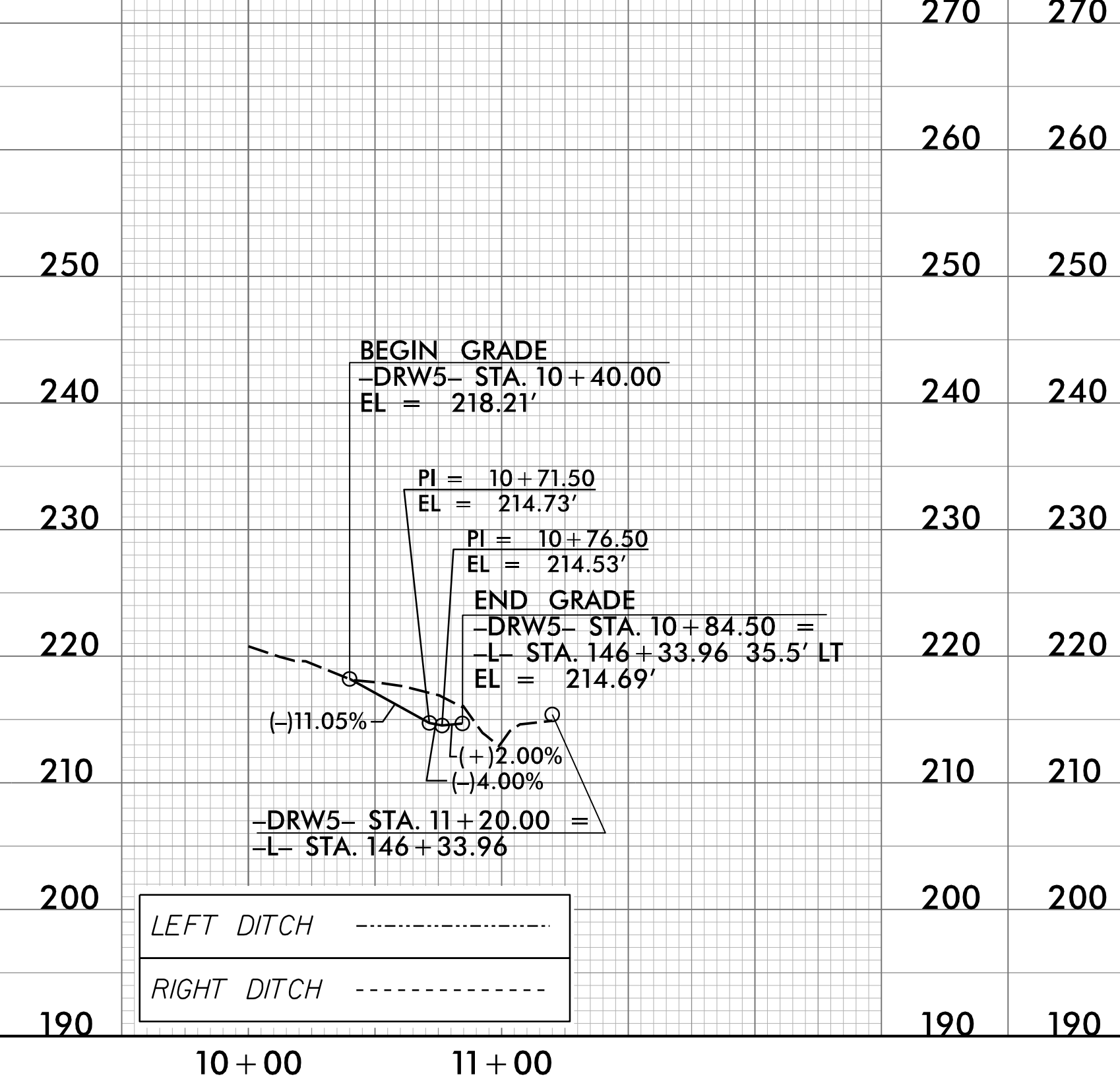
-DRW3-



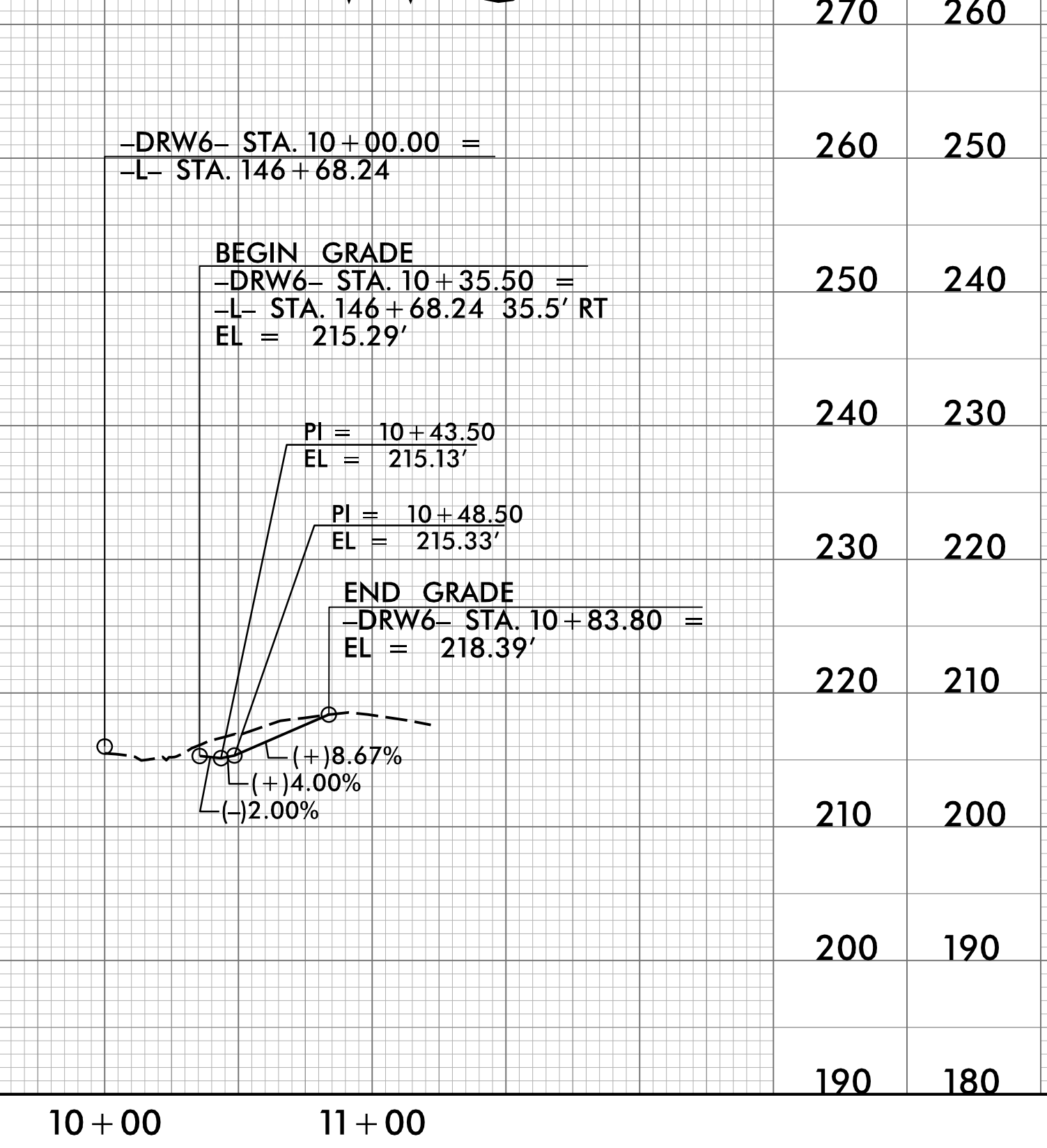
-DRW4-



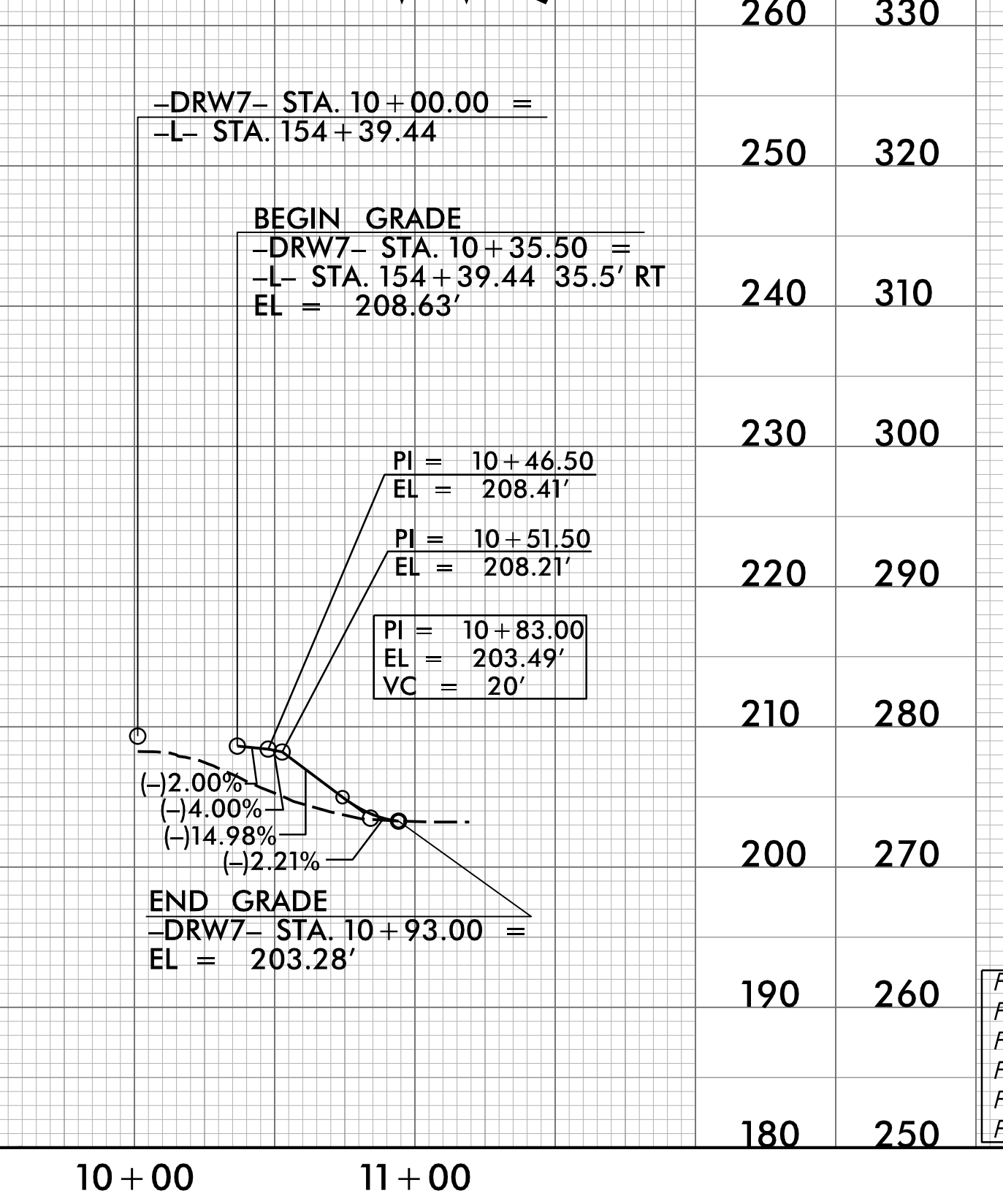
-DRW5-



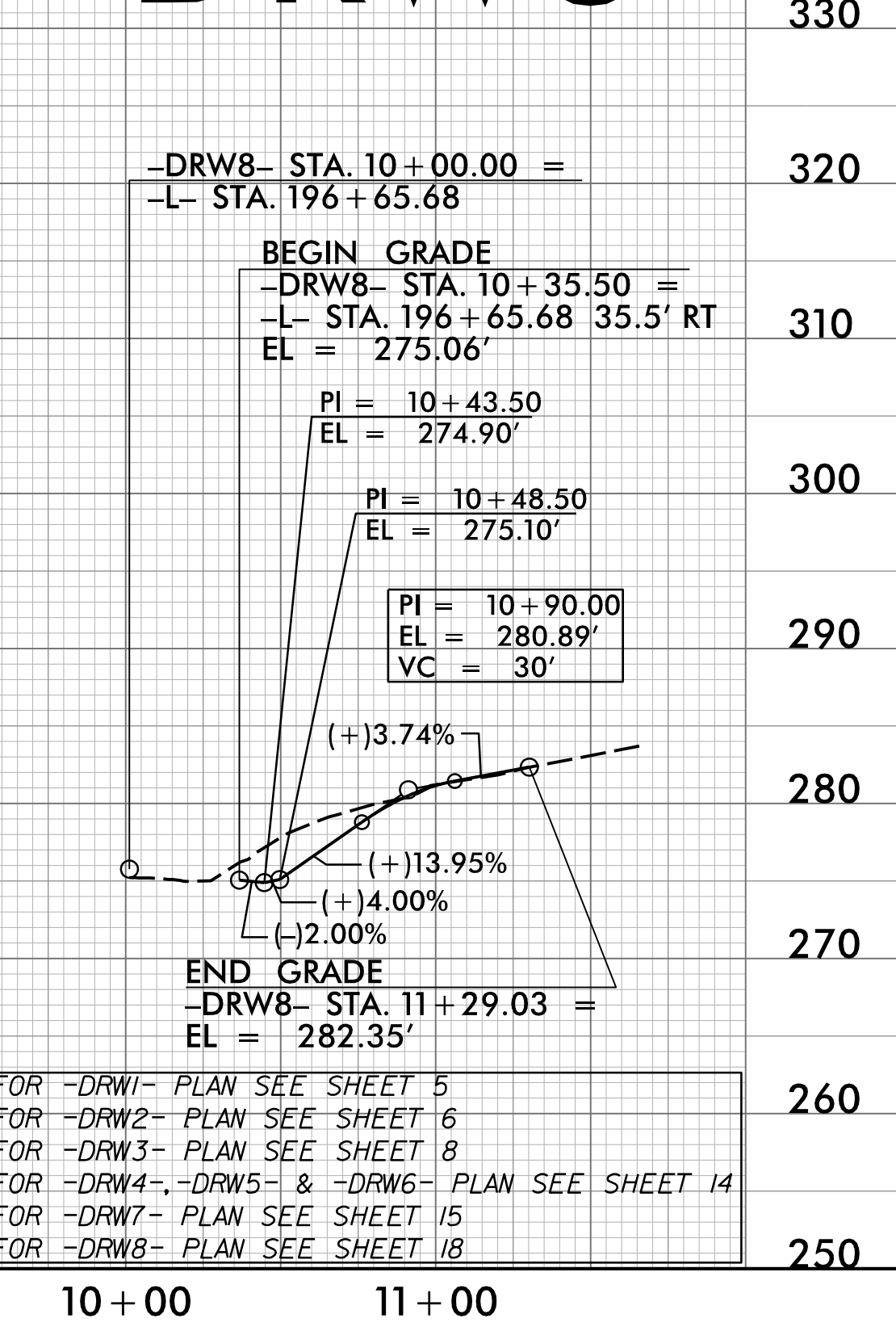
-DRW6-



-DRW7-



-DRW8-



LEFT DITCH
RIGHT DITCH

FOR -DRW1- PLAN SEE SHEET 5
FOR -DRW2- PLAN SEE SHEET 6
FOR -DRW3- PLAN SEE SHEET 8
FOR -DRW4-, -DRW5- & -DRW6- PLAN SEE SHEET 14
FOR -DRW7- PLAN SEE SHEET 15
FOR -DRW8- PLAN SEE SHEET 18

Prepared by
URS
URS Corporation - North Carolina
1600 Perimeter Park Drive
Morrisville, North Carolina 27560
TELEPHONE (919) 461-1100 FAX (919) 461-1415
NC LICENSE # C-25438

PROJECT REFERENCE NO.
R-3825B

SHEET NO.
38

ROADWAY DESIGN ENGINEER
Glenn Edeis

HYDRAULICS ENGINEER
Wendell D. Buscemi

DOCUMENT NOT CONSIDERED FINAL
UNLESS ALL SIGNATURES COMPLETED