

5/28/19

Prepared by  
**URS**  
 URS Corporation - North Carolina  
 1600 Perimeter Park Drive  
 Morrisville, North Carolina 27560  
 TELEPHONE (919) 461-1100 FAX (919) 461-1415  
 NC LICENSE # C-25243

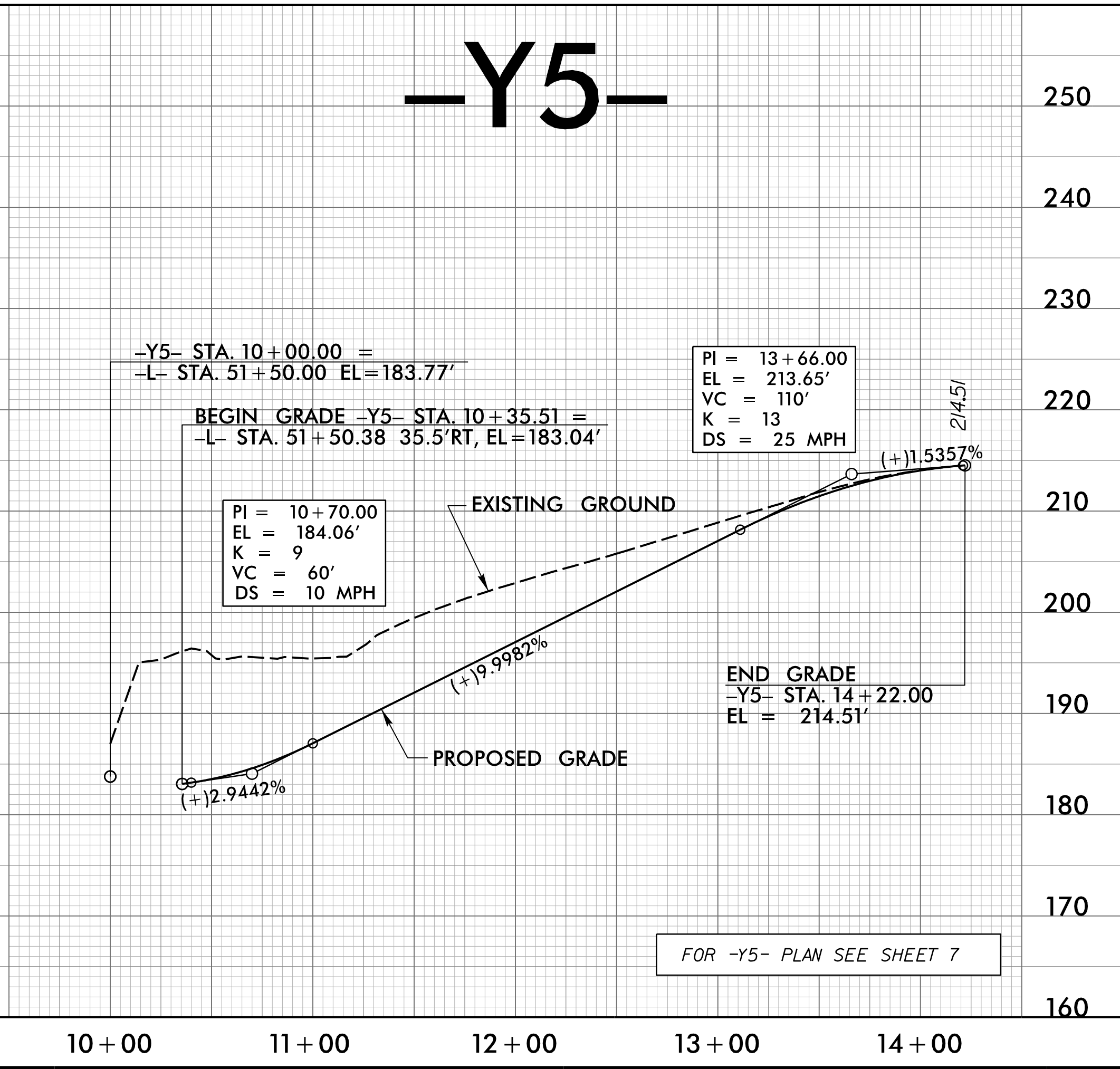
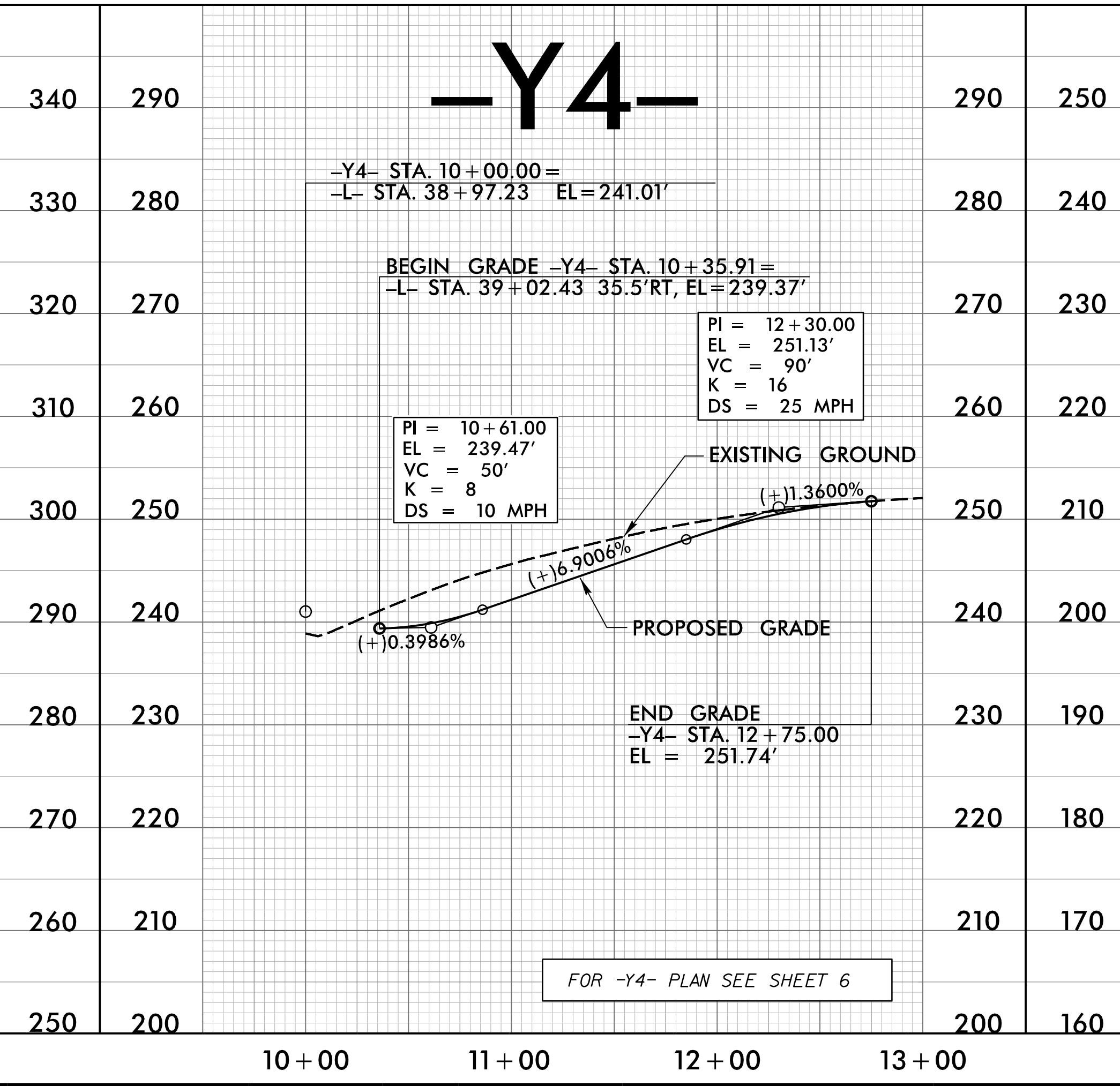
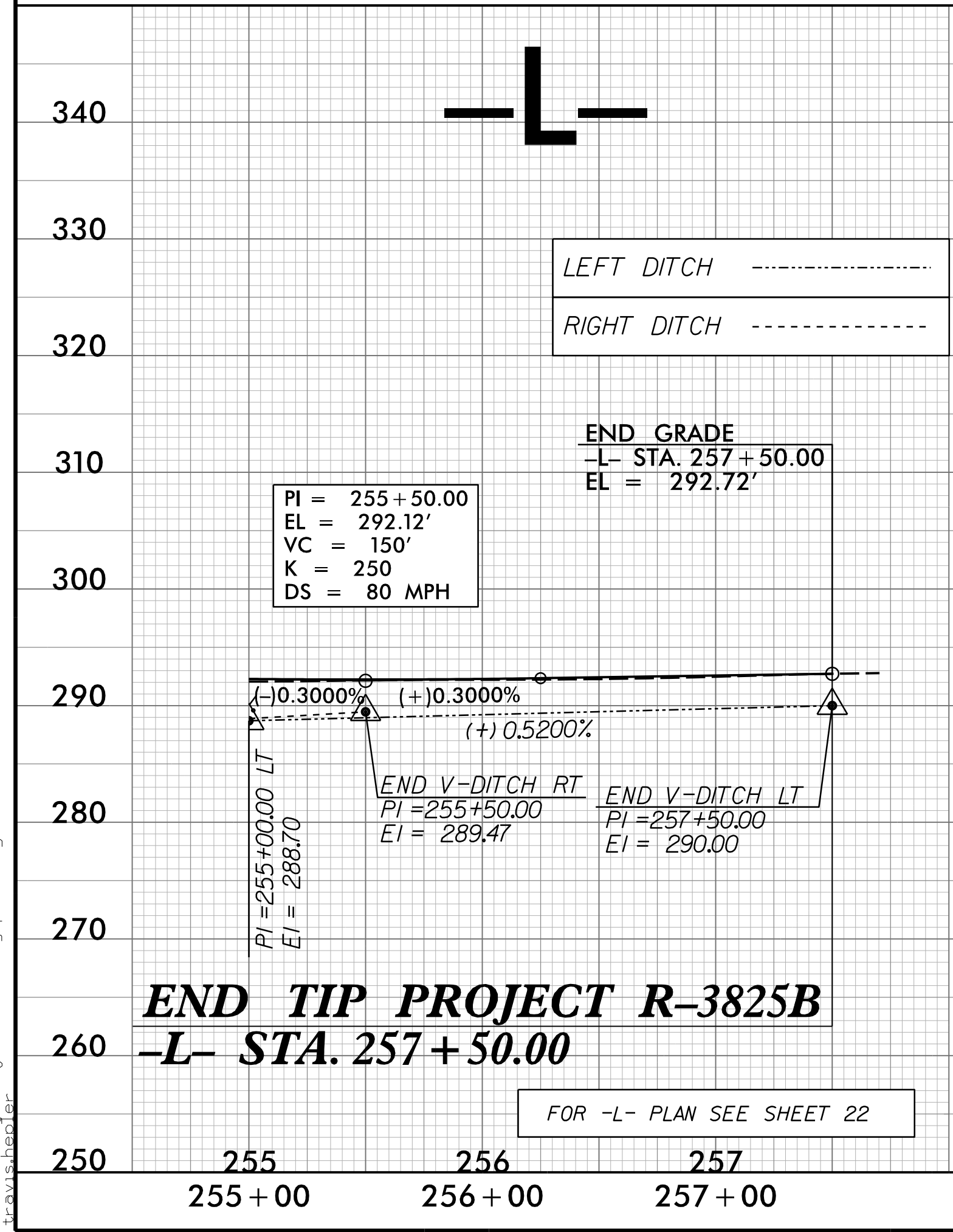
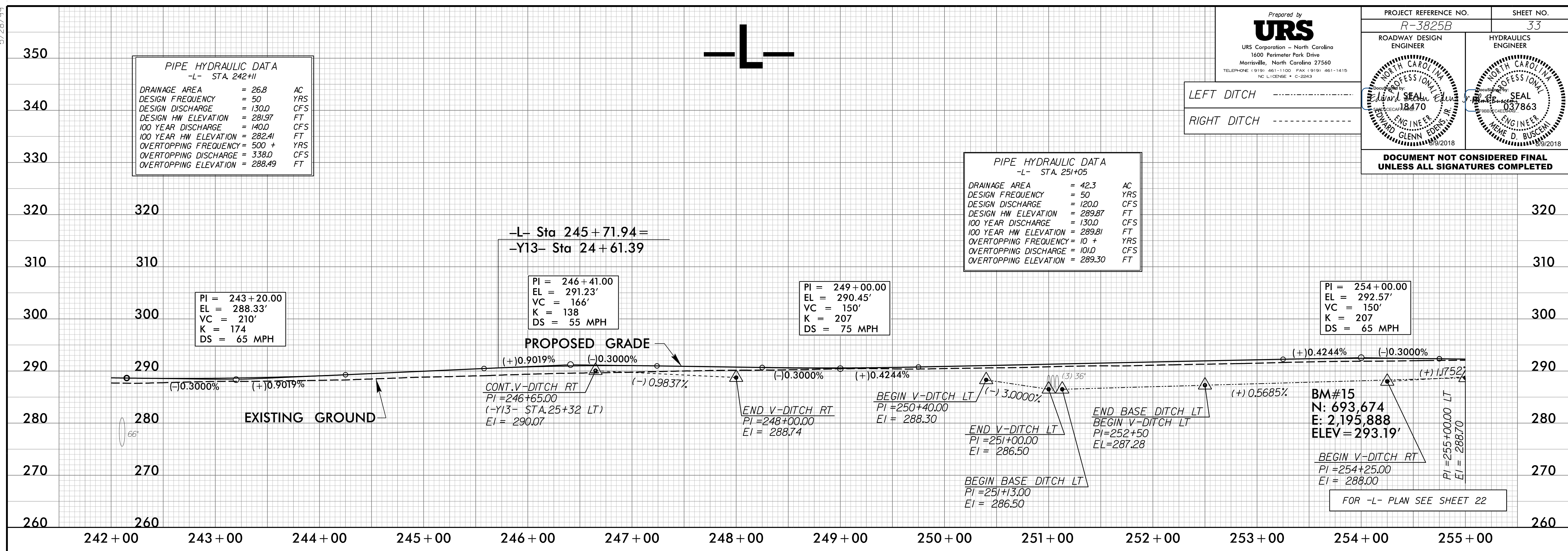
PROJECT REFERENCE NO. <b>R-3825B</b>	SHEET NO. <b>33</b>
ROADWAY DESIGN ENGINEER	HYDRAULICS ENGINEER
<b>DOCUMENT NOT CONSIDERED FINAL UNLESS ALL SIGNATURES COMPLETED</b>	

**PIPE HYDRAULIC DATA**  
 -L- STA. 242+00

DRAINAGE AREA	= 26.8	AC
DESIGN FREQUENCY	= 50	YRS
DESIGN DISCHARGE	= 130.0	CFS
DESIGN HW ELEVATION	= 281.97	FT
100 YEAR DISCHARGE	= 140.0	CFS
100 YEAR HW ELEVATION	= 282.41	FT
OVERTOPPING FREQUENCY	= 500 +	YRS
OVERTOPPING DISCHARGE	= 338.0	CFS
OVERTOPPING ELEVATION	= 288.49	FT

**PIPE HYDRAULIC DATA**  
 -L- STA. 251+05

DRAINAGE AREA	= 42.3	AC
DESIGN FREQUENCY	= 50	YRS
DESIGN DISCHARGE	= 120.0	CFS
DESIGN HW ELEVATION	= 289.87	FT
100 YEAR DISCHARGE	= 130.0	CFS
100 YEAR HW ELEVATION	= 289.81	FT
OVERTOPPING FREQUENCY	= 10 +	YRS
OVERTOPPING DISCHARGE	= 101.0	CFS
OVERTOPPING ELEVATION	= 289.30	FT



R:\2018\08\08\p\_o\13825b\_r.dwg, pf133.dgn