

5/28/19

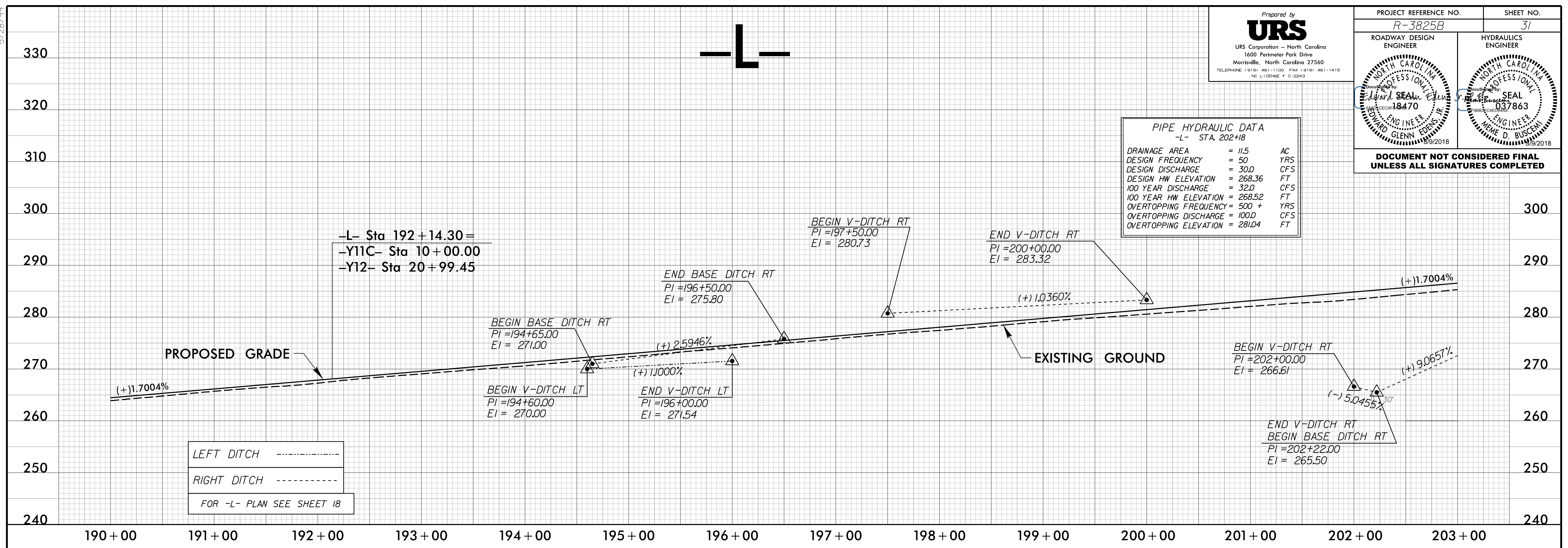
Prepared by
URS
 URS Corporation - North Carolina
 1600 Perimeter Park Drive
 Morrisville, North Carolina 27560
 TELEPHONE (919) 461-1100 FAX (919) 461-1415
 NC LIC. ENG. # 3470

PROJECT REFERENCE NO. R-3825B	SHEET NO. 31
ROADWAY DESIGN ENGINEER	HYDRAULICS ENGINEER
Glenn Edeis Professional Engineer No. 8470 State of North Carolina 12/28/1998	Glenn Edeis Professional Engineer No. 037863 State of North Carolina 12/28/1998

**DOCUMENT NOT CONSIDERED FINAL
UNLESS ALL SIGNATURES COMPLETED**

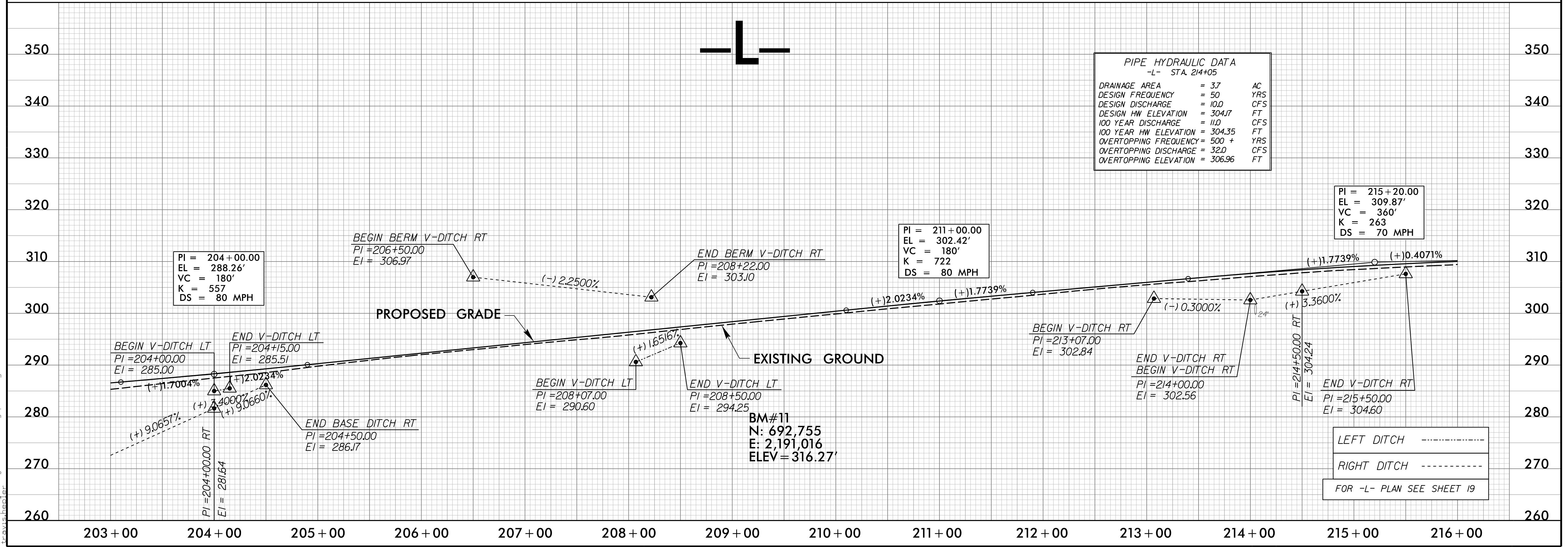
PIPE HYDRAULIC DATA
-L- STA. 202+18

DRAINAGE AREA	= 11.5	AC
DESIGN FREQUENCY	= 50	YRS
DESIGN DISCHARGE	= 30.0	CFS
DESIGN HW ELEVATION	= 268.36	FT
100 YEAR DISCHARGE	= 32.0	CFS
100 YEAR HW ELEVATION	= 268.52	FT
OVERTOPPING FREQUENCY	= 500 +	YRS
OVERTOPPING DISCHARGE	= 100.0	CFS
OVERTOPPING ELEVATION	= 281.04	FT



PIPE HYDRAULIC DATA
-L- STA. 214+05

DRAINAGE AREA	= 3.7	AC
DESIGN FREQUENCY	= 50	YRS
DESIGN DISCHARGE	= 10.0	CFS
DESIGN HW ELEVATION	= 304.17	FT
100 YEAR DISCHARGE	= 11.0	CFS
100 YEAR HW ELEVATION	= 304.35	FT
OVERTOPPING FREQUENCY	= 500 +	YRS
OVERTOPPING DISCHARGE	= 32.0	CFS
OVERTOPPING ELEVATION	= 306.96	FT



R:\2018\proj\2018\193825B-r.dwg-04/13/19