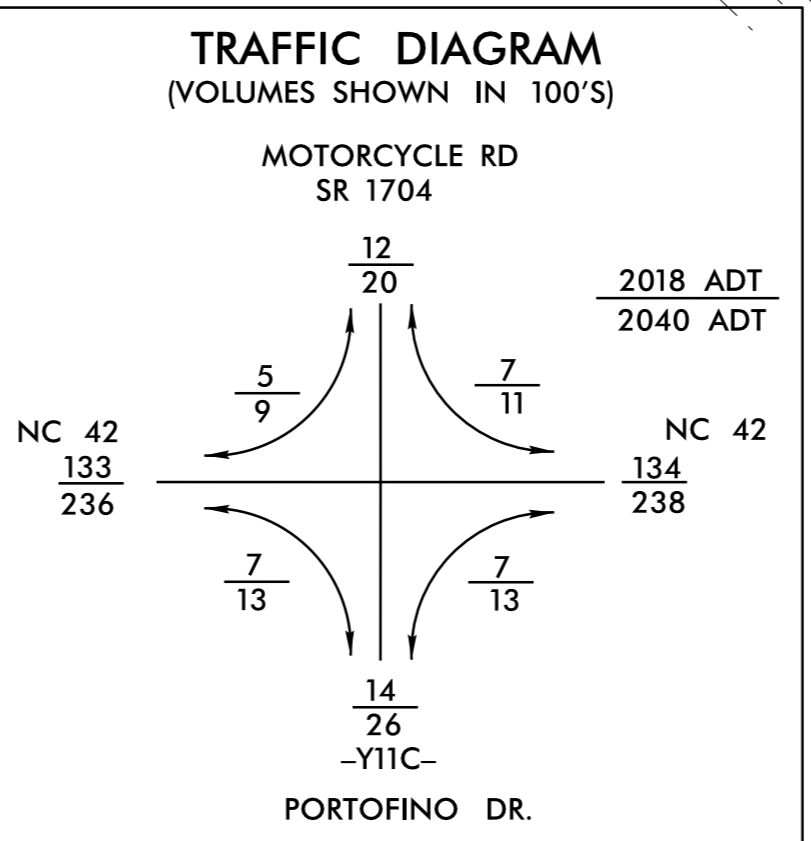
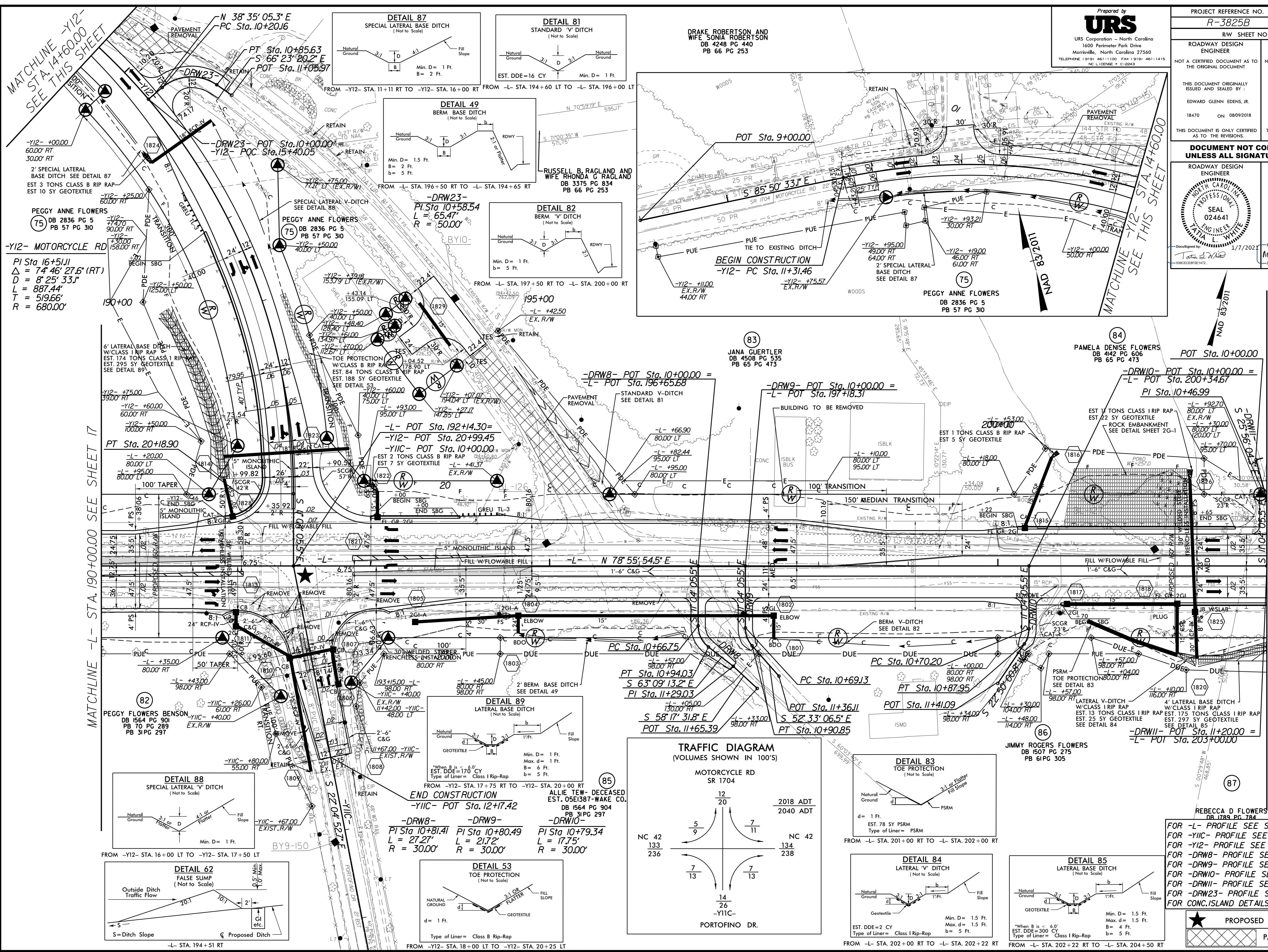


8/17/19

REVISIONS
02/19/2020 - CONSTRUCTION REVISION: REVISED LANE CONFIGURATION AND DRAINAGE TO INCLUDE A RIGHT TURN LANE ON -Y12- REMOVED MEDIAN STRIPING ON -Y12- TO CONTINUE THROUGHOUT THROUGH LANE FN
01/08/2021 - CONSTRUCTION REVISION: EXTENDED FULL WIDTH RIGHT TURN LANE AND CHANGED BERM TO 6' FROM -Y12- STA 11+17.42 TO 12+17.42 LEFT-MODIFIED ADJACENT DRAINAGE (FN)

06-JAN-2021 15:44
19-38-25-2021 11:18-dgn
3-23-2021 11:18-dgn



PROJECT REFERENCE NO. R-3825B	SHEET NO. 18
RW SHEET NO.	
ROADWAY DESIGN ENGINEER NOT A CERTIFIED DOCUMENT AS TO THE ORIGINAL DOCUMENT	HYDRAULICS ENGINEER NOT A CERTIFIED DOCUMENT AS TO THE ORIGINAL DOCUMENT
THIS DOCUMENT ORIGINALLY ISSUED AND SEALED BY: EDWARD GLENN EDENS, JR. 18470 ON 08/09/2018	THIS DOCUMENT ORIGINALLY ISSUED AND SEALED BY: MEME D. BUSCEMI 037863 ON 08/09/2018
THIS DOCUMENT IS ONLY CERTIFIED AS TO THE REVISIONS.	THIS DOCUMENT IS ONLY CERTIFIED AS TO THE REVISIONS.
DOCUMENT NOT CONSIDERED FINAL UNLESS ALL SIGNATURES COMPLETED	
ROADWAY DESIGN ENGINEER SEAL 024641 TATTA L. WHITE	HYDRAULICS ENGINEER SEAL 043912 Matthew J. York, PE
1/7/2021	1/6/2021

FOR -L- PROFILE SEE SHEET 31
FOR -Y11C- PROFILE SEE SHEET 36
FOR -Y12- PROFILE SEE SHEET 36
FOR -DRW8- PROFILE SEE SHEET 38
FOR -DRW9- PROFILE SEE SHEET 39
FOR -DRW10- PROFILE SEE SHEET 39
FOR -DRW11- PROFILE SEE SHEET 39
FOR -DRW23- PROFILE SEE SHEET 40
FOR CONC. ISLAND DETAILS SEE SHEET 2B-6

★ PROPOSED SIGNAL
PAVEMENT REMOVAL

MATCHLINE -L- STA. 190+00.00 SEE SHEET 17

MATCHLINE -Y12- STA. 14+60.00 SEE THIS SHEET

MATCHLINE -L- STA. 203+00.00 SEE SHEET 19

DRAKE ROBERTSON AND WIFE SONIA ROBERTSON
DB 4248 PG 440
PB 66 PG 253

Prepared by
URS
URS Corporation - North Carolina
1600 Perimeter Park Drive
Morrisville, North Carolina 27560
TELEPHONE: (919) 461-1100 FAX: (919) 461-1415
NC L103462 - C-2243

RUSSELL B. RAGLAND AND WIFE RHONDA G. RAGLAND
DB 3375 PG 834
PB 66 PG 253

JANA GUERTLER
DB 4508 PG 535
PB 65 PG 473

PAMELA DENISE FLOWERS
DB 4142 PG 606
PB 65 PG 473

JIMMY ROGERS FLOWERS
DB 1507 PG 275
PB 61 PG 305

REBECCA D FLOWERS
DB 1789 PG 784

PEGGY ANNE FLOWERS
DB 2836 PG 5
PB 57 PG 310

PEGGY ANNE FLOWERS
DB 2836 PG 5
PB 57 PG 310

PEGGY ANNE FLOWERS
DB 2836 PG 5
PB 57 PG 310

PEGGY FLOWERS BENSON
DB 1564 PG 901
PB 70 PG 289
PB 31 PG 297

ALLIE TEW- DECEASED
EST. 05E1387-WAKE CO.
DB 1564 PG 904
PB 31 PG 297