
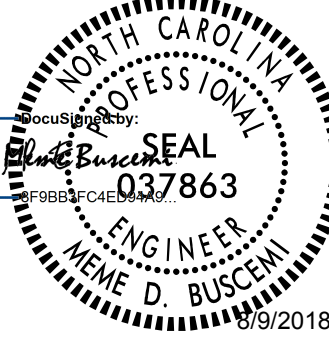
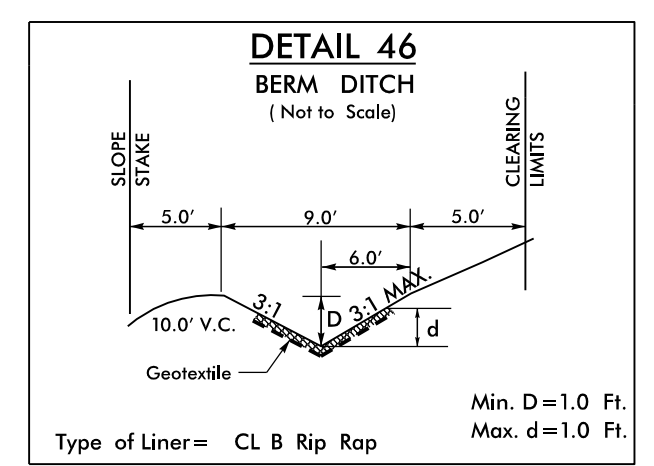


8/17/09

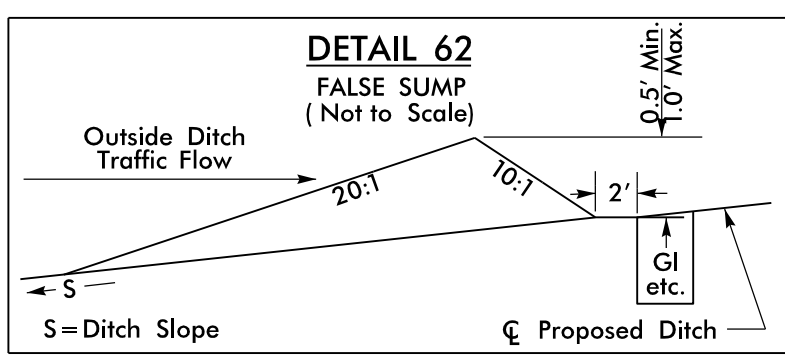
Prepared by  
**URS**  
 URS Corporation - North Carolina  
 1600 Perimeter Park Drive  
 Morrisville, North Carolina 27560  
 TELEPHONE 1 919 461-1100 FAX 1 919 461-1415  
 NC LICENSE # C-2243

PROJECT REFERENCE NO. <b>R-3825B</b>	SHEET NO. <b>14</b>
RW SHEET NO.	
ROADWAY DESIGN ENGINEER	HYDRAULICS ENGINEER
 EDWARD STEVEN CULL PROFESSIONAL ENGINEER NO. 12470 8/9/2018	 W. GLENN EDENS, JR. PROFESSIONAL ENGINEER NO. 037863 8/9/2018
DOCUMENT NOT CONSIDERED FINAL UNLESS ALL SIGNATURES COMPLETED	

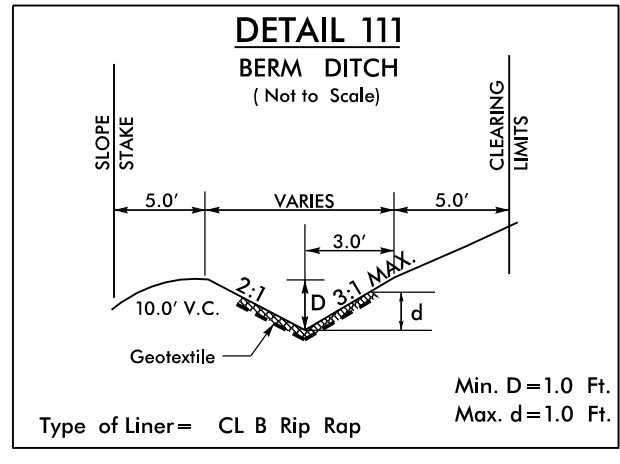
NAD 83/2011



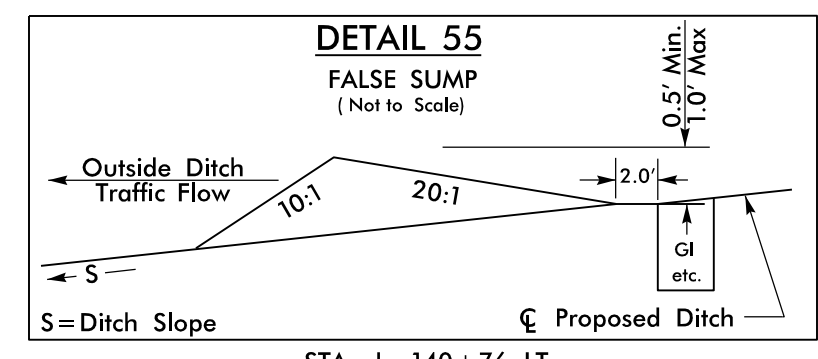
FROM -L- STA. 141+60 LT TO -L- STA. 141+85 LT  
 FROM -L- STA. 142+00 RT TO -L- STA. 143+25 RT  
 FROM -L- STA. 143+25 RT TO -L- STA. 144+20 RT  
 FROM -L- STA. 144+70 RT TO -L- STA. 146+00 RT



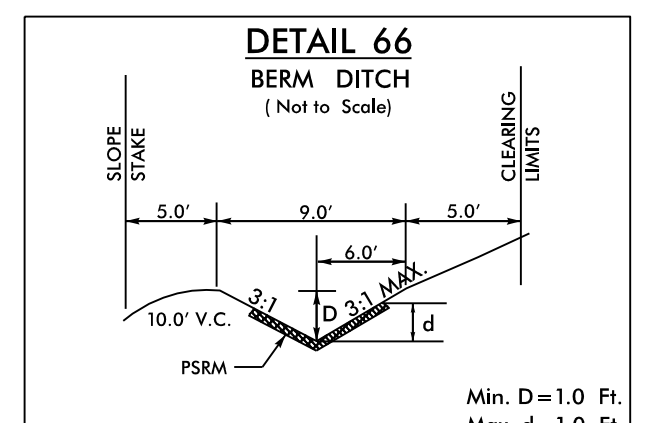
FROM -L- STA. 141+14 RT TO -L- STA. 143+06 RT



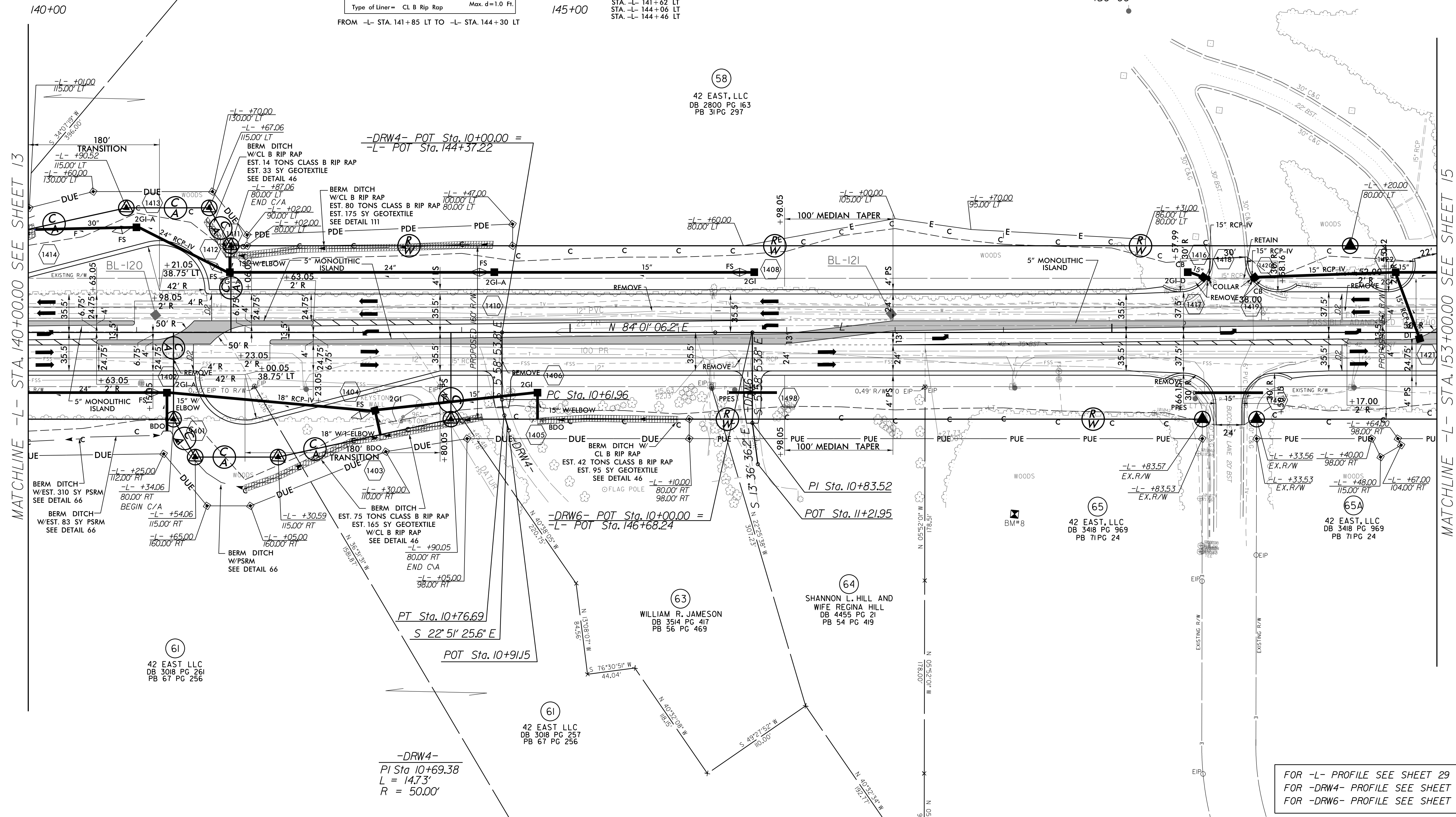
FROM -L- STA. 141+85 LT TO -L- STA. 144+30 LT



FROM -L- STA. 140+76 LT TO -L- STA. 141+62 LT  
 FROM -L- STA. 144+06 LT TO -L- STA. 144+46 LT



FROM -L- STA. 140+50 RT TO -L- STA. 142+00 RT



MATCHLINE -L- STA. 140+00.00 SEE SHEET 13

MATCHLINE -L- STA. 153+00.00 SEE SHEET 15

FOR -L- PROFILE SEE SHEET 29  
 FOR -DRW4- PROFILE SEE SHEET 38  
 FOR -DRW6- PROFILE SEE SHEET 38

R:\2008\0818\p\_o\13825b\_rdu\_psh14.dgn  
 8/17/09 10:58:14 AM