

8/17/19

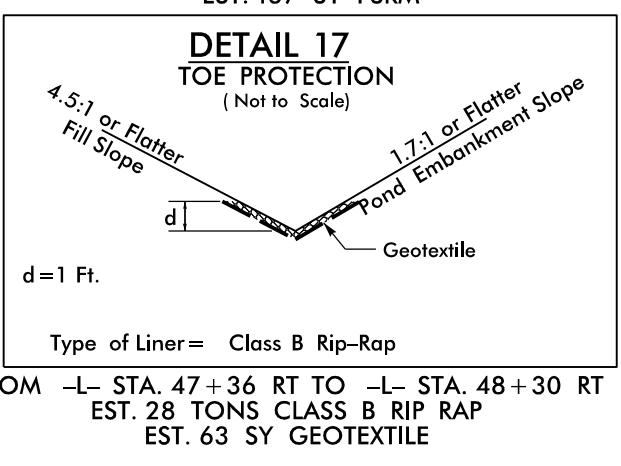
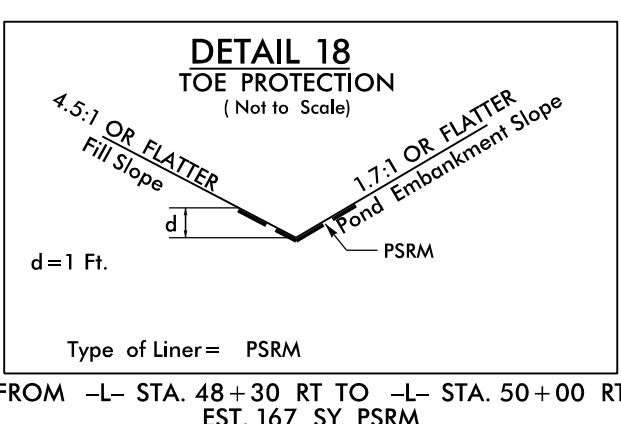
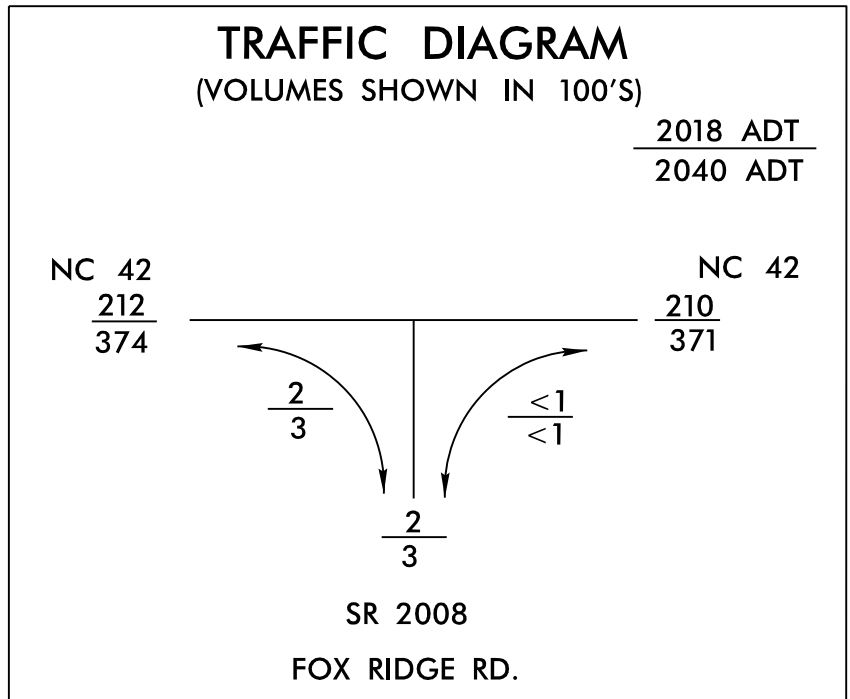
Prepared by
URS
URS Corporation - North Carolina
1600 Perimeter Park Drive
Morrisville, North Carolina 27560
TELEPHONE 1 919 461 1100 FAX 1 919 461 1415
NC L12026E - C-2243

PROJECT REFERENCE NO. R-3825B		SHEET NO. 6	
RW SHEET NO.			
ROADWAY DESIGN ENGINEER		HYDRAULICS ENGINEER	
DOCUMENT NOT CONSIDERED FINAL UNLESS ALL SIGNATURES COMPLETED			

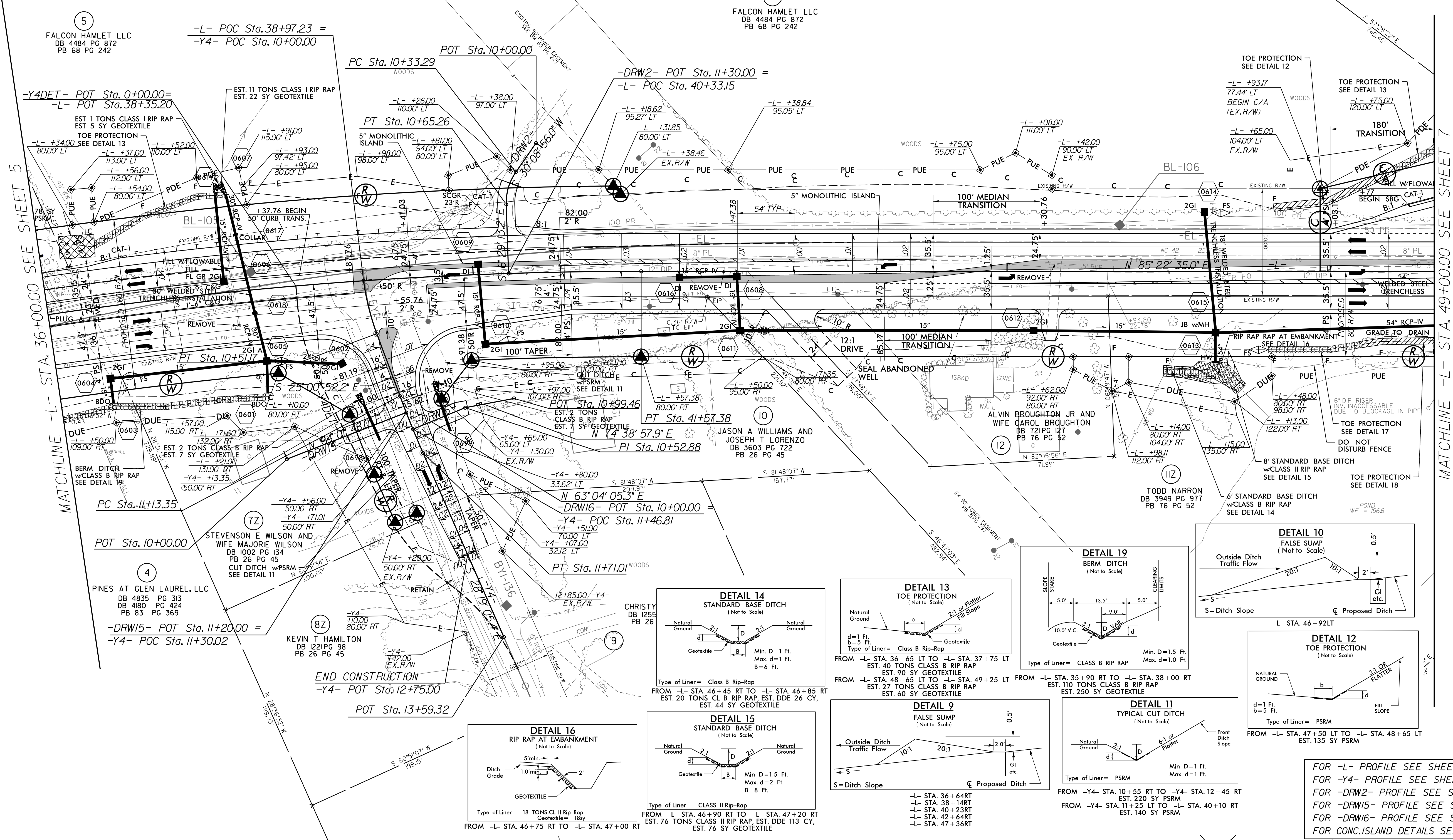
-L- NC 42
 PI Sta 37+23.14
 $\Delta = 13^{\circ}05'00.0"$ (RT)
 $D = 129^{\circ}59.6'$
 $L = 872.29'$
 $T = 438.05'$
 $R = 3,820.00'$
 $e = 4'$
 Runoff = 216'

-DRW2-
 PI Sta 10+49.85
 $L = 31.97'$
 $R = 50.00'$

-Y4- FOX RIDGE RD
 PI Sta 10+25.69 PI Sta 11+42.18
 $\Delta = 12^{\circ}41'31.1"$ (LT) $\Delta = 3^{\circ}18'13.3"$ (LT)
 $D = 24^{\circ}48'12.1"$ $D = 5^{\circ}43'46.5"$
 $L = 51.17'$ $L = 57.66'$
 $T = 25.69'$ $T = 28.84'$
 $R = 231.00'$ $R = 1,000.00'$

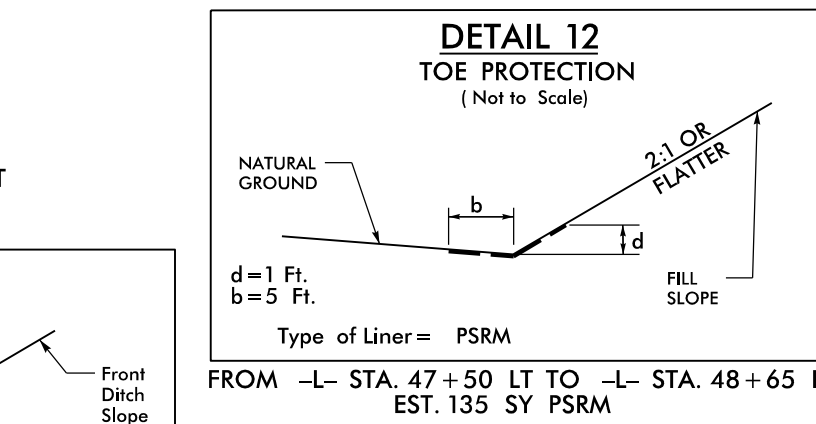
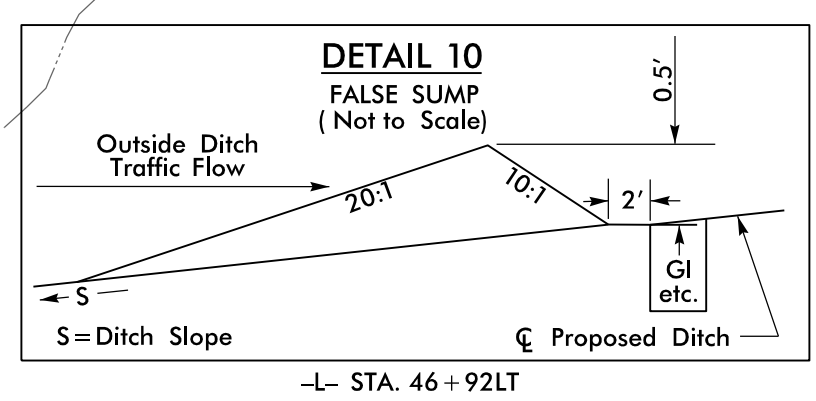
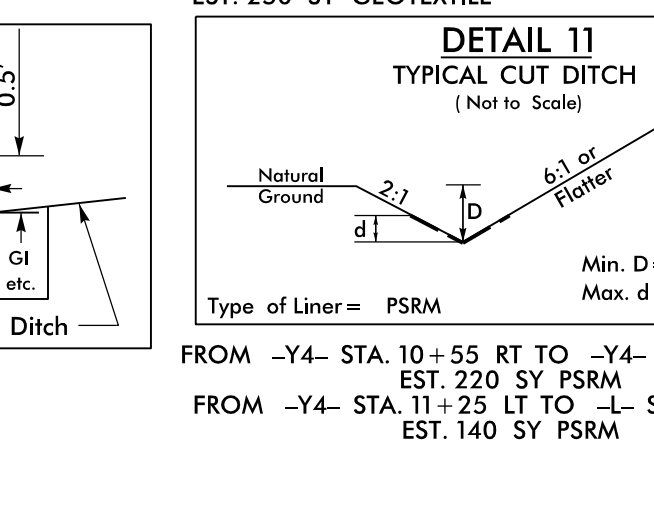
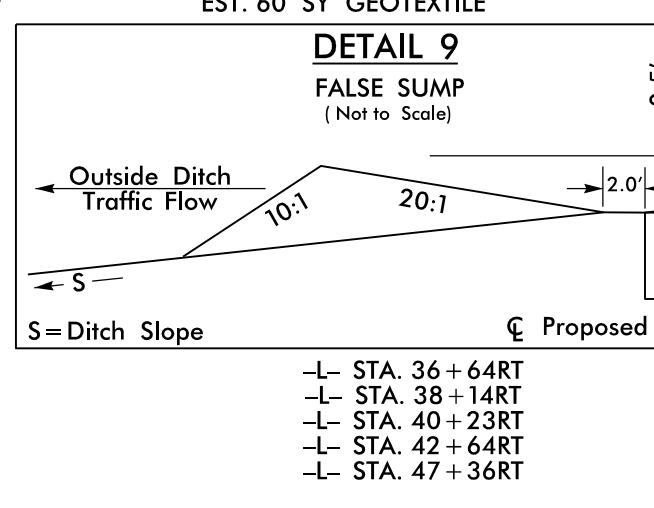
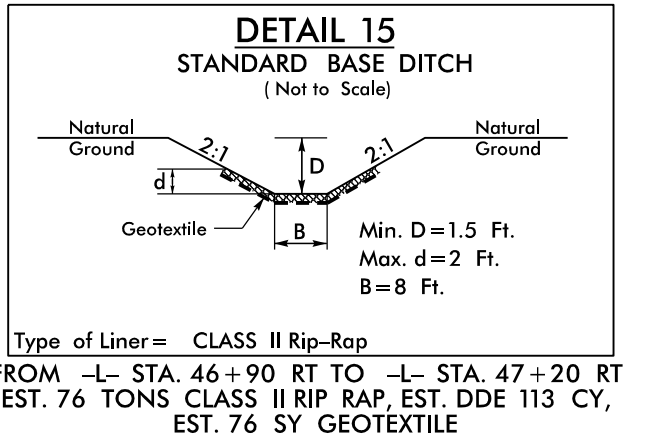
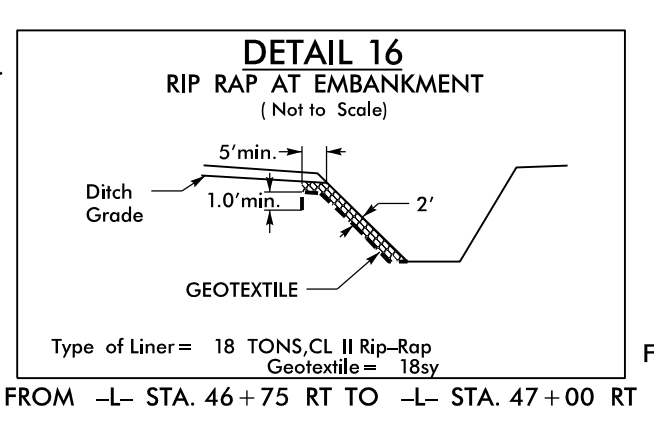


NAD 83/2011



MATCHLINE -L- STA. 36+00.00 SEE SHEET 5

MATCHLINE -L- STA. 49+00.00 SEE SHEET 7



FOR -L- PROFILE SEE SHEET 25
 FOR -Y4- PROFILE SEE SHEET 33
 FOR -DRW2- PROFILE SEE SHEET 38
 FOR -DRW15- PROFILE SEE SHEET 39
 FOR -DRW16- PROFILE SEE SHEET 40
 FOR CONG. ISLAND DETAILS SEE SHEET 2B-4

8/17/2018 P:\o\193825B_r-dj\psb06.dgn