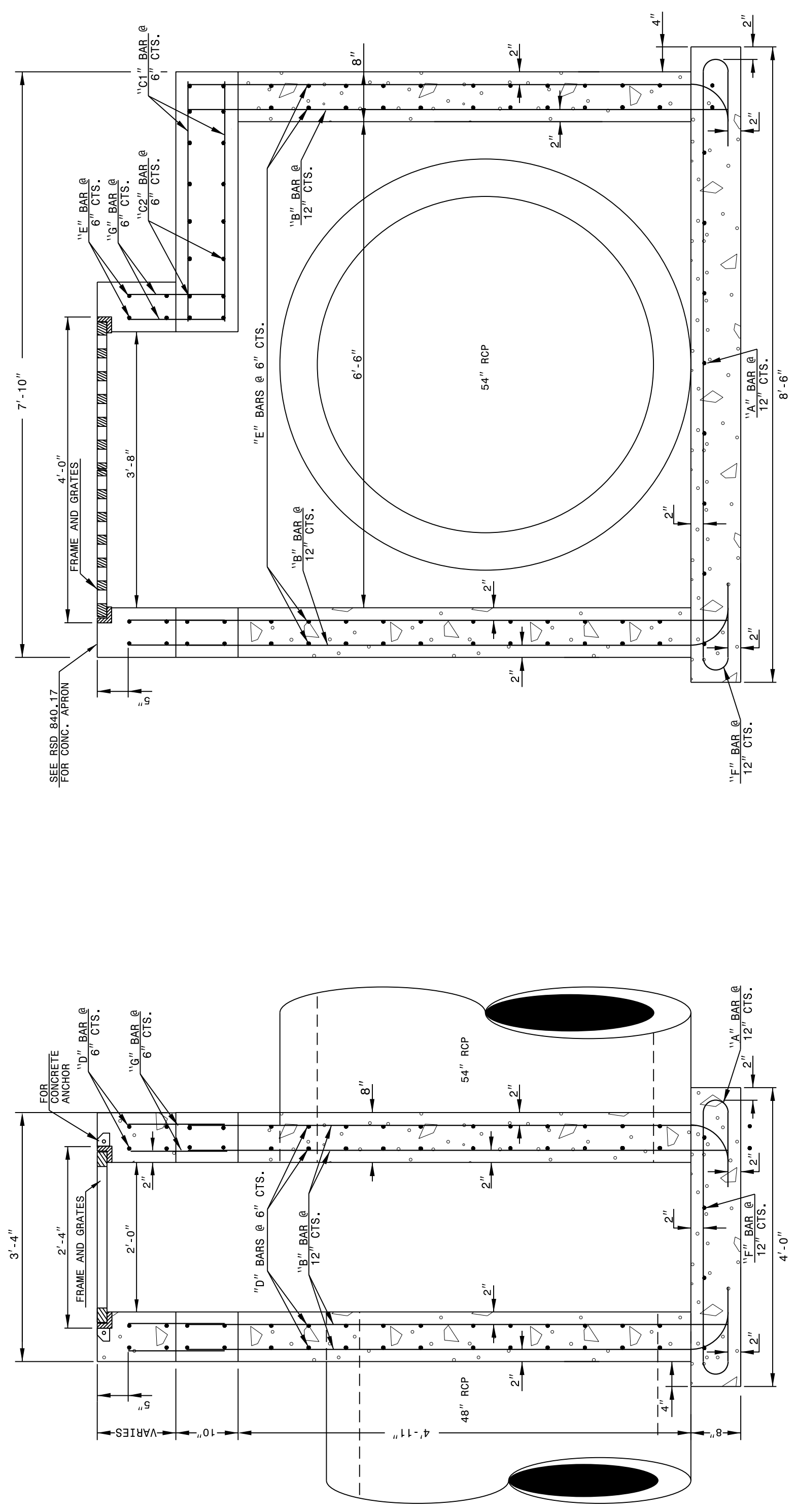


15-FEB-2018 10:11 AM
 S:\Contracts\Contractors\Special Details\Joverton\840d35 TB01 Up to 54in.dgn
 Joverton AT: USD-292595

STATE OF NORTH CAROLINA
 DEPT. OF TRANSPORTATION
 DIVISION OF HIGHWAYS
 RALEIGH, N.C.

ENGLISH DETAIL DRAWING FOR
TRAFFIC BEARING GRATED INLET
 FOR PIPES UP TO 54"

SHEET 1 OF 2
840D35



SECTION X-X

SECTION Y-Y

GENERAL NOTES:
 -BUILD WITH CLASS 'AA' CONCRETE
 -CHAMFER ALL EXPOSED CONCRETE CORNERS 3".
 -USE FORMS TO CONSTRUCT THE BOTTOM SLAB.
 -PIPE ANCHORS IN THE BASE, FOLLOW CONSTRUCTION PRACTICES SHOWN IN THE BASE, DRAWING 840.00.
 -PRECAST UNITS CONCRETE MAY BE USED IN LIEU CAST IN PLACE CONCRETE.
 -REFERENCE STD. DWG. 840.25 FOR FRAME ANCHORAGE.
 -FRAME AND GRATES OVER RCP SHALL BE DIRECTED BY STD. DWG 840.66.
 -FRAME AND GRATES ARE SEPARATE CONTRACT ITEM.

NOTES:
 -HORIZONTAL (UP TO 10" MAX.) AND VERTICAL (UP TO 20" MAX.) DIMENSIONS MAY BE ADJUSTED AS THE FIELD CONDITIONS AND/OR ALTERNATE DESIGNS REQUIRE.
 -ALL ADJUSTMENTS ARE TO BE MADE AS DIRECTED BY THE ENGINEER.

STATE OF NORTH CAROLINA
 DEPT. OF TRANSPORTATION
 DIVISION OF HIGHWAYS
 RALEIGH, N.C.

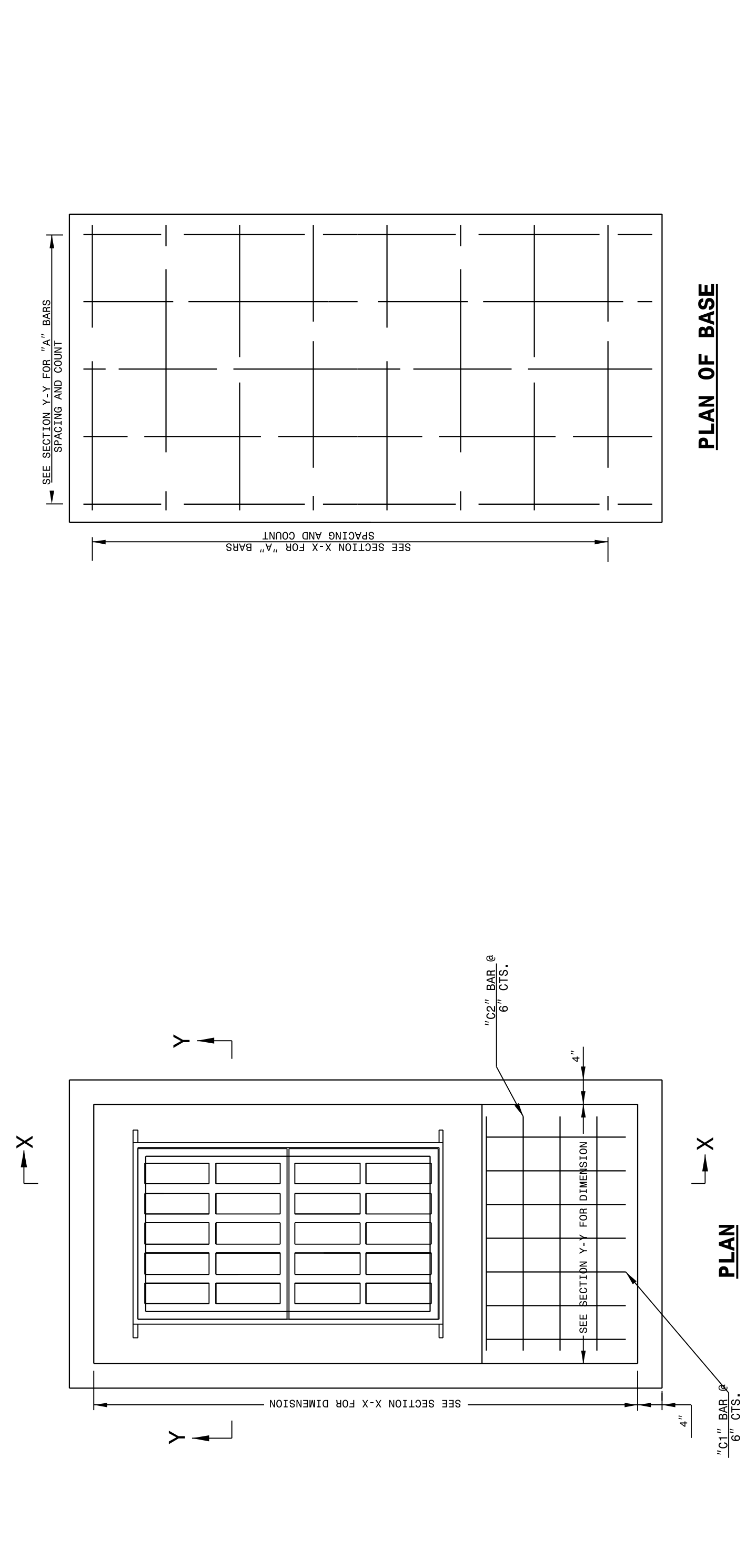
ENGLISH DETAIL DRAWING FOR
TRAFFIC BEARING GRATED INLET
 FOR PIPES UP TO 54"

SHEET 1 OF 2
840D35

STATE OF NORTH CAROLINA
 DEPT. OF TRANSPORTATION
 DIVISION OF HIGHWAYS
 RALEIGH, N.C.

ENGLISH DETAIL DRAWING FOR
TRAFFIC BEARING GRATED INLET
 FOR PIPES UP TO 54"

SHEET 2 OF 2
840D35

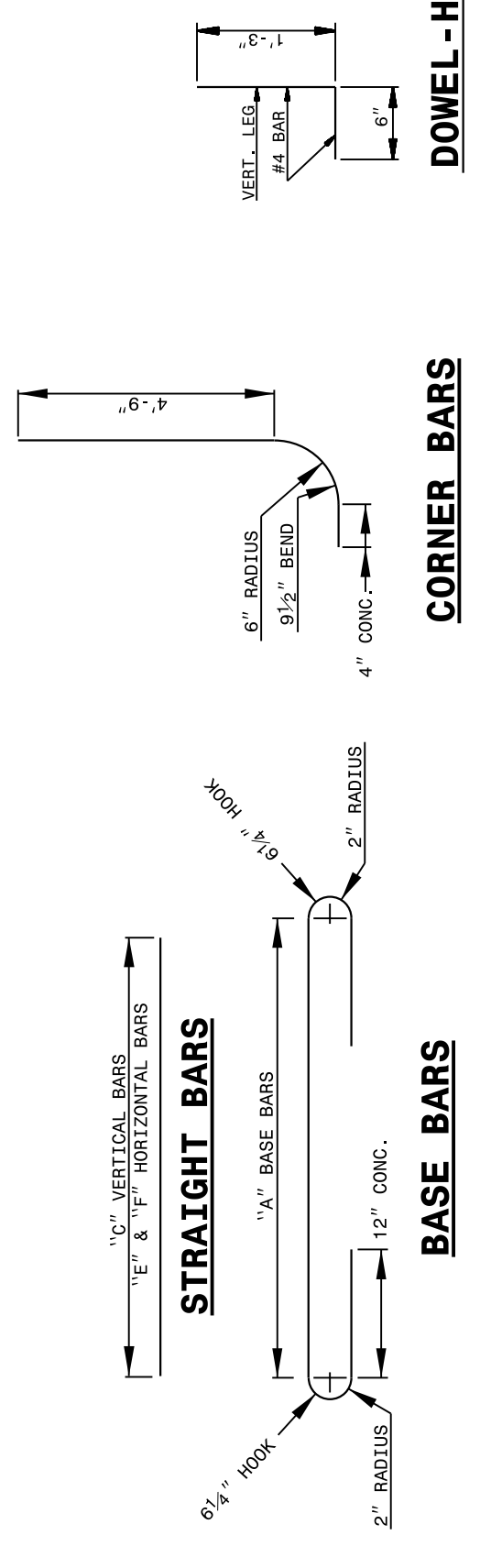


PLAN OF BASE

BILL OF MATERIALS

BAR	SIZE	LENGTH	QUANTITY	WEIGHT
A	#2	5'-0"	42	47
B	#2	7'-6"	104	790
C1	#3	3'-4"	9	32
C2	#3	3'-0"	6	19
D	#5	3'-6"	48	376
E	#5	3'-0"	48	151
F	#5	1'-0"	4	42
G	#5	1'-6"	104	181
REFIN. STEEL (TOTAL WEIGHT LBS.)				1626
CONCRETE TOTAL (CU. YDS.) CLASS 'AA'				5.1
NO DEDUCTIONS HAVE BEEN MADE TO ACCOMMODATE PIPES				

FOR EVERY 1 FOOT OF RISER USE 0.41 CU. YDS CONCRETE AND 390 LBS STEEL.



DOWEL-L-H

CORNER BARS

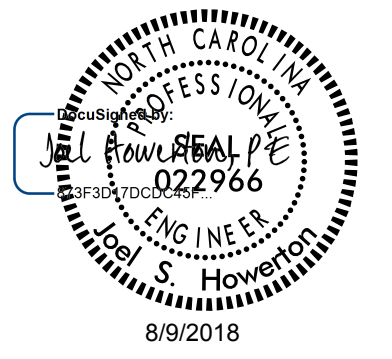
STRAIGHT BARS

BASE BARS

STATE OF NORTH CAROLINA
 DEPT. OF TRANSPORTATION
 DIVISION OF HIGHWAYS
 RALEIGH, N.C.

ENGLISH DETAIL DRAWING FOR
TRAFFIC BEARING GRATED INLET
 FOR PIPES UP TO 54"

SHEET 2 OF 2
840D35



DOCUMENT NOT CONSIDERED FINAL
 UNLESS ALL SIGNATURES COMPLETED

CONTRACT STANDARDS AND DEVELOPMENT UNIT
 Office 919-707-6950 FAX 919-250-4119

SEE PLATE FOR TITLE

ORIGINAL BY: K. KEMPF DATE: 03-03-2015
 MODIFIED BY: DATE:
 CHECKED BY: DATE:
 FILE SPEC.: kkempfvenglish\B5121-B5317_840d35_54_TB261.dgn