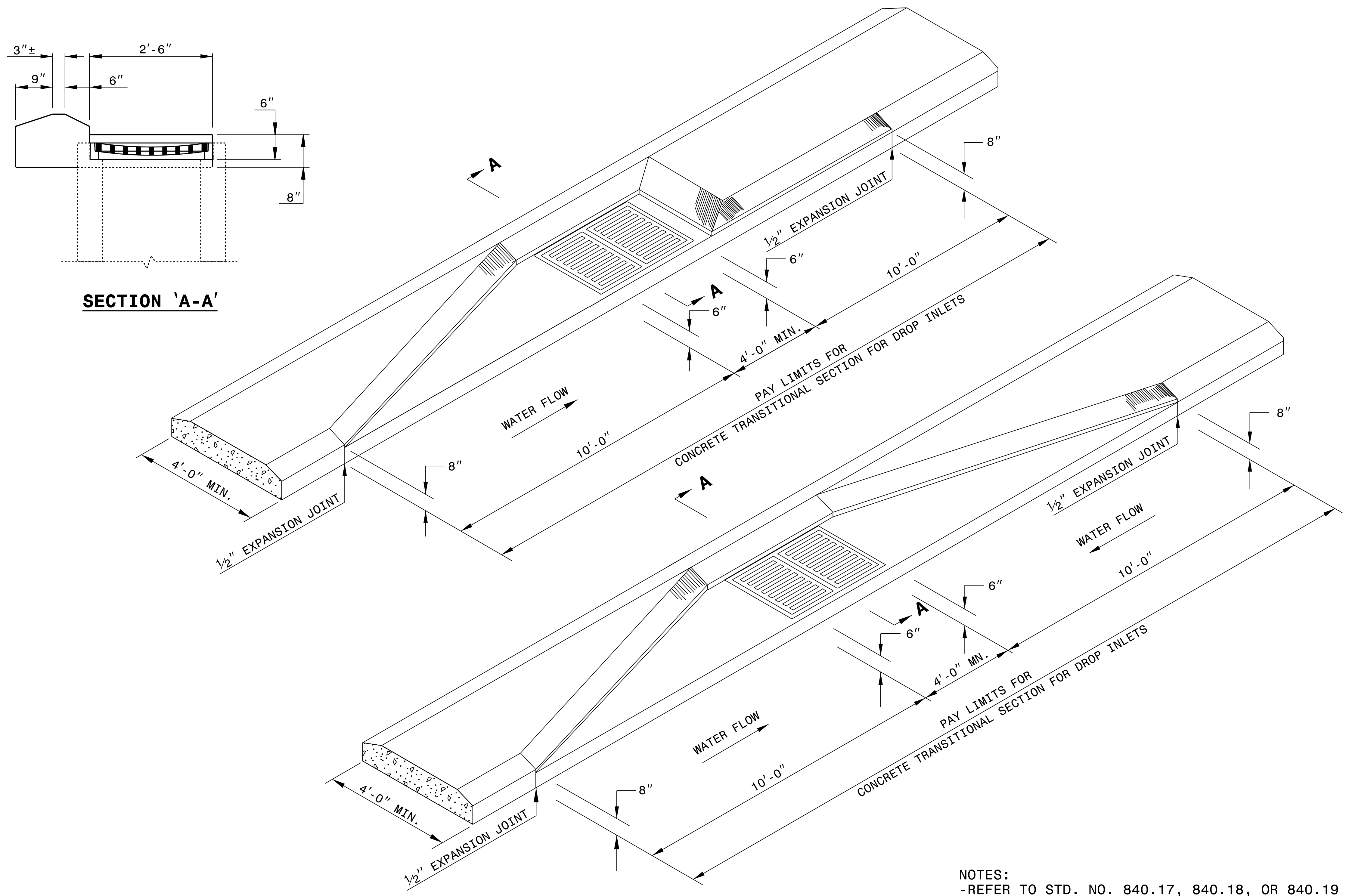


STATE OF  
NORTH CAROLINA  
DEPT. OF TRANSPORTATION  
DIVISION OF HIGHWAYS  
RALEIGH, N.C.

ENGLISH DETAIL DRAWING FOR  
**METHOD FOR PLACEMENT OF  
DROP INLETS IN CONCRETE ISLANDS**

SHEET 1 OF 1  
**852D06**



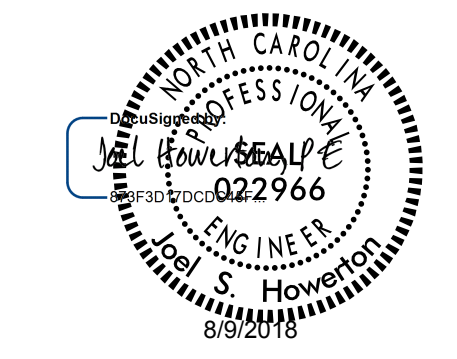
NOTES:  
-REFER TO STD. NO. 840.17, 840.18, OR 840.19 FOR DRAINAGE STRUCTURE.  
-REFER TO STD. NO. 840.20 OR 840.29 FOR GRATE AND FRAME.

STATE OF  
NORTH CAROLINA  
DEPT. OF TRANSPORTATION  
DIVISION OF HIGHWAYS  
RALEIGH, N.C.

ENGLISH DETAIL DRAWING FOR  
**METHOD FOR PLACEMENT OF  
DROP INLETS IN CONCRETE ISLANDS**

SHEET 1 OF 1  
**852D06**

06-MAR-2018 10:58  
S:\Contracts\Projects\Spacial\_Details\kkempf\english\852D0601.dgn  
Jpower ton AT\_CSD-252595



DOCUMENT NOT CONSIDERED FINAL  
UNLESS ALL SIGNATURES COMPLETED

**CONTRACT STANDARDS  
AND DEVELOPMENT UNIT**  
Office 919-707-6950 FAX 919-250-4119

**SEE TITLE PLATE**

ORIGINAL BY: KKEMPF DATE: 8/2/10  
MODIFIED BY: DATE:  
CHECKED BY: DATE:  
FILE SPEC.: KKEMPF\ENGLISH\852D0601.DGN