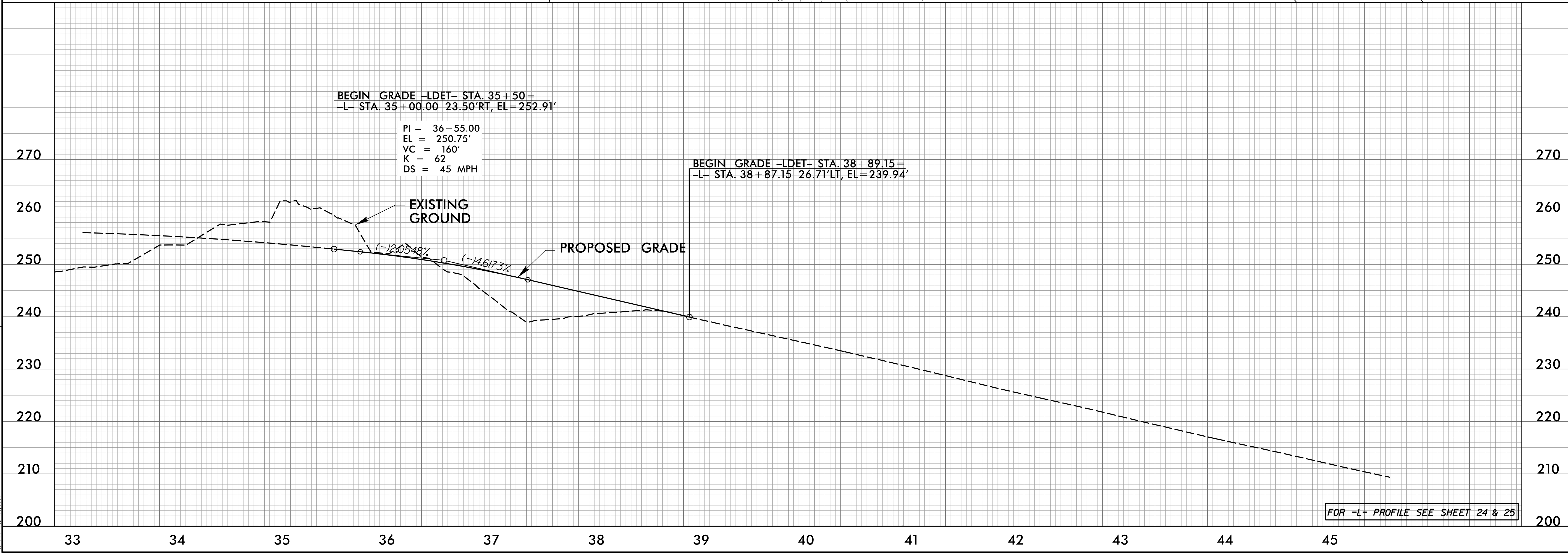
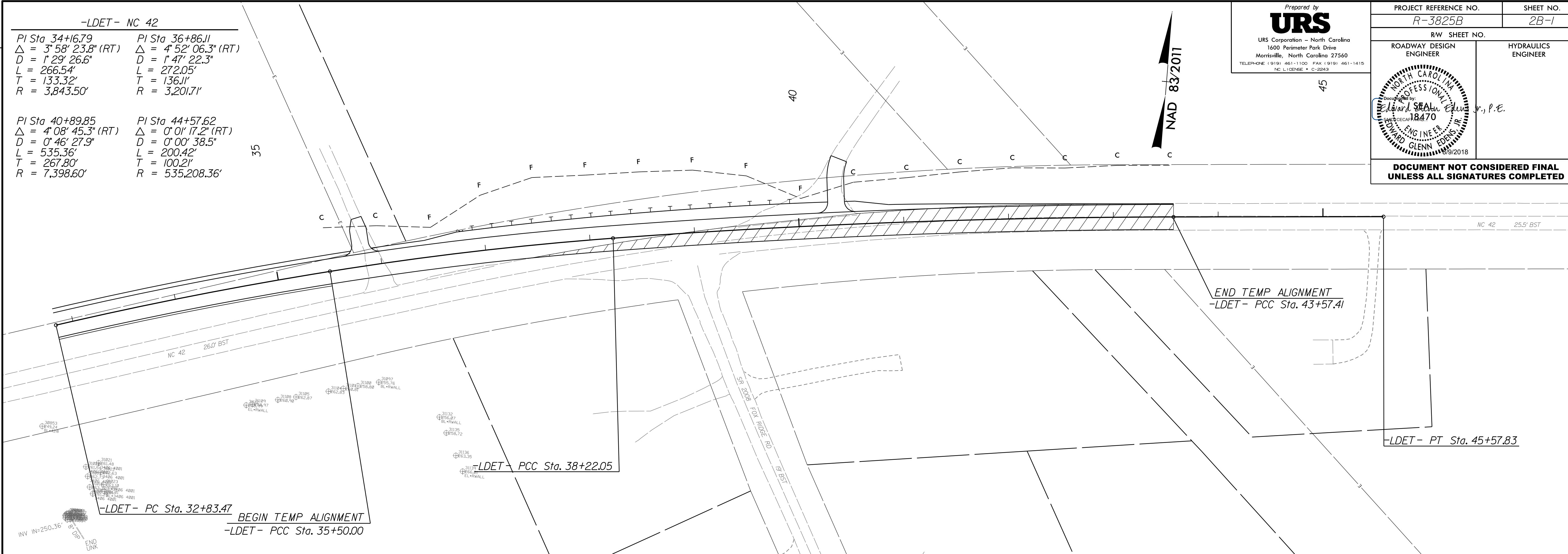


8/17/19



8/9/2018
R:\Roadway\Proj\NR3825b_rdy_psh02B.1.dgn
Travis Hedler

REVISIONS

-LDET- NC 42

PI Sta 34+16.79 Δ = 3° 58' 23.8" (RT) D = 1' 29' 26.6" L = 266.54' T = 133.32' R = 3,843.50'	PI Sta 36+86.11 Δ = 4° 52' 06.3" (RT) D = 1' 47' 22.3" L = 272.05' T = 136.11' R = 3,201.71'
PI Sta 40+89.85 Δ = 4° 08' 45.3" (RT) D = 0' 46' 27.9" L = 535.36' T = 267.80' R = 7,398.60'	PI Sta 44+57.62 Δ = 0° 01' 17.2" (RT) D = 0' 00' 38.5" L = 200.42' T = 100.21' R = 535,208.36'

Prepared by
URS
URS Corporation - North Carolina
1600 Perimeter Park Drive
Morrisville, North Carolina 27560
TELEPHONE 1 919 461-1100 FAX 1 919 461-1415
NC LICENSE # C-22843

PROJECT REFERENCE NO. R-3825B	SHEET NO. 2B-1
R/W SHEET NO.	HYDRAULICS ENGINEER
ROADWAY DESIGN ENGINEER	
<p>DOCUMENT NOT CONSIDERED FINAL UNLESS ALL SIGNATURES COMPLETED</p>	