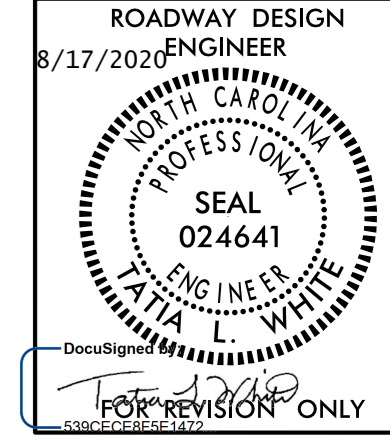
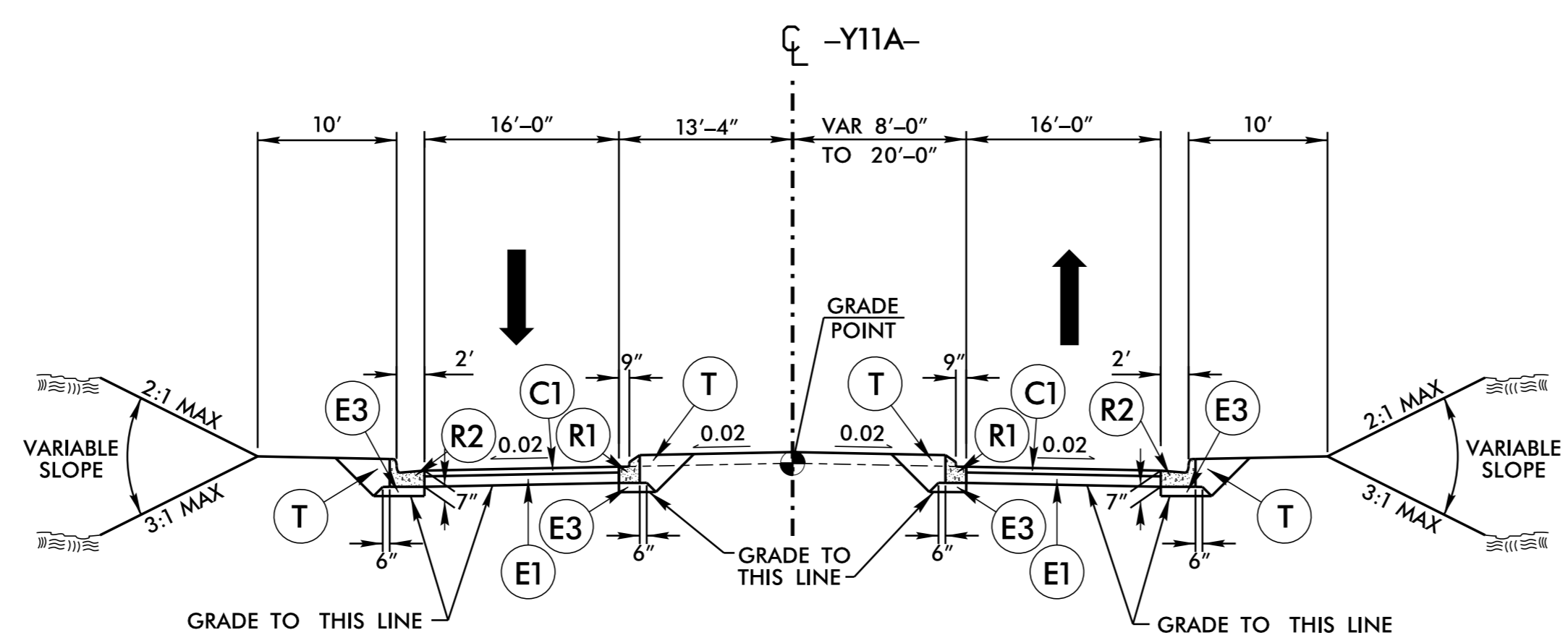


**DOCUMENT NOT CONSIDERED FINAL UNLESS ALL SIGNATURES COMPLETED**



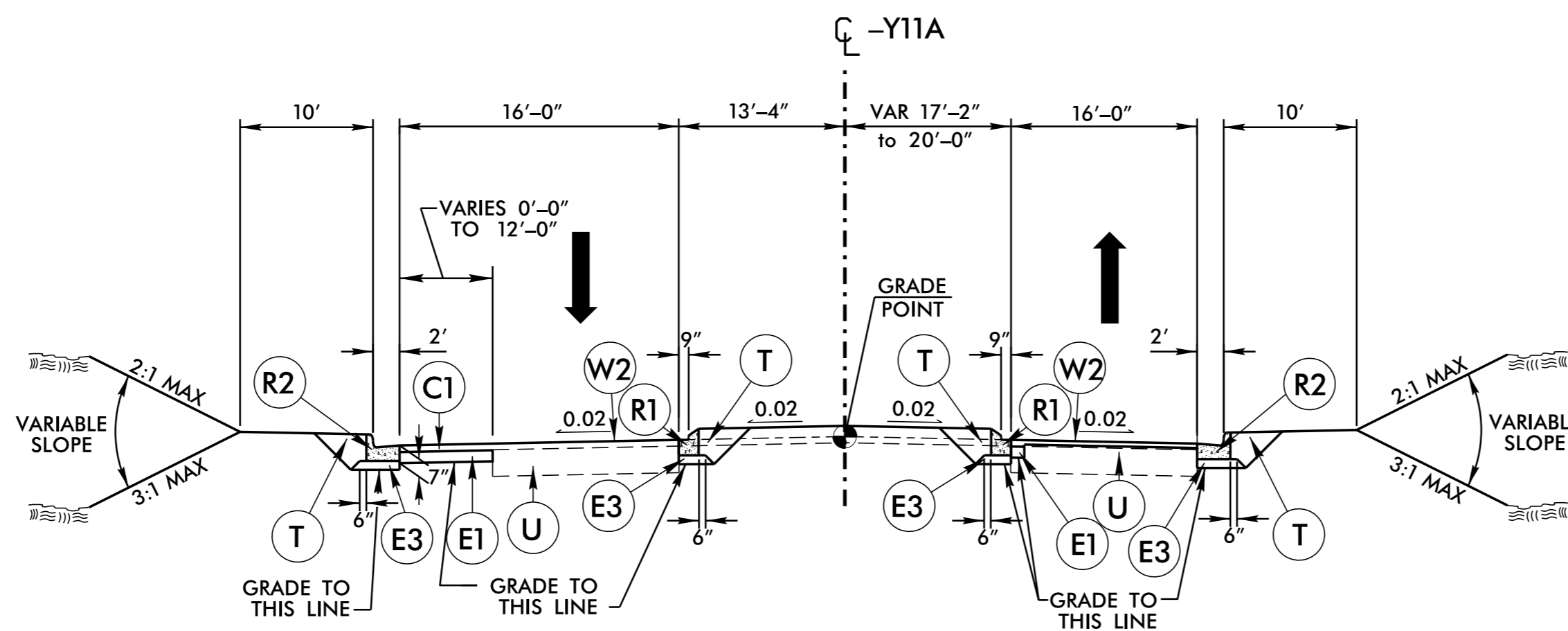
PAVEMENT SCHEDULE FINAL PAVEMENT DESIGN	
C1	2 1/2" S9.5B
C2	VAR. S9.5B
C3	1 1/2" S9.5C
C4	3" S9.5C
C5	VAR. S9.5C
D1	2 1/2" I19.0C
D2	4" I19.0C
D3	VAR. I19.0C
E1	4 1/2" B25.0C
E2	5" B25.0C
E3	4" B25.0C
E4	5 1/2" B25.0C
E5	VAR. B25.0C
J1	6" ABC
J2	8" ABC
K	K LIME OR CEMENT
N	GEOTEXTILE PVMT. STAB.
P	PRIME COAT
R1	1'-6" C & G
R2	2'-6" C & G
R3	2'-9" C & G
R4	EXPRESSWAY GUTTER
R5	SHOULDER BERM GUTTER
R6	5" CONC. ISLAND
S	4" CONC. SIDEWALK
T	EARTH MATERIAL
U	EXISTING PAVEMENT
W1	WEDGING DETAIL No. 1
W2	WEDGING DETAIL No. 2

NOTE: PAVEMENT EDGE SLOPES ARE 1:1 UNLESS SHOWN OTHERWISE  
 TRENCH SLOPES ARE 1:1 UNLESS SHOWN OTHERWISE



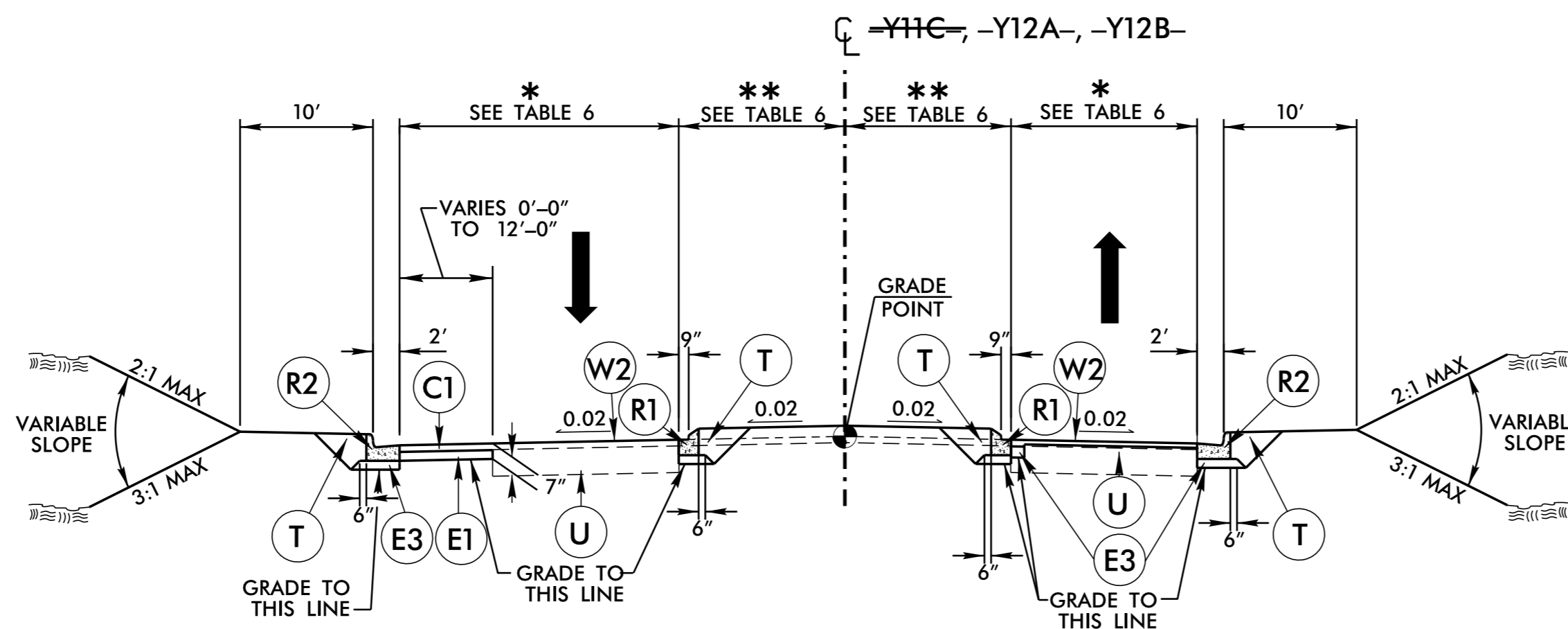
**TYPICAL SECTION NO. 14**

USE TYPICAL SECTION NO. 14  
 AT THE FOLLOWING LOCATION:  
 -Y11A- STA. 10+49.51 TO STA. 10+91.41



**TYPICAL SECTION NO. 15**

USE TYPICAL SECTION NO. 15  
 AT THE FOLLOWING LOCATION:  
 -Y11A- STA. 10+91.41 TO STA. 11+67.96



**TYPICAL SECTION NO. 16**

USE TYPICAL SECTION NO. 16  
 AT THE FOLLOWING LOCATION:  
 -Y11C- STA. 10+48.39 TO STA. 11+56.79  
 -Y12A- STA. 12+25.00 TO STA. 12+82.39  
 -Y12B- STA. 10+41.28 TO STA. 10+99.57

LINE	TABLE 6	
	*	**
-Y11C-	RT VAR 16'-0" TO 14'-0" LT VAR 16'-0" TO 14'-0"	RT 6'-0" LT 6'-0"
-Y12A-	RT 24' (LT, THROUGH RT) LT 18'	RT 4'-6" LT 10'-6"
-Y12B-	RT 25'-11" LT 24'-0"	RT 13'-0" LT 13'-0"

REVISIONS  
 02/19/2020 - CONSTRUCTION REVISION: REMOVED -Y11C- STATION RANGES FROM TYPICAL SECTION NO. 16. HN  
 08/17/2020 - CONSTRUCTION REVISION: REVISED THE DIMENSIONS FOR -Y11A- ON TYPICAL SECTION NO. 16 FOR A LEFT TURN LANE. HN

17-AUG-2020\_09:37  
 P:\Roadway\Projects\173825B\_rdy\_tjpb.dgn