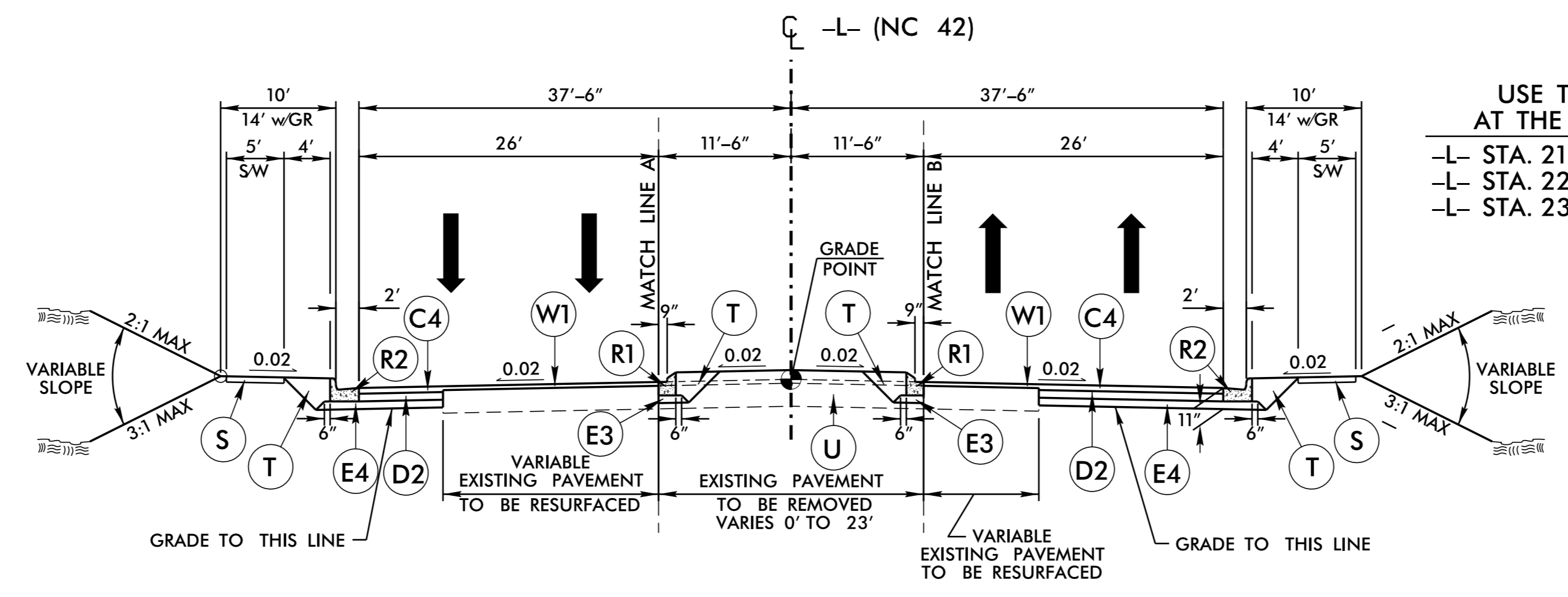


8/17/09

**PAVEMENT SCHEDULE
FINAL PAVEMENT DESIGN**

C1	2½" S9.5B
C2	VAR. S9.5B
C3	1½" S9.5C
C4	3" S9.5C
C5	VAR. S9.5C
D1	2½" I19.0C
D2	4" I19.0C
D3	VAR. I19.0C
E1	4½" B25.0C
E2	5" B25.0C
E3	4" B25.0C
E4	5½" B25.0C
E5	VAR. B25.0C
J1	6" ABC
J2	8" ABC
K	K LIME OR CEMENT
N	GEOTEXTILE PVMT. STAB.
P	PRIME COAT
R1	1'-6" C & G
R2	2'-6" C & G
R3	2'-9" C & G
R4	EXPRESSWAY GUTTER
R5	SHOULDER BERM GUTTER
R6	5" CONC. ISLAND
S	4" CONC. SIDEWALK
T	EARTH MATERIAL
U	EXISTING PAVEMENT
W1	WEDGING DETAIL No. 1
W2	WEDGING DETAIL No. 2

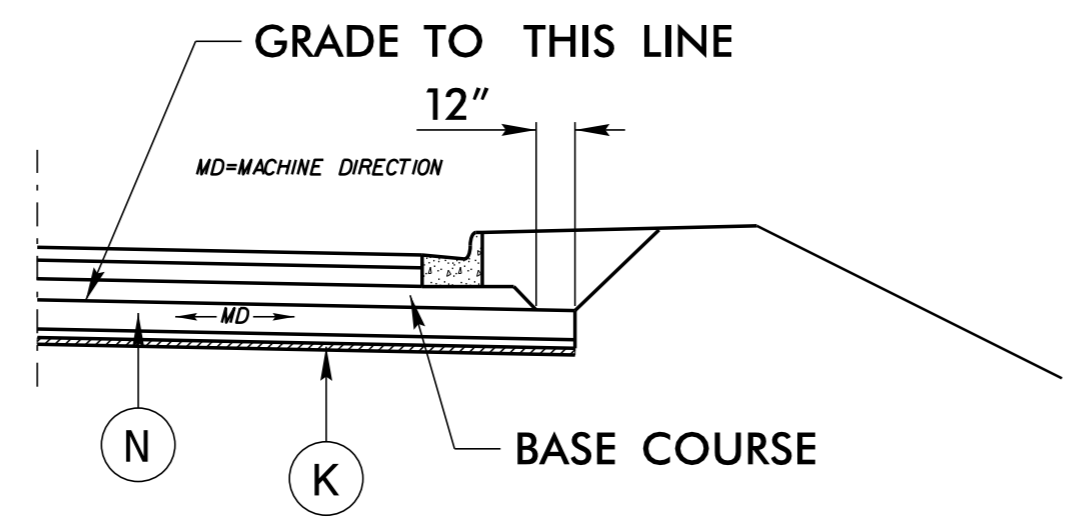
NOTE: PAVEMENT EDGE SLOPES ARE 1:1 UNLESS SHOWN OTHERWISE
TRENCH SLOPES ARE 1:1 UNLESS SHOWN OTHERWISE



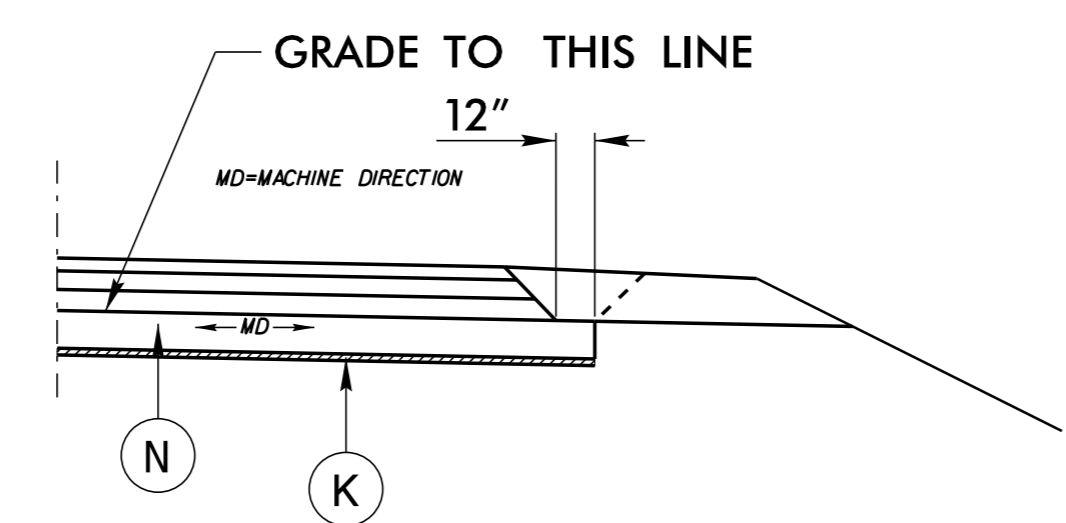
TYPICAL SECTION NO. 3

**USE TYPICAL SECTION NO. 3
AT THE FOLLOWING LOCATION:**

- L- STA. 216+29.03 TO STA. 216+44.00
- L- STA. 226+78.00 TO STA. 231+07.28
- L- STA. 236+59.28 TO STA. 240+84.98



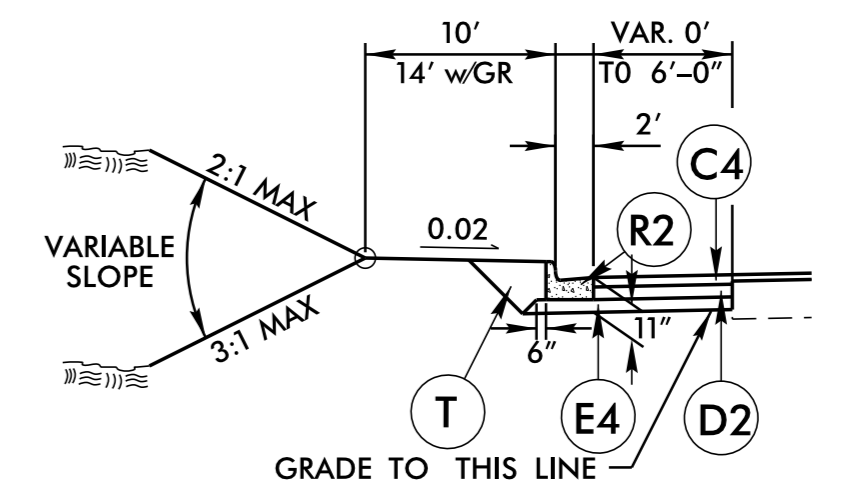
TYPICAL SECTION NO. 3A



TYPICAL SECTION NO. 3B

**GEOTEXTILE FOR PAVEMENT STABILIZATION
TYPICAL SECTION NO'S. 3A & 3B TO BE USED
IN CONJUNCTION WITH TYPICAL SECTION NO.
1, 7, & 17 AT THE FOLLOWING LOCATIONS:**

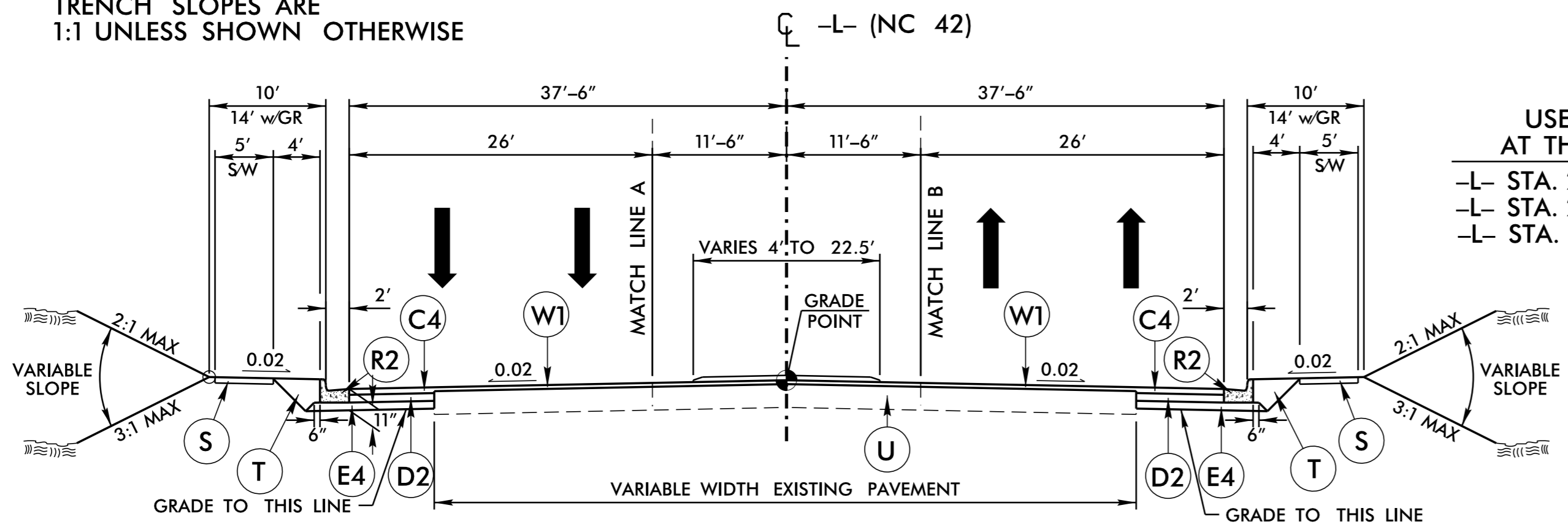
- L- STA. 24+00 TO STA. 29+50 LT
- L- STA. 37+00 TO STA. 39+00 LT
- L- STA. 48+75 TO STA. 50+25 LT
- L- STA. 48+75 TO STA. 49+75 RT
- L- STA. 57+75 TO STA. 62+50 RT
- L- STA. 66+25 TO STA. 67+25 RT
- L- STA. 105+00 TO STA. 108+50 LT
- L- STA. 107+00 TO STA. 109+00 RT
- L- STA. 112+75 TO STA. 115+25 RT
- L- STA. 127+25 TO STA. 129+00 LT, RT
- L- STA. 134+75 TO STA. 137+50 LT, RT
- L- STA. 155+00 TO STA. 158+00 LT, RT
- L- STA. 165+25 TO STA. 169+00 RT
- L- STA. 200+25 TO STA. 203+00 LT
- L- STA. 201+25 TO STA. 204+00 RT
- L- STA. 230+00 TO STA. 232+25 LT
- L- STA. 230+00 TO STA. 232+50 RT



NARROW WIDENING DETAIL

- L- STA. 16+50.00 TO STA. 18+50.00 LT
- L- STA. 22+50.00 TO STA. 23+00.00 RT
- L- STA. 164+00.00 TO STA. 164+50.00 LT
- L- STA. 174+50.00 TO STA. 176+50.00 LT
- L- STA. 248+00.00 TO STA. 260+00.00 RT
- Y6- STA. 11+00.00 TO STA. 16+50.00 RT
- Y8- STA. 10+50.00 TO STA. 11+00.00 RT
- Y13- STA. 14+83.74 TO STA. 15+00.00 LT
- Y13- STA. 18+50.00 TO STA. 19+00.00 RT

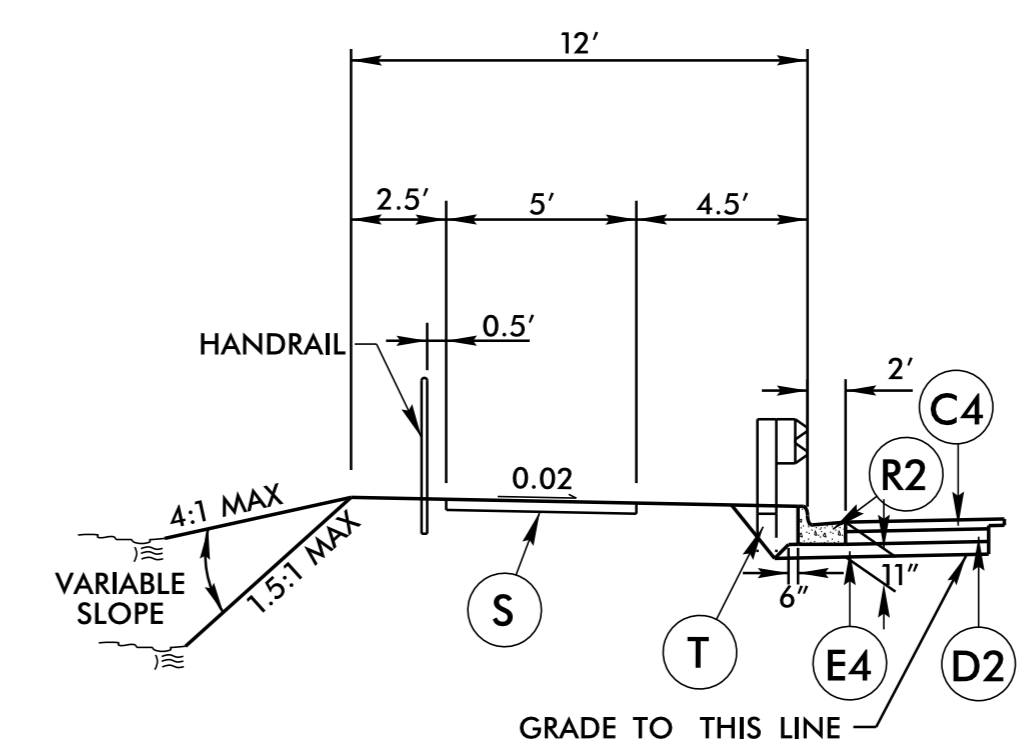
REVISIONS
01/08/2021-CONSTRUCTION REVISION: ADDED TYPICAL SECTION 4A. (HN)



TYPICAL SECTION NO. 4

**USE TYPICAL SECTION NO. 4
AT THE FOLLOWING LOCATION:**

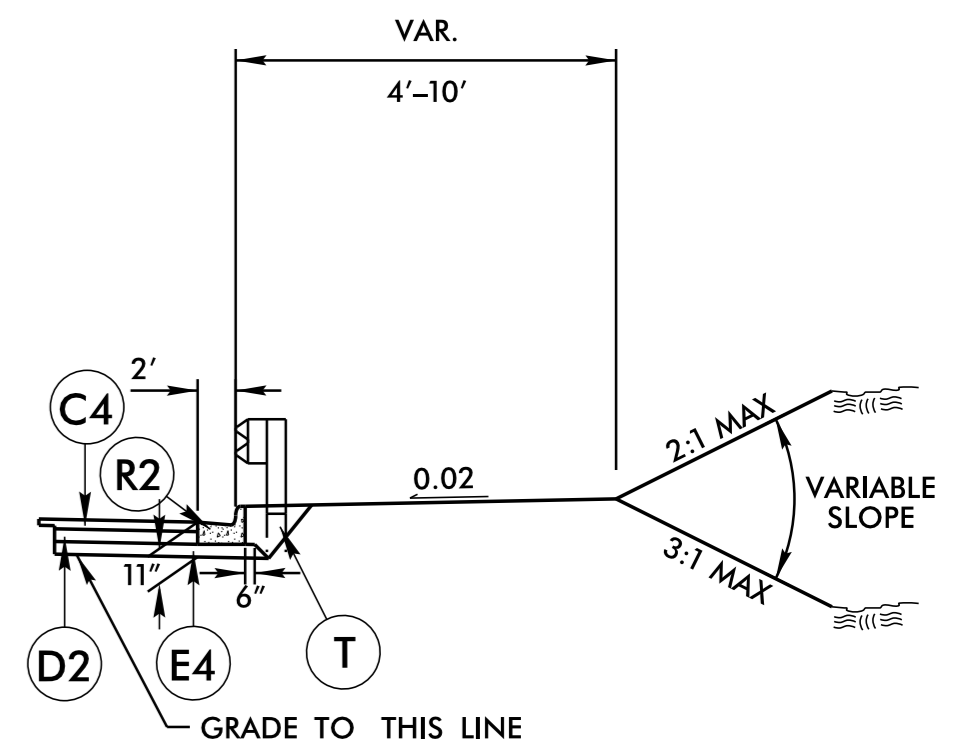
- L- STA. 216+44.00 TO STA. 226+78.00
- L- STA. 231+07.28 TO STA. 236+59.28
- L- STA. 240+84.98 TO STA. 249+75.21



TYPICAL SECTION NO. 4A

**USE TYPICAL SECTION NO. 4A IN CONJUNCTION
WITH TYPICAL SECTION NO. 4 AT:**

- L- STA. 241+75 TO STA. 242+60



TYPICAL SECTION NO. 4B

**TRANSITION BERM FROM 4' TO 10'
IN TYPICAL SECTION NO. 5**

**USE TYPICAL SECTION NO. 4B IN
CONJUNCTION WITH TYPICAL SECTION NO. 4
& 5 AT THE FOLLOWING LOCATIONS:**

- L- STA. 248+40.06 TO STA. 254+33 +/- RT.

Prepared by
URS
URS Corporation - North Carolina
1600 Perimeter Park Drive
Morrisville, North Carolina 27560
TELEPHONE (919) 461-1100 FAX (919) 461-1415
NC LICENSE # C-2243

PROJECT REFERENCE NO. <i>R-3825B</i>	SHEET NO. <i>2A-3</i>
RW SHEET NO.	
ROADWAY DESIGN ENGINEER	PAVEMENT DESIGN ENGINEER
NOT A CERTIFIED DOCUMENT AS TO THE ORIGINAL DOCUMENT BUT ONLY AS TO THE REVISIONS.	
THIS DOCUMENT ORIGINALLY ISSUED AND SEALED BY:	
EDWARD GLENN EDENS, JR.	18470 ON 08/17/2018
THIS DOCUMENT IS ONLY CERTIFIED AS TO THE REVISIONS.	
Clark S. Morrison	1/7/2021
DOCUMENT NOT CONSIDERED FINAL UNLESS ALL SIGNATURES COMPLETED	

ROADWAY DESIGN ENGINEER
NORTH CAROLINA PROFESSIONAL SEAL
024641
Clark S. Morrison
1/7/2021

06 JAN 2021 15:49
8:33 AM C:\P\2021\15-49
8:33 AM C:\P\2021\15-49