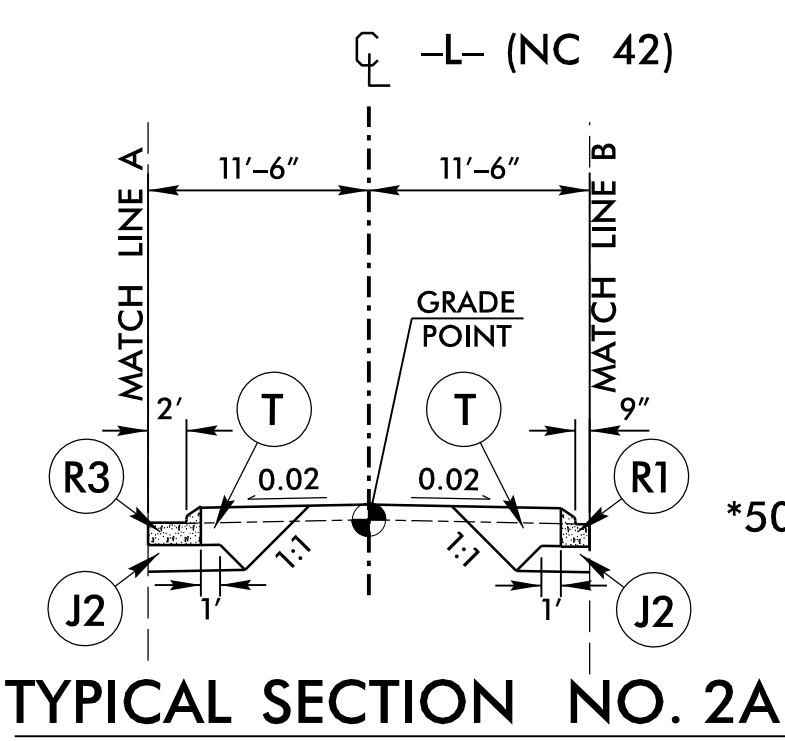
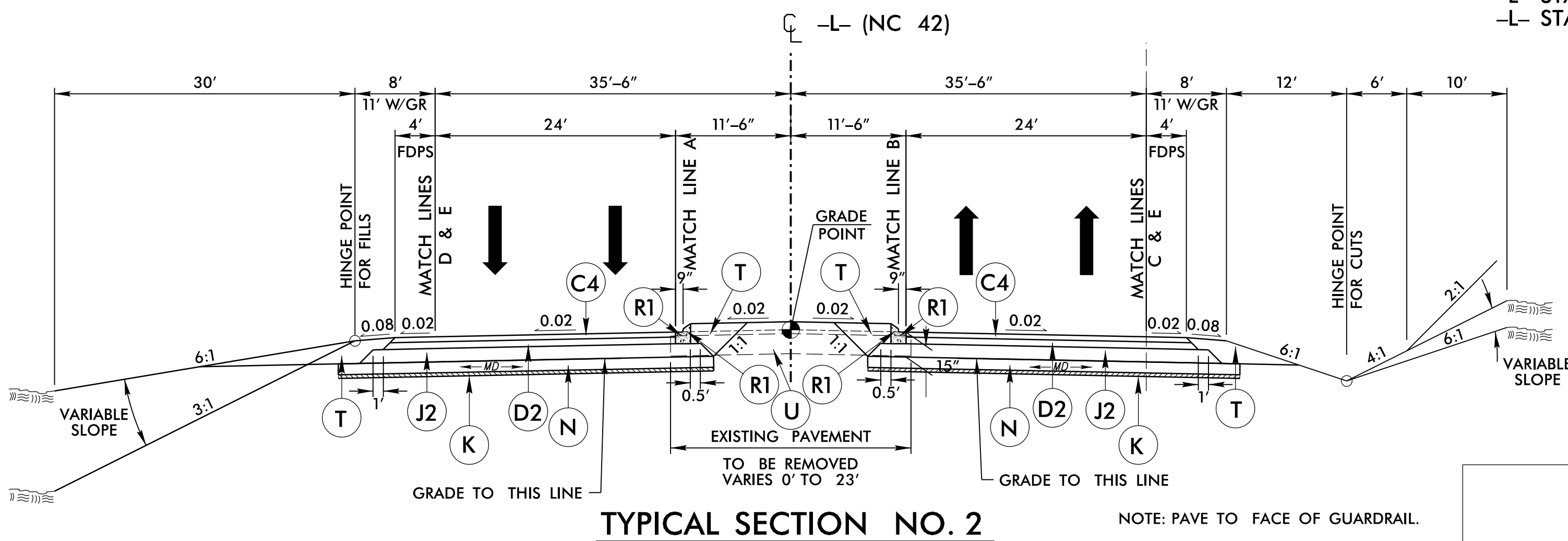
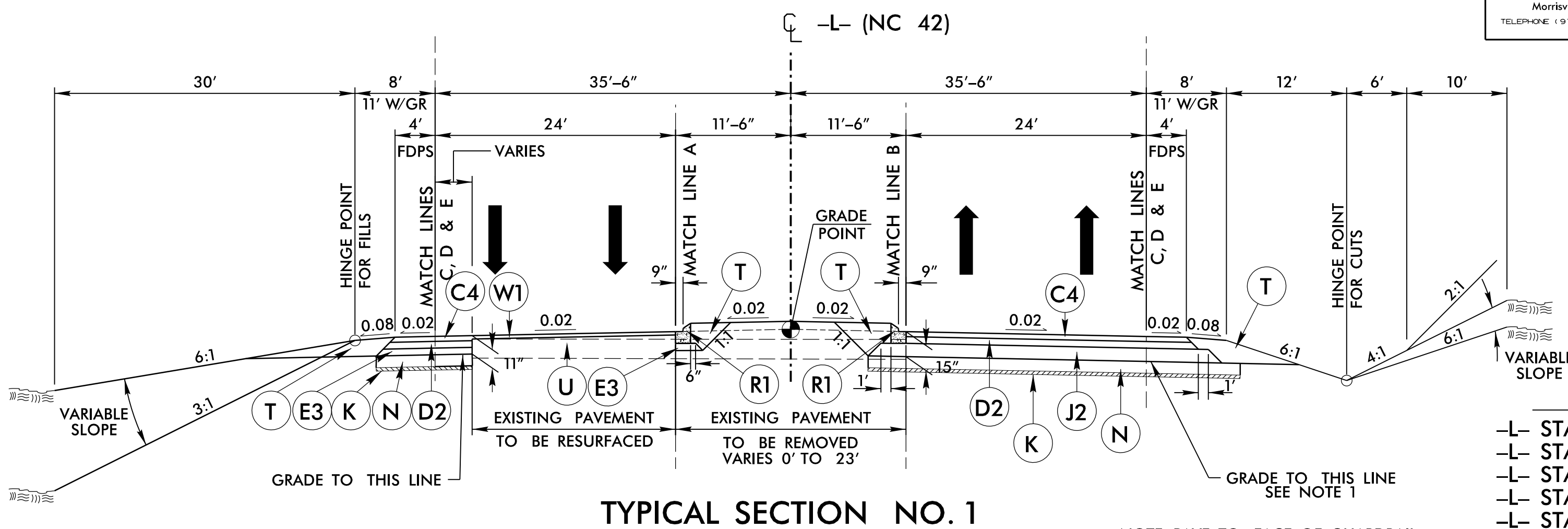
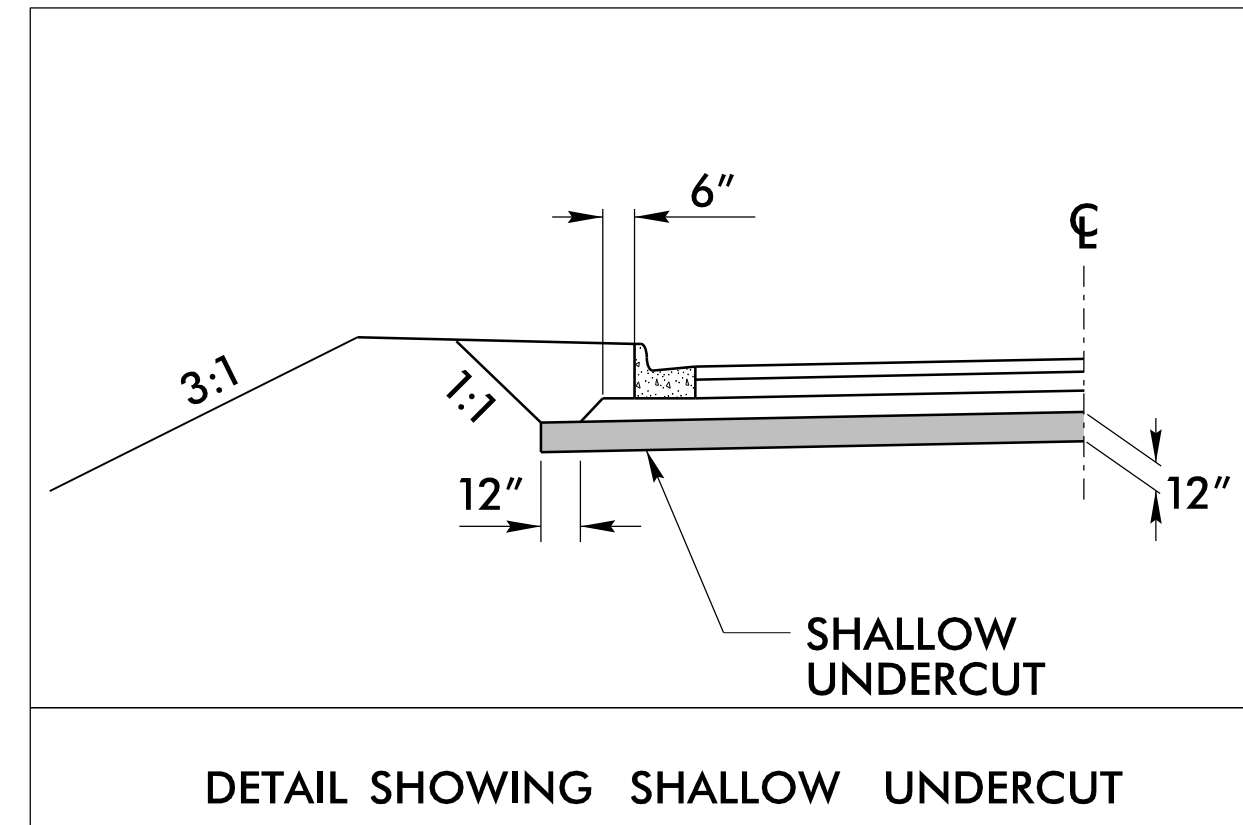


8/17/99

**PAVEMENT SCHEDULE  
FINAL PAVEMENT DESIGN**

C1	PROP. APPROX. 2 1/2" ASPHALT CONCRETE SURFACE COURSE, TYPE S9.5B AT AN AVERAGE RATE OF 138 LBS. PER SQ. YD. IN EACH OF TWO LAYERS.
C2	PROP. VAR. DEPTH ASPHALT CONCRETE SURFACE COURSE, TYPE S9.5B, AT AN AVERAGE RATE OF 110 LBS. PER SQ. YD. PER 1" DEPTH. TO BE PLACED IN LAYERS NOT TO EXCEED 1 1/2" IN DEPTH.
C3	PROP. APPROX. 1 1/2" ASPHALT CONCRETE SURFACE COURSE, TYPE S9.5C AT AN AVERAGE RATE OF 168 LBS. PER SQ. YD.
C4	PROP. APPROX. 3" ASPHALT CONCRETE SURFACE COURSE, TYPE S9.5C, AT AN AVERAGE RATE OF 168 LBS. PER SQ. YD. IN EACH OF TWO LAYERS.
C5	PROP. VAR. DEPTH ASPHALT CONCRETE SURFACE COURSE, TYPE S9.5C, AT AN AVERAGE RATE OF 112 LBS. PER SQ. YD. PER 1" DEPTH. TO BE PLACED IN LAYERS NOT TO EXCEED 2" IN DEPTH.
D1	PROP. APPROX. 2 1/2" ASPHALT CONCRETE INTERMEDIATE COURSE, TYPE I19.0C, AT AN AVERAGE RATE OF 285 LBS. PER SQ. YD.
D2	PROP. APPROX. 4" ASPHALT CONCRETE INTERMEDIATE COURSE, TYPE I19.0C, AT AN AVERAGE RATE OF 456 LBS. PER SQ. YD.
D3	PROP. VAR. DEPTH ASPHALT CONCRETE INTERMEDIATE COURSE, TYPE I19.0C, AT AN AVERAGE RATE OF 114 LBS. PER SQ. YD. PER 1" DEPTH. TO BE PLACED IN LAYERS NOT LESS THAN 2 1/2" IN DEPTH OR GREATER THAN 4" IN DEPTH.
E1	PROP. APPROX. 4 1/2" ASPHALT CONCRETE BASE COURSE, TYPE B25.0C, AT AN AVERAGE RATE OF 513 LBS. PER SQ. YD.
E2	PROP. APPROX. 5" ASPHALT CONCRETE BASE COURSE, TYPE B25.0C, AT AN AVERAGE RATE OF 570 LBS. PER SQ. YD.
E3	PROP. APPROX. 4" ASPHALT CONCRETE BASE COURSE, TYPE B25.0C, AT AN AVERAGE RATE OF 456 LBS. PER SQ. YD.
E4	PROP. APPROX. 5 1/2" ASPHALT CONCRETE BASE COURSE, TYPE B25.0C, AT AN AVERAGE RATE OF 627 LBS. PER SQ. YD.
E5	PROP. VAR. DEPTH ASPHALT CONCRETE BASE COURSE, TYPE B25.0C, AT AN AVERAGE RATE OF 114 LBS. PER SQ. YD. PER 1" DEPTH. TO BE PLACED IN LAYERS NOT LESS THAN 3" IN DEPTH OR GREATER THAN 5 1/2" IN DEPTH.
J1	PROP. 6" AGGREGATE BASE COURSE.
J2	PROP. 8" AGGREGATE BASE COURSE.
K	BASE TO BE TREATED WITH LIME (METHOD-SLURRY) TO A DEPTH OF 8" AT A RATE OF 20 LBS. PER SQ. YD. AS DIRECTED BY THE ENGINEER. OR BASE TO BE TREATED WITH CEMENT TO A DEPTH OF 7" AT A RATE OF 55 LBS. PER SQ. YD. AS DIRECTED BY THE ENGINEER.
N	GEOTEXTILE FOR PAVEMENT STABILIZATION
P	PRIME COAT AT RATE OF .35 GAL PER SQ. YARD
R1	1'-6" CONCRETE CURB AND GUTTER.
R2	2'-6" CONCRETE CURB AND GUTTER.
R3	2'-9" CONCRETE CURB AND GUTTER. SEE DETAIL, THIS SHEET.
R4	EXPRESSWAY GUTTER.
R5	SHOULDER BERM GUTTER.
R6	5" MONOLITHIC CONCRETE ISLAND (KEYED IN)
S	4" CONCRETE SIDEWALK
T	EARTH MATERIAL.
U	EXISTING PAVEMENT.
W1	VARIABLE DEPTH ASPHALT PAVEMENT (SEE DETAIL SHOWING METHOD OF WEDGING NO. 1)
W2	VARIABLE DEPTH ASPHALT PAVEMENT (SEE DETAIL SHOWING METHOD OF WEDGING NO. 2)

NOTE: PAVEMENT EDGE SLOPES ARE 1:1 UNLESS SHOWN OTHERWISE  
TRENCH SLOPES ARE 1:1 UNLESS SHOWN OTHERWISE

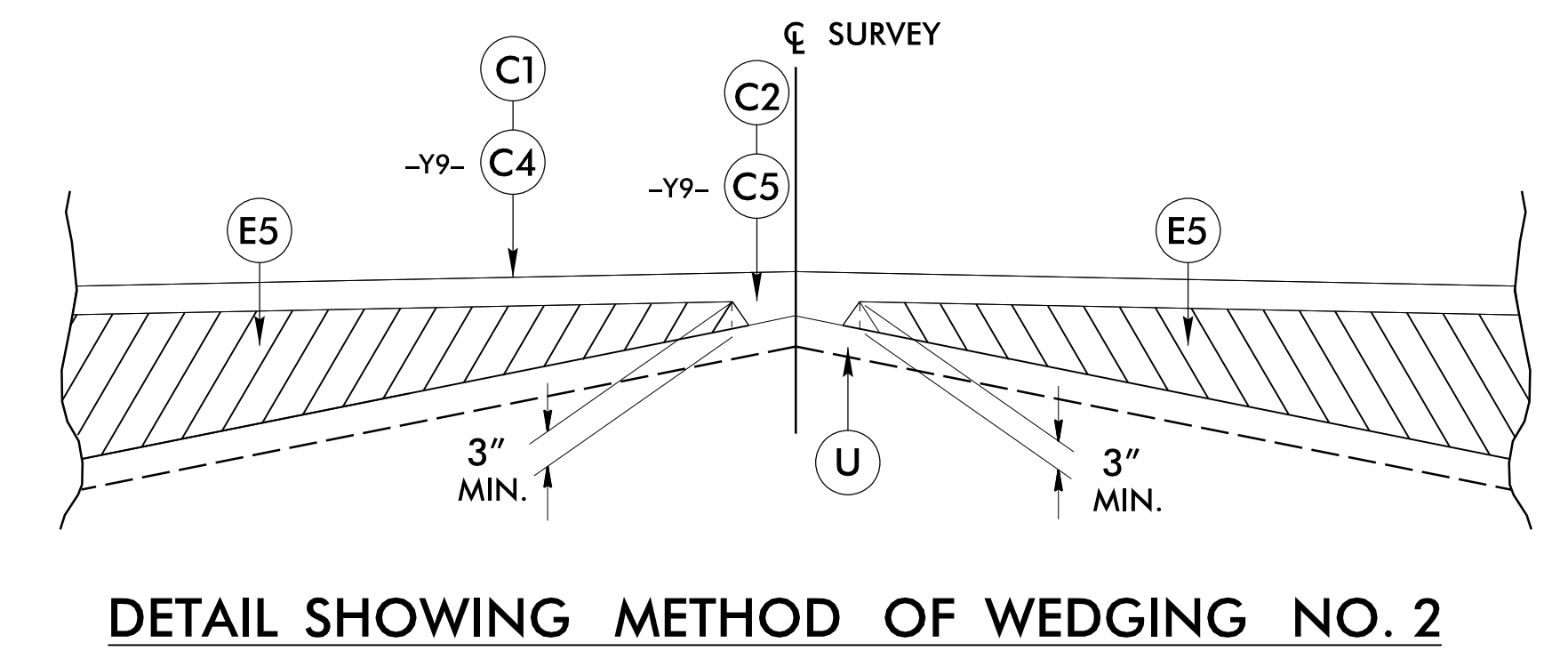
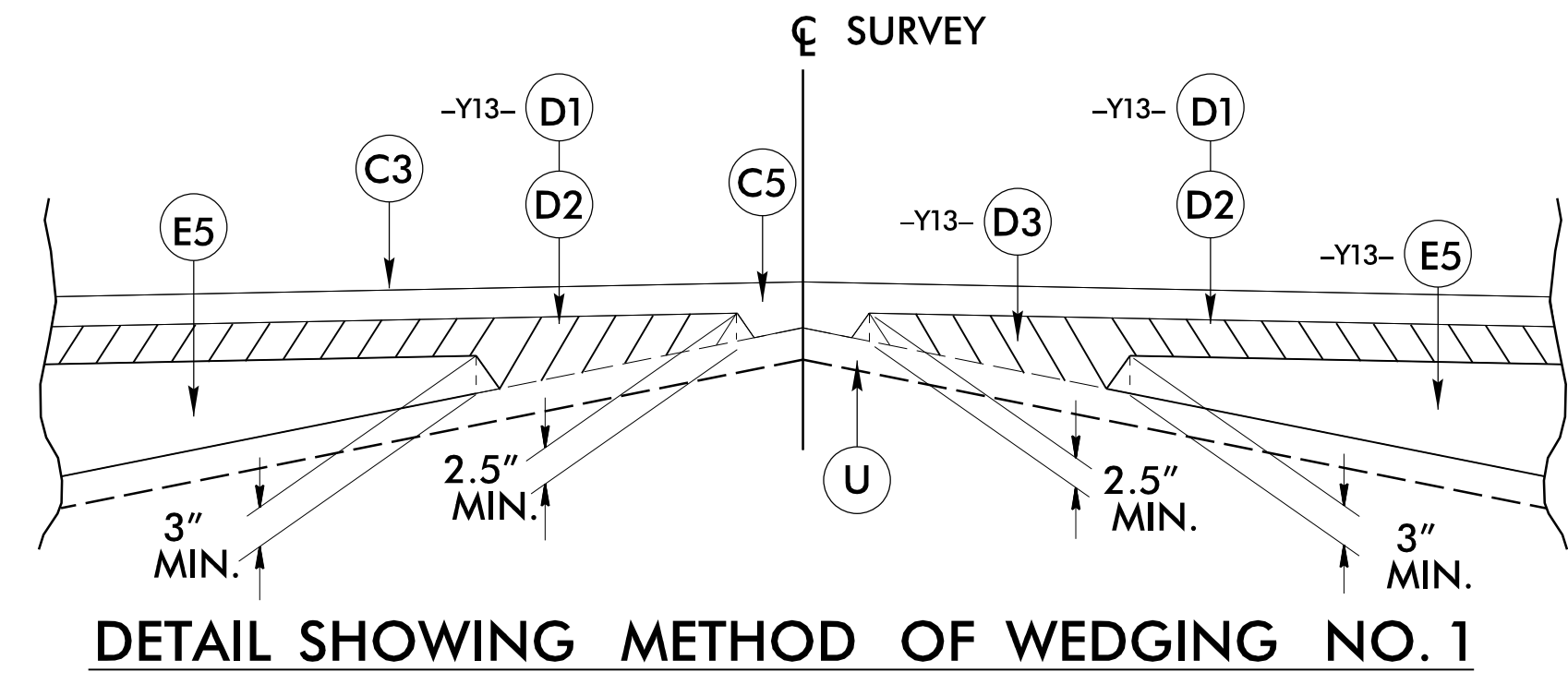


USE TYPICAL SECTION NO. 2A IN CONJUNCTION WITH TYPICAL SECTION NO. 1 AT THE FOLLOWING LOCATIONS:

- L- STA. 32+20.26 TO STA. 38+37.76 LT\*
- L- STA. 74+14.22 TO STA. 75+63.04 RT\*
- L- STA. 162+90.63 TO STA. 167+94.19 RT\*
- L- STA. 177+60.00 TO STA. 182+97.18 LT\*

\*50' TRANSITION BETWEEN 1'-6" CURB AND 2'-9" CURB & GUTTER

- L- STA. 31+70.26 LT
- L- STA. 38+37.76 LT
- L- STA. 73+64.22 RT
- L- STA. 75+63.04 RT
- L- STA. 162+40.63 RT
- L- STA. 167+94.19 RT
- L- STA. 177+10.00 LT
- L- STA. 182+97.18 LT



Prepared by  
**URS**  
URS Corporation - North Carolina  
1600 Perimeter Park Drive  
Morrisville, North Carolina 27560  
TELEPHONE: (919) 461-1100 FAX: (919) 461-1415  
NO. L10266E - C-2242

PROJECT REFERENCE NO.  
R-3825B

SHEET NO.  
2A-1

R/W SHEET NO.

ROADWAY DESIGN ENGINEER  
PAVEMENT DESIGN ENGINEER

DOCUMENT NOT CONSIDERED FINAL UNLESS ALL SIGNATURES COMPLETED

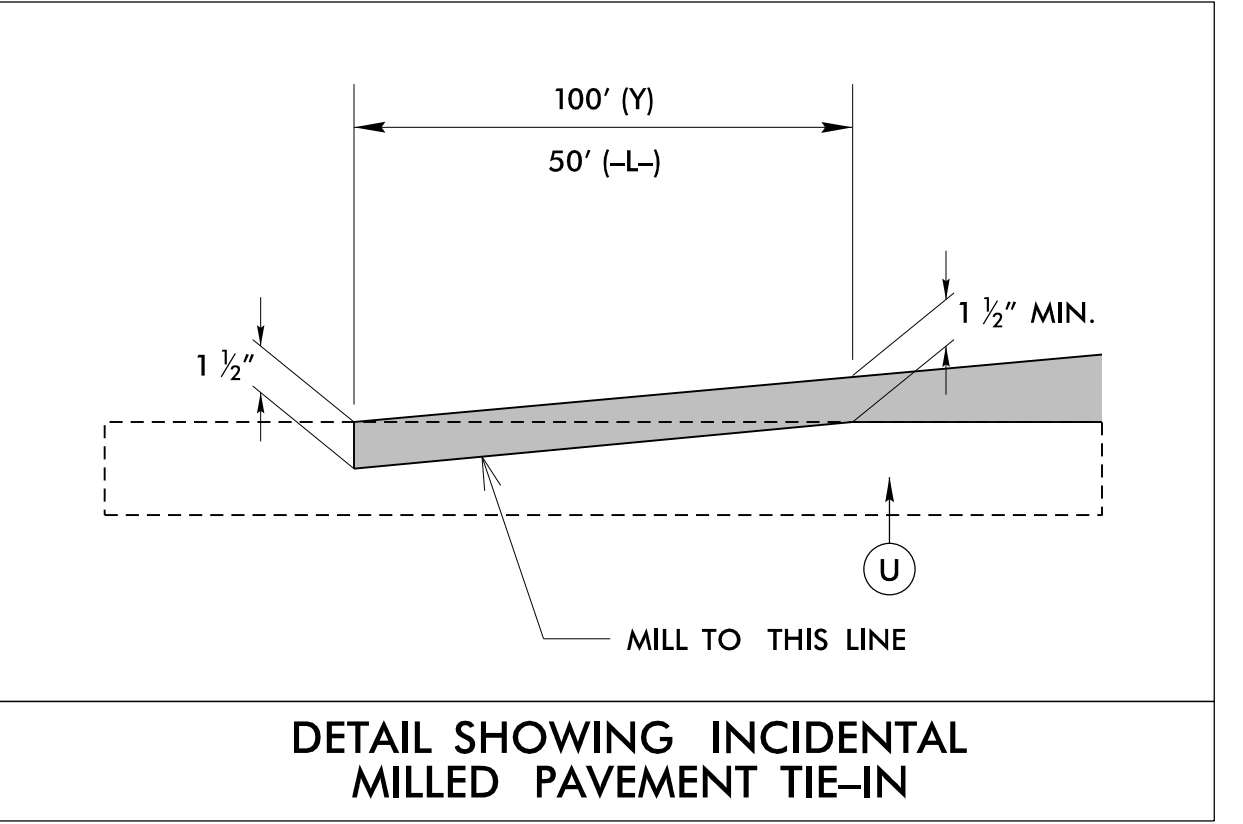
USE TYPICAL SECTION NO. 1 AT THE FOLLOWING LOCATION:

- L- STA. 12+77.00 TO STA. 16+50.00 MILL & RESURFACE
- L- STA. 16+50.00 TO STA. 23+50.50 RESURF. LT & RT
- L- STA. 26+00.50 TO STA. 38+87.76 RESURF. LT & RT
- L- STA. 50+30.17 TO STA. 62+07.50 RESURF. LT
- L- STA. 73+64.22 TO STA. 76.32.36 RESURF. LT
- L- STA. 95+55.70 TO STA. 107+83.69 RESURF. LT & RT
- L- STA. 120+10.11 TO STA. 125+25.01 RESURF. LT & RT
- L- STA. 153+22.00 TO STA. 171+16.31 RESURF. LT & RT
- L- STA. 176+62.24 TO STA. 189+58.30 RESURF. LT & RT
- L- STA. 194+80.16 TO STA. 199+60.16 RESURF. LT & RT
- L- STA. 214+42.08 TO STA. 216+29.03 RESURF. LT & RT

NOTE 1: SEE TYPICAL SECTION NO. 3A & 3B FOR PAVEMENT STABILIZATION LOCATIONS.

USE TYPICAL SECTION NO. 2 AT THE FOLLOWING LOCATION:

- L- STA. 107+87.06 TO STA. 114+65.11
- L- STA. 199+60.16 TO STA. 214+42.08



REVISIONS

9/6/2018  
R:\Roadway\Proj\NR3825B\_rdy\_tjpb.dgn  
tjpb