

NOTES:

FOR "VIEW X-X", SEE "BENT 2" SHEET 2 OF 2.

FOR "SECTION A-A" AND "SECTION B-B", SEE "BENT 2" SHEET 2 OF 2.

FOR REINFORCING BILL OF MATERIAL, SEE "BENT 2" SHEET 2 OF 2.

STIRRUPS IN CAP MAY BE SHIFTED AS NECESSARY TO CLEAR COLUMN STEEL AND ANCHOR BOLTS.

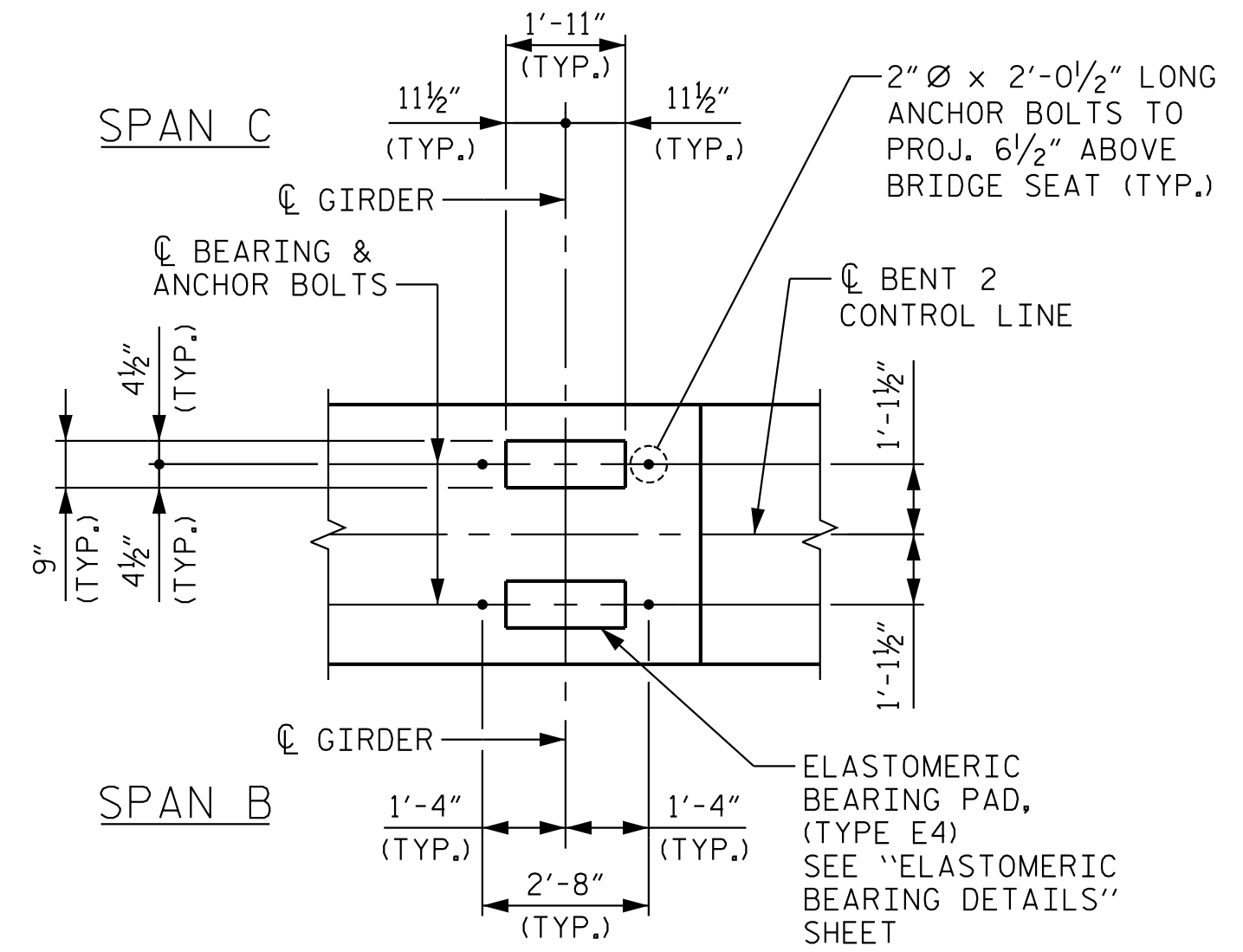
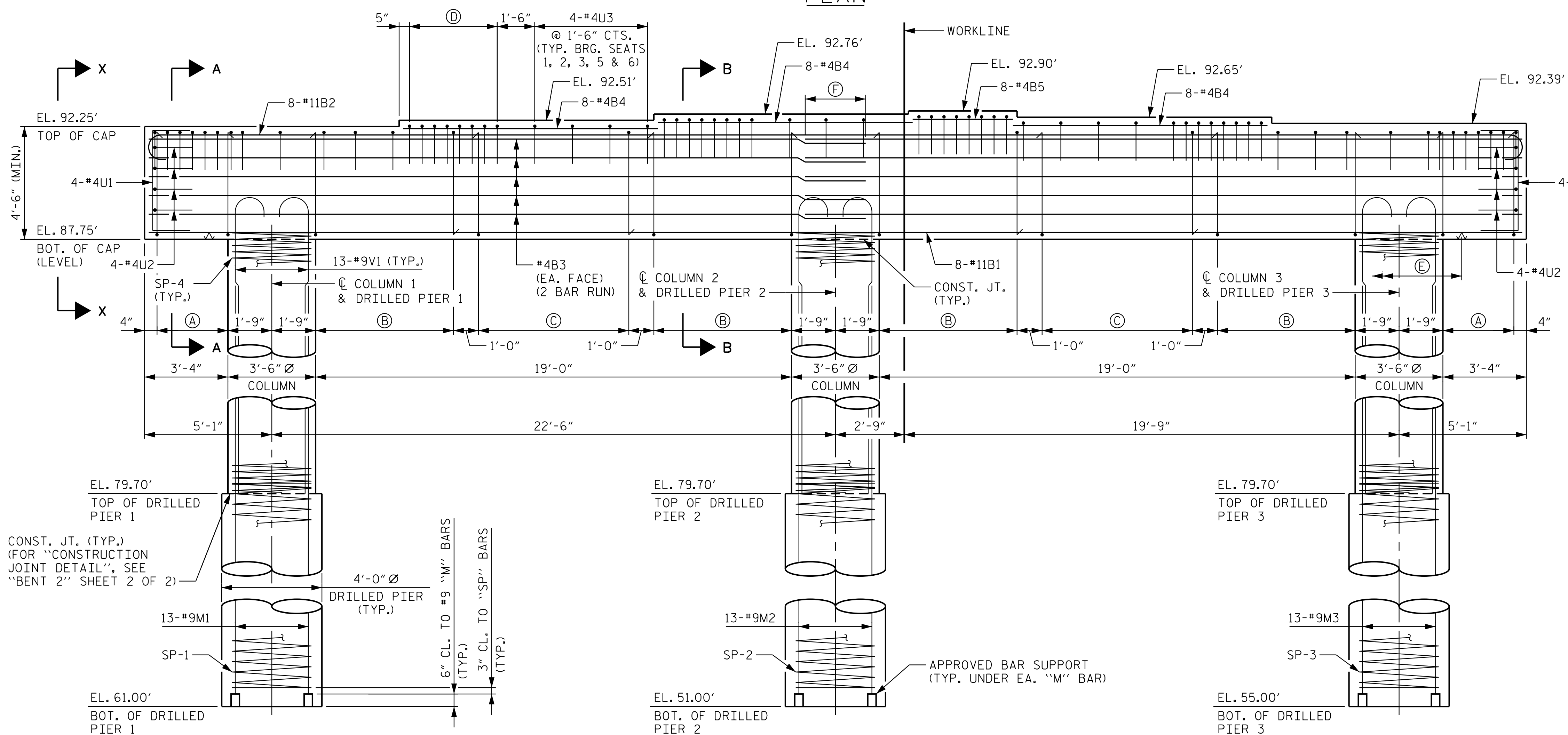
HOOKS ON "V" BARS MAY BE TURNED AS NECESSARY FOR PLACING REINFORCING STEEL.

FOR ADDITIONAL NOTES, SEE "GENERAL DRAWING" SHEET 2 OF 3.

THE LOCATION OF THE CONSTRUCTION JOINT IN THE DRILLED PIERS IS BASED ON AN APPROXIMATE GROUND LINE ELEVATION. IF THE CONSTRUCTION JOINT IS ABOVE THE ACTUAL GROUND ELEVATION, THE CONTRACTOR SHALL PLACE THE CONSTRUCTION JOINT 1 FT. BELOW THE GROUND LINE.

THE CONTRACTOR'S ATTENTION IS CALLED TO THE FACT THAT THE LONGITUDINAL REINFORCEMENT FOR THE DRILLED PIERS IS DETAILED WITH 3' OF EXTRA LENGTH.

ALL STEEL IN THE DRILLED PIERS IS INCLUDED IN THE PAY ITEMS FOR "REINFORCING STEEL" AND "SPIRAL COLUMN REINFORCING STEEL".

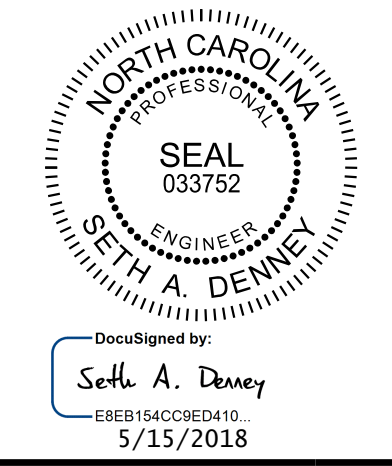


- (A) 7-PAIRS #5S1 (INVERT ALT. PAIRS) @ 6" CTS.
- (B) 12-PAIRS #5S1 (INVERT ALT. PAIRS) @ 6" CTS.
- (C) 7-PAIRS #5S1 (INVERT ALT. PAIRS) @ 12" CTS.
- (D) 8-#4U3 @ 6" CTS. (TYP. BRG. SEATS 1 - 6)
- (E) 3" HIGH B.B. @ 5'-0" CTS. MAX.
- (F) 2'-5" SPLICE (TYP. #4B3)

PROJECT NO. R-3822
 HALIFAX COUNTY
 STATION: 99+17.60 -L1-

SHEET 1 OF 2

STATE OF NORTH CAROLINA
 DEPARTMENT OF TRANSPORTATION
 RALEIGH
 SUBSTRUCTURE
 BENT 2
 PLAN AND ELEVATION



Kimley-Horn
 421 Fayetteville Street, Suite 600
 Raleigh, NC 27601-1772
 Phone (919) 677-2000 NC LICENSE # F-0102

**DOCUMENT NOT CONSIDERED FINAL
 UNLESS ALL SIGNATURES COMPLETED**

| REVISIONS | | | | | | SHEET NO. |
|-----------|-----|-------|-----|-----|-------|--------------|
| NO. | BY: | DATE: | NO. | BY: | DATE: | S-46 |
| 1 | | | 3 | | | TOTAL SHEETS |
| 2 | | | 4 | | | 58 |

K:\BIDI_Structures\Bridges\NC\01036392 - R-3822\Gcd\Gcd.dgn\R3822.SMU.B3-410208.dgn
 5/14/2018

DRAWN BY: D. D. LOWERY DATE: 03/18
 CHECKED BY: C. I. POOLE DATE: 03/18
 DESIGN ENGINEER OF RECORD: S. A. DENNEY DATE: 03/18