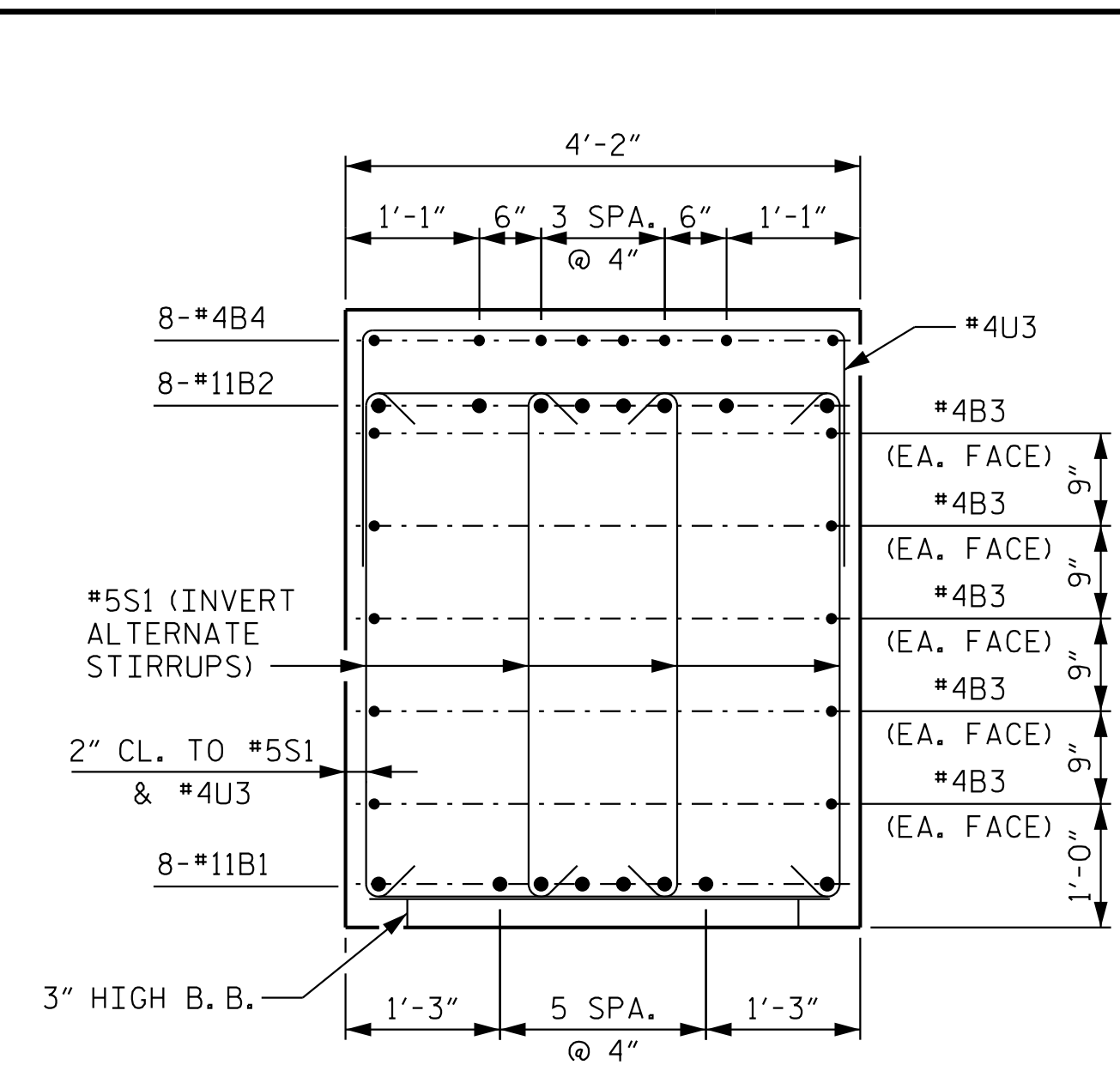
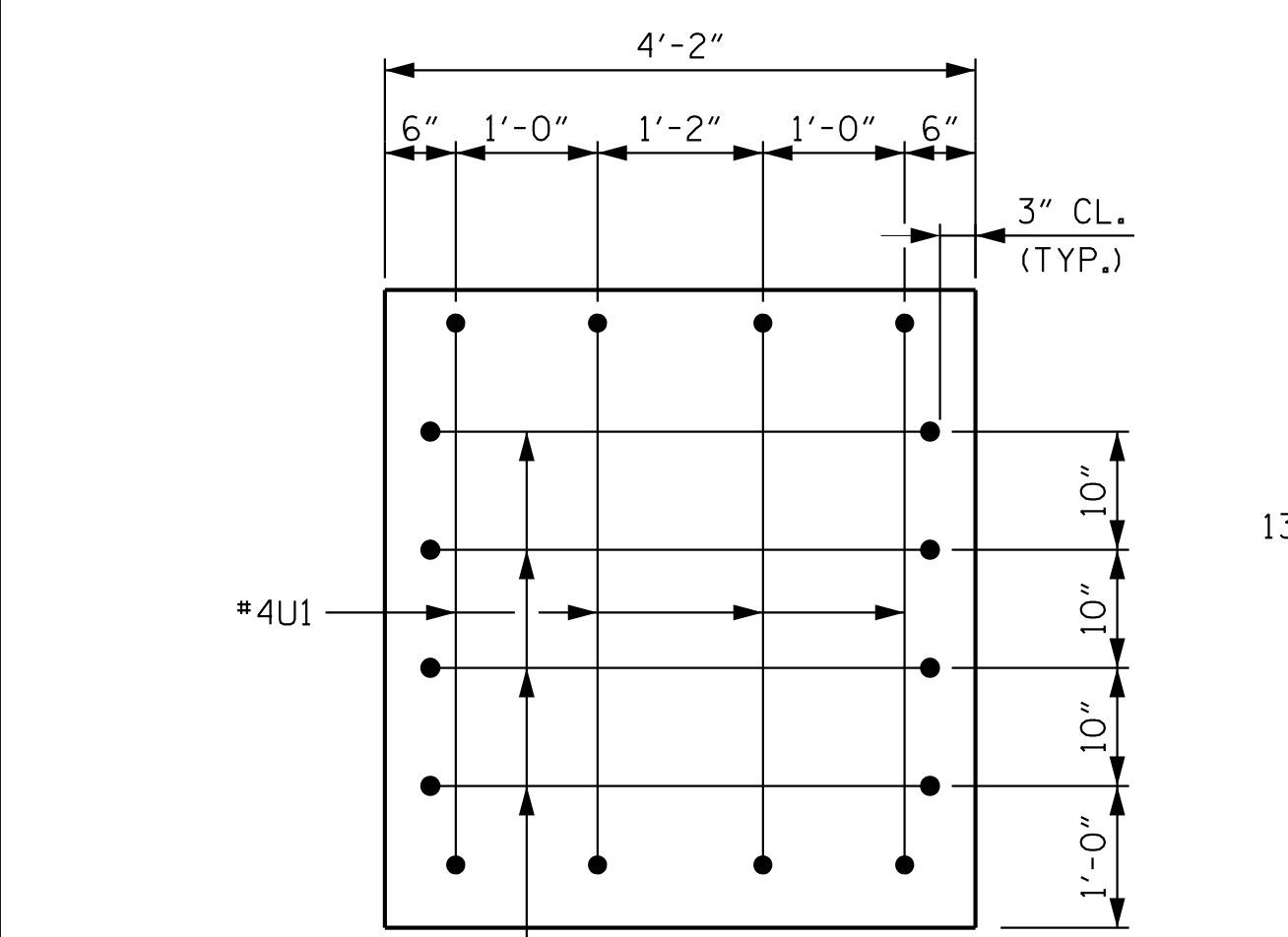


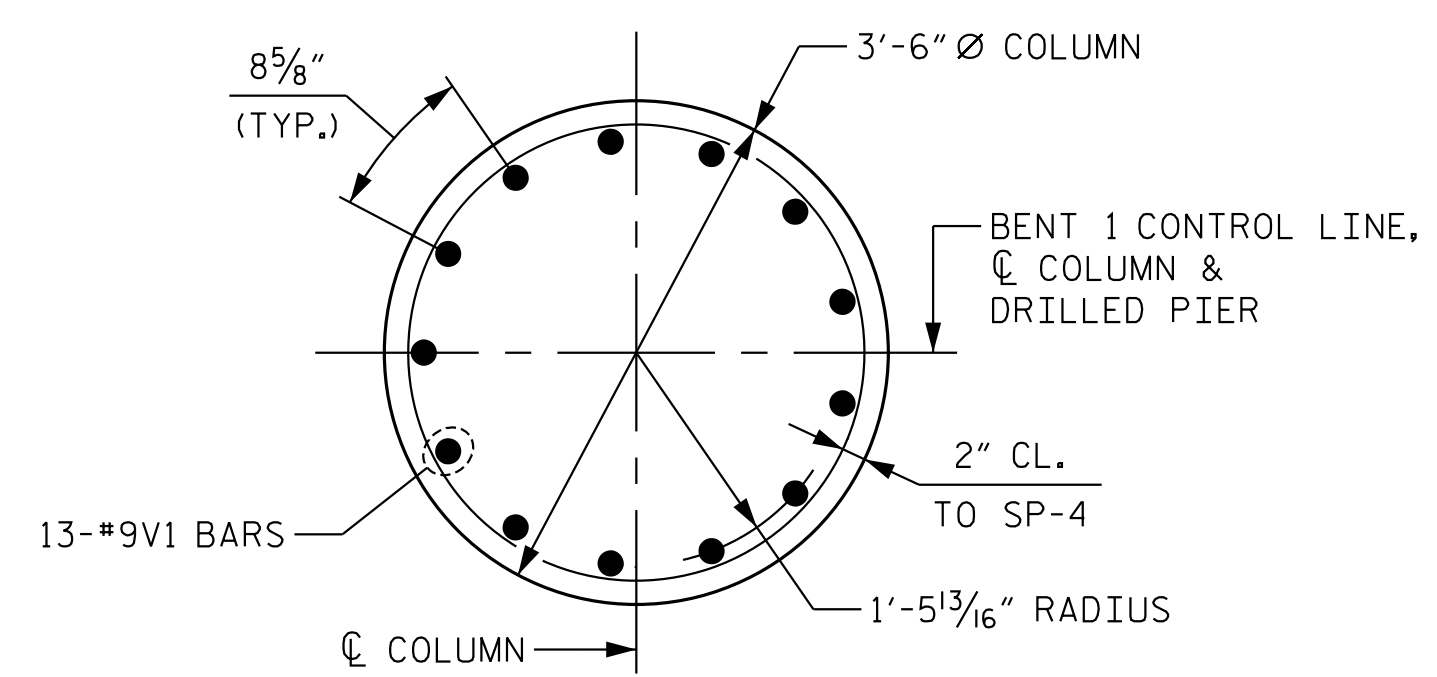
SECTION A-A



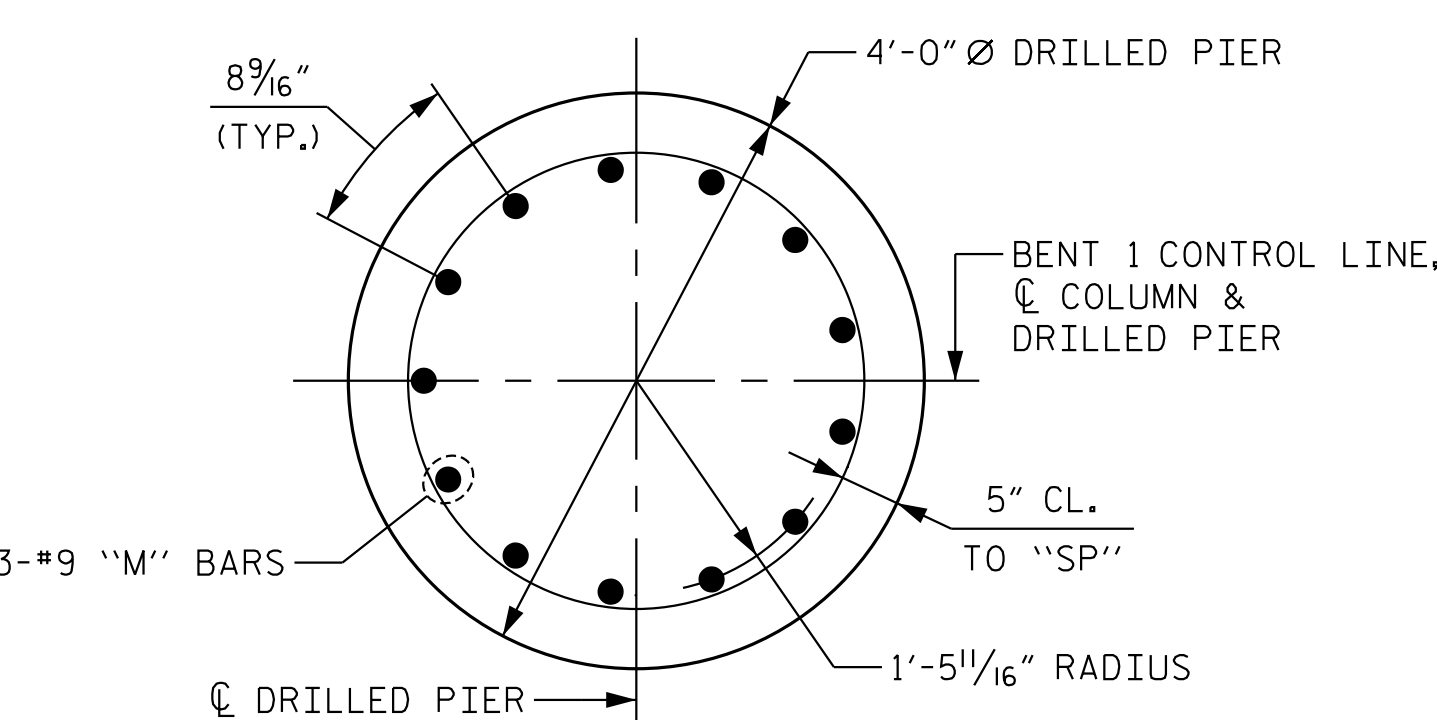
SECTION B-B



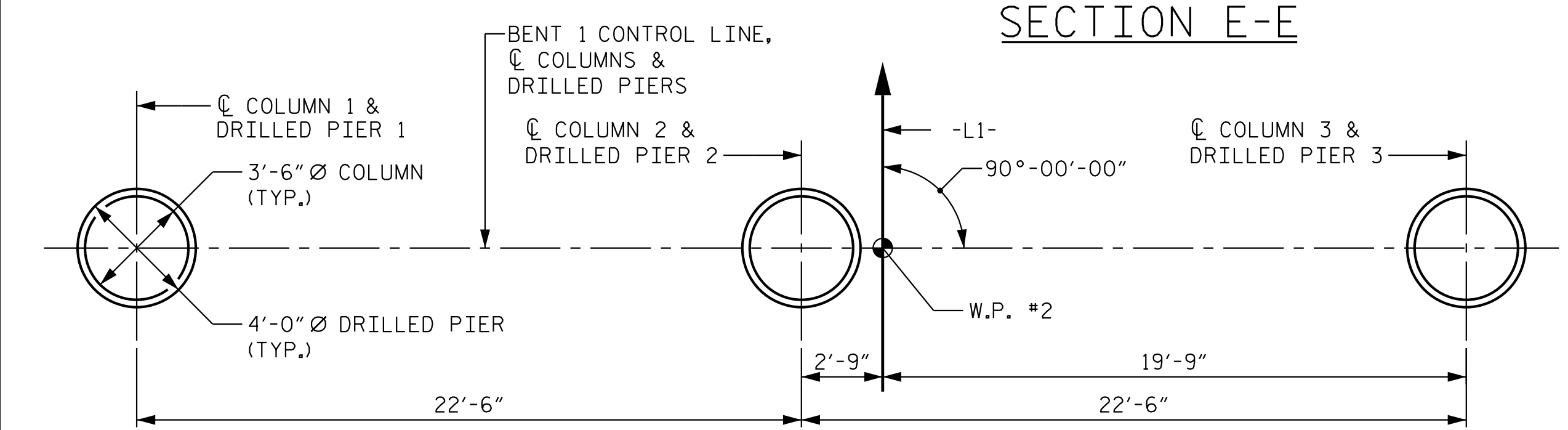
VIEW X-X
(LEFT END SHOWN, RIGHT END SIMILAR)



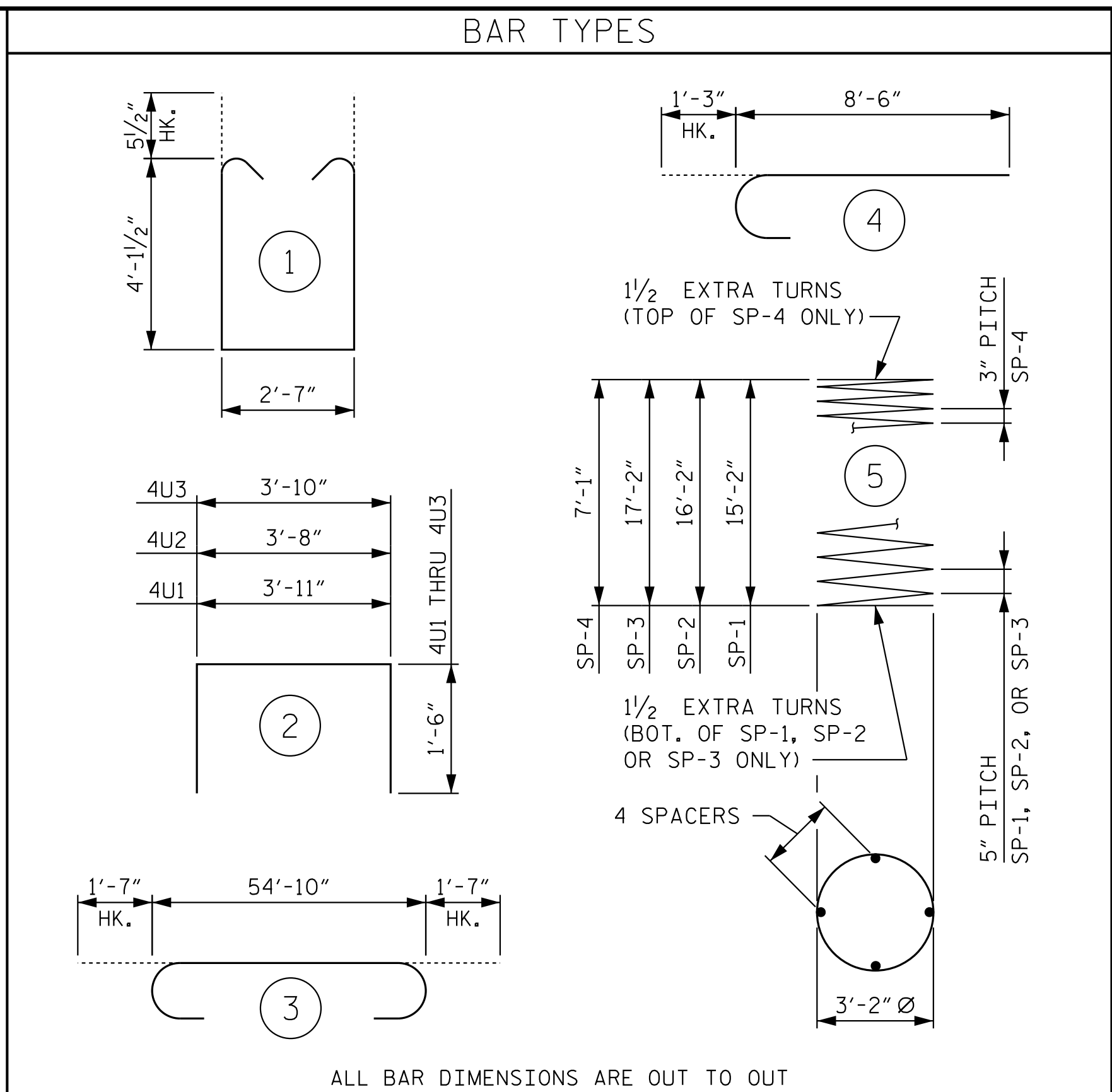
SECTION D-D



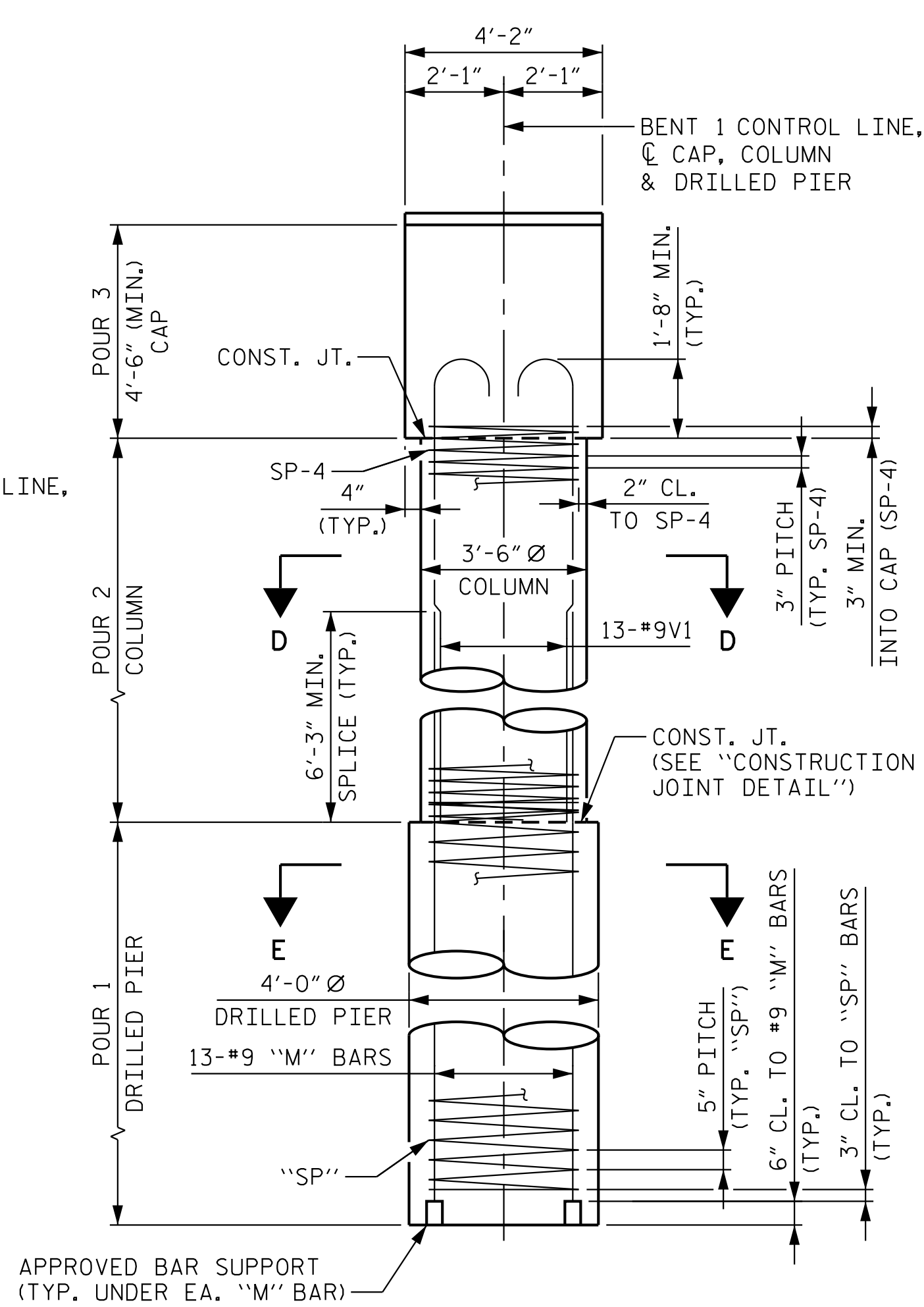
SECTION E-E



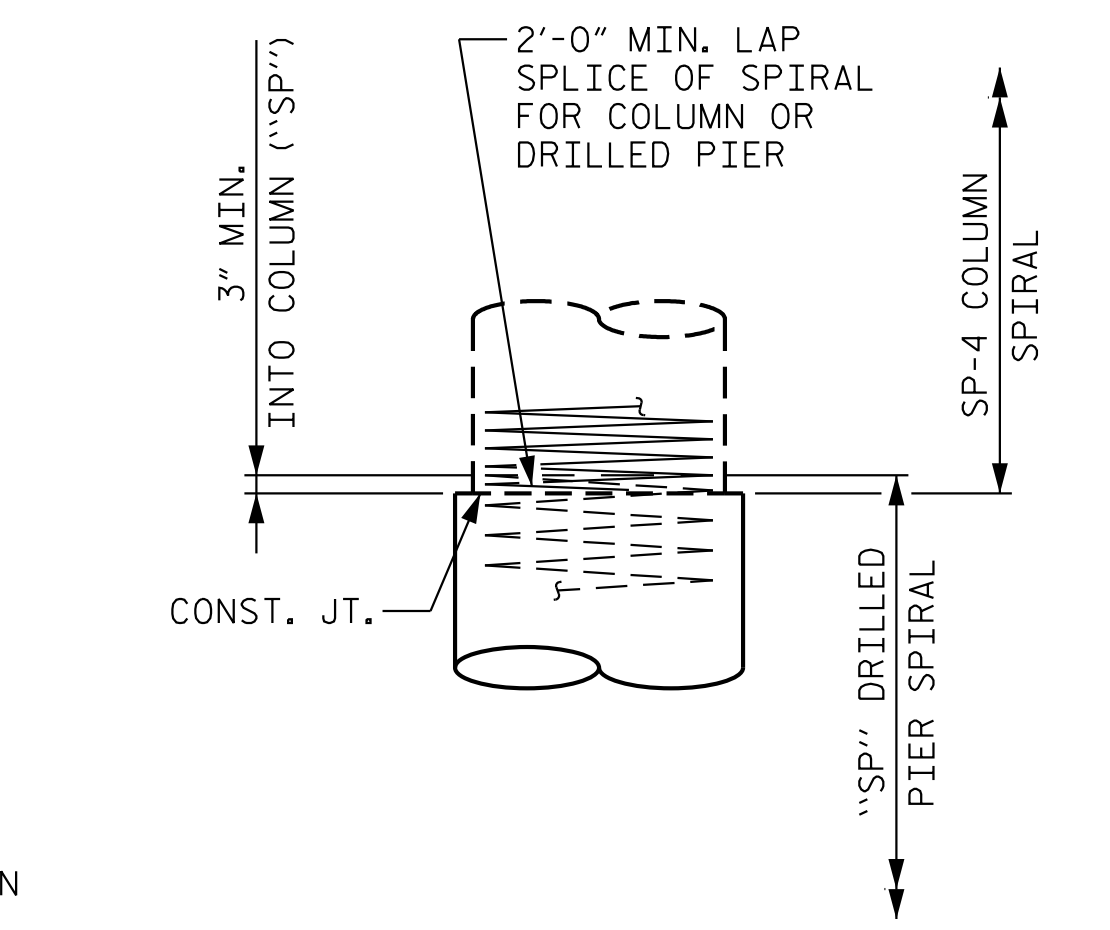
PLAN OF DRILLED PIERS & COLUMNS



ALL BAR DIMENSIONS ARE OUT TO OUT



END ELEVATION



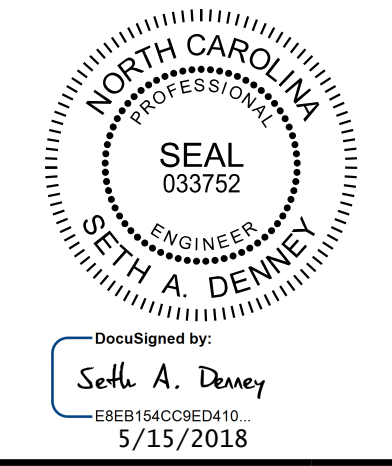
CONSTRUCTION JOINT DETAIL

BILL OF MATERIAL					
BENT 1					
BAR NO.	SIZE	TYPE	LENGTH	WEIGHT	
B1	8	11	STR	54'-10"	2331
B2	8	11	3	58'-0"	2465
B3	20	4	STR	28'-8"	383
B4	24	4	STR	10'-2"	163
B5	8	4	STR	4'-0"	21
M1	13	9	STR	24'-5"	1079
M2	13	9	STR	25'-5"	1123
M3	13	9	STR	26'-5"	1168
S1	152	5	1	11'-9"	1863
U1	8	4	2	6'-11"	37
U2	8	4	2	6'-8"	36
U3	68	4	2	6'-10"	310
V1	39	9	4	9'-9"	1293
REINFORCING STEEL					12,272 LBS.
SP-1	1	**	5	371'-3"	387
SP-2	1	**	5	394'-9"	412
SP-3	1	**	5	418'-3"	436
SP-4	3	*	5	293'-2"	587
SPIRAL REINFORCING STEEL					1,822 LBS.
** THE "SP" SPIRAL REINFORCING STEEL SHALL BE W31 OR D-31 COLD DRAWN WIRE OR #5 PLAIN OR DEFORMED BAR.					
* THE "SP" SPIRAL REINFORCING STEEL SHALL BE W20 OR D-20 COLD DRAWN WIRE OR #4 PLAIN OR DEFORMED BAR.					

BENT 1 TOTAL QUANTITIES		
CLASS A CONCRETE		
POUR 2 (COLUMNS)	C.Y.	7.3
POUR 3 (CAP)	C.Y.	40.7
TOTAL CLASS A CONCRETE		C.Y. 48.0
DRILLED PIERS, CONCRETE		
POUR 1	C.Y.	23.2
4'-0" Ø DRILLED PIERS IN SOIL	LIN. FT.	21.8
4'-0" Ø DRILLED PIERS NOT IN SOIL	LIN. FT.	28.0
CSL TUBES	LIN. FT.	217.2
PERMANENT STEEL CASING FOR 4'-0" Ø DRILLED PIERS	LIN. FT.	22.8

PROJECT NO. R-3822
HALIFAX COUNTY
 STATION: 99+17.60 -L1-

SHEET 2 OF 2
 STATE OF NORTH CAROLINA
 DEPARTMENT OF TRANSPORTATION
 RALEIGH
 SUBSTRUCTURE
 BENT 1
 SECTIONS AND DETAILS



Kimley-Horn
 421 Fayetteville Street, Suite 600
 Raleigh, NC 27601-1772
 Phone (919) 677-2000 NC LICENSE # F-0102

REVISIONS					
NO.	BY:	DATE:	NO.	BY:	DATE:
1			3		
2			4		

SHEET NO.	
S-45	TOTAL SHEETS 58

DOCUMENT NOT CONSIDERED FINAL UNLESS ALL SIGNATURES COMPLETED

5/14/2018 K:\BIDI_Structures\Bridges\NC\01036392 - R-3822\cadd\Drawings\3822.SMU.B2-410208.dgn

DRAWN BY: D. D. LOWERY DATE: 03/18
 CHECKED BY: C. I. POOLE DATE: 03/18
 DESIGN ENGINEER OF RECORD: S. A. DENNEY DATE: 03/18