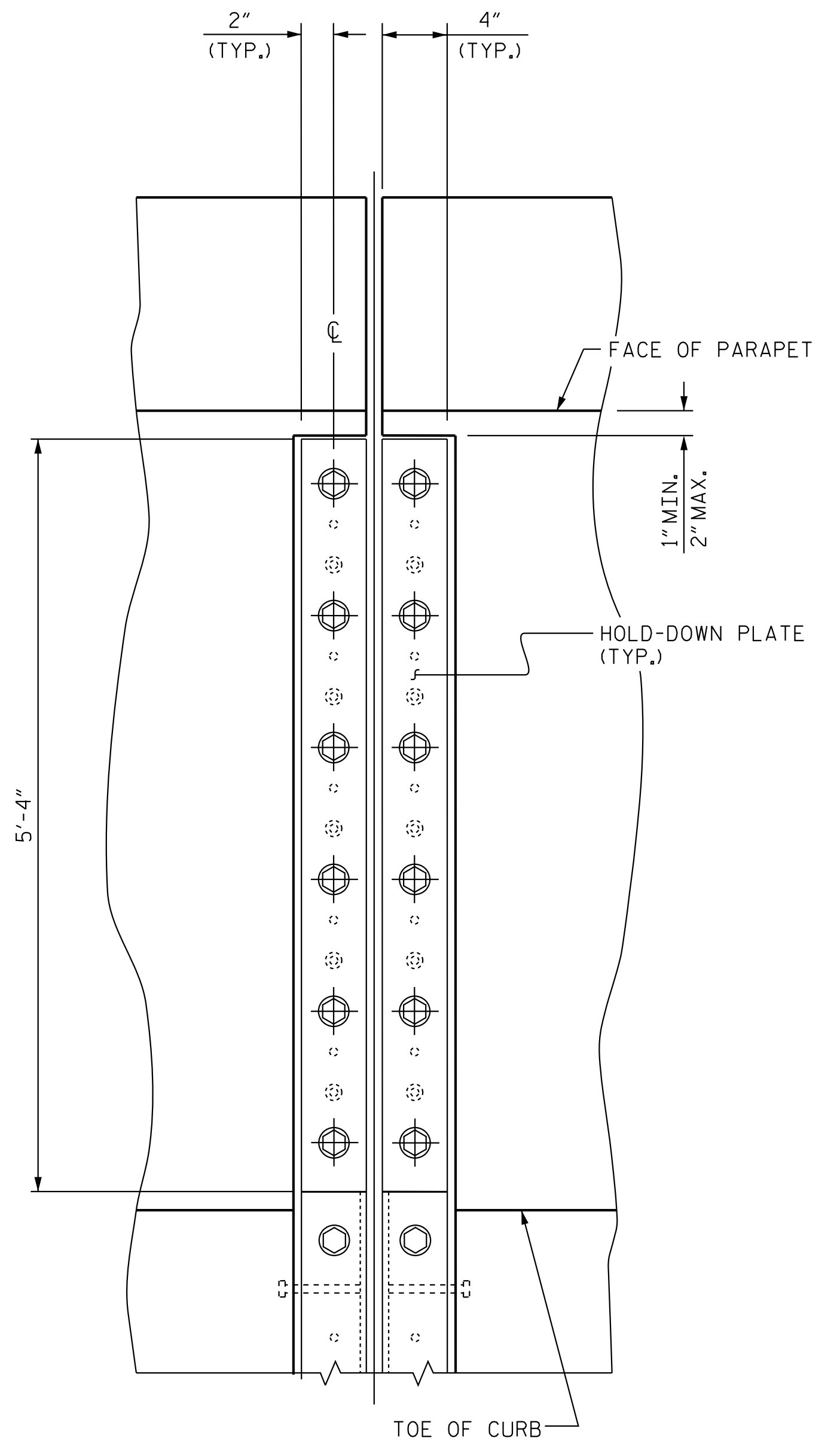
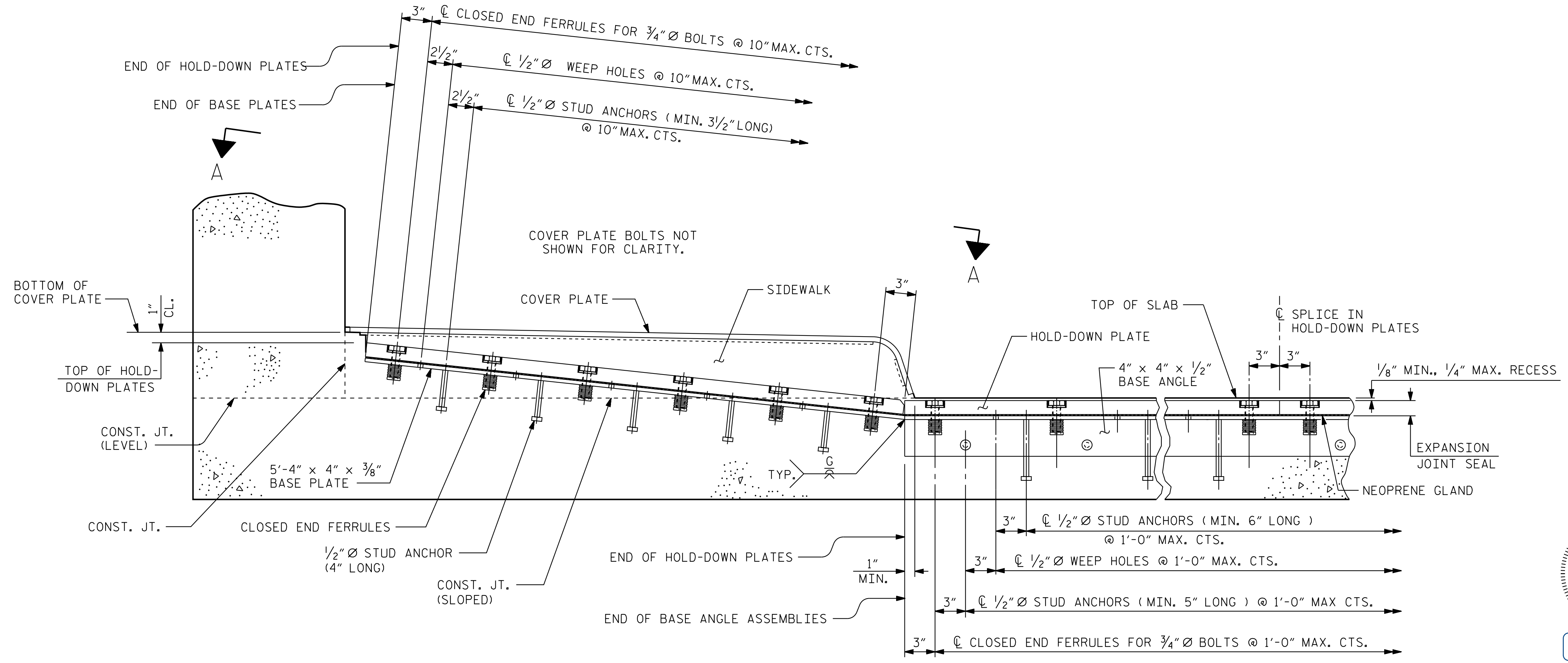


PLAN OF EXPANSION JOINT SEAL - LEFT SIDE



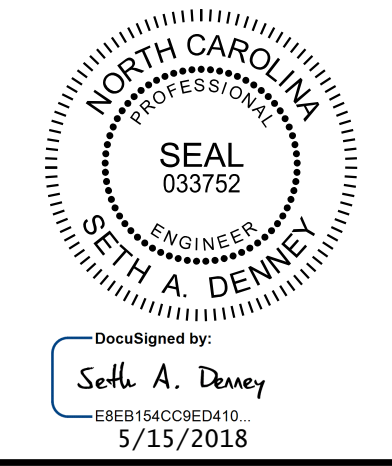
SECTION A - A



SECTION THRU SIDEWALK NORMAL TO JOINT - LEFT SIDE

PROJECT NO. R-3822
 HALIFAX COUNTY
 STATION: 99+17.60 -L1-

SHEET 3 OF 4



Kimley»Horn
 421 Fayetteville Street, Suite 600
 Raleigh, NC 27601-1772
 Phone (919) 677-2000 NC LICENSE # F-0102

STATE OF NORTH CAROLINA
 DEPARTMENT OF TRANSPORTATION
 RALEIGH
 STANDARD
 EXPANSION JOINT SEAL DETAILS
 FOR SIDEWALK
 (LEFT SIDE)

REVISIONS						SHEET NO.
NO.	BY:	DATE:	NO.	BY:	DATE:	S-36
1			3			TOTAL SHEETS
2			4			58

**DOCUMENT NOT CONSIDERED FINAL
 UNLESS ALL SIGNATURES COMPLETED**

This document, together with the concepts and designs presented herein, is an integral part of the project. It is to be used only for the specific project and site. Any use, reproduction, or adaptation of this document without written authorization and approval by Kimley-Horn and Associates, Inc. shall be without liability to Kimley-Horn and Associates, Inc.
 Copyright Kimley-Horn and Associates, Inc. 2018

STD. NO. EJS3

K:\BID1-Structures\Bridges\NC\01036392 - R-3822\Coa\Drawn\3822-SMU-JS3-410208.dgn

ASSEMBLED BY : D. D. LOWERY	DATE : 03/18
CHECKED BY : C. T. POOLE	DATE : 03/18
DRAWN BY : REK 10/87	REV. 5/1/06 TLA/GM
CHECKED BY : CRK 1/88	REV. 10/1/11 MAA/GM
	REV. 12/17 MAA/THG