


5/14/19

NOTES:  
1. DCV BACKFLOW PREVENTION ASSEMBLIES ARE PRIVATELY OWNED. CONTRACTOR SHALL COORDINATE RELOCATION WITH OWNERS.

GOOD NEWS BAPTIST CHURCH OF ROANOKE RAPIDS INC  
DB 2319 PG 507  
MB 17 PG 89

**Kimley»Horn**

421 FAYETTEVILLE STREET, SUITE 600  
RALEIGH, N.C. 27601

PROJECT REFERENCE NO.	SHEET NO.
U-5725/R-3822	UC-10
R/W SHEET NO. 10	
UTILITY DESIGN ENGINEER	
	
8/9/2018 2:37:22 PM EDT	

**DOCUMENT NOT CONSIDERED FINAL UNLESS ALL SIGNATURES COMPLETED**

NAD 83 / NA 2011

REVISIONS

MATCHLINE -L- STA 84+00.00  
SEE SHEET UC-9

55  
MASUKI INC.  
DB 2430 PG 17  
DB 1991 PG 325

**BEGIN CONSTRUCTION**  
-Y4- POC Sta. 13+65.00

**-Y4- NC 125**

GATOR VET LLC  
DB 2323 PG 65  
PC 6 SL 115-S

59  
CROSS CREEK CORNER, LLC  
DB 2117 PG 130  
PC 6 SL 117-M

60  
NANCY ELIAS  
DB 2043 PG 609  
PC 6 SL 108-K

61  
NANCY ELIAS  
DB 2262 PG 515  
PC 6 SL 108-K

GILBERT CHICHESTER  
DB 2024 PG 326  
PC 6 SL 108-K

LANA HORN  
DB 2405 PG 519  
PC 6 SL 108-K

WILLIAM BOSEMAN  
DB 2017 PG 187  
PC 6 SL 108-K

CHANNEL IMPROVEMENTS  
CLASS II RIP RAP  
EST 45 TONS  
EST 40 SY GFD  
SEE DETAIL 12/SHEET 2D-1

ABANDON APPROX 65 LF  
2" WATERLINE

SPECIAL LATERAL 'V' DITCH  
W/CLASS 'B' RIP RAP  
EST 10 TONS  
EST 21 SY GFD  
SEE DETAIL 5/SHEET 2D-1

SPECIAL LATERAL 'V' DITCH  
SEE DETAIL 1/SHEET 2D-1  
TEMPORARY CONSTRUCTION  
EASEMENT

SPECIAL LATERAL 'V' DITCH  
SEE DETAIL 1/SHEET 2D-1

SPECIAL LATERAL 'V' DITCH  
SEE DETAIL 1/SHEET 2D-1

**END CONSTRUCTION**  
-DRW2- POT Sta. 12+10.00

56  
RIDER FARMS LLC  
DB 2262 PG 642  
PC 6 SL 105-E

54  
RIDER FARMS LLC  
DB 2262 PG 642  
PC 6 SL 105-E

58  
CITIZENS COMMUNITY BANK  
DB 2178 PG 531  
PC 6 SL 141-I

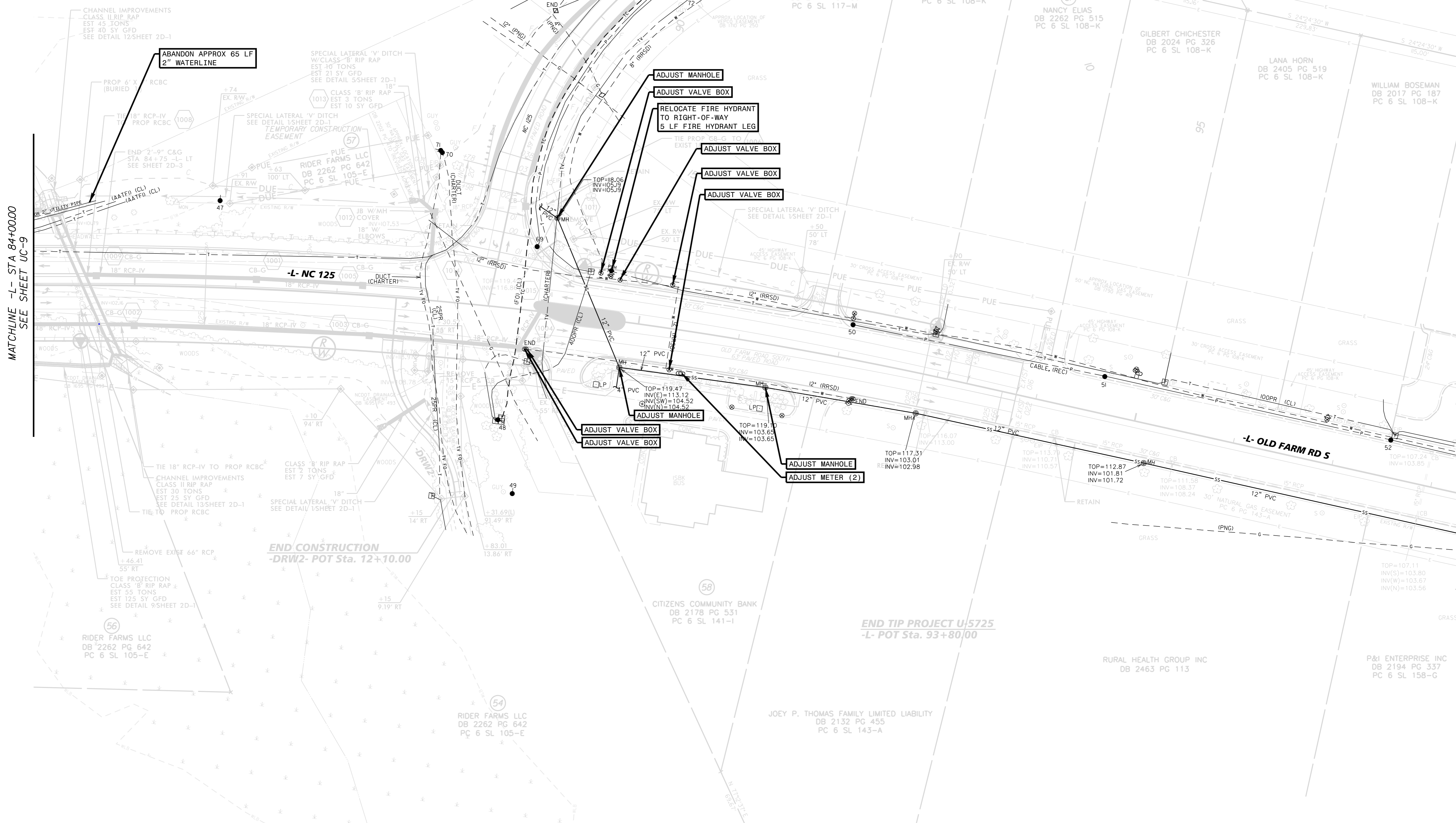
JOEY P. THOMAS FAMILY LIMITED LIABILITY  
DB 2132 PG 455  
PC 6 SL 143-A

RURAL HEALTH GROUP INC  
DB 2463 PG 113

P&I ENTERPRISE INC  
DB 2194 PG 337  
PC 6 SL 158-G

**END TIP PROJECT U-5725**  
-L- POT Sta. 93+80/00

**-L- OLD FARM RD S**



8/9/2018