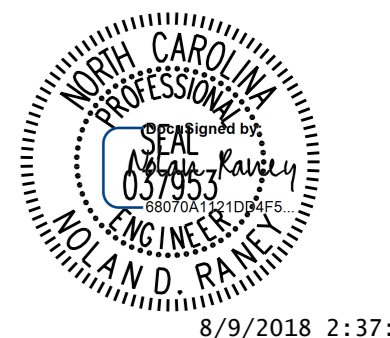
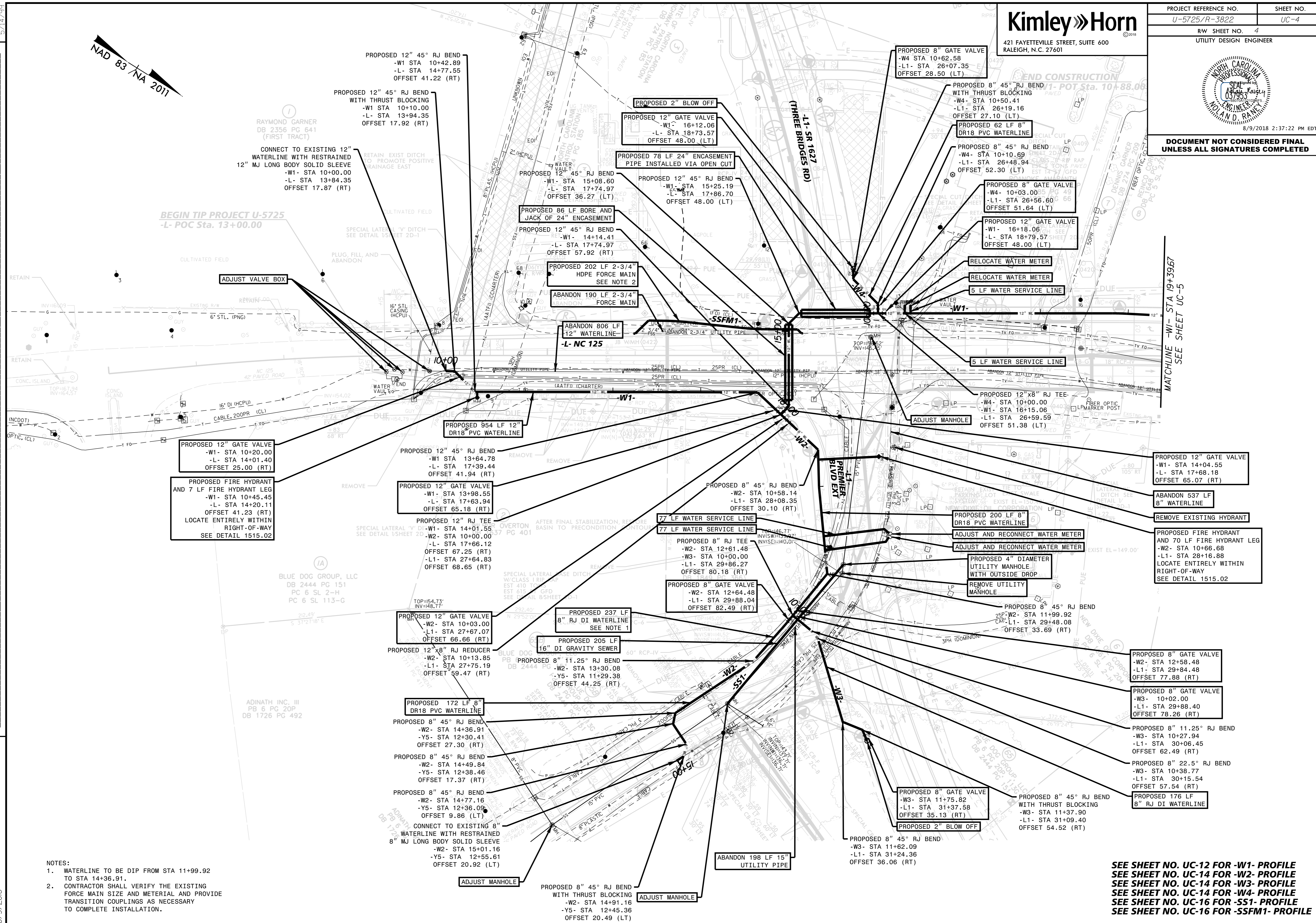
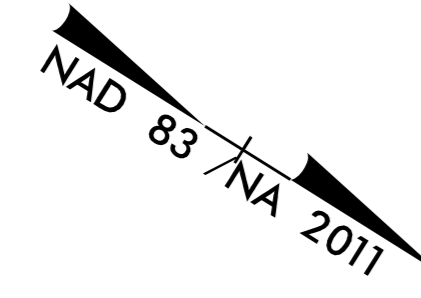


PROJECT REFERENCE NO.	SHEET NO.
U-5725/R-3822	UC-4
RW SHEET NO. 4	
UTILITY DESIGN ENGINEER	



DOCUMENT NOT CONSIDERED FINAL
UNLESS ALL SIGNATURES COMPLETED



PROPOSED 12" GATE VALVE
-W1- STA 10+20.00
-L- STA 14+01.40
OFFSET 25.00 (RT)

PROPOSED FIRE HYDRANT AND 7 LF FIRE HYDRANT LEG
-W1- STA 10+45.45
-L- STA 14+20.11
OFFSET 41.23 (RT)
LOCATE ENTIRELY WITHIN RIGHT-OF-WAY
SEE DETAIL 1515.02

PROPOSED 12" 45° RJ BEND
-W1- STA 13+64.78
-L- STA 17+39.44
OFFSET 41.94 (RT)

PROPOSED 12" GATE VALVE
-W1- STA 13+98.55
-L- STA 17+63.94
OFFSET 65.18 (RT)

PROPOSED 12" 45° RJ BEND
-W2- STA 10+13.85
-L1- STA 27+75.19
OFFSET 59.47 (RT)

PROPOSED 12" 45° RJ BEND
-W2- STA 14+36.91
-Y5- STA 12+30.41
OFFSET 27.30 (RT)

PROPOSED 12" 45° RJ BEND
-W2- STA 14+77.16
-Y5- STA 12+36.09
OFFSET 9.86 (LT)

CONNECT TO EXISTING 8" WATERLINE WITH RESTRAINED 8" MJ LONG BODY SOLID SLEEVE
-W2- STA 15+01.16
-Y5- STA 12+55.61
OFFSET 20.92 (LT)

PROPOSED 8" 45° RJ BEND
-W2- STA 10+58.14
-L1- STA 28+08.35
OFFSET 30.10 (RT)

PROPOSED 8" 45° RJ BEND
-W2- STA 12+61.48
-W3- STA 10+00.00
-L1- STA 29+86.27
OFFSET 80.18 (RT)

PROPOSED 8" 45° RJ BEND
-W2- STA 12+64.48
-L1- STA 29+88.04
OFFSET 82.49 (RT)

PROPOSED 8" 45° RJ BEND
-W2- STA 11+99.92
-L1- STA 29+48.08
OFFSET 33.69 (RT)

PROPOSED 8" 45° RJ BEND
-W3- STA 11+75.82
-L1- STA 31+37.58
OFFSET 35.13 (RT)

PROPOSED 8" 45° RJ BEND WITH THRUST BLOCKING
-W3- STA 11+37.90
-L1- STA 31+09.40
OFFSET 54.52 (RT)

PROPOSED 8" 45° RJ BEND WITH THRUST BLOCKING
-W4- STA 10+50.41
-L1- STA 26+19.16
OFFSET 27.10 (LT)

PROPOSED 8" 45° RJ BEND
-W4- STA 10+10.69
-L1- STA 26+48.94
OFFSET 52.30 (LT)

PROPOSED 8" 45° RJ BEND
-W4- STA 10+03.00
-L1- STA 26+56.60
OFFSET 51.64 (LT)

PROPOSED 12" GATE VALVE
-W1- STA 16+18.06
-L- STA 18+79.57
OFFSET 48.00 (LT)

PROPOSED 8" 45° RJ BEND
-W4- STA 10+03.00
-L1- STA 26+59.59
OFFSET 51.38 (LT)

PROPOSED 12" GATE VALVE
-W1- STA 14+04.55
-L- STA 17+68.18
OFFSET 65.07 (RT)

PROPOSED 8" 45° RJ BEND
-W2- STA 12+58.48
-L1- STA 29+84.48
OFFSET 77.88 (RT)

PROPOSED 8" 45° RJ BEND
-W3- STA 10+02.00
-L1- STA 29+88.40
OFFSET 78.26 (RT)

PROPOSED 8" 11.25° RJ BEND
-W3- STA 10+27.94
-L1- STA 30+06.45
OFFSET 62.49 (RT)

PROPOSED 8" 22.5° RJ BEND
-W3- STA 10+38.77
-L1- STA 30+15.54
OFFSET 57.54 (RT)

PROPOSED 176 LF 8" RJ DI WATERLINE

PROPOSED 8" 45° RJ BEND WITH THRUST BLOCKING
-W3- STA 11+62.09
-L1- STA 31+24.36
OFFSET 36.06 (RT)

PROPOSED 12" 45° RJ BEND
-W1- STA 15+08.60
-L- STA 17+74.97
OFFSET 36.27 (LT)

PROPOSED 12" 45° RJ BEND
-W1- STA 15+25.19
-L- STA 17+86.70
OFFSET 48.00 (LT)

PROPOSED 12" 45° RJ BEND
-W1- STA 14+14.41
-L- STA 17+74.97
OFFSET 57.92 (RT)

PROPOSED 12" 45° RJ BEND
-W1- STA 14+01.55
-L- STA 17+66.12
OFFSET 67.25 (RT)

PROPOSED 12" 45° RJ BEND
-W1- STA 13+64.78
-L- STA 17+39.44
OFFSET 41.94 (RT)

PROPOSED 12" 45° RJ BEND
-W1- STA 13+98.55
-L- STA 17+63.94
OFFSET 65.18 (RT)

PROPOSED 12" 45° RJ BEND
-W1- STA 10+42.89
-L- STA 14+77.55
OFFSET 41.22 (RT)

PROPOSED 12" 45° RJ BEND WITH THRUST BLOCKING
-W1- STA 10+10.00
-L- STA 13+94.35
OFFSET 17.92 (RT)

PROPOSED 12" 45° RJ BEND
-W1- STA 10+00.00
-L- STA 10+00.00
OFFSET 0.00 (RT)

PROPOSED 12" 45° RJ BEND
-W1- STA 10+00.00
-L- STA 10+00.00
OFFSET 0.00 (RT)

PROPOSED 12" 45° RJ BEND
-W1- STA 10+00.00
-L- STA 10+00.00
OFFSET 0.00 (RT)

PROPOSED 12" 45° RJ BEND
-W1- STA 10+00.00
-L- STA 10+00.00
OFFSET 0.00 (RT)

REVISIONS

8/9/2018

- NOTES:
1. WATERLINE TO BE DIP FROM STA 11+99.92 TO STA 14+36.91.
 2. CONTRACTOR SHALL VERIFY THE EXISTING FORCE MAIN SIZE AND MATERIAL AND PROVIDE TRANSITION COUPLINGS AS NECESSARY TO COMPLETE INSTALLATION.

SEE SHEET NO. UC-12 FOR -W1- PROFILE
SEE SHEET NO. UC-14 FOR -W2- PROFILE
SEE SHEET NO. UC-14 FOR -W3- PROFILE
SEE SHEET NO. UC-14 FOR -W4- PROFILE
SEE SHEET NO. UC-16 FOR -SS1- PROFILE
SEE SHEET NO. UC-16 FOR -SSFM1- PROFILE