
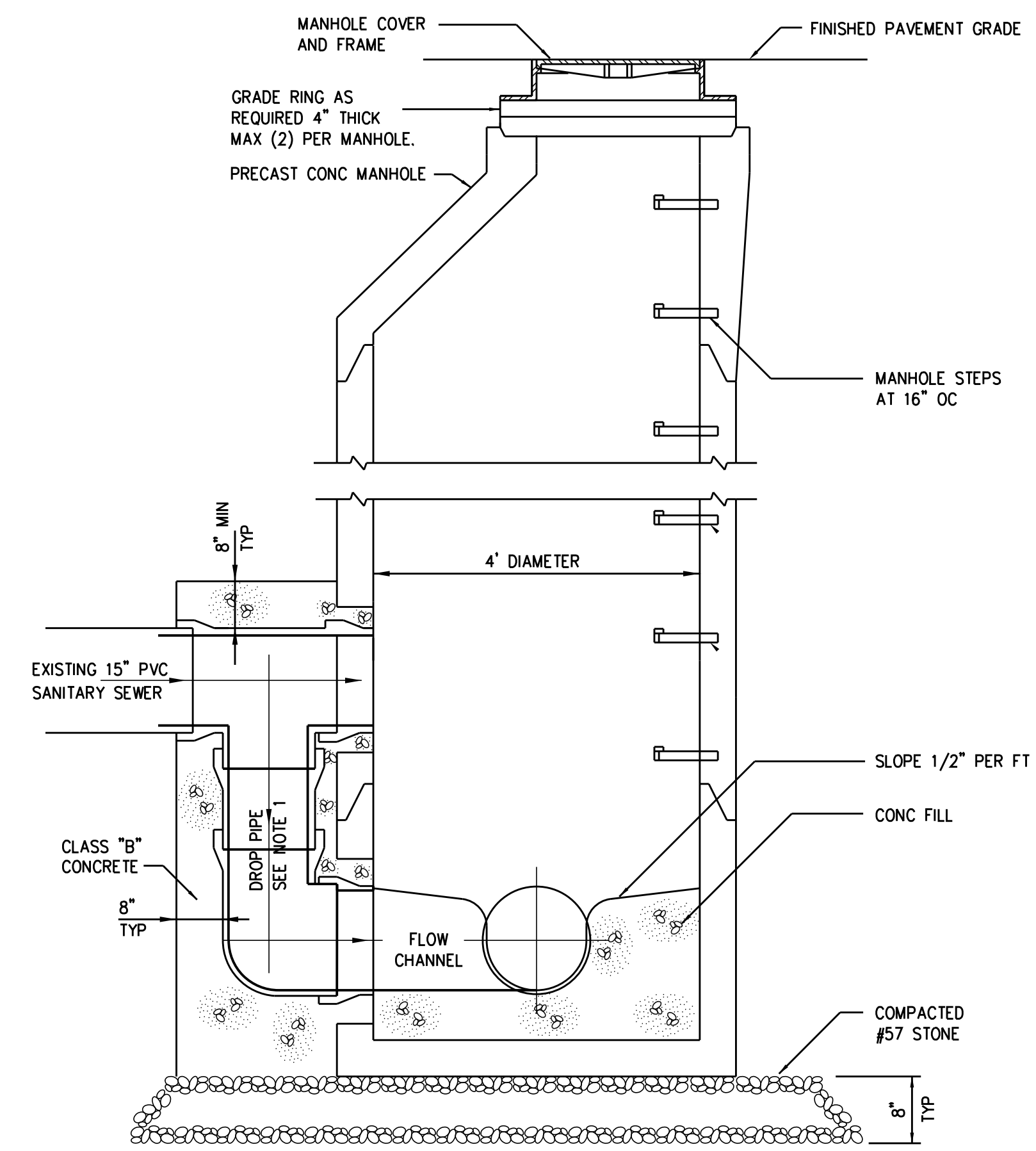


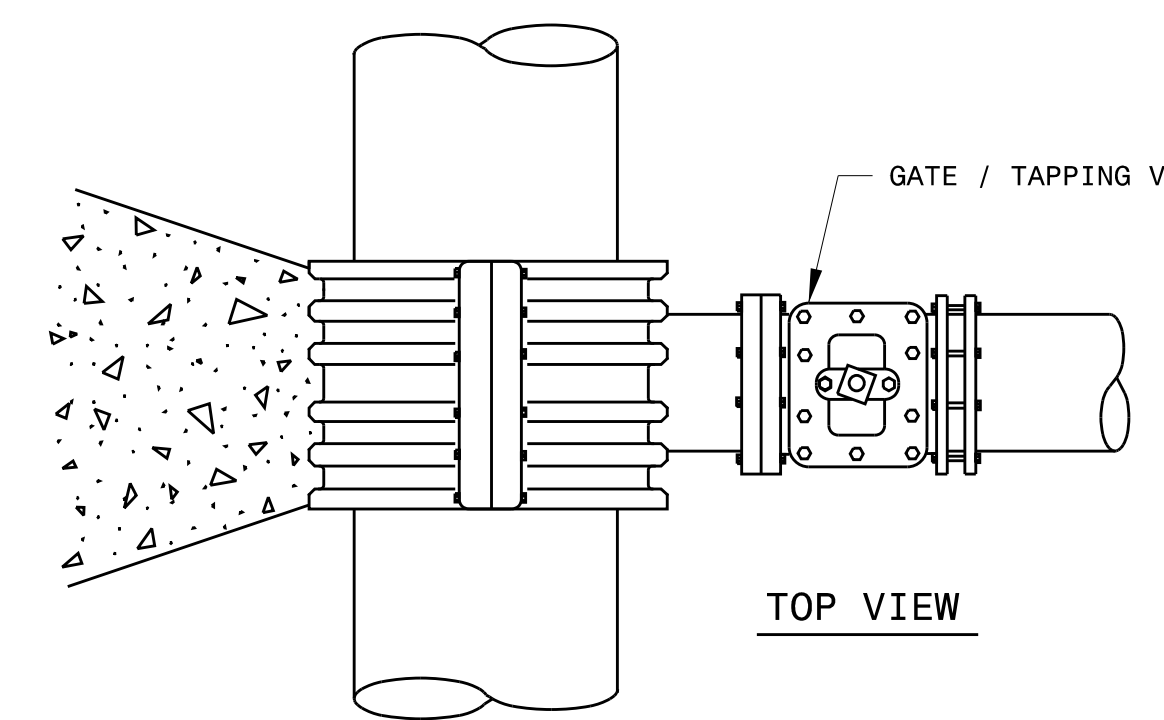
5/14/99

PROJECT REFERENCE NO. U-5725/R-3822	SHEET NO. UC-3C
R/W SHEET NO. N/A	
UTILITY DESIGN ENGINEER	
	
DOCUMENT NOT CONSIDERED FINAL UNLESS ALL SIGNATURES COMPLETED	

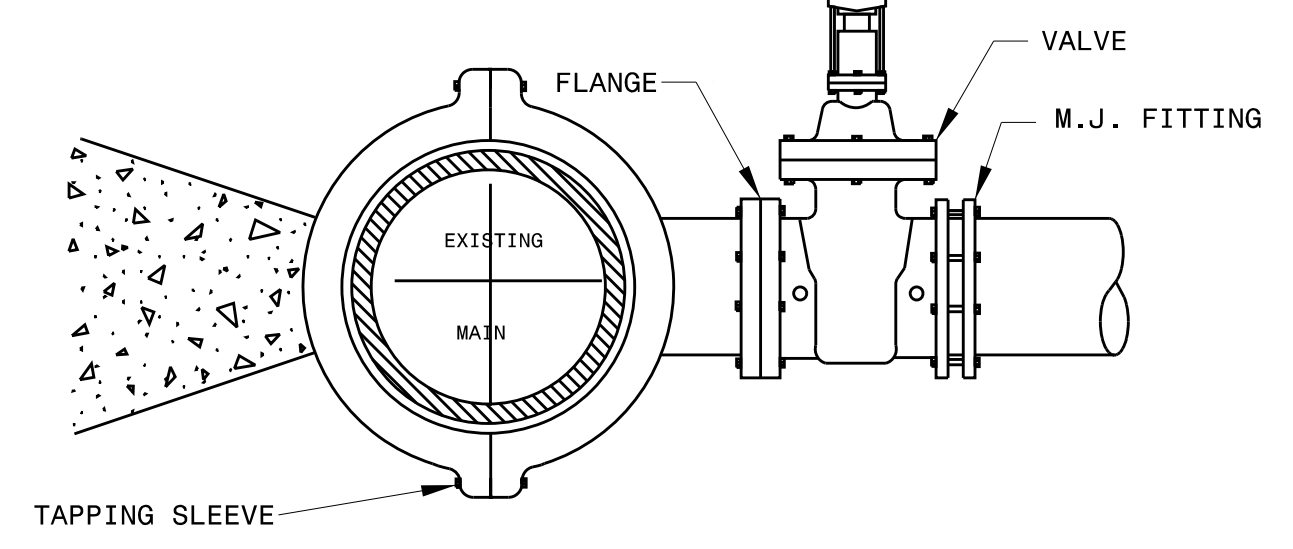


NOTES:
 1. ALL OUTSIDE DROP PIPING AND FITTINGS SHALL BE RESTRAINED, PROTECTO 401 LINED DUCTILE IRON.

**DROP MANHOLE
 0260109**

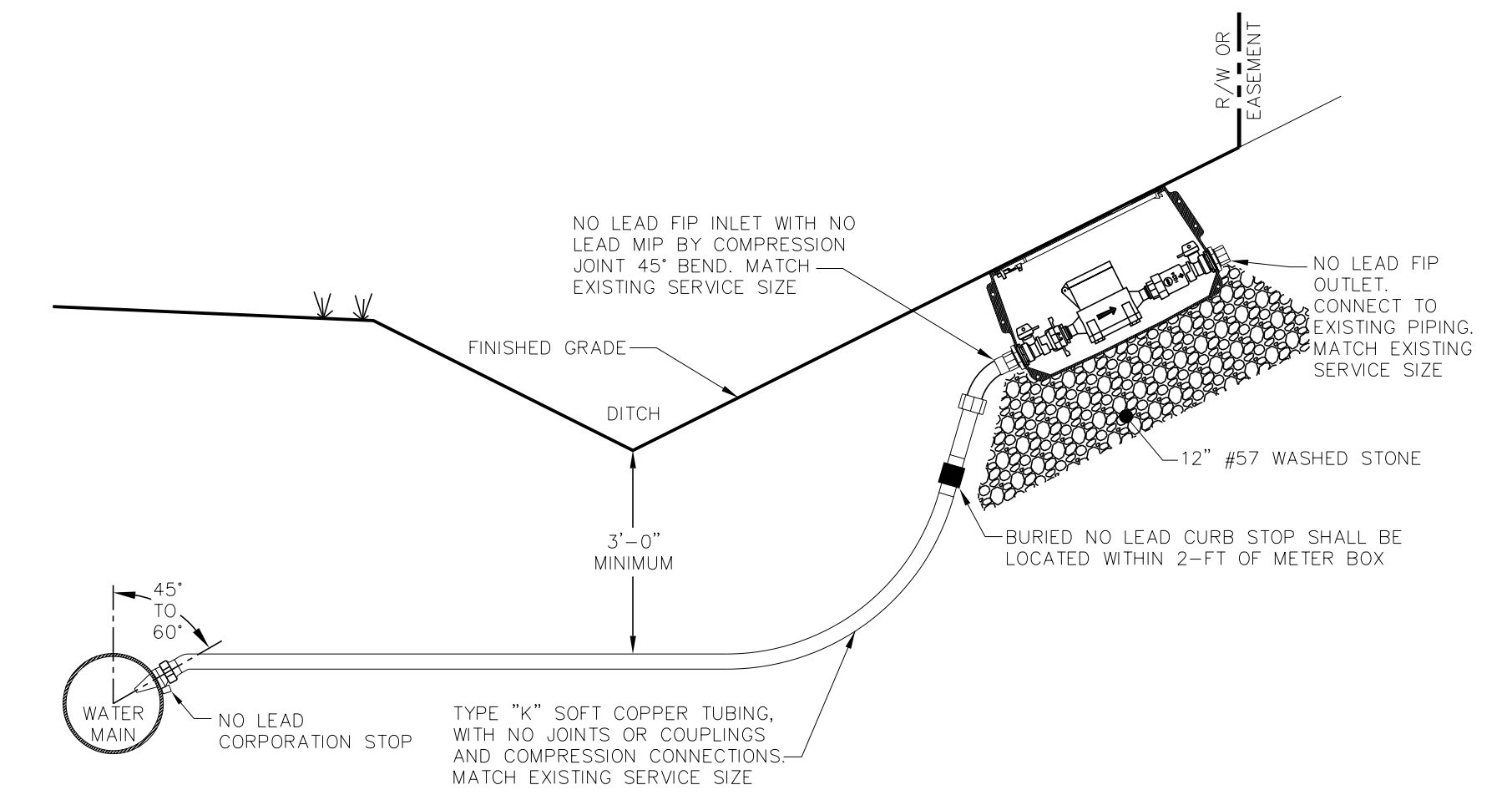


3000 PSI SOLID CONCRETE SHALL BE USED AS FOOTING FOR DUCTILE IRON PIPE.

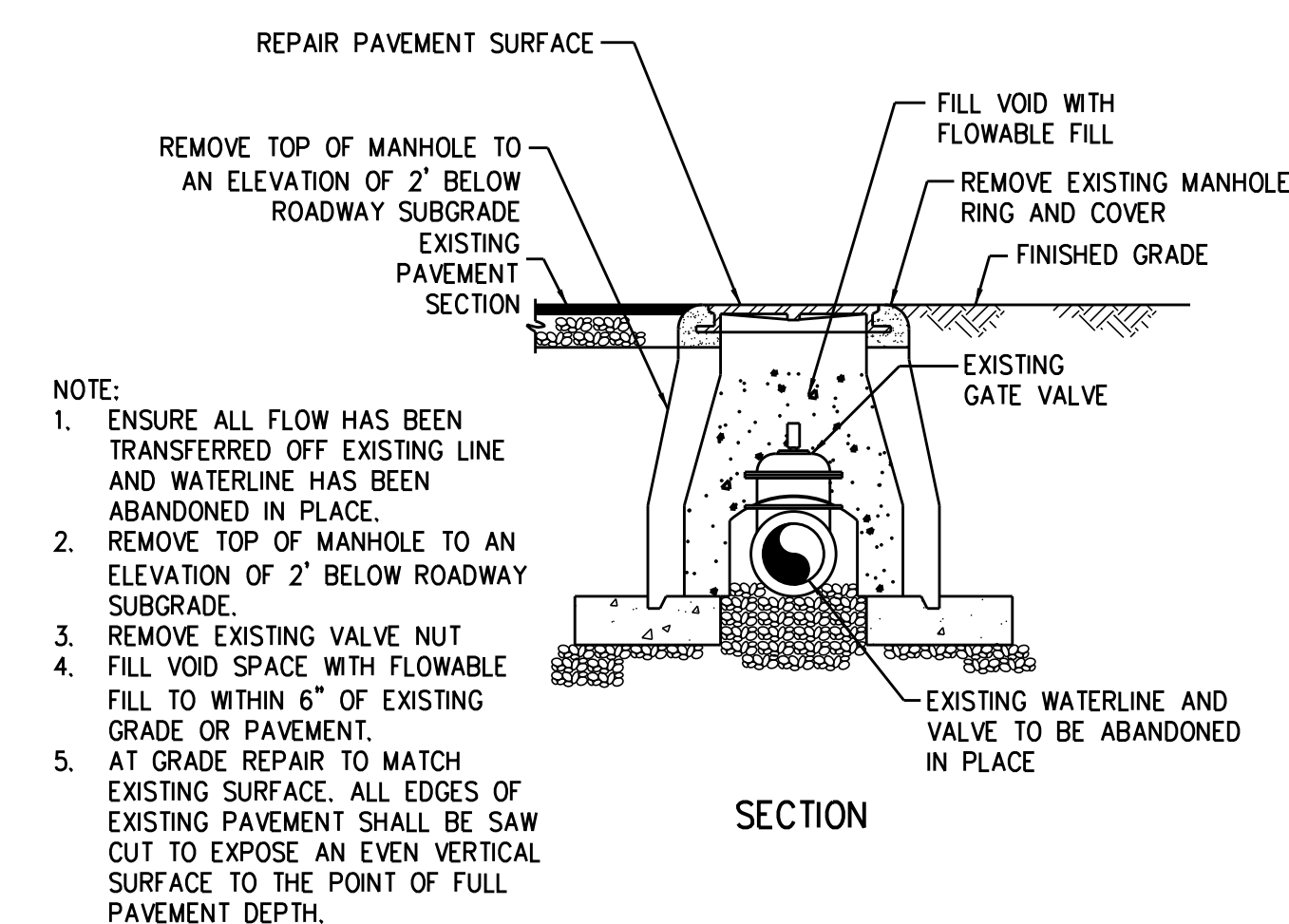


NOTES:
 1. CONCRETE SHALL NOT CONTACT BOLTS OR ENDS OF MECHANICAL JOINT FITTINGS.
 2. SEE STANDARD REACTION BLOCK TABLE, DETAIL 0222114R, FOR AREA OF CONCRETE REQUIRED.

**TAPPING SLEEVE AND VALVE
 DETAIL D1**

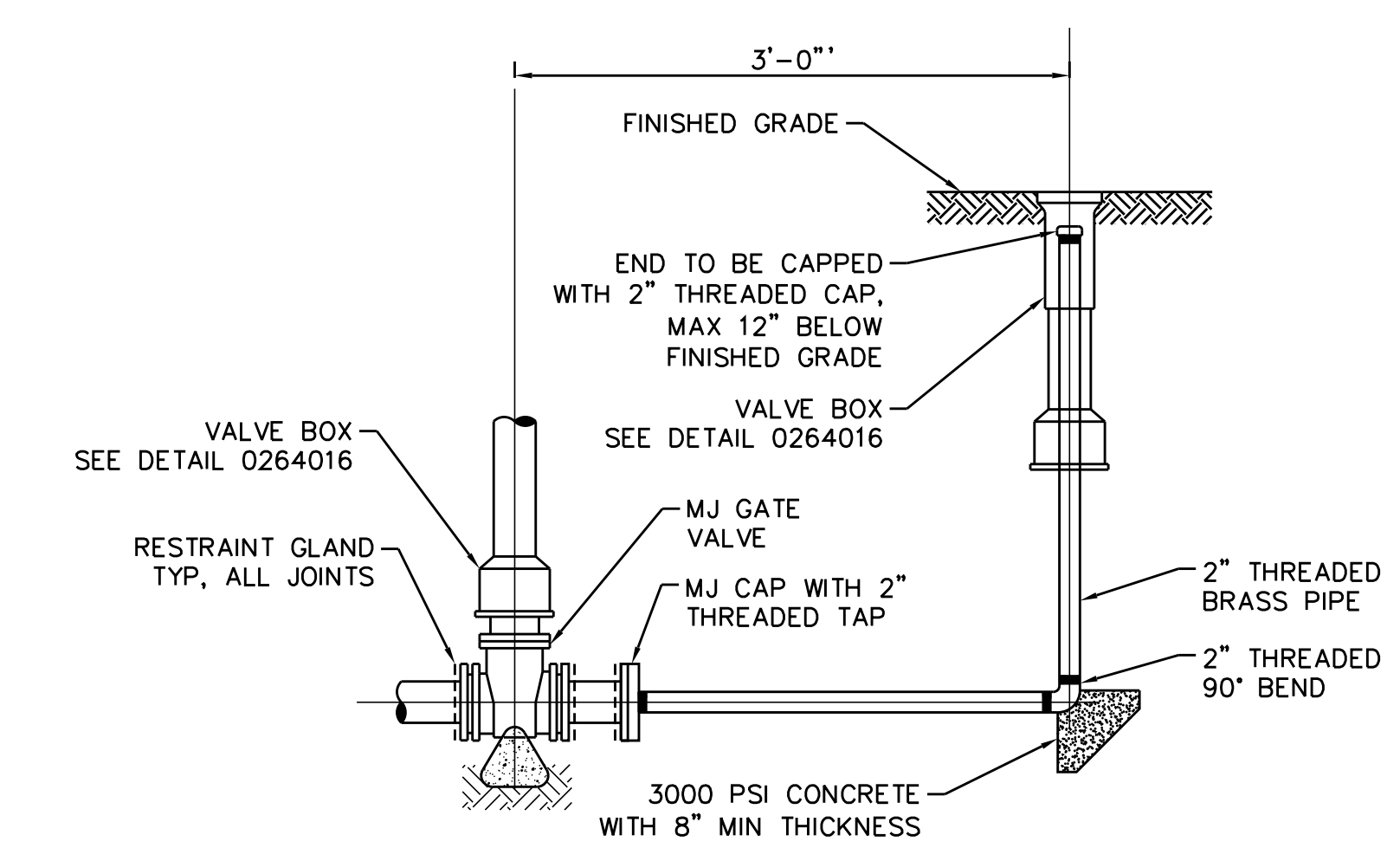


**WATER SERVICE CONNECTION
 DETAIL D2**



NOTE:
 1. ENSURE ALL FLOW HAS BEEN TRANSFERRED OFF EXISTING LINE AND WATERLINE HAS BEEN ABANDONED IN PLACE.
 2. REMOVE TOP OF MANHOLE TO AN ELEVATION OF 2' BELOW ROADWAY SUBGRADE.
 3. REMOVE EXISTING VALVE NUT
 4. FILL VOID SPACE WITH FLOWABLE FILL TO WITHIN 6" OF EXISTING GRADE OR PAVEMENT.
 5. AT GRADE REPAIR TO MATCH EXISTING SURFACE. ALL EDGES OF EXISTING PAVEMENT SHALL BE SAW CUT TO EXPOSE AN EVEN VERTICAL SURFACE TO THE POINT OF FULL PAVEMENT DEPTH.

**WATER MANHOLE ABANDONMENT
 DETAIL D3**



2\"/>

REVISIONS

8/9/2018