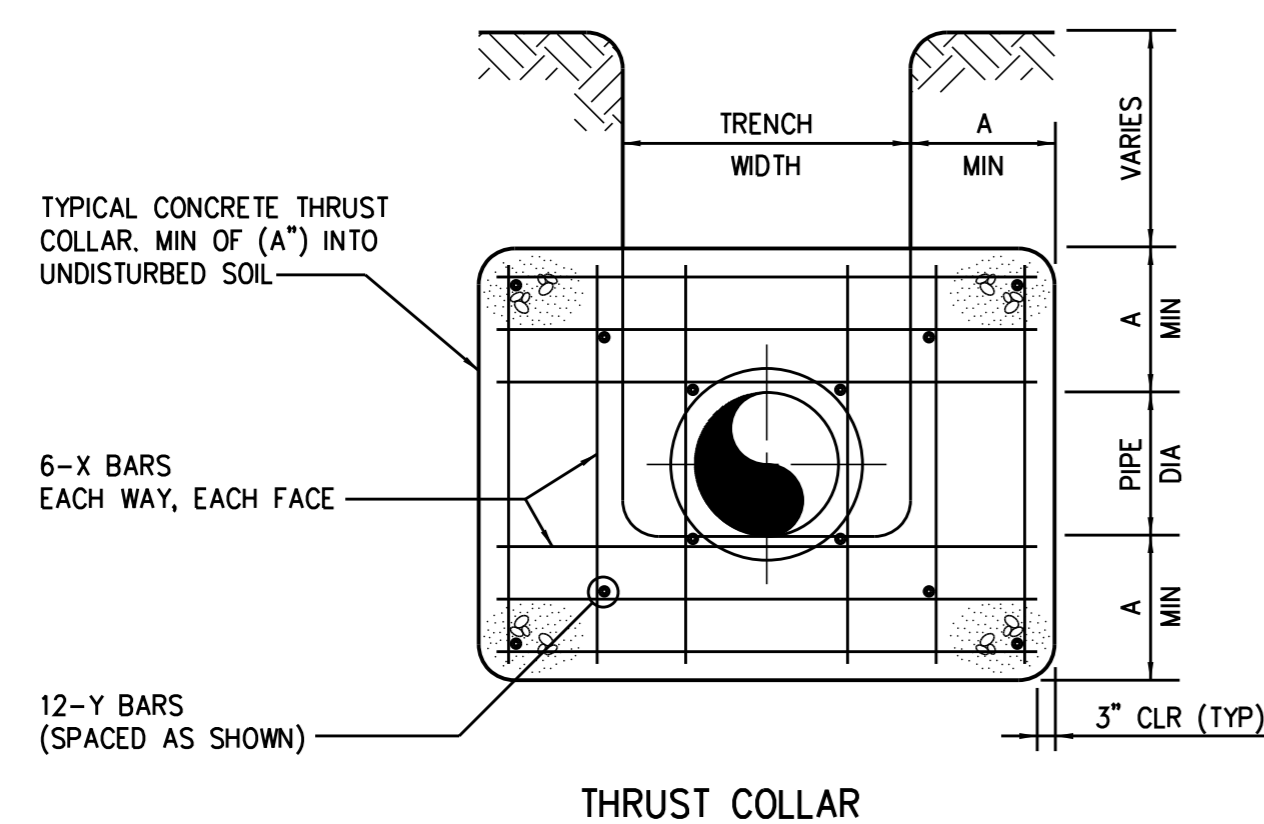
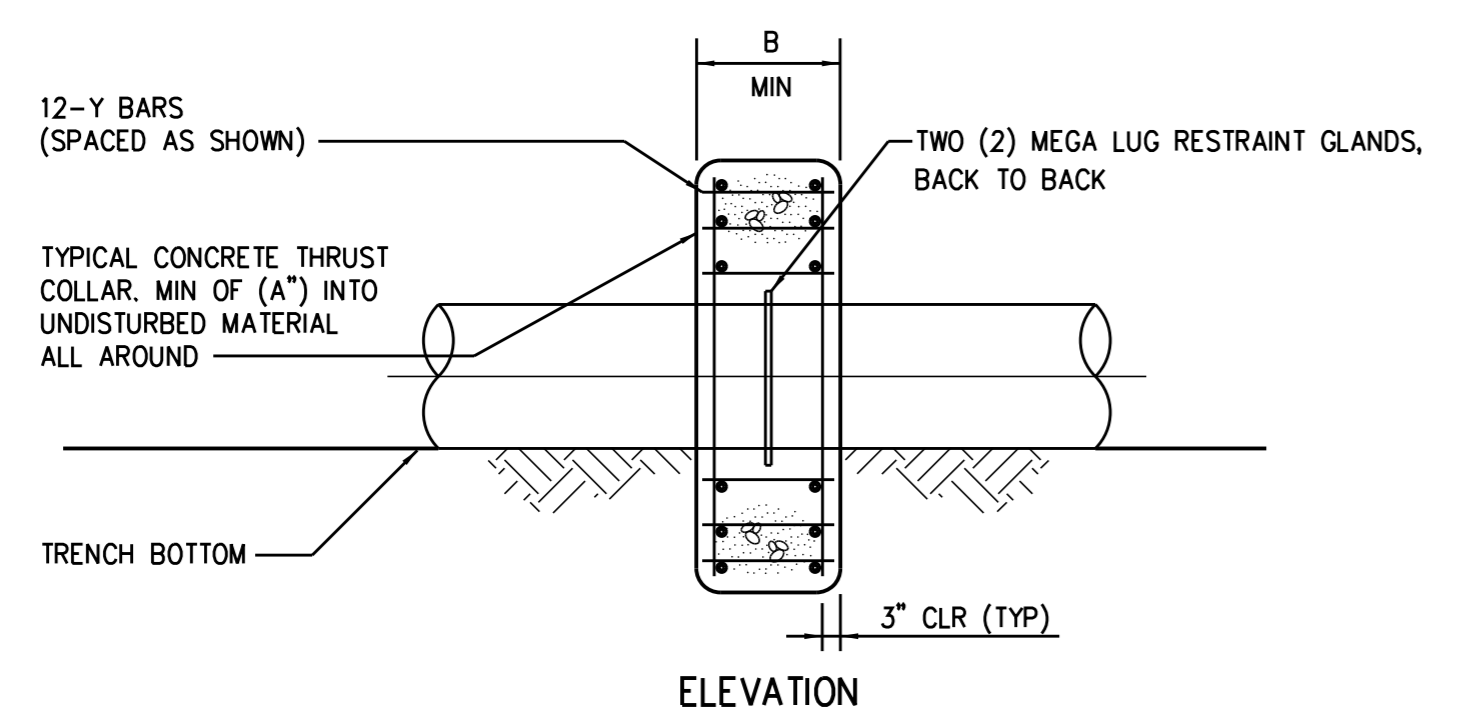
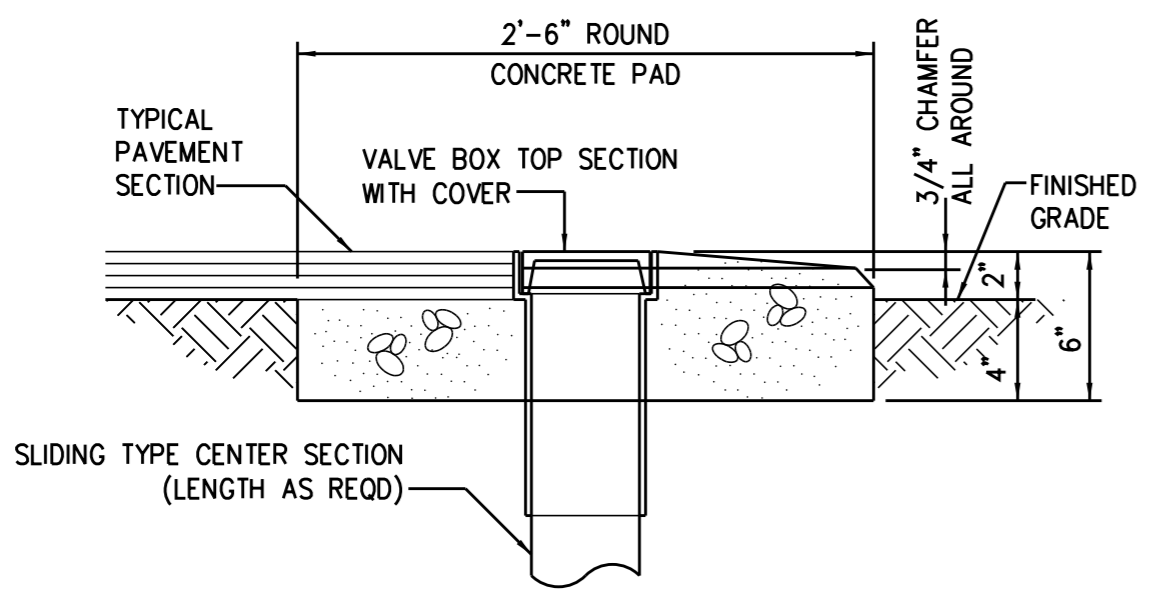


5/14/99

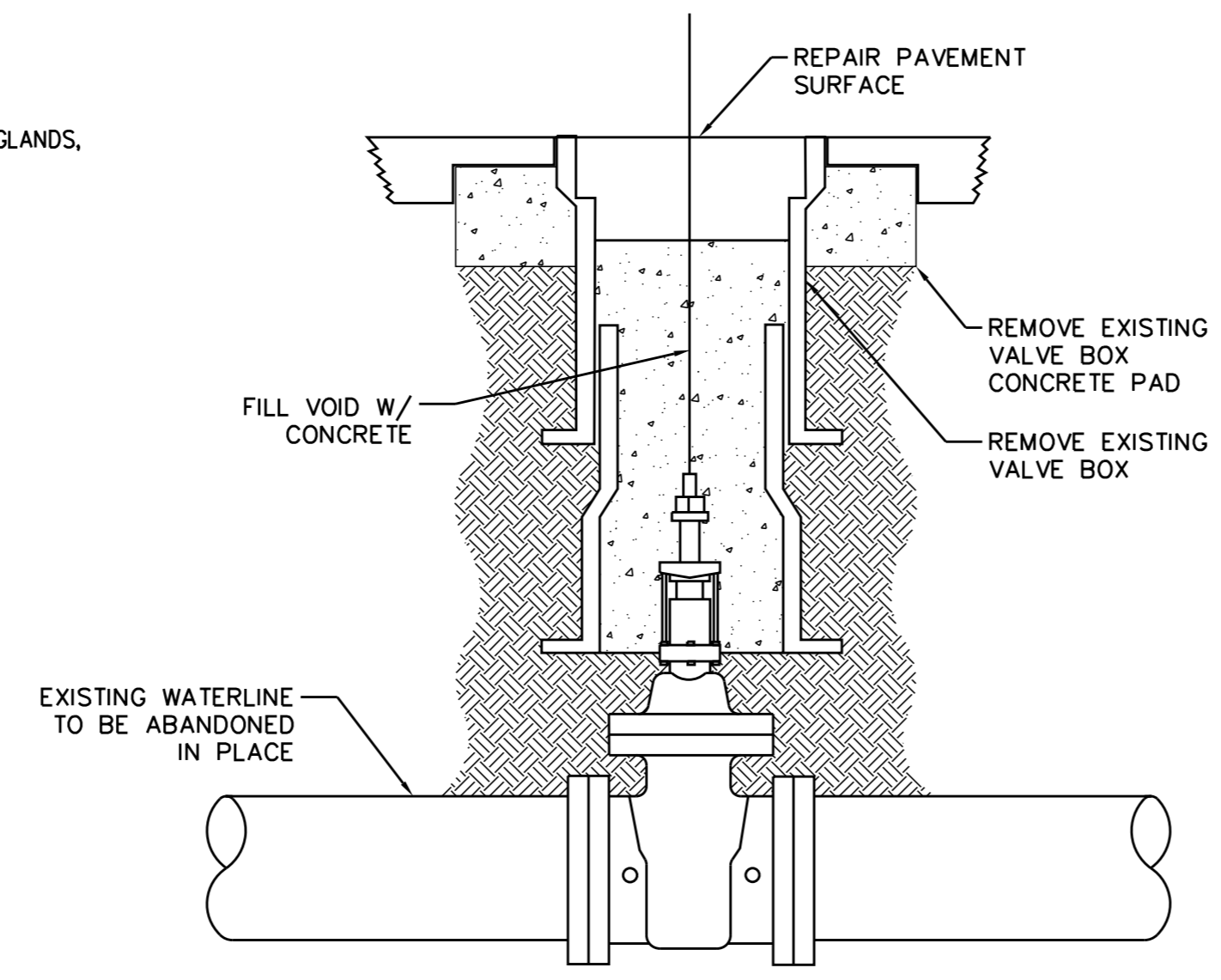
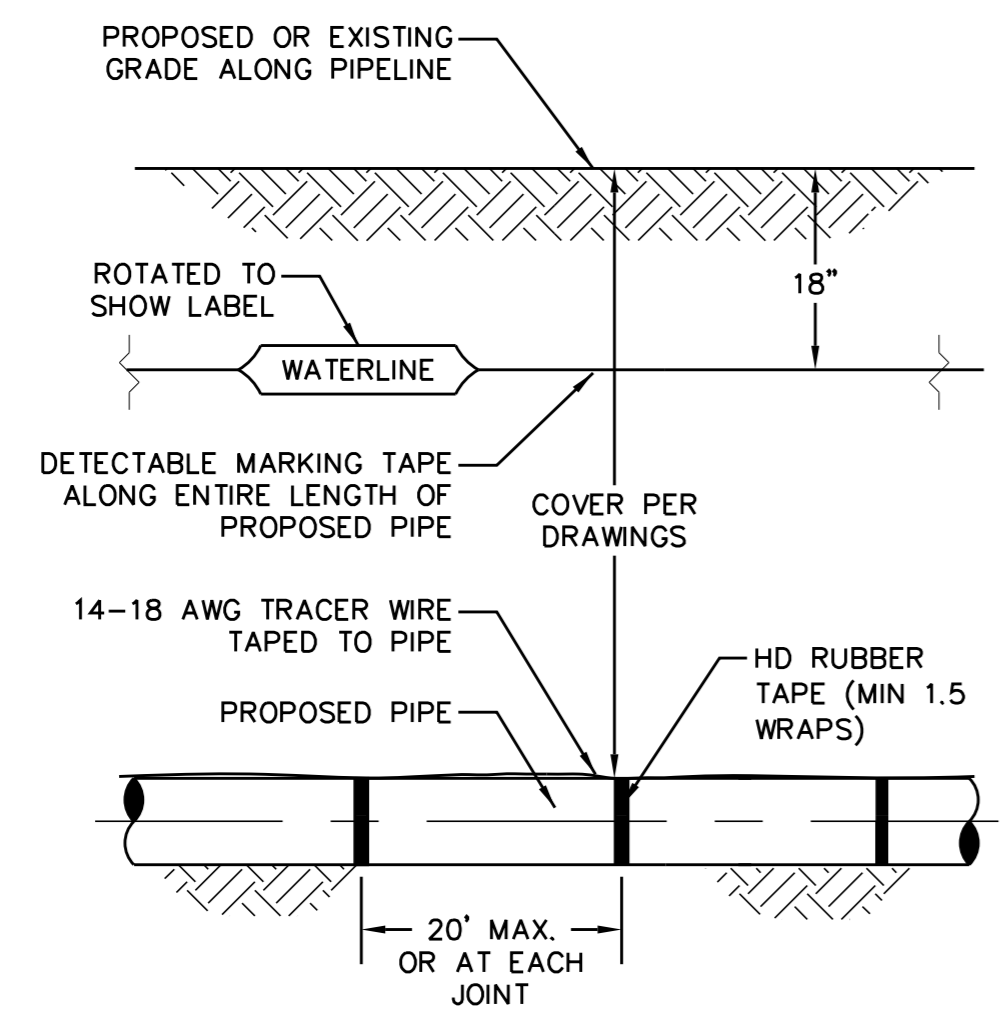


PIPE SIZE	X BARS	Y BARS	A	B
6"-36"	#5	#5	1'-4"	1'-7"
42" & >	#6	#6	1'-8"	1'-9"

0222119

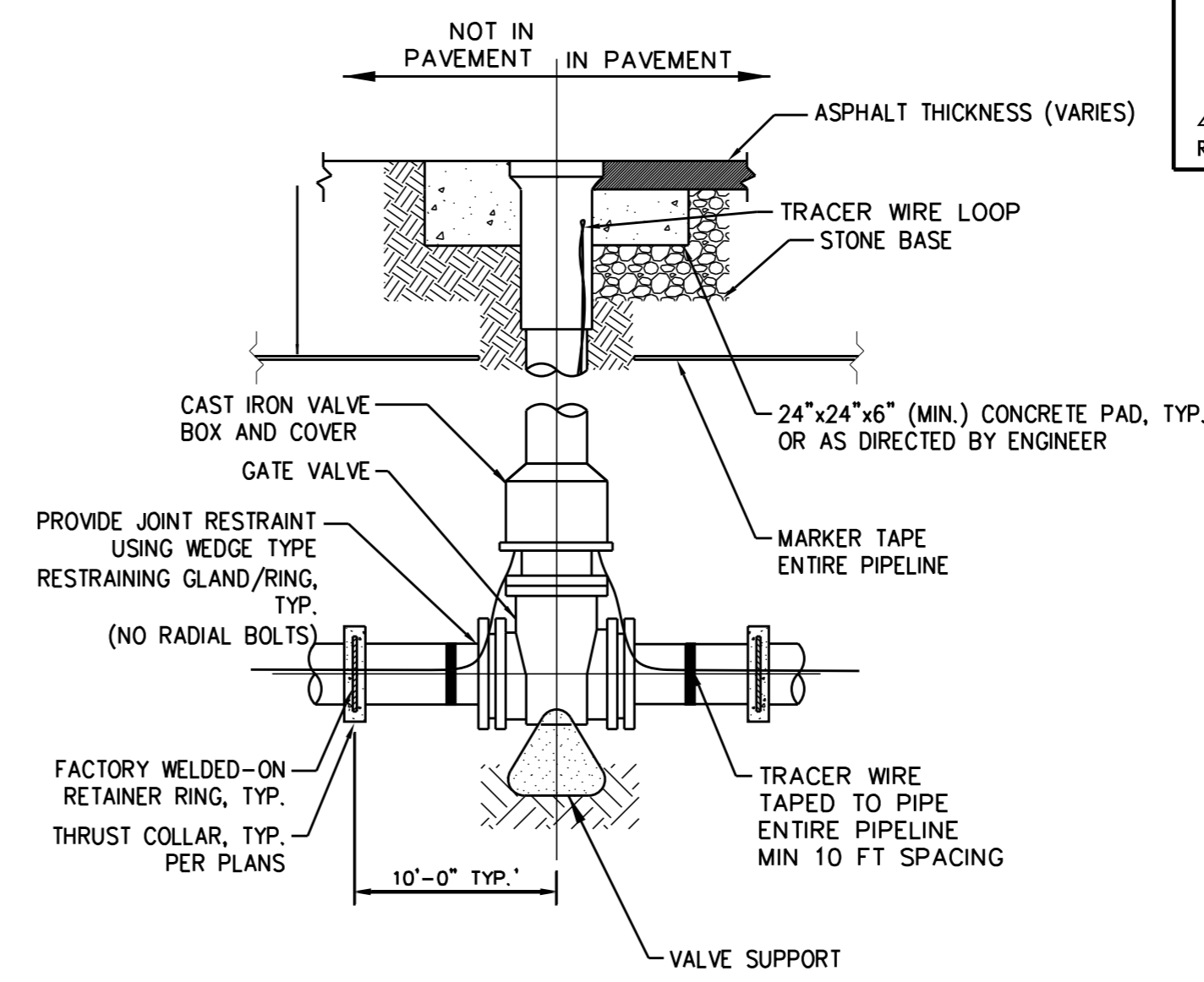


0264005



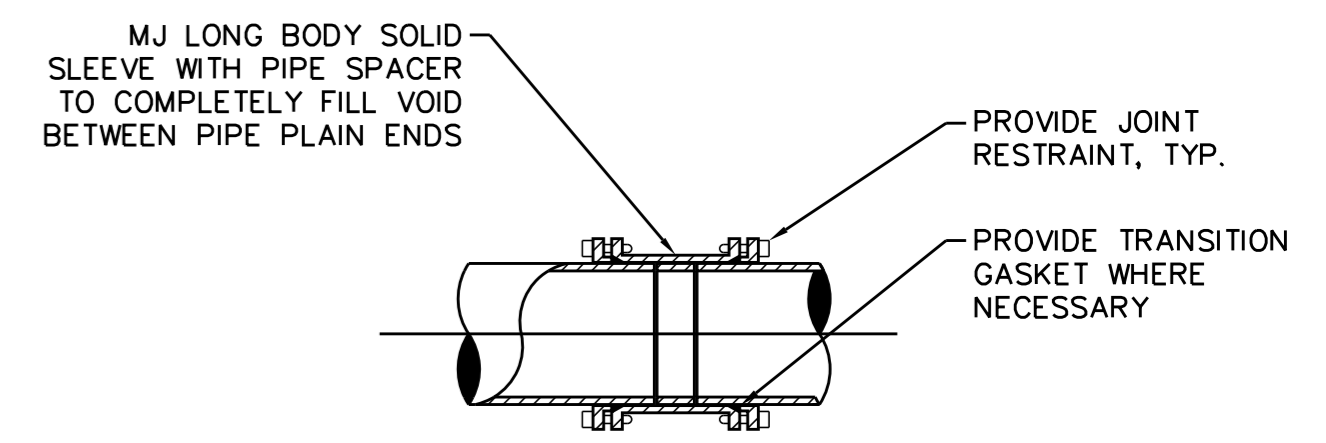
0264014

- NOTES:**
1. CLOSE VALVE.
 2. REMOVE UPPER VALVE BOX AND VALVE BOX COVER.
 3. REMOVE EXISTING VALVE NUT.
 4. FILL VOID AROUND VALVE WITH CONCRETE TO WITHIN 6" OF EXISTING GRADE OR PAVEMENT.
 5. AT GRADE REPAIR TO MATCH EXISTING SURFACE.



0264016

- NOTES:**
1. PROVIDE HDPE INSERTS IN ALL VALVE BOXES.



1509221

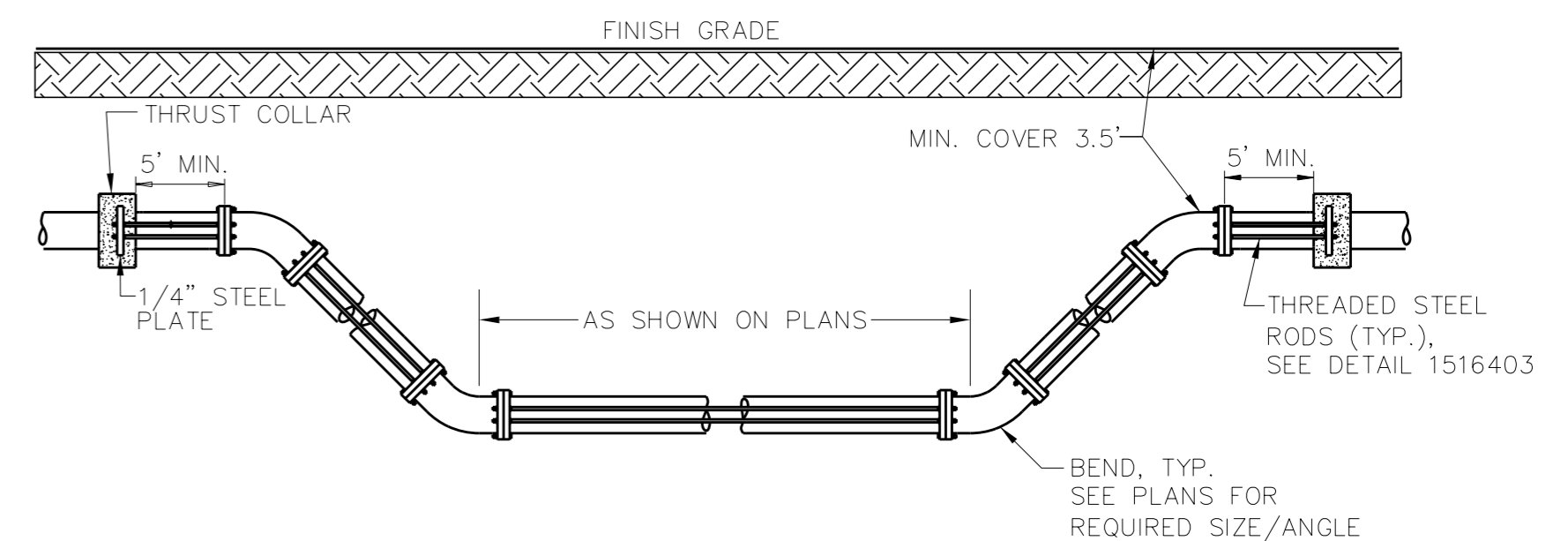
PIPE SIZE	50 PSI		100 PSI		150 PSI		200 PSI		250 PSI		300 PSI		350 PSI	
	BOLTS NO-DIA	TAB THK	BOLTS NO-DIA	TAB THK	BOLTS NO-DIA	TAB THK	BOLTS NO-DIA	TAB THK	BOLTS NO-DIA	TAB THK	BOLTS NO-DIA	TAB THK	BOLTS NO-DIA	TAB THK
4.6	2-3/4	1	2-3/4	1	2-3/4	1	2-3/4	1	2-3/4	1	2-3/4	1	2-3/4	1
8	2-3/4	1 1/4	2-3/4	1 1/4	2-3/4	1 1/4	2-3/4	1 1/4	2-3/4	1 1/4	4-3/4	1 1/4	4-3/4	1 1/4
10	2-3/4	1 1/4	2-3/4	1 1/4	2-3/4	1 1/4	4-3/4	1 1/4	4-3/4	1 1/4	4-3/4	1 1/4	4-3/4	1 1/4
12	2-3/4	1 1/4	2-3/4	1 1/4	4-3/4	1 1/4	4-3/4	1 1/4	6-3/4	1 1/4	6-3/4	1 1/4	6-3/4	1 1/4
14	2-3/4	1 1/2	4-3/4	1 1/2	4-3/4	1 1/2	4-3/4	1 1/2	4-3/4	1 1/2	4-3/4	1 1/2	4-3/4	1 1/2
16	2-3/4	1 1/2	4-3/4	1 1/2	6-3/4	1 1/2	4-3/4	1 1/2	4-3/4	1 1/2	4-3/4	1 1/2	6-3/4	1 1/2
18	2-3/4	1 3/4	4-3/4	1 3/4	6-3/4	1 3/4	4-3/4	1 3/4	6-3/4	1 3/4	6-3/4	1 3/4	6-3/4	1 3/4
20	4-3/4	1 3/4	4-3/4	1 3/4	4-3/4	1 3/4	4-3/4	1 3/4	6-3/4	1 3/4	6-3/4	1 3/4	8-3/4	1 3/4
24	4-3/4	2	4-3/4	2	6-3/4	2	6-3/4	2	8-3/4	2	10-3/4	2	10-3/4	2
30	4-1	2 1/4	4-1	2 1/4	4-1	2 1/4	6-1	2 1/4	8-1	2 1/4	10-1	2 1/4	10-1	2 1/4
36	4-1	2 1/2	4-1	2 1/2	6-1	2 1/2	8-1	2 1/2	10-1	2 1/2	12-1	2 1/2	14-1	2 1/2
42	4-1 1/4	2 3/4	4-1 1/4	2 3/4	6-1 1/4	2 3/4	8-1 1/4	2 3/4	10-1 1/4	2 3/4	12-1 1/4	2 3/4	12-1 1/4	2 3/4
48	6-1 1/4	2 3/4	4-1 1/4	2 3/4	8-1 1/4	2 3/4	8-1 1/4	2 3/4	12-1 1/4	2 3/4	12-1 1/4	2 3/4	14-1 1/4	2 3/4
54	6-1 1/4	3	6-1 1/4	3	8-1 1/4	3	12-1 1/4	3	14-1 1/4	3	16-1 1/4	3	18-1 1/4	3

THREADED ROD SCHEDULE
 DESIGN PRESSURE (DIMENSIONS IN INCHES)

NOTES:

1. THREADED RODS FOR ALL PIPE DIAMETERS IN THE SHADED AREA SHALL BE ASTM A193 (GRADE B7).
2. ALL OTHER THREADED RODS SHALL BE ASTM A36. ALL TABS SHALL BE ASTM A572 GR50.
3. ASTM A193 (GRADE B7) RODS SHALL BE LABELED AND BUNDLED SEPARATELY.
4. THIS SCHEDULE SHALL APPLY FOR HARNESSSED FLANGED ADAPTERS, HARNESSSED FLEXIBLE COUPLINGS AND ALL MECHANICAL JOINT COUPLINGS, SLEEVES ETC. THAT ARE REQUIRED TO BE HARNESSSED.
5. RODS THREADED AT ENDS (INCLUDING NUTS) SHALL BE EQUALLY SPACED AROUND PIPE BETWEEN ALL MECHANICAL JOINT FITTINGS (TEE, VALVES, BEND, PLUG, ETC.) OR AS OTHERWISE SHOWN ON THE CONTRACT DRAWINGS. THREADED RODS SHALL BE AS SHOWN IN THE THREADED ROD SCHEDULE. SEE NOTE 6.
6. RODS, NUTS, ETC., IN CONTACT WITH SOIL SHALL BE PAINTED WITH TWO COATS COAL TAR (MIN 26 DRY MIL THICKNESS) TNEMEC 46-465 HI-BUILD OR EQUAL.

1516403



0222128

- NOTES:**
1. ONCE INSTALLED AND TIGHT, THE STEEL RODS AND BOLTS SHALL BE COATED WITH 2 COATS OF BITUMINOUS BASE PAINT.
 2. CONCRETE SHALL NOT CONTACT BOLTS OR ENDS OF MECHANICAL JOINT BENDS.
 3. MEGALUGS OR RESTRAINED JOINT PIPE AND FITTINGS ARE ALLOWED IN LIEU OF RODDING.
 4. CONCRETE ENCASED MEGALUGS MAY BE USED IN LIEU OF THRUST COLLARS.
 5. ALL PIPE AND FITTINGS BETWEEN THRUST COLLARS SHALL BE RODDED.

REVISIONS

8/9/2018